

OE ENERGY MARKET SNAPSHOT

Central Version – Data Through October 2016

Office of Enforcement
Federal Energy Regulatory Commission
November 2016



Natural Gas and Fuels Markets

Central

Midwest Day-Ahead Natural Gas Prices Averaged Annually/Seasonally

	Average Day Ahead Prices (\$/MMBtu)	Chicago City Gate	MichCon	AECO C Hub Natural Gas/USD	Dawn Ontario USD	NNG/NBP Ventura	Henry Hub
2013	Annual	3.85	3.91	3.09	4.08	3.80	3.72
	Summer	3.84	3.96	2.94	4.15	3.77	3.76
	Winter 2013/2014	7.42	7.81	4.36	8.68	8.19	4.61
2014	Annual	5.52	5.75	4.03	6.13	5.79	4.32
	Summer	4.24	4.33	3.90	4.36	4.18	4.18
	Winter 2014/2015	3.54	3.55	2.58	3.80	3.52	3.21
2015	Annual	2.73	2.81	2.11	2.93	2.68	2.60
	Summer	2.69	2.84	2.16	2.88	2.62	2.67
	Winter 2015/2016	2.04	2.05	1.52	2.09	2.00	1.97
2016 YTD	Annual	2.36	2.37	1.50	2.41	2.29	2.38
	Summer	2.50	2.51	1.57	2.55	2.42	2.55
	Winter 2016/2017	2.24	2.22	2.03	2.23	2.16	2.53

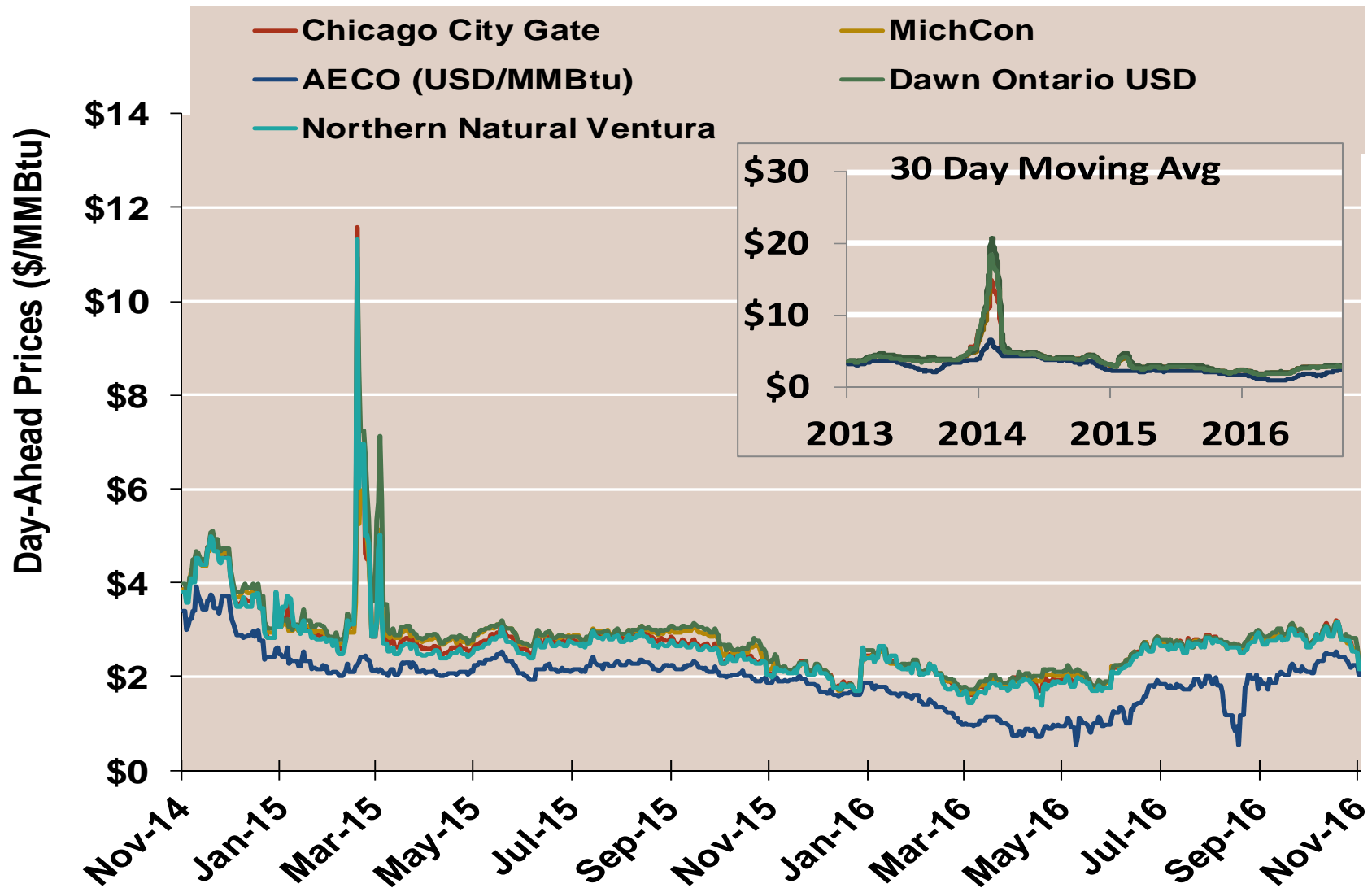
Notes:

Source: Derived from ICE data

Updated Nov-2016

2026

Midwest Day-Ahead Prices



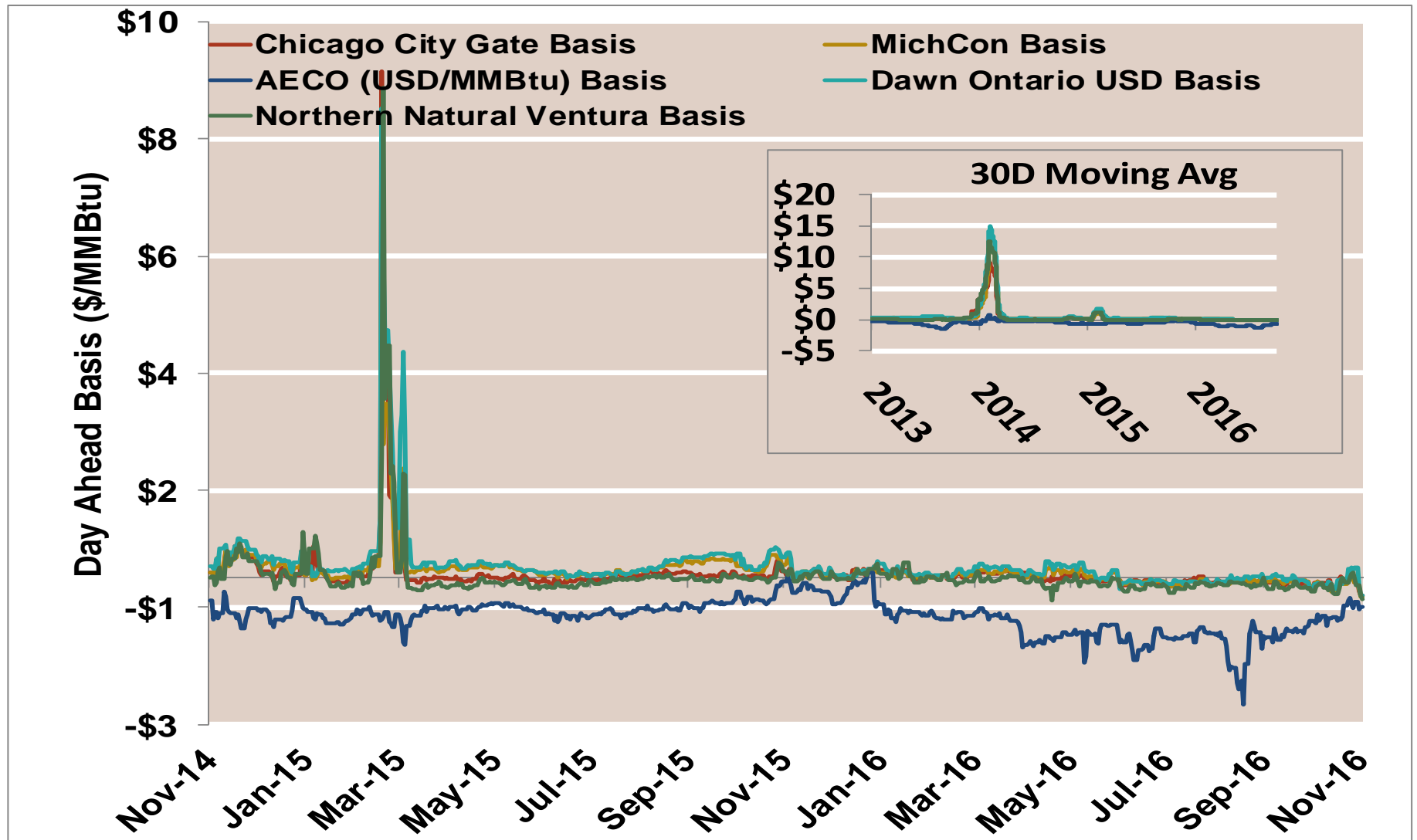
Notes:

Source: Derived from ICE data

Updated

Nov-2016

Midwest Day-Ahead Basis

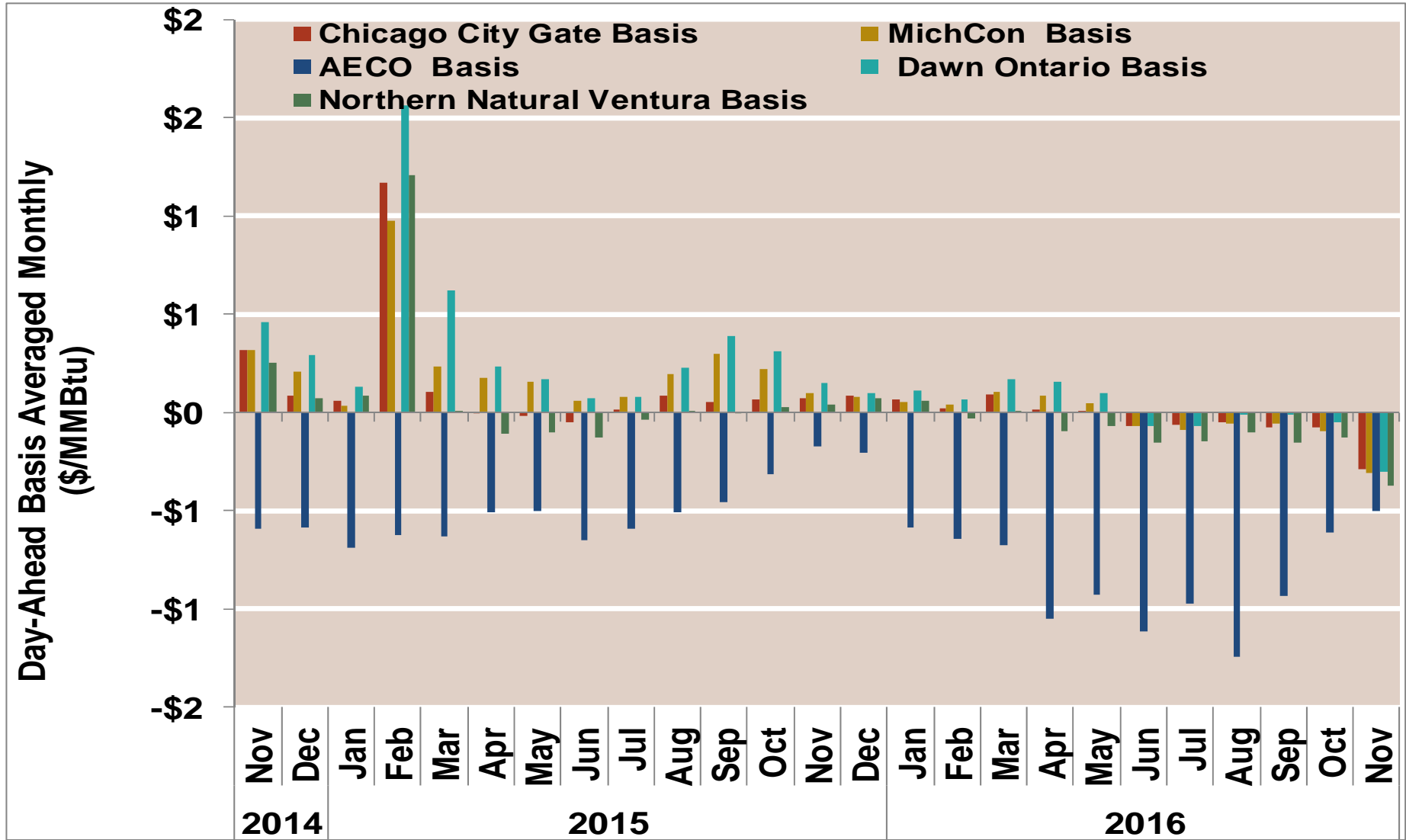


Notes:

Source: Derived from ICE data

Updated Apr-2016

Midwest Monthly Average Basis Value To Henry Hub

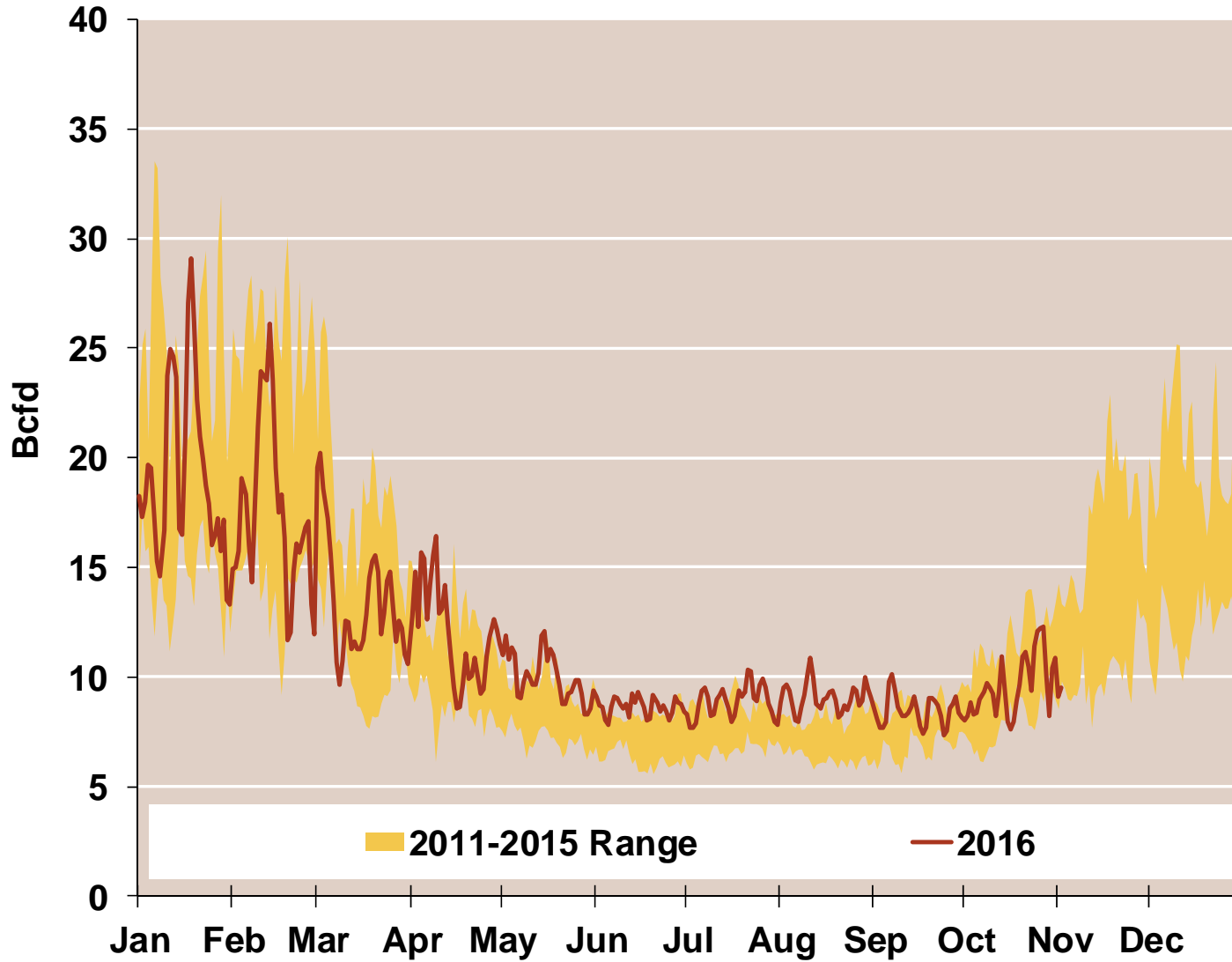


Notes:

Source: Derived from ICE data

Updated Apr-2016

Daily Midwest Natural Gas Demand All Sectors

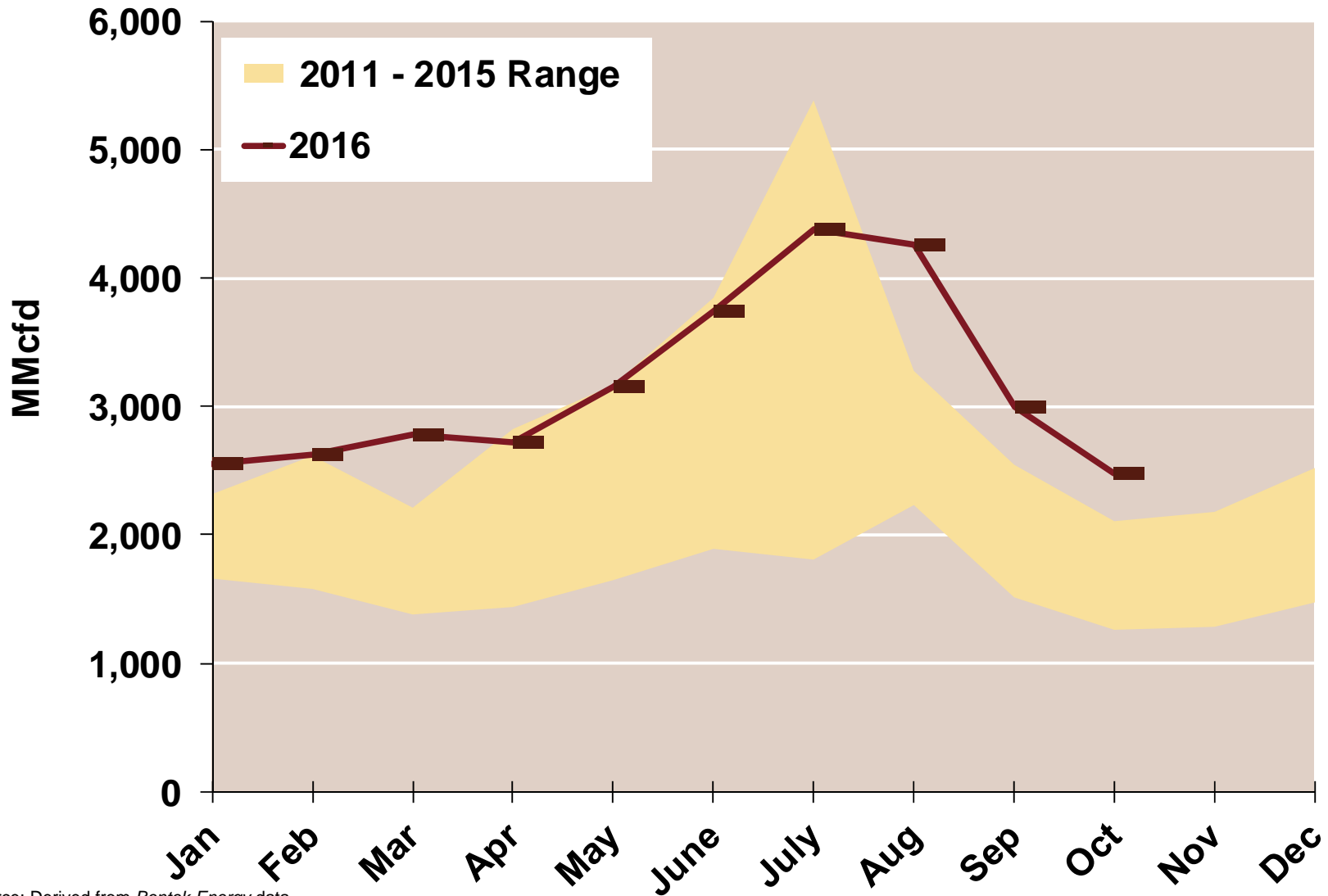


Source: Derived from *Bentek Energy* data

Note: Midwest is defined as Michigan, Indiana, Illinois, Wisconsin, Iowa, Minnesota, Nebraska, South Dakota, and North Dakota

Updated: Oct 2015

Midwest Natural Gas Consumption for Power Generation

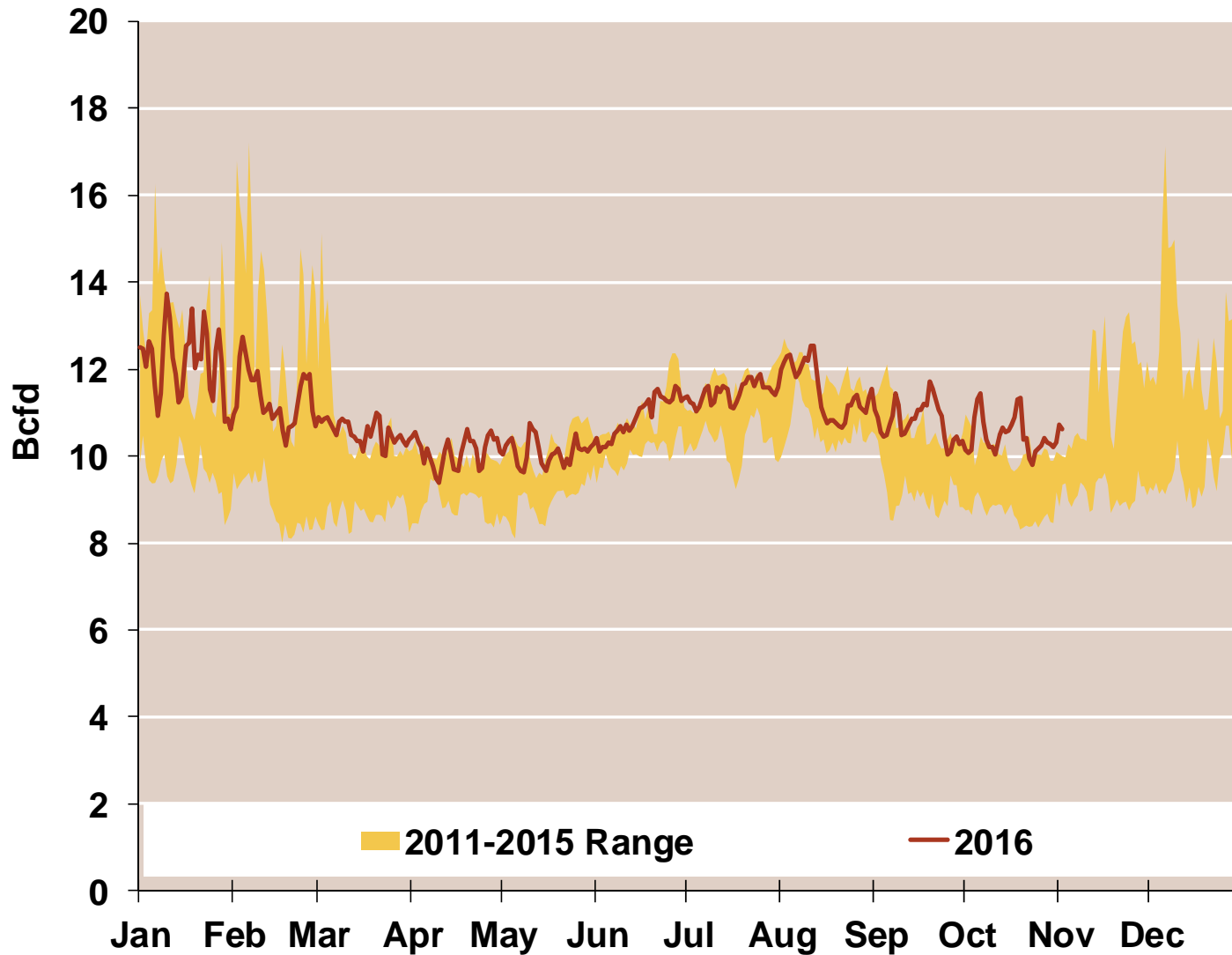


Source: Derived from Bentek Energy data

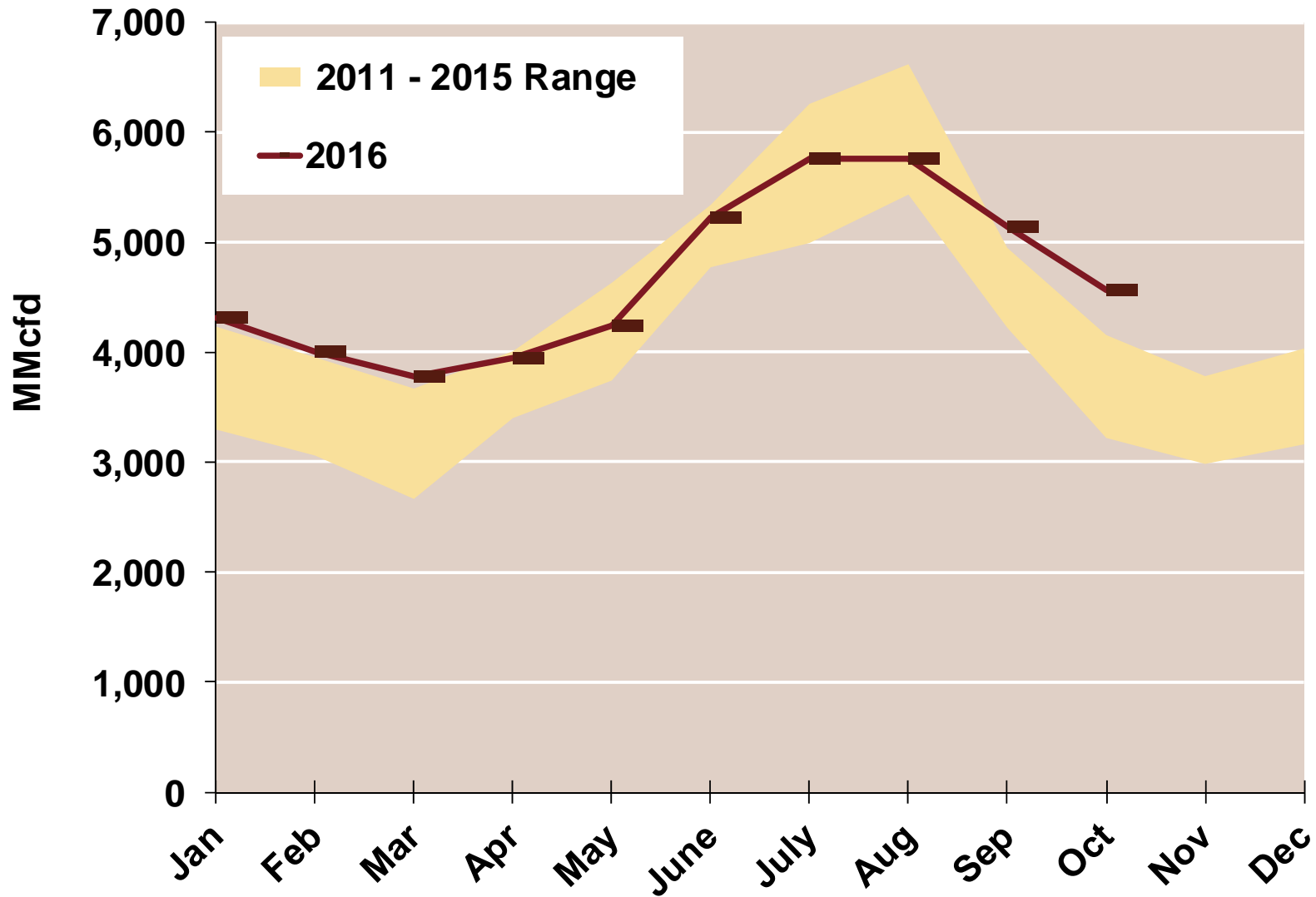
Note: Midwest is defined as Michigan, Indiana, Illinois, Wisconsin, Iowa, Minnesota, Nebraska, South Dakota, and North Dakota

Updated: Oct 2015

Daily Texas Natural Gas Demand All Sectors



Texas Natural Gas Consumption for Power Generation



Source: Derived from *Bentek Energy* data

Updated: Oct 2015