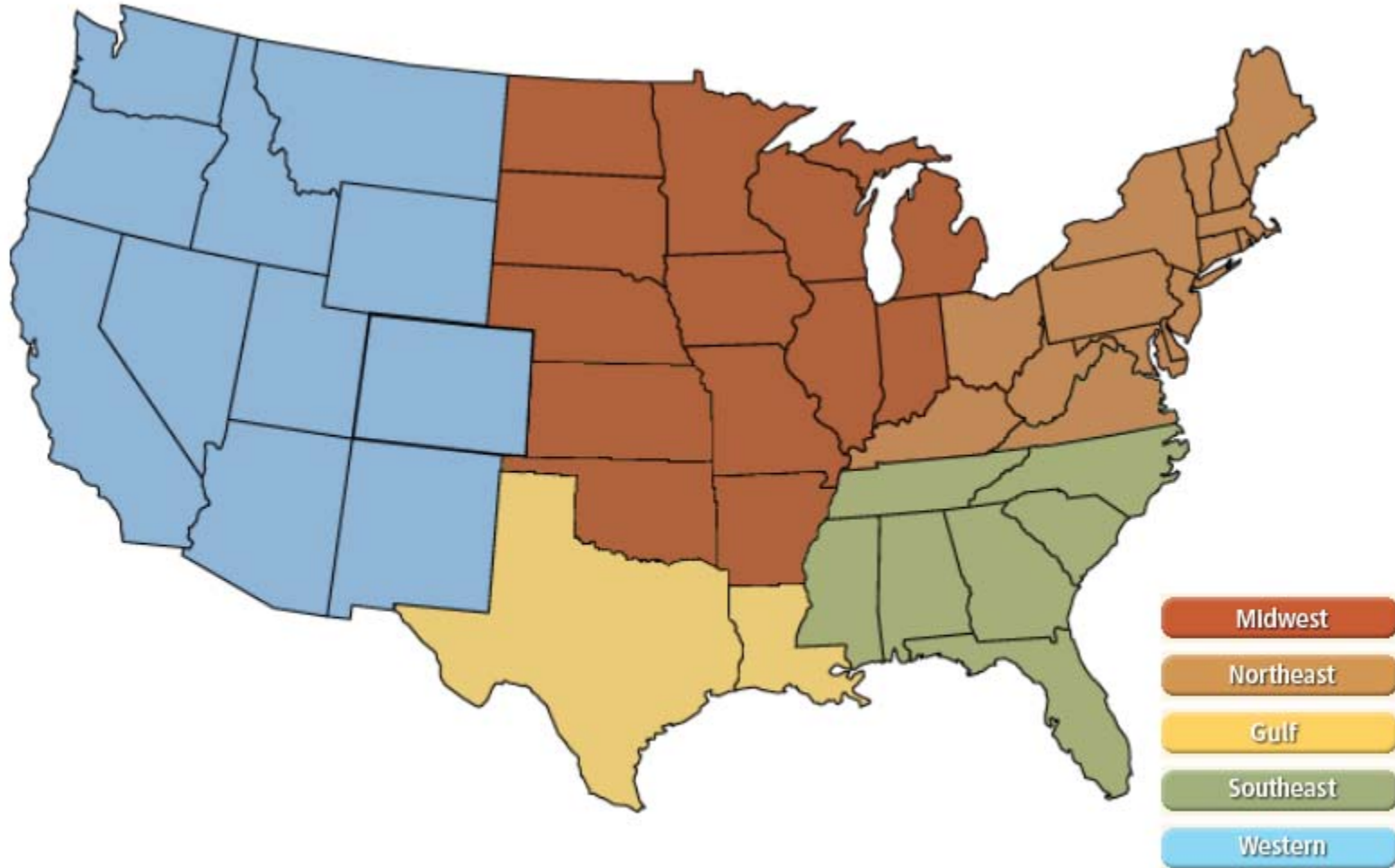
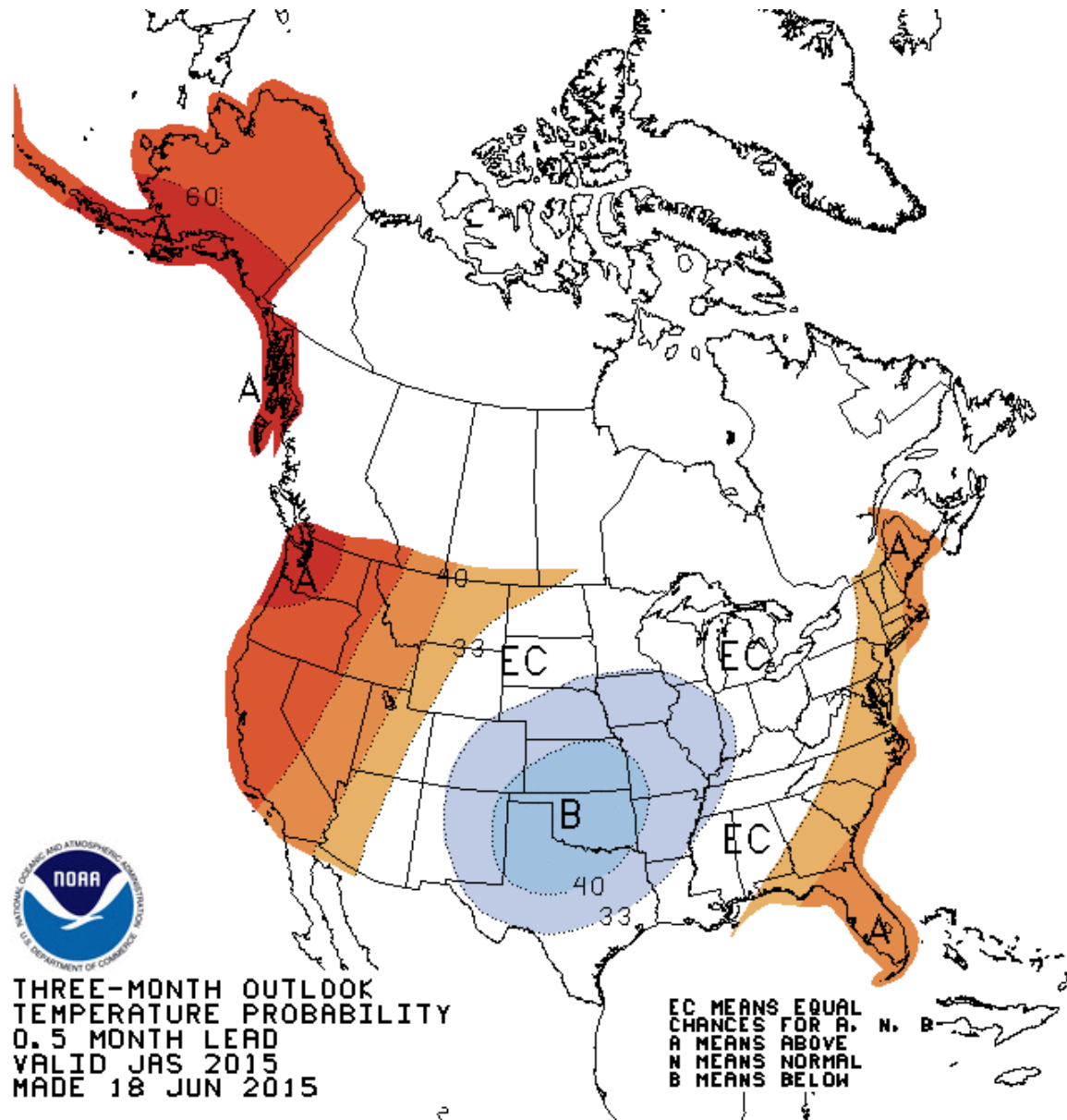


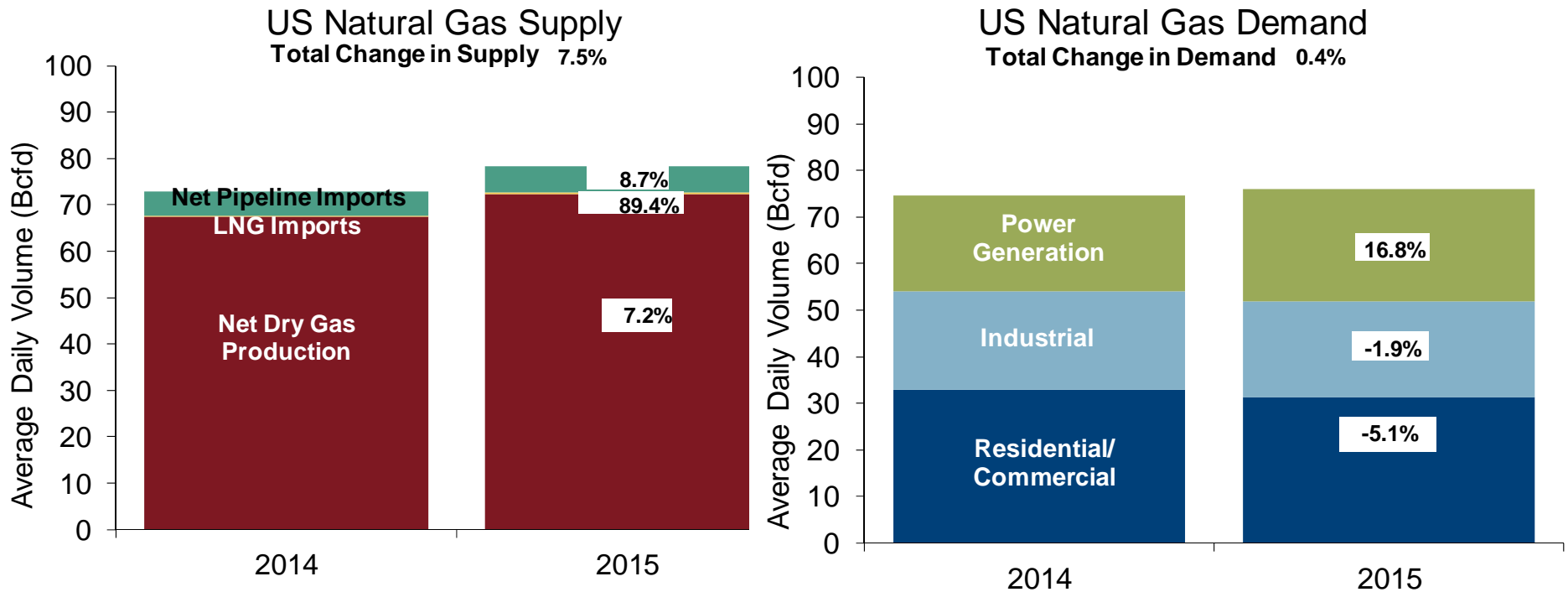
National



NOAA 3 Month Outlook

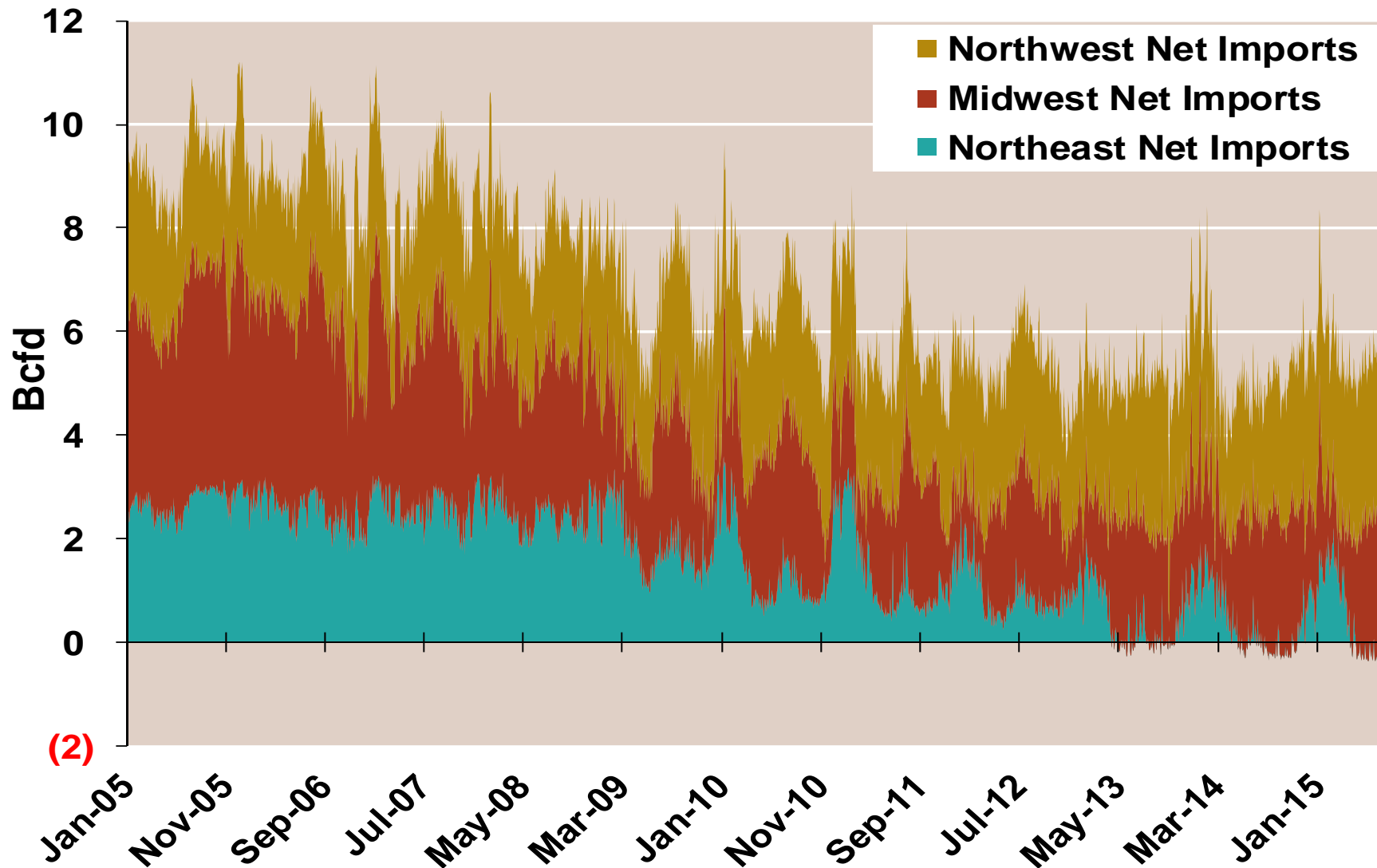


U.S. NG Supply and Demand Year to date Apr 2014 vs. Apr 2015

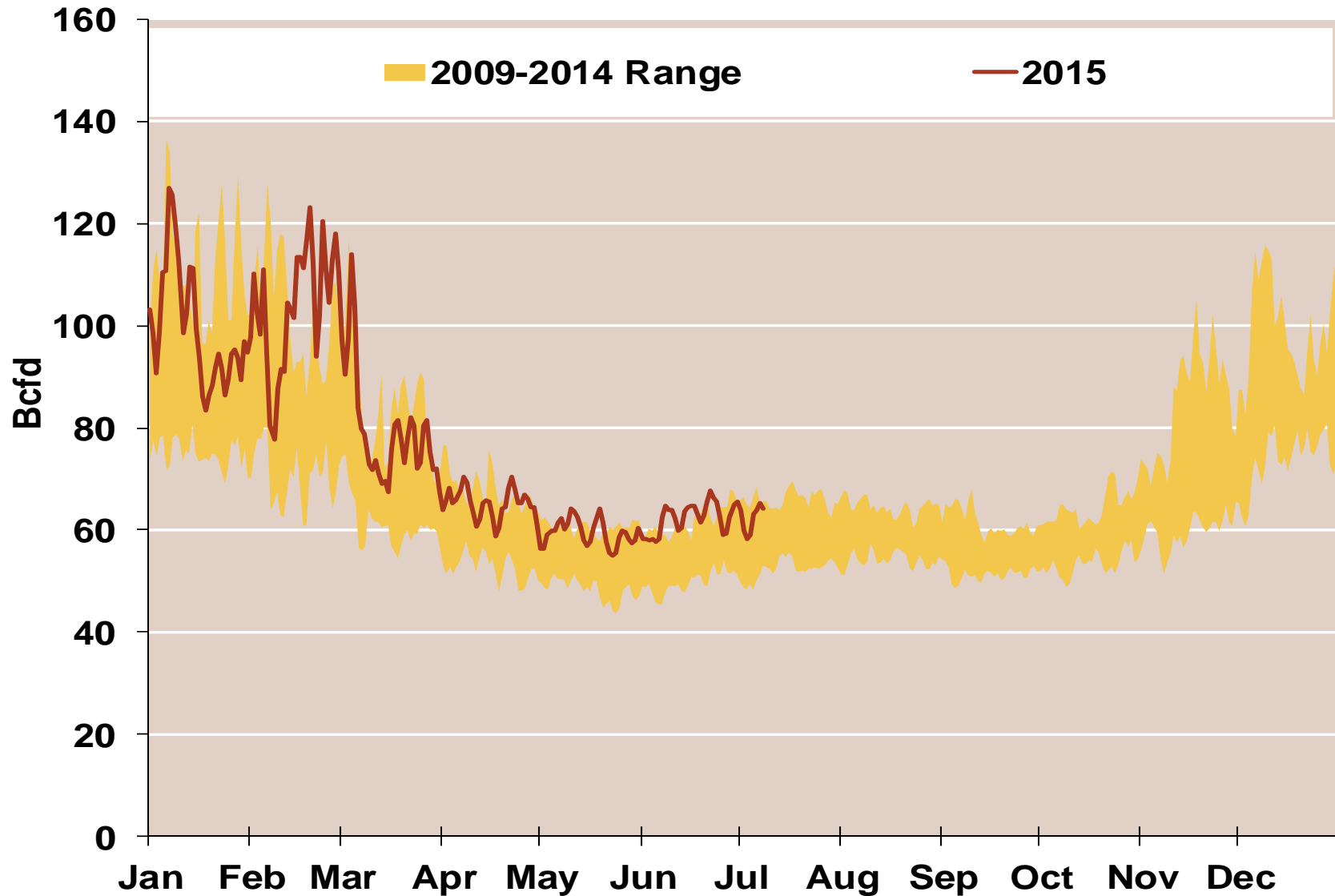


Note: Balance includes all amounts not attributable to other categories.
Source: Derived from *Bentek Energy* data

Regional Canadian Imports

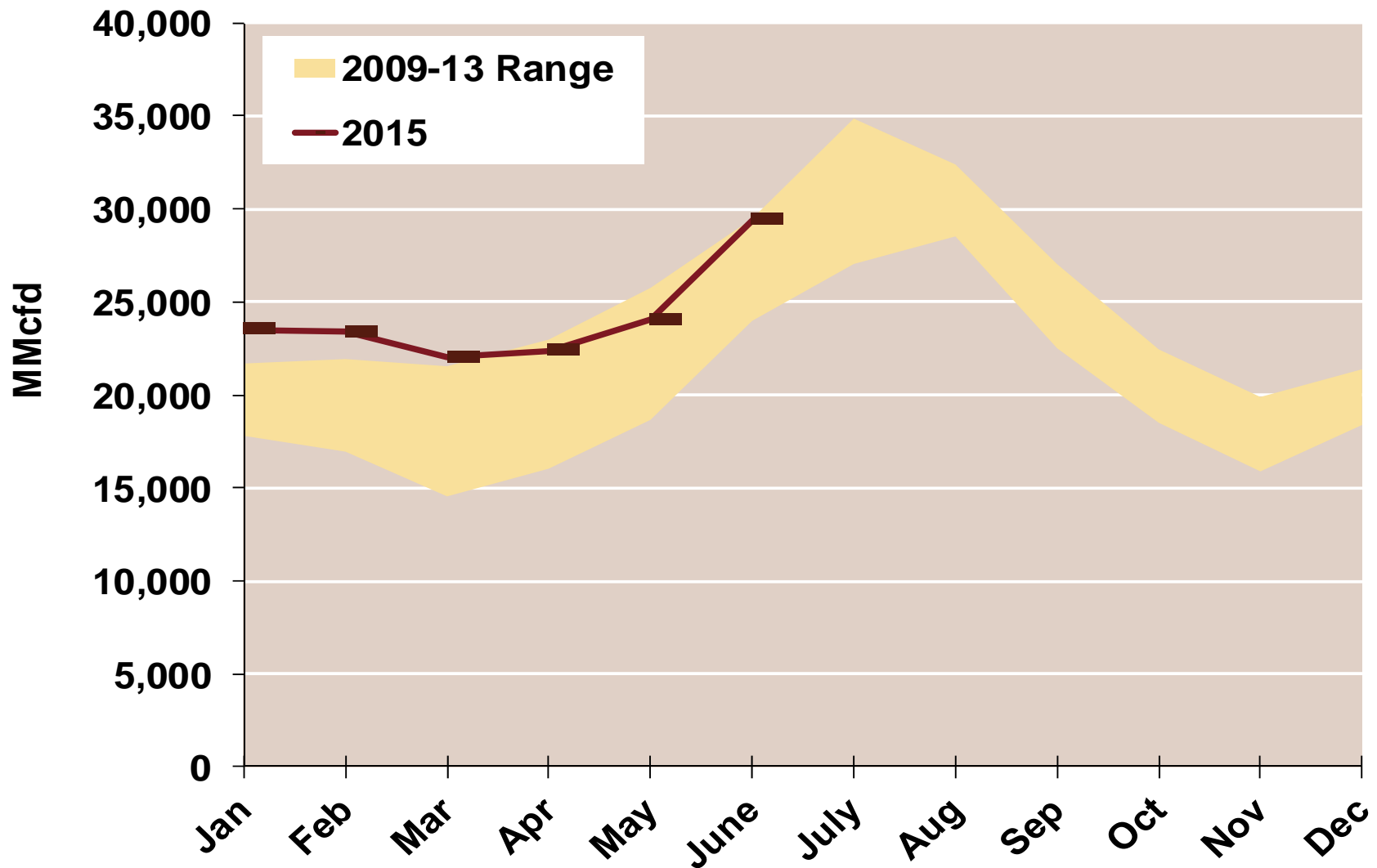


Total U.S. Natural Gas Demand All Sectors



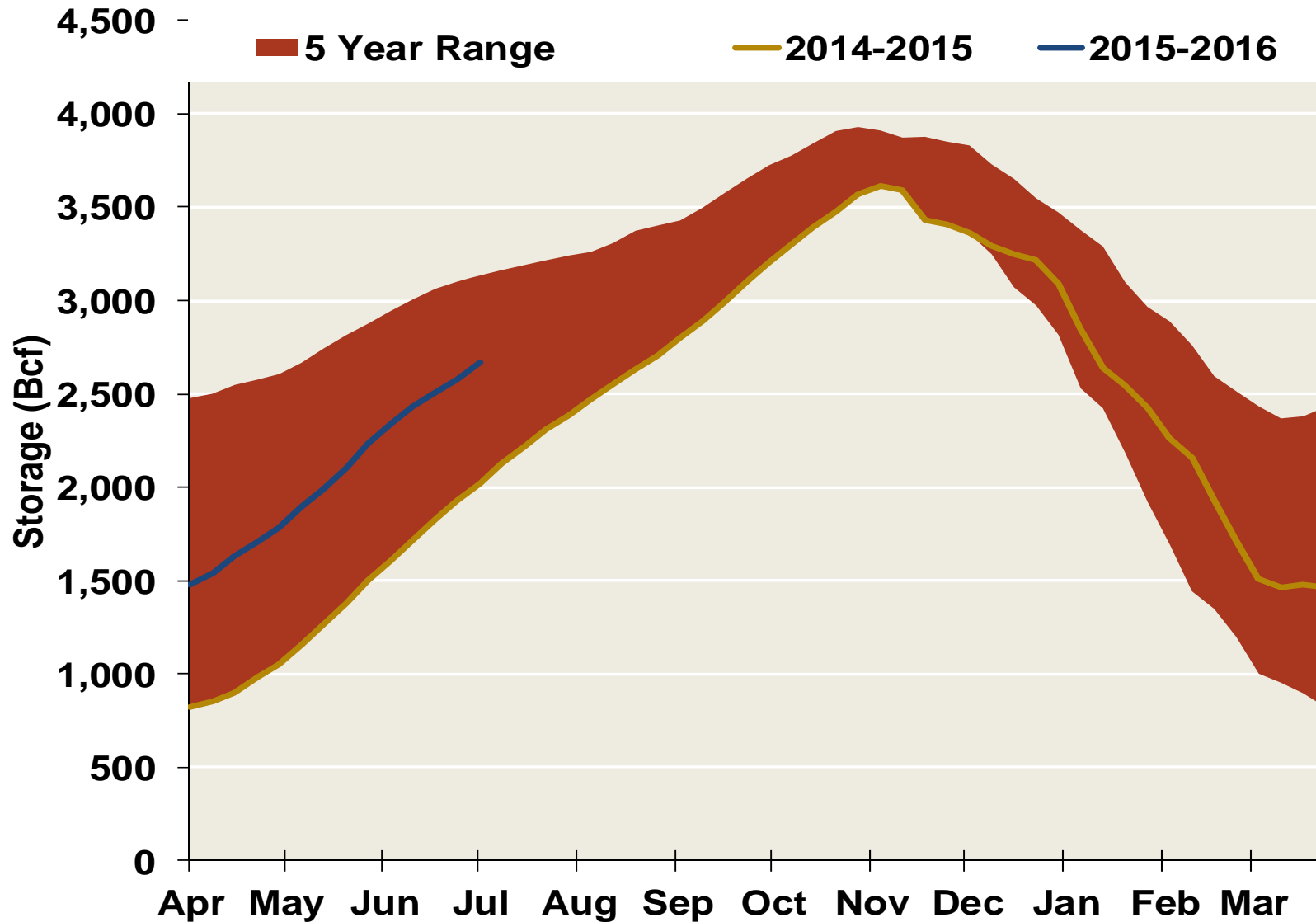
Source: Derived from *Bentek Energy* data, derived from interstate pipeline flow and modeled data.

U.S. Natural Gas Consumption for Power Generation



Source: Derived from *Bentek Energy* data

EIA Storage Inventories

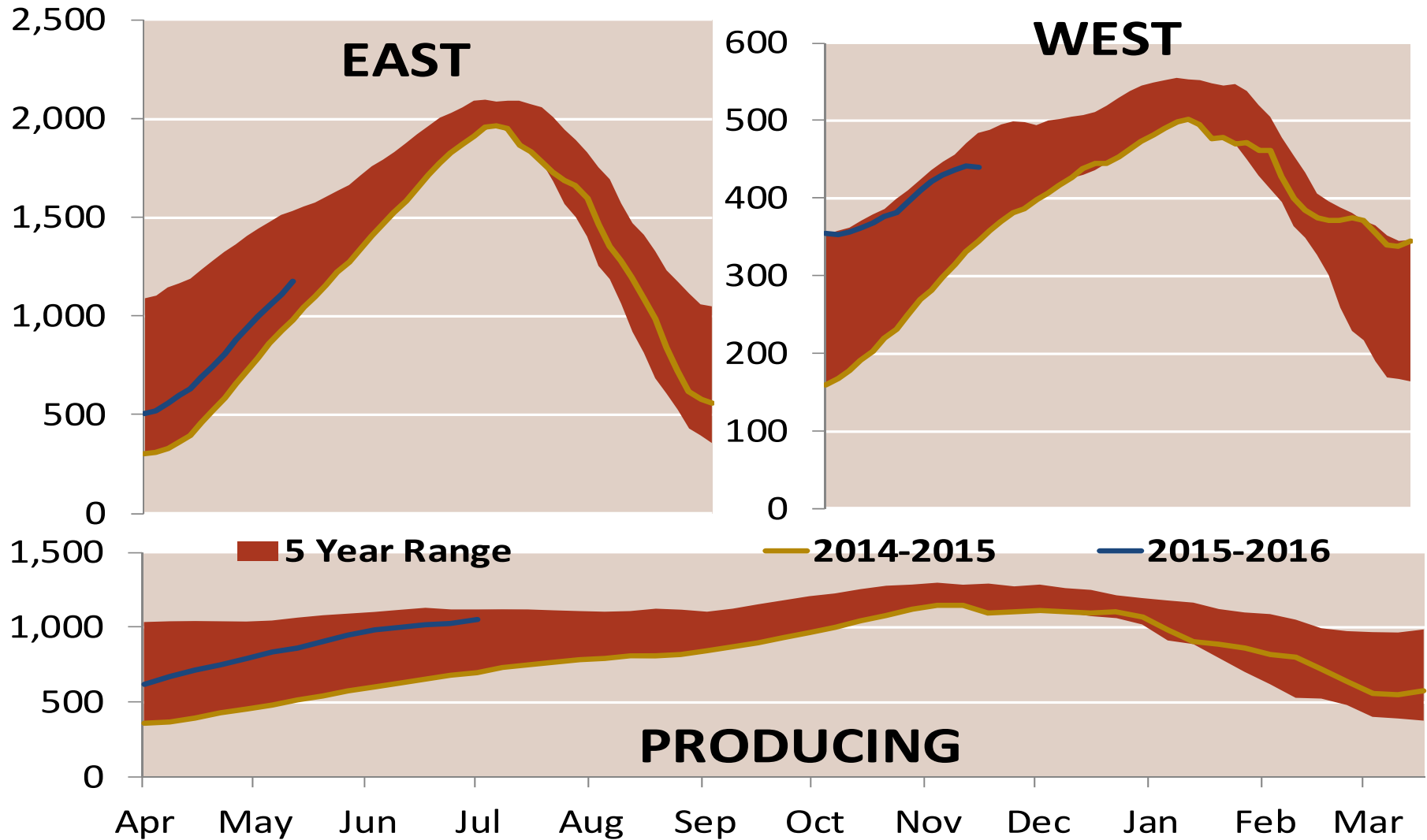


Notes:

Source: Derived from Bloomberg Data

Updated 7/14/2015

EIA Storage Inventories

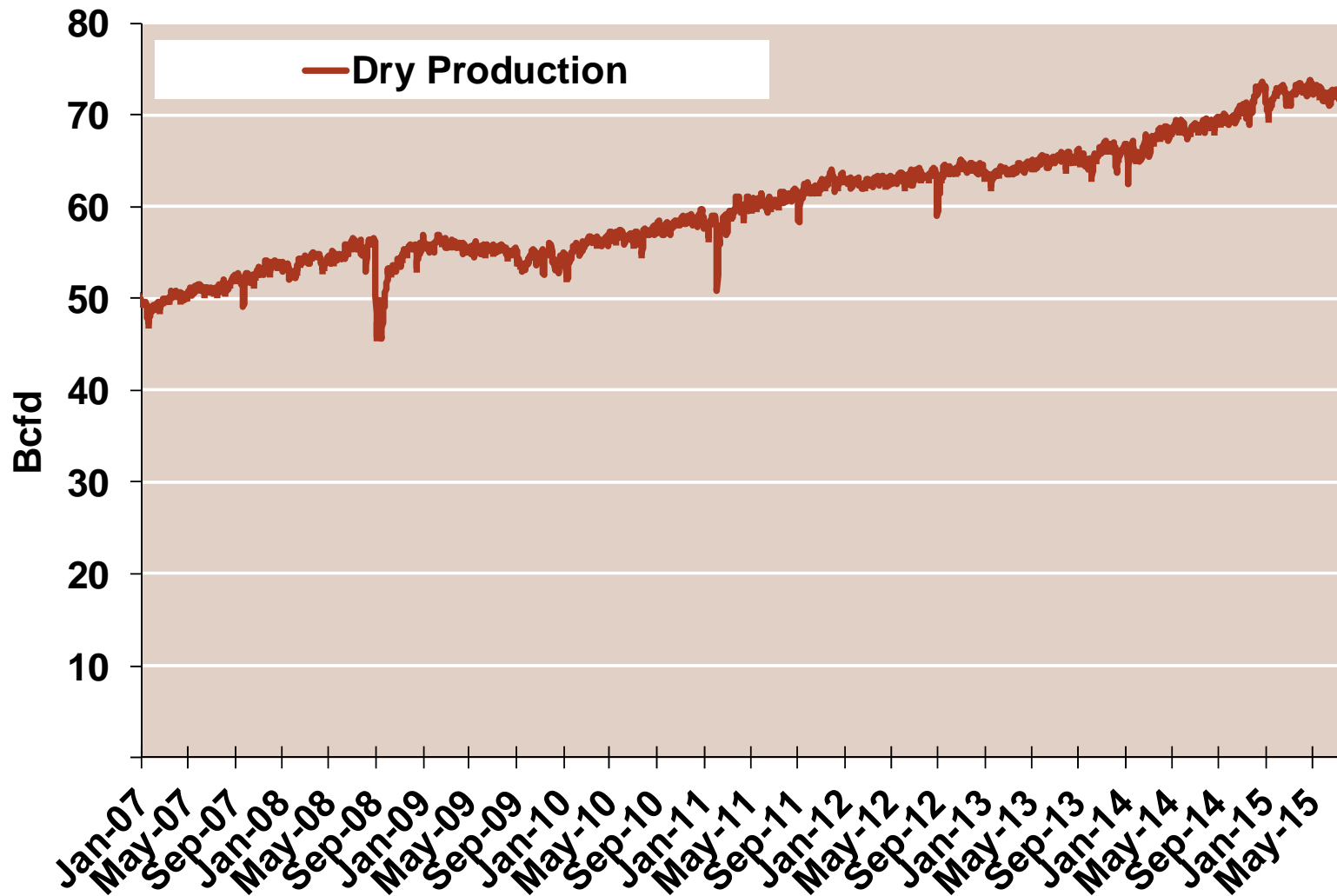


Notes:

Source: Derived from Bloomberg Data

Updated 7/14/2015

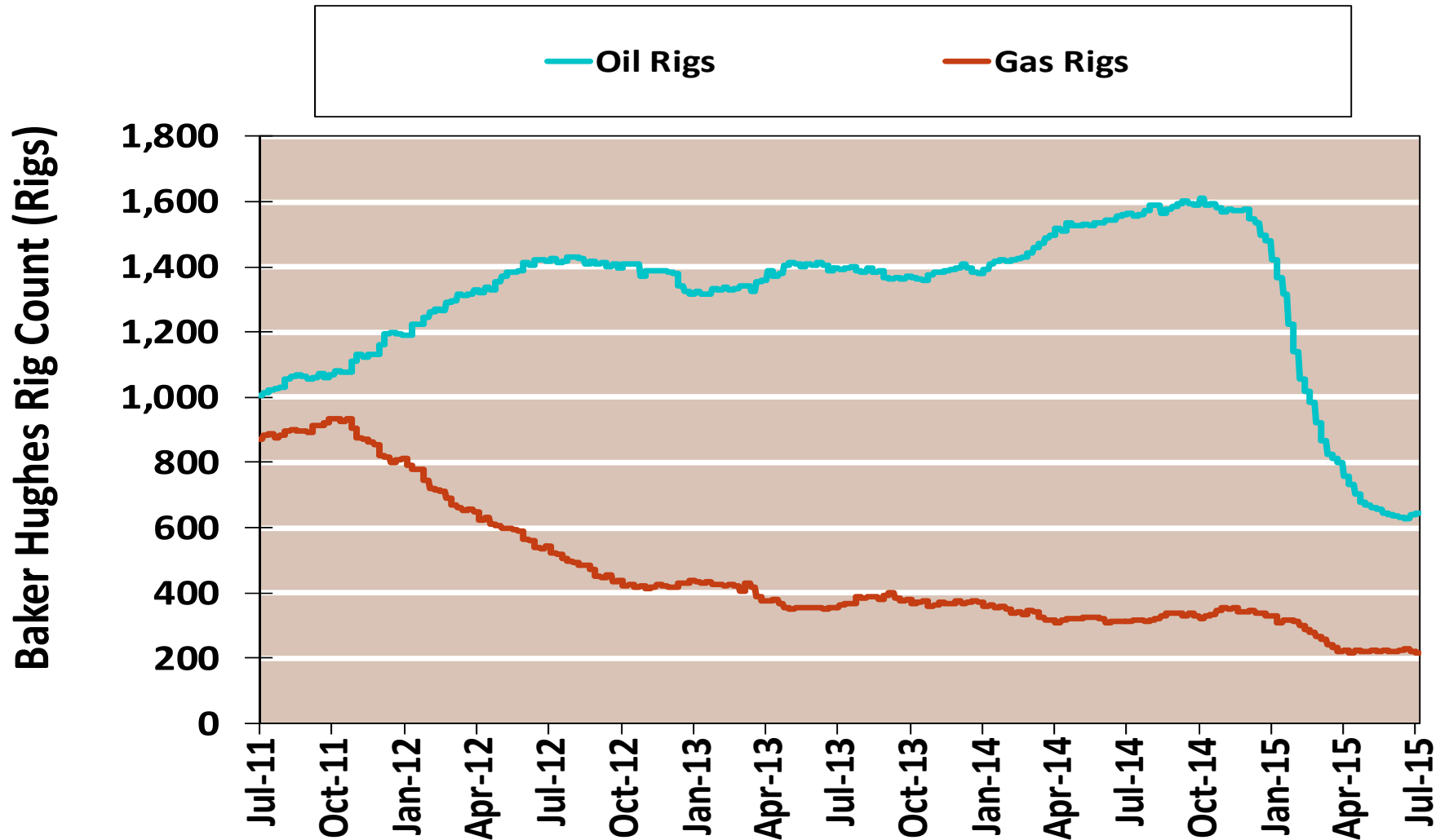
Monthly U.S. Dry Gas Production – Lower 48 States



Updated: 7/14/2015

Note: Prior to July 2010, chart was derived from a combination of EIA and Bentek Energy data
Source: Derived from Bentek Energy data

NG Rigs by Fuel Type

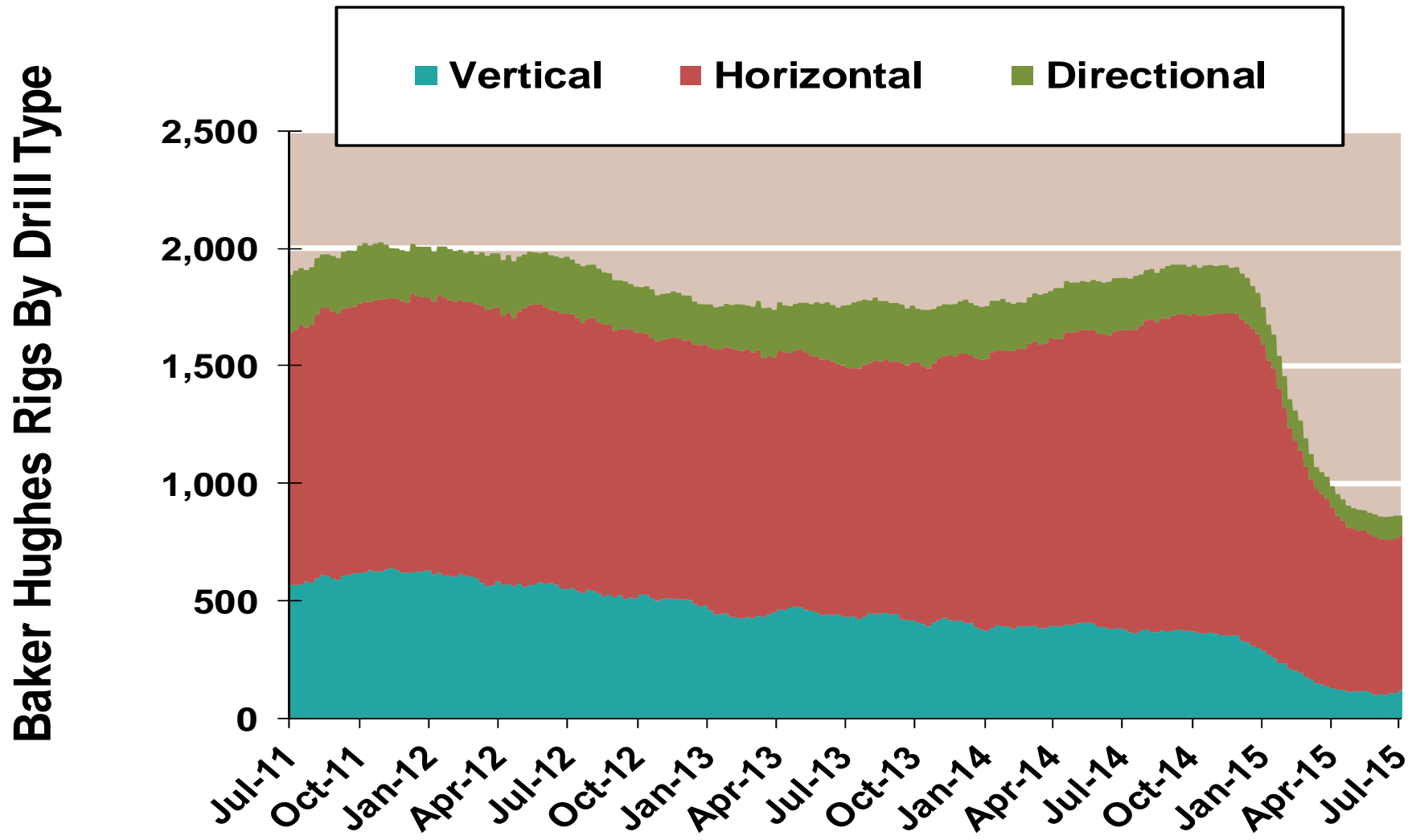


Notes:

Source: Derived from Bloomberg data

Updated 7/14/2015

NG Rig by Direction

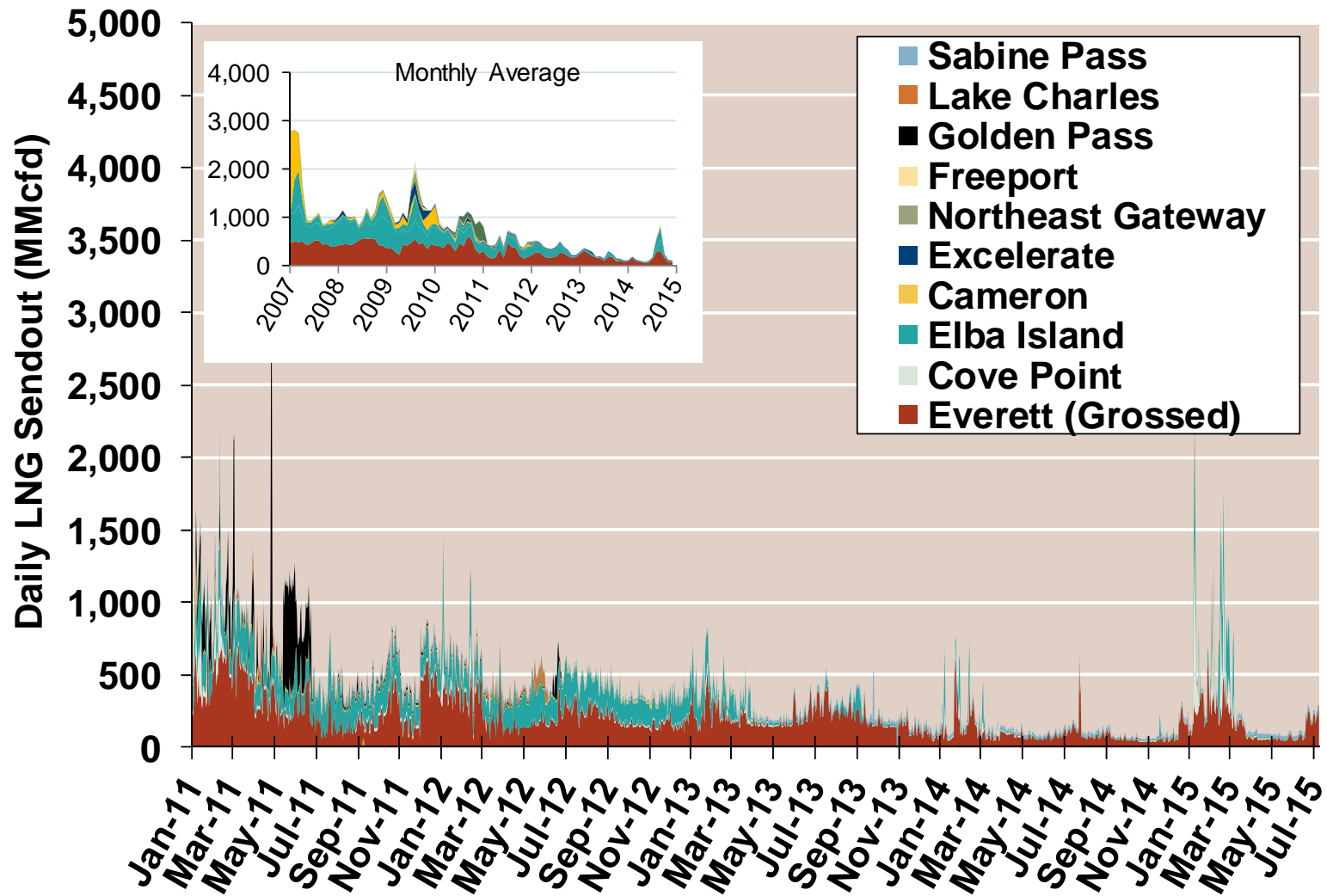


Notes:

Source: Derived from Bloomberg data

Updated 7/14/2015

Daily Gas Sendout from Existing U.S. LNG Facilities



Notes: Everett data includes flows onto the AGT and TGP interstate lines, plus estimates of flows to the Mystic 7 power plant, Keyspan Boston Gas, and LNG trucked out of the terminal. Excludes flows to the Freeport LNG which flows via intrastate pipelines and flows to the Mystic 8 and 9 power plants.

Source: Derived from *Bentek Energy* data

Updated:

June 2015

1

World LNG Estimated Landed Prices: May-15



Source: Waterborne Energy, Inc. Data in \$US/MMBtu

Note: Includes information and Data supplied by IHS Global Inc. and its affiliates ("IHS"); Copyright (publication year) all rights reserved.

Landed prices are the monthly average of weekly trades from the prior month.

Updated Apr-2016