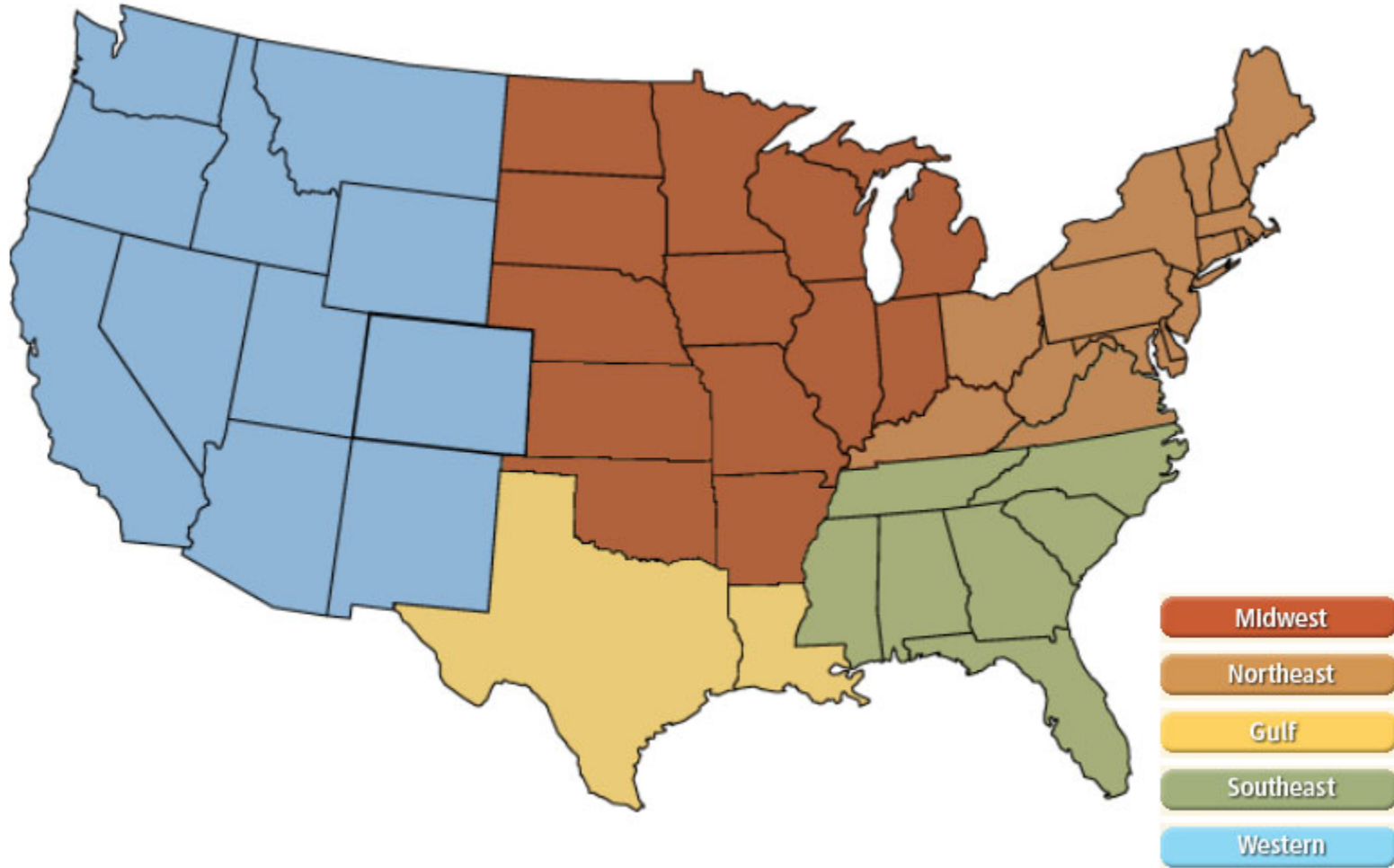
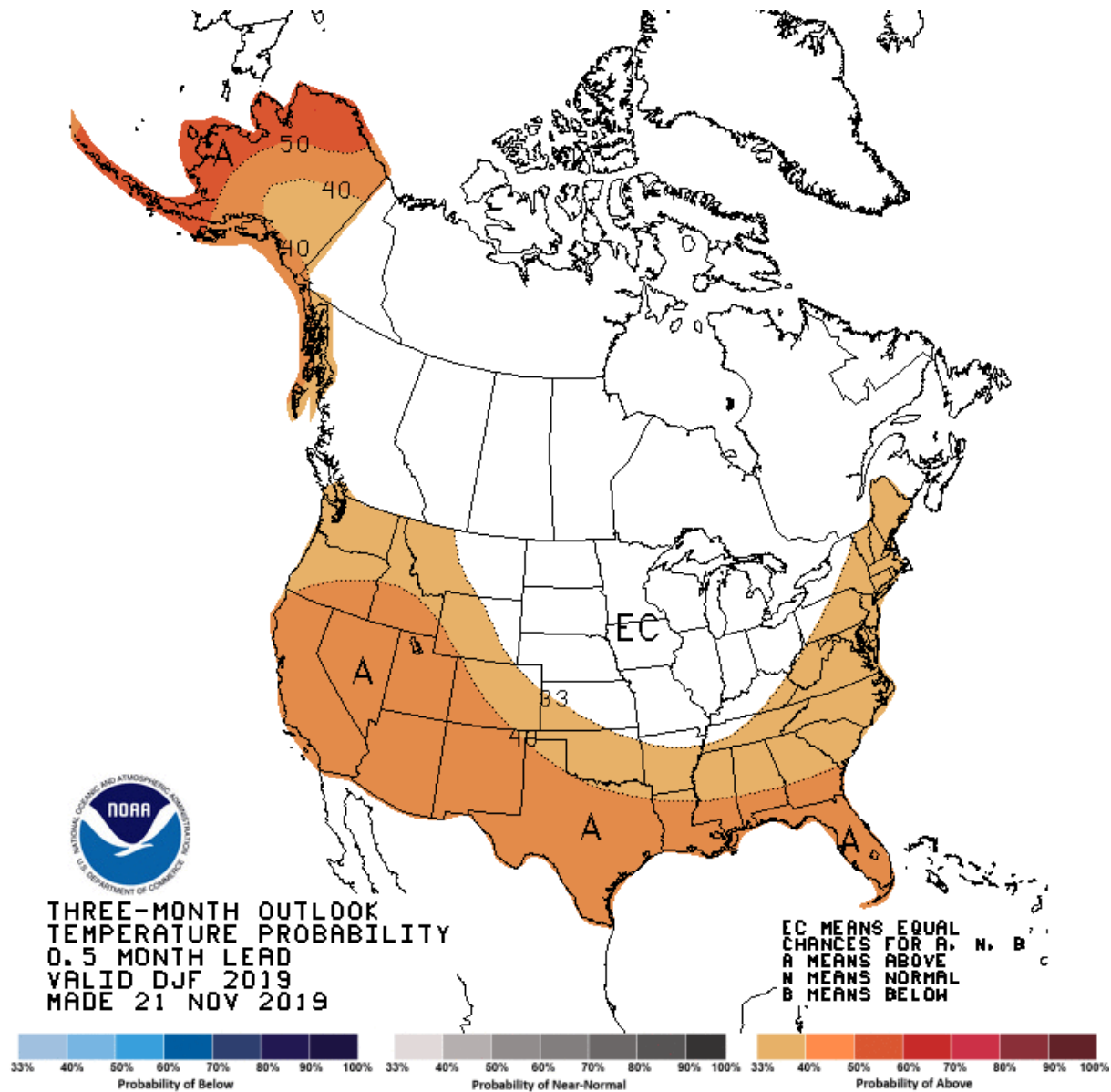


National



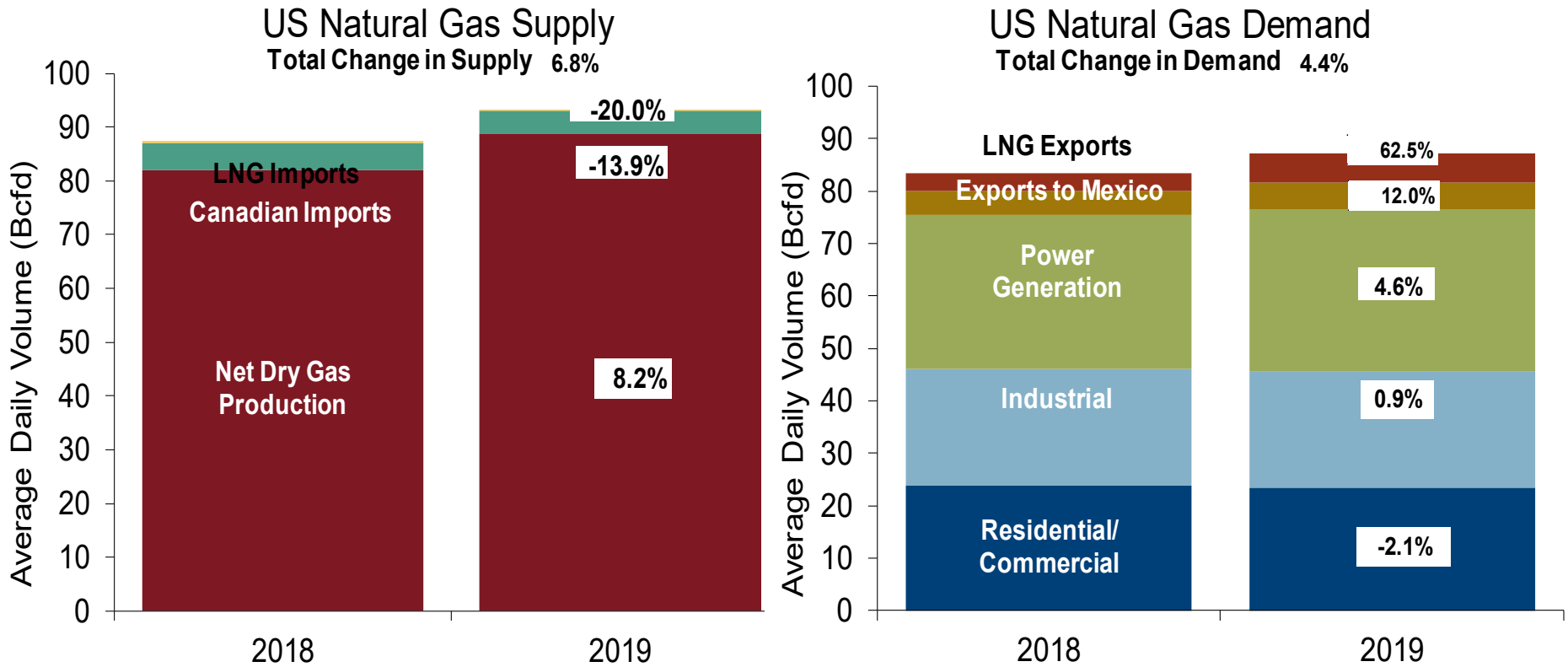
NOAA 3 Month Outlook



National Natural Gas Market Overview: U.S. Supply and Consumption

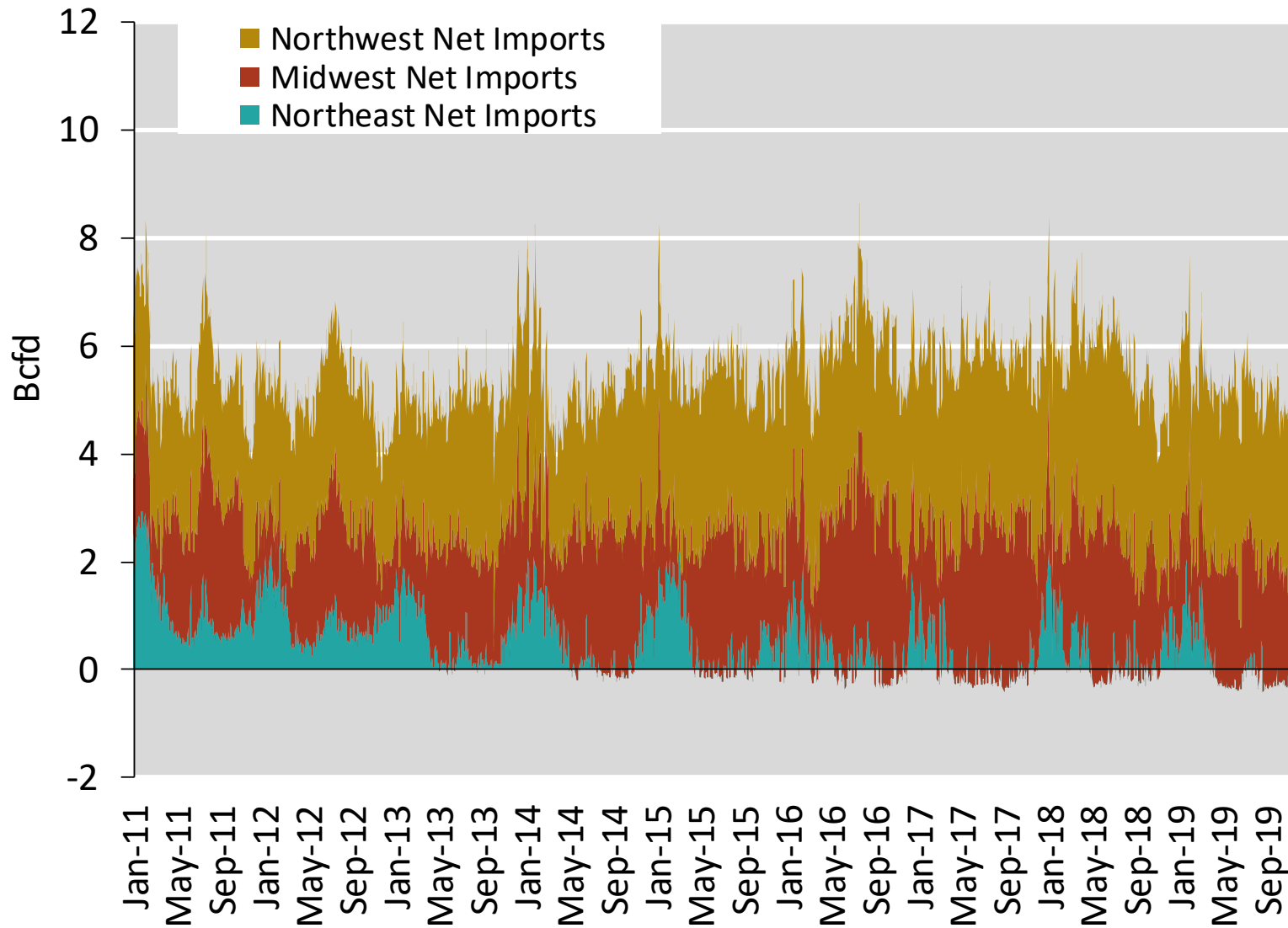
Federal Energy Regulatory Commission • Market Oversight • www.ferc.gov/oversight

U.S. NG Supply and Demand Nov-18 YTD vs. Nov-19 YTD

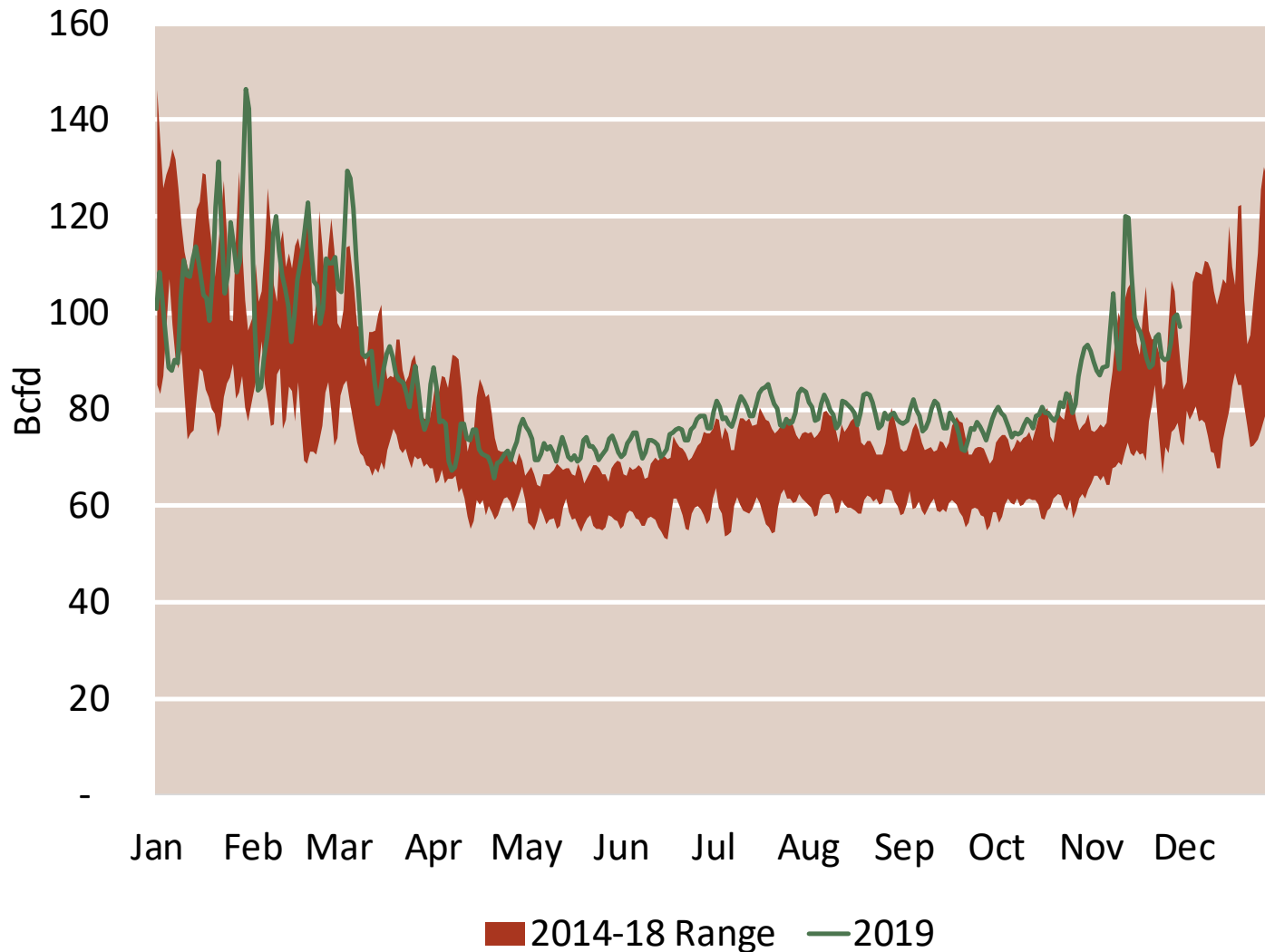


Note: Balance includes all amounts not attributable to other categories.
Source: Derived from *Bentek Energy* data

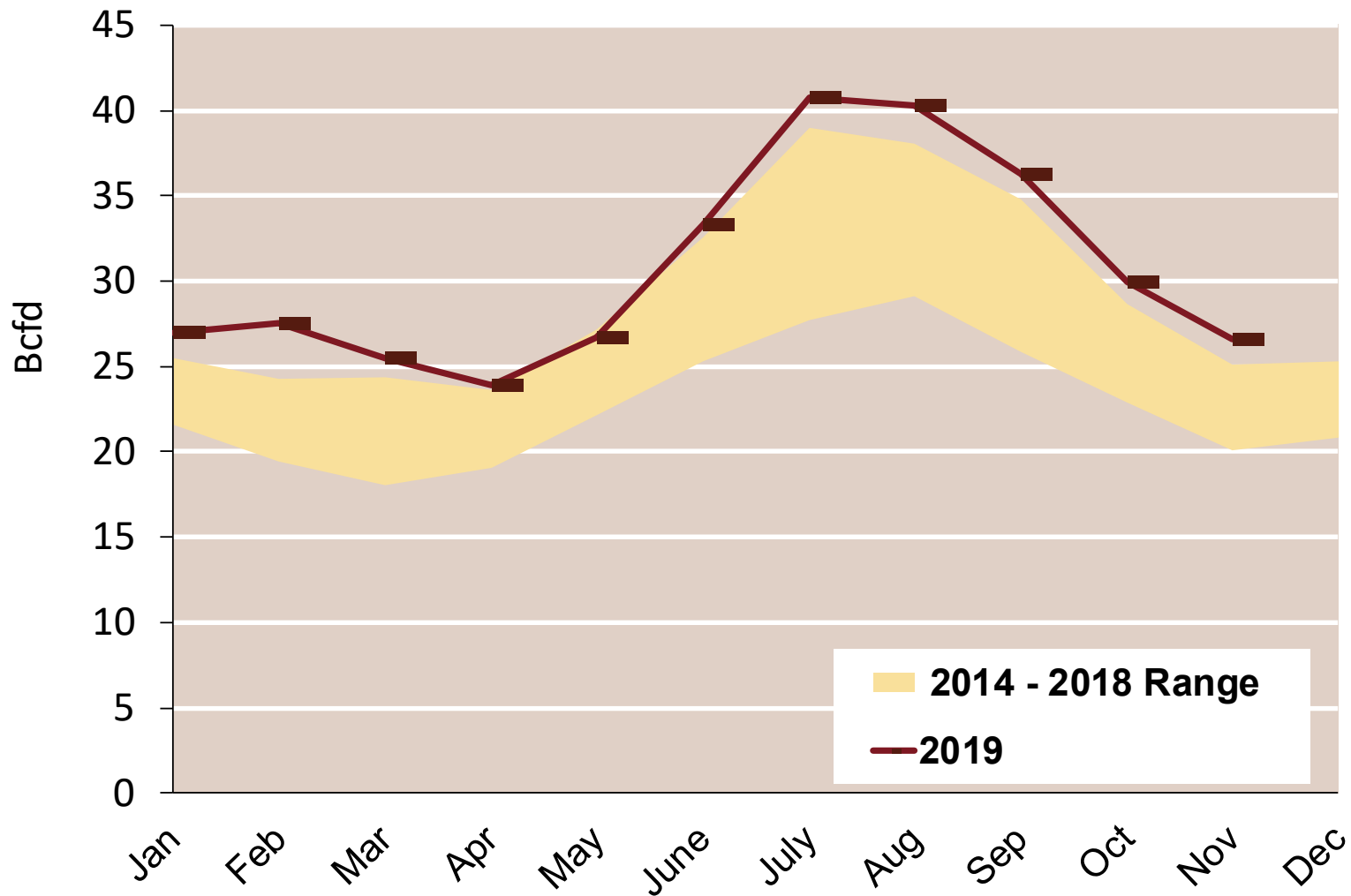
Regional Canadian Imports



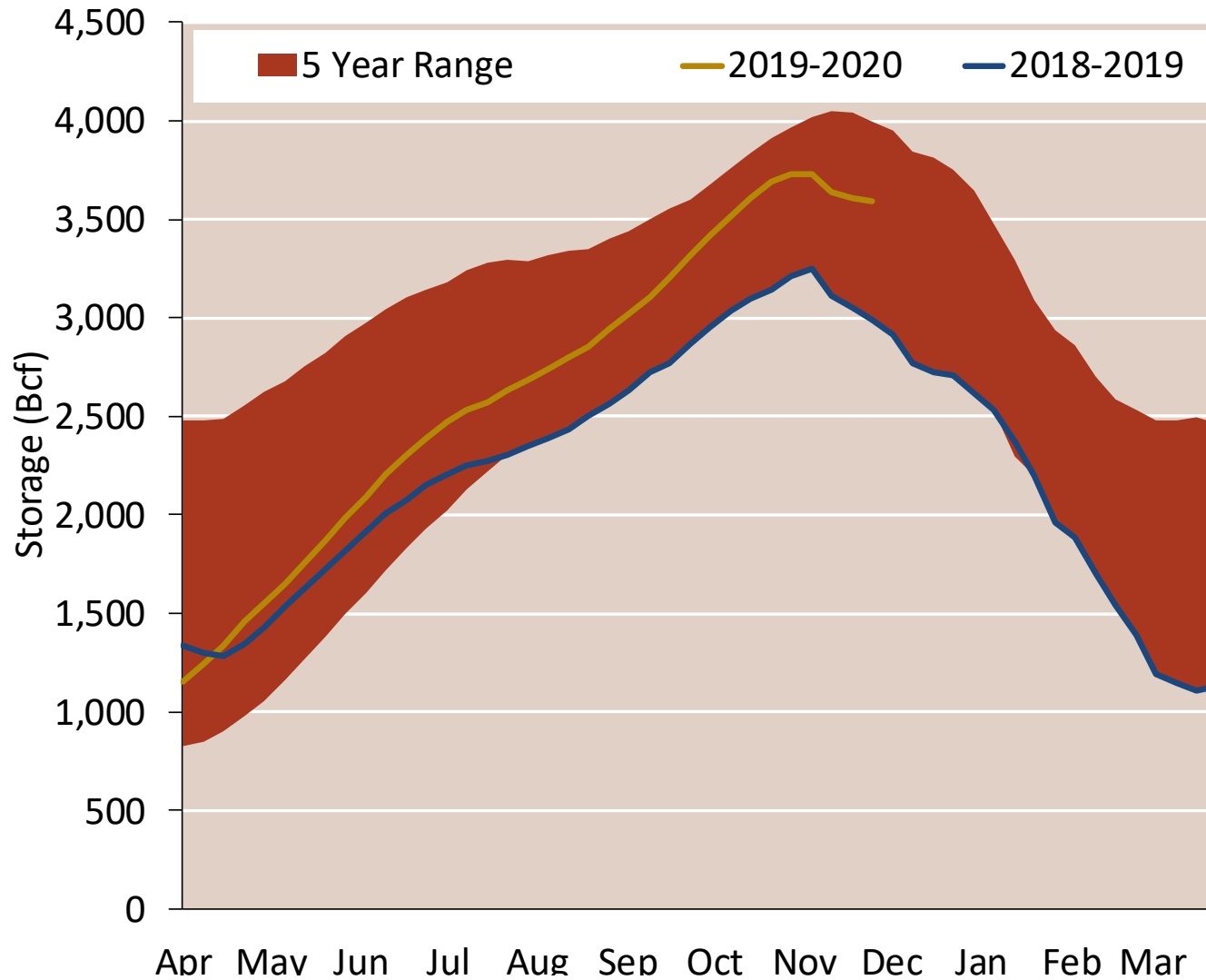
Total U.S. Natural Gas Demand All Sectors



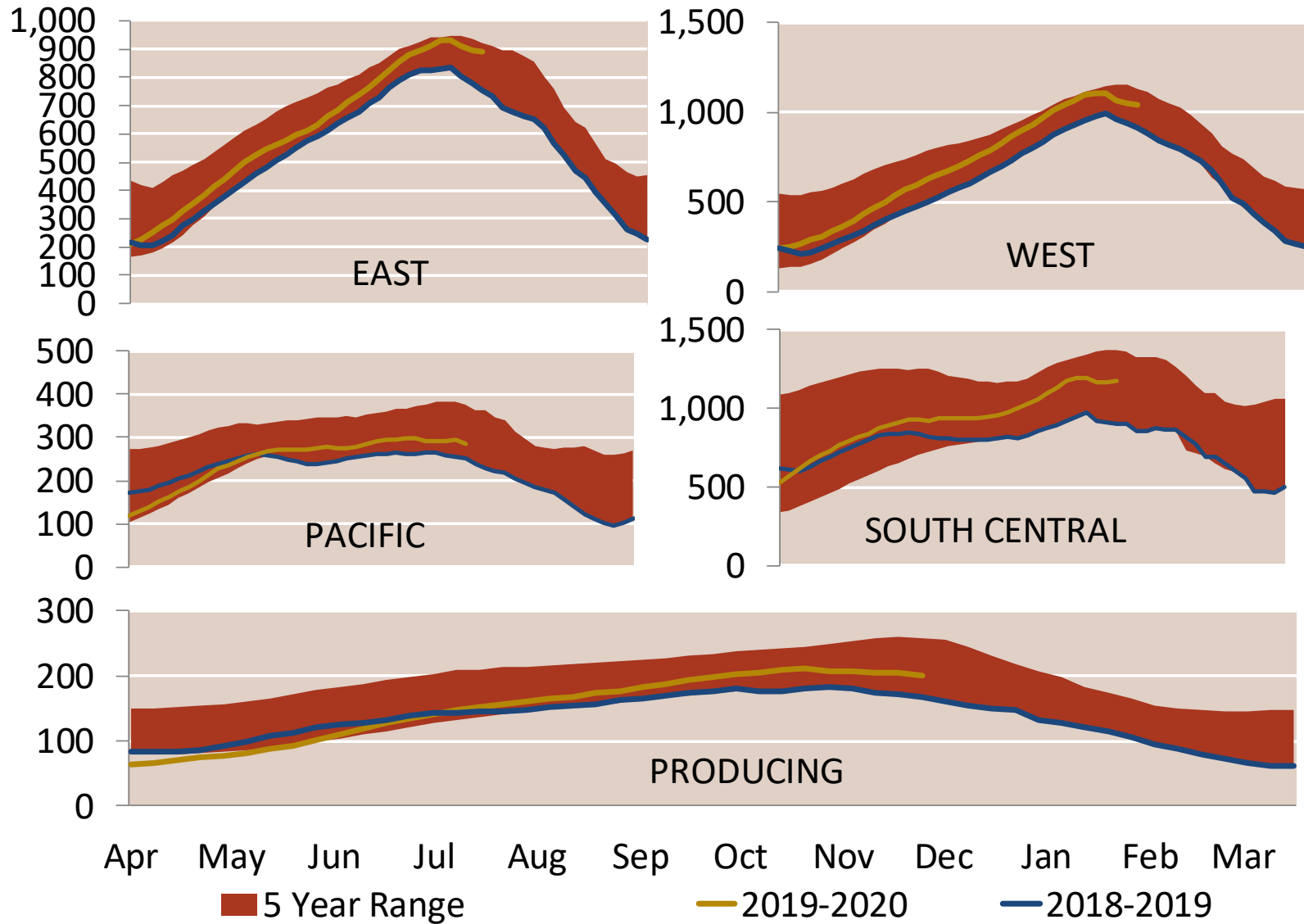
U.S. Natural Gas Consumption for Power Generation



EIA Storage Inventories



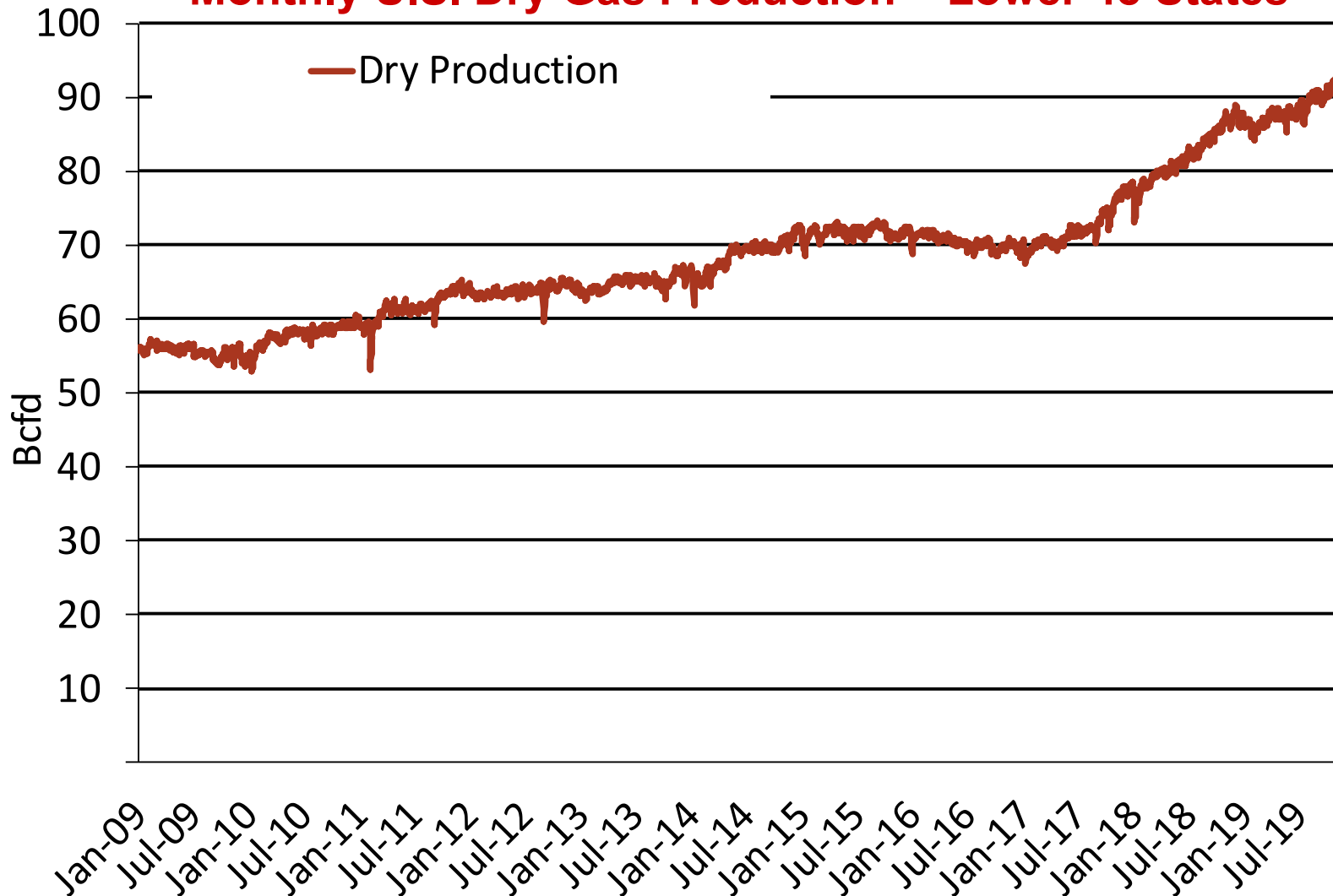
EIA Storage Inventories



National Natural Gas Market Overview: Monthly U.S. Dry Gas Production

Federal Energy Regulatory Commission • Market Oversight • www.ferc.gov/oversight

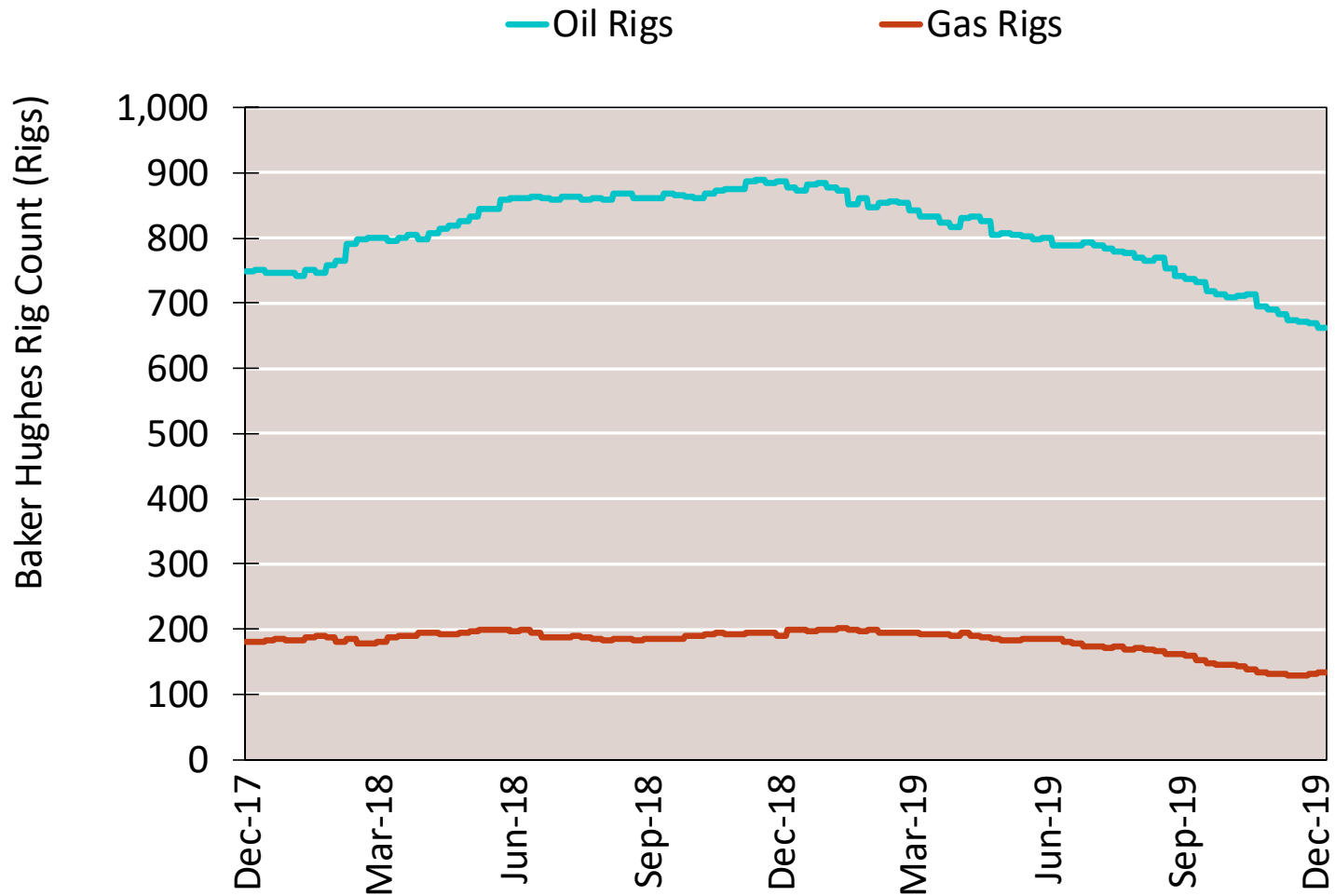
Monthly U.S. Dry Gas Production – Lower 48 States



Note: Prior to July 2010, chart was derived from a combination of EIA and Bentek Energy data
Source: Derived from Bentek Energy data

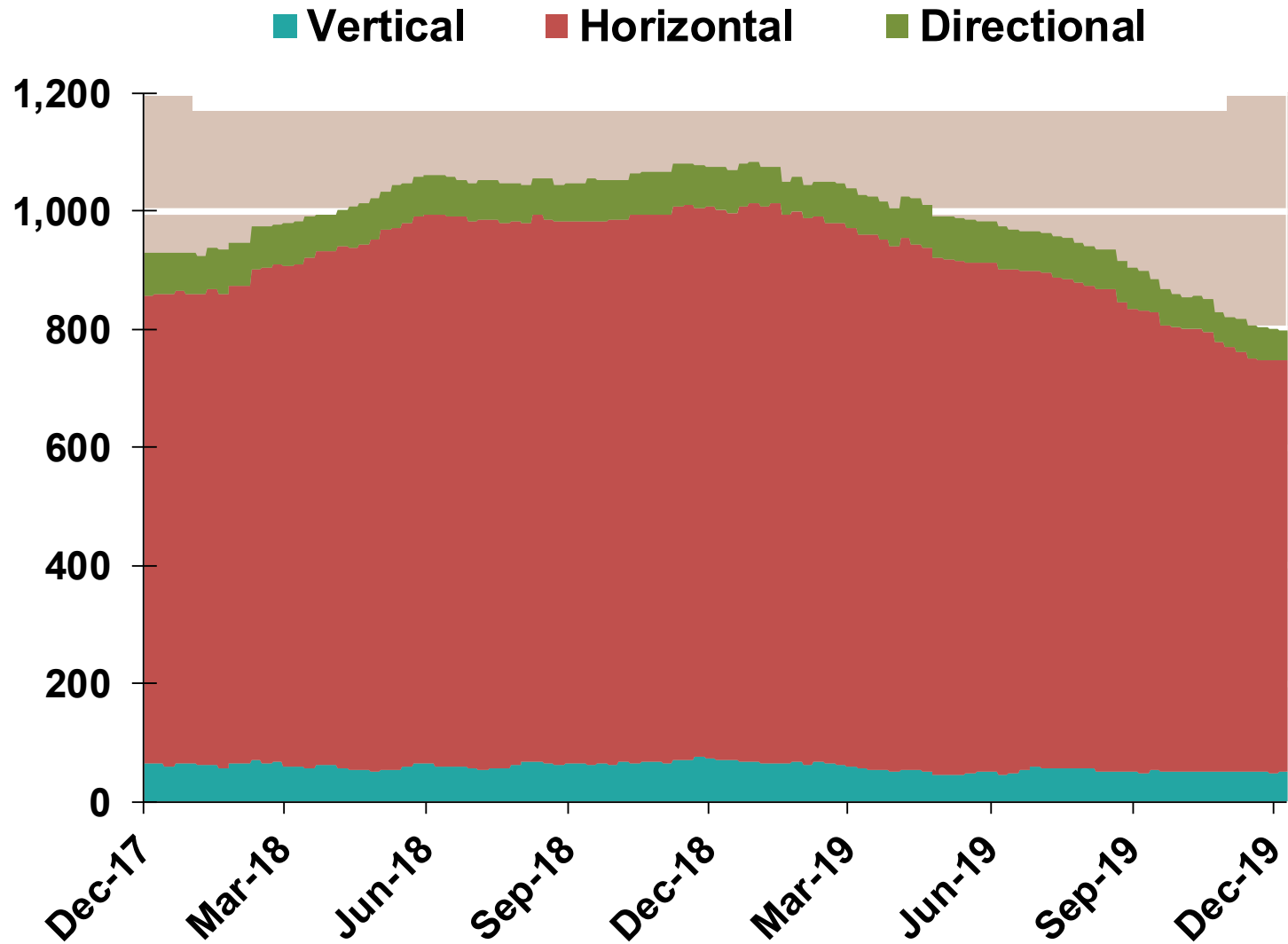
Updated: Dec-2019

NG Rigs by Fuel Type

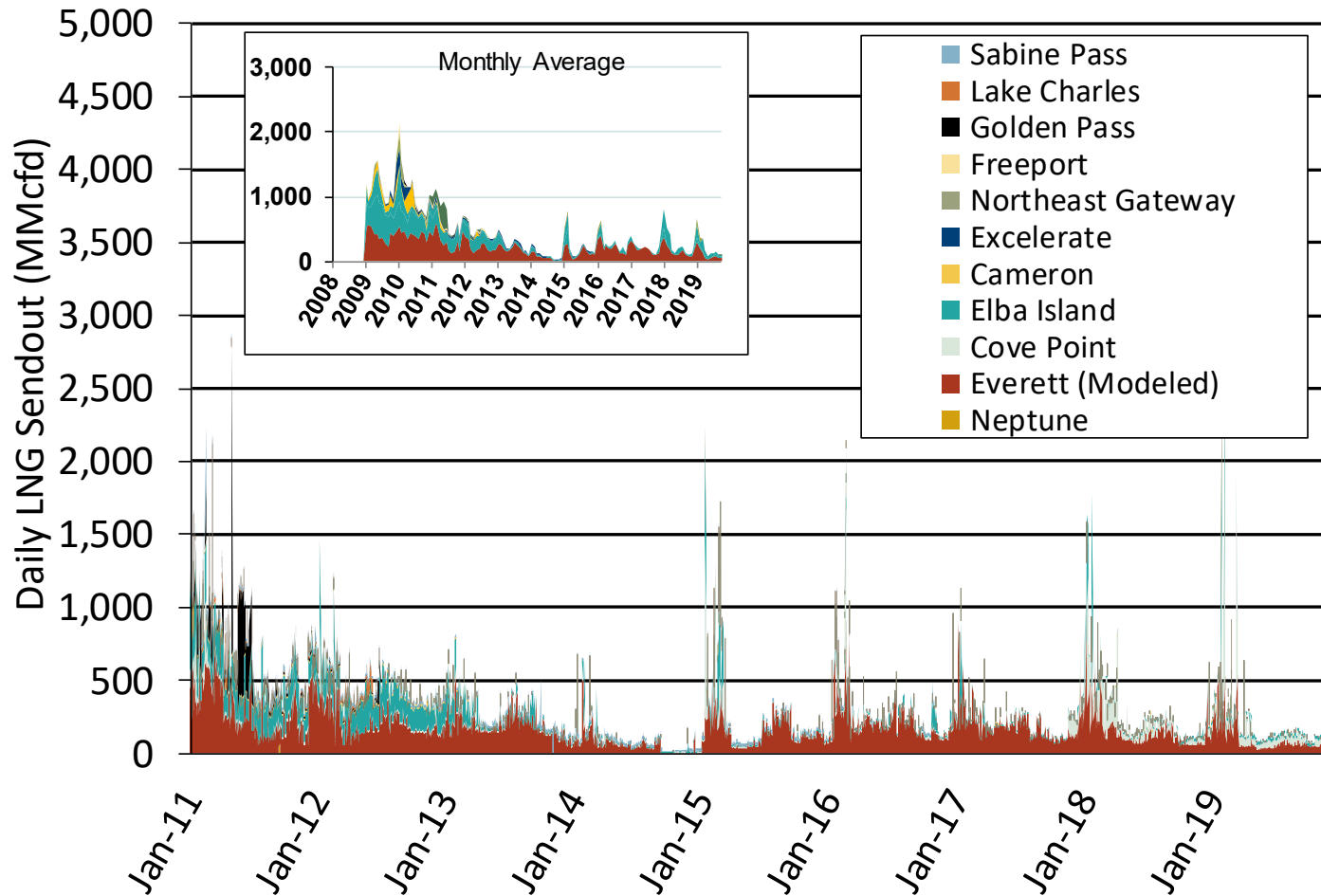


NG Rig by Direction

Baker Hughes Rigs By Drill Type



Daily Gas Sendout from Existing U.S. LNG Facilities



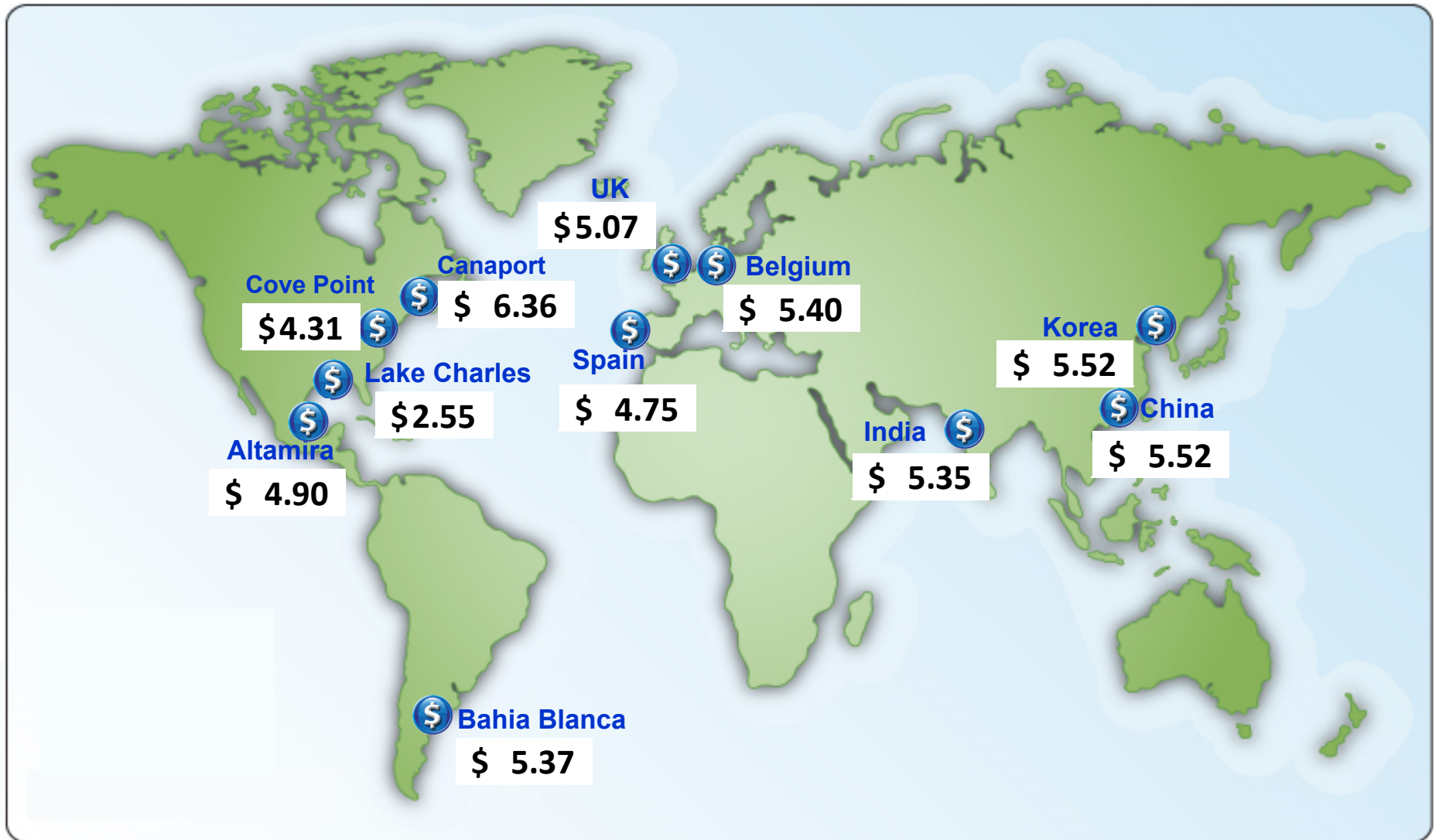
Notes: Everett data includes flows onto the AGT and TGP interstate lines, plus estimates of flows to the Mystic 7 power plant, Keyspan Boston Gas, and LNG trucked out of the terminal. Excludes flows to the Freeport LNG which flows via intrastate pipelines and flows to the Mystic 8 and 9 power plants.

Source: Derived from *Bentek Energy* data

Updated

Dec-2019

World LNG Estimated Landed Prices: Nov-19



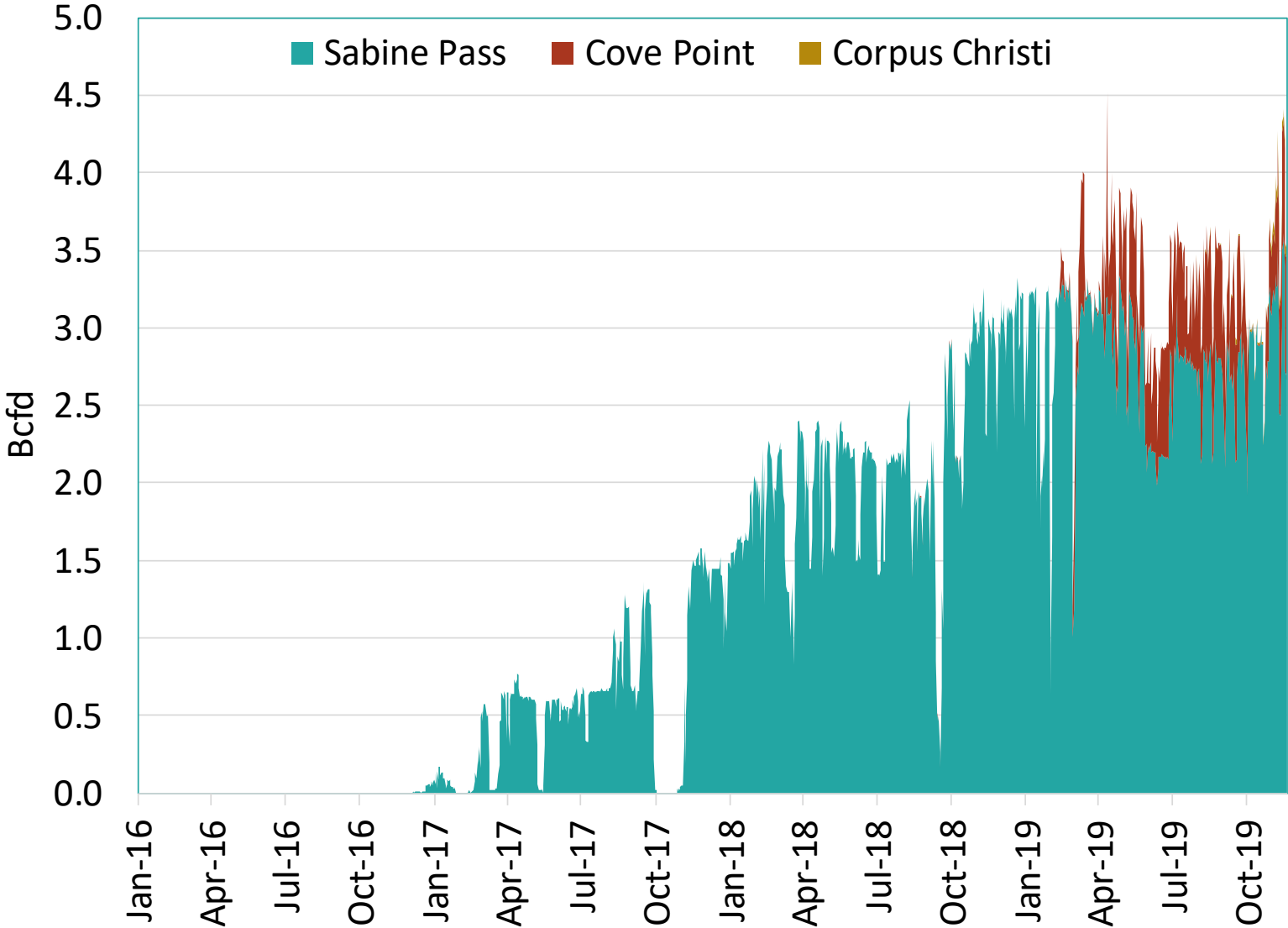
Source: *Waterborne Energy, Inc.* Data in \$US/MMBtu.

Note: Includes information and Data supplied by IHS Global Inc. and its affiliates ("IHS"); Copyright (publication year) all rights reserved. Prices are the monthly average of the weekly landed prices for the listed month. Landed prices are based on a netback calculation.

Updated:

Dec-2019

U.S. Exports of LNG



Source: S&P Global Bentek.