

OE ENERGY MARKET SNAPSHOT

Midwest Version – January 2014 Data

Office of Enforcement
Federal Energy Regulatory Commission
February 2014

A decorative graphic consisting of several thick, parallel red lines. Two vertical lines intersect with three horizontal lines, creating a cross-like shape. The lines have a slight blur or glow effect.

Natural Gas and Fuels Markets

Midwest Annual Average Day-Ahead Natural Gas Prices

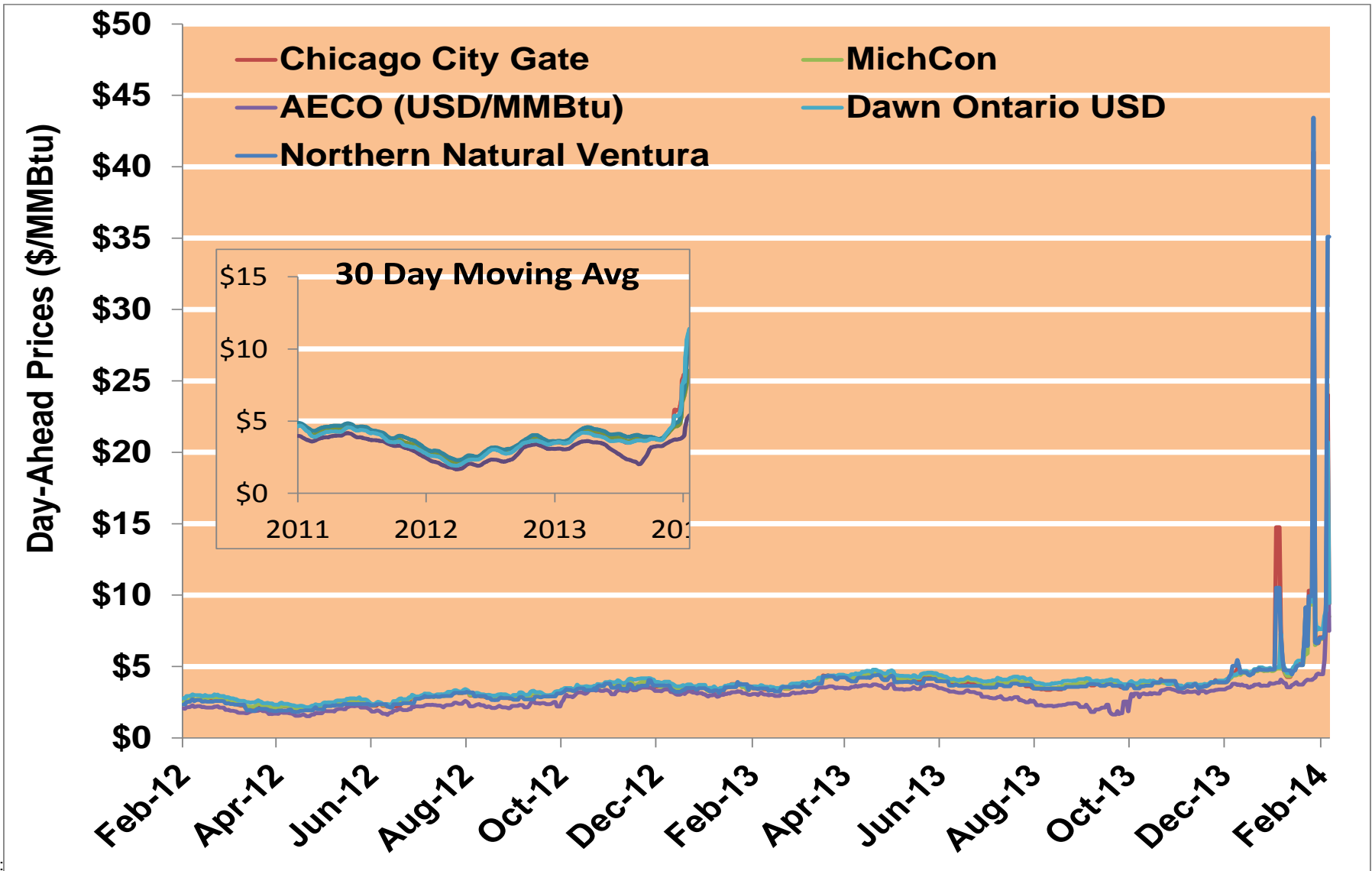
	Average Day Ahead Prices (\$/MMBtu)	Chicago City Gate	MichCon	AECO C Hub Natural Gas/USD	Dawn Ontario USD	NNG/NBP Ventura	Henry Hub
2011	Annual	4.12	4.20	3.66	4.37	4.04	3.98
	Summer	4.24	4.33	3.78	4.44	4.15	4.14
	Winter 2011/2012	2.87	2.94	2.49	3.21	2.78	2.74
2012	Annual	2.85	2.90	2.39	3.07	2.77	2.75
	Summer	2.76	2.80	2.24	2.93	2.68	2.69
	Winter 2012/2013	3.63	3.67	3.22	3.84	3.60	3.47
2013	Annual	3.86	3.92	3.09	4.08	3.81	3.70
	Summer	3.85	3.97	2.94	4.15	3.78	3.75
	Winter 2013/2014	5.53	4.99	3.65	5.20	5.42	4.14
2014 YTD	Annual	7.99	6.57	3.97	6.96	7.65	4.69
	Summer						
	Winter 2014/2015						

Notes:

Source: Derived from ICE data

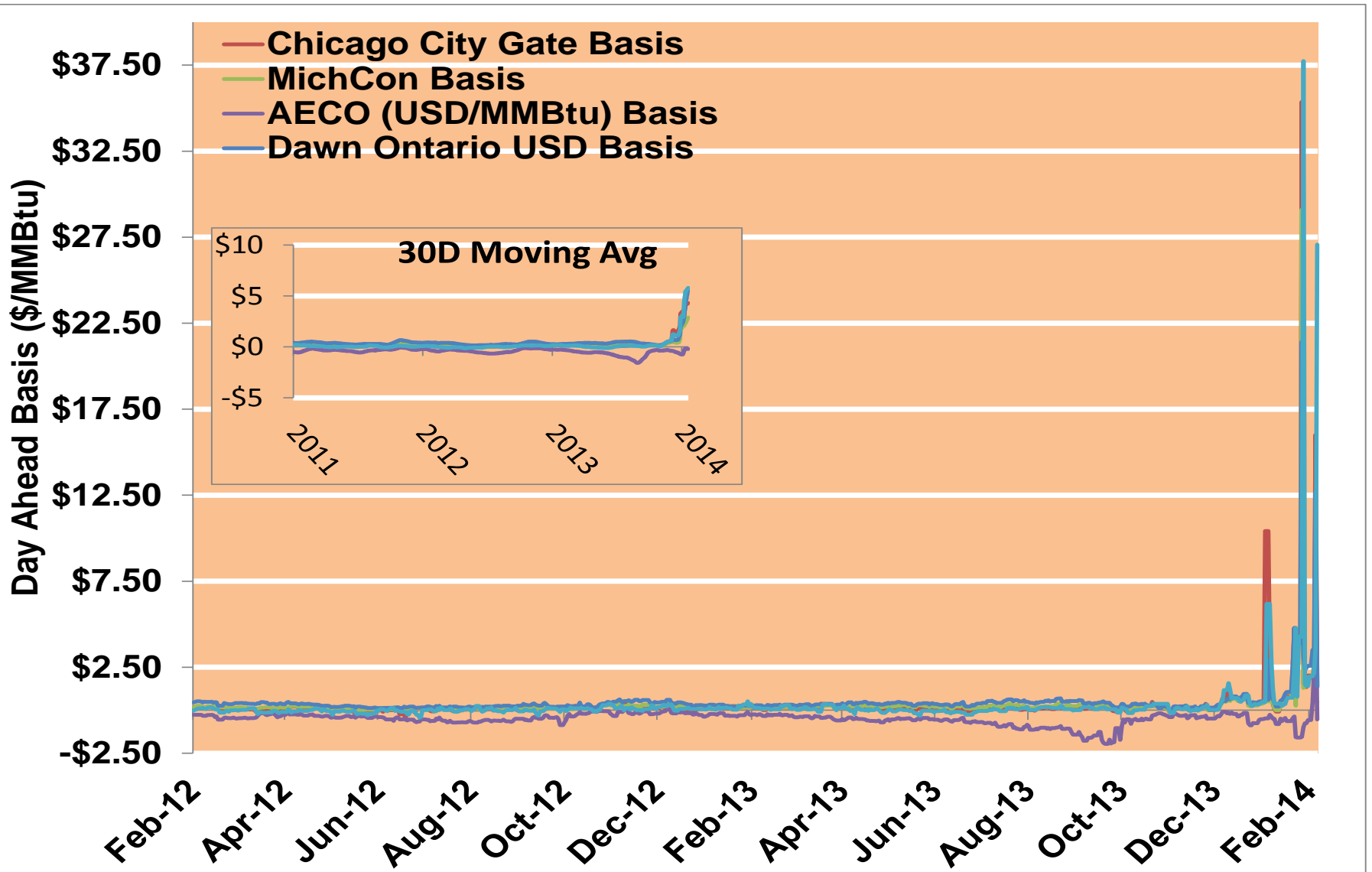
Updated 2/18/2014

Midwest Day-Ahead Prices



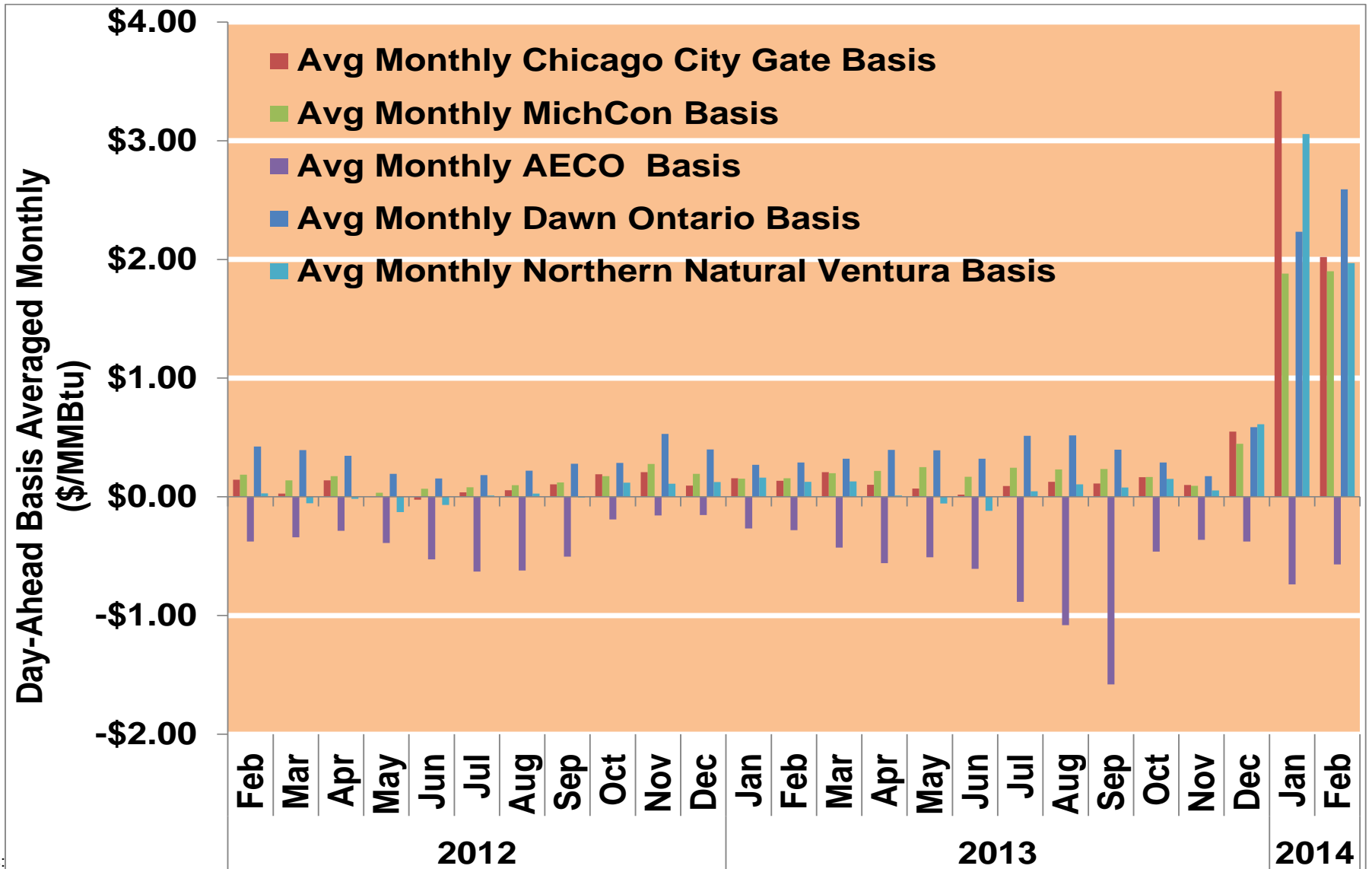
Notes:

Midwest Monthly Average Basis Value To Henry Hub



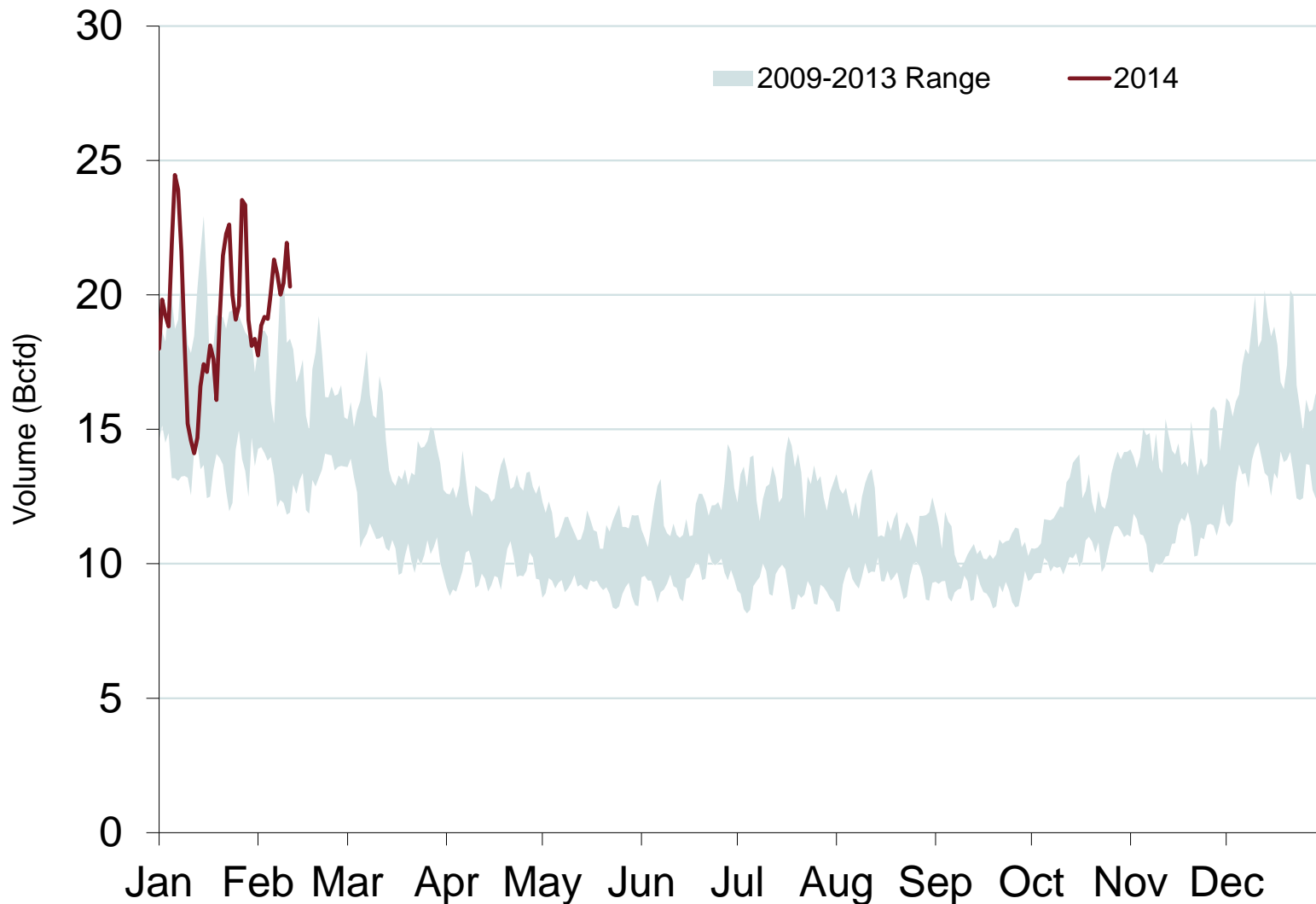
Notes:

Midwest Day-Ahead Basis



Notes:

Daily Midwest Natural Gas Demand All Sectors

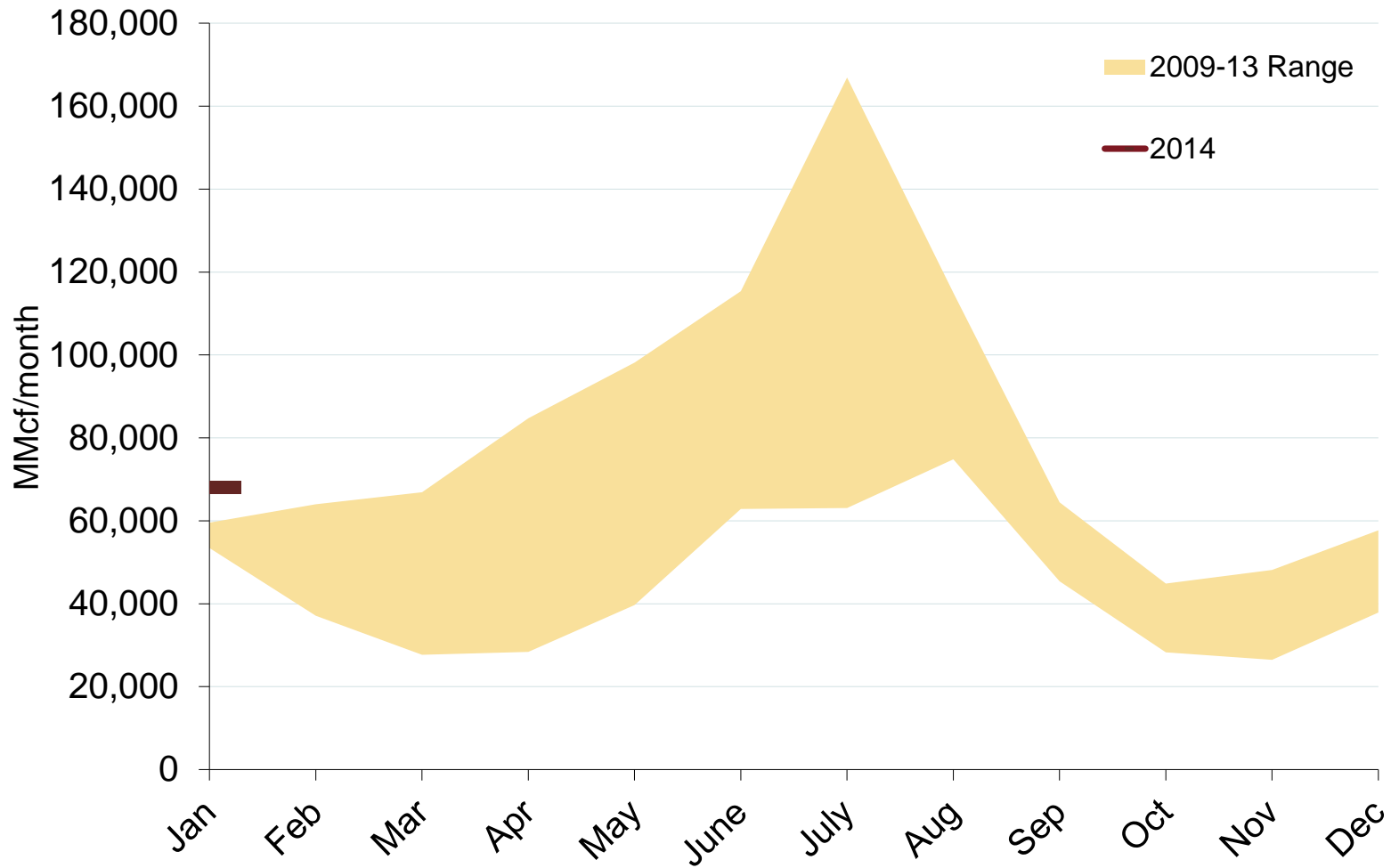


Source: Derived from *Bentek Energy* data

Note: Data derived from interstate natural gas pipeline flows.

Updated: February 2014

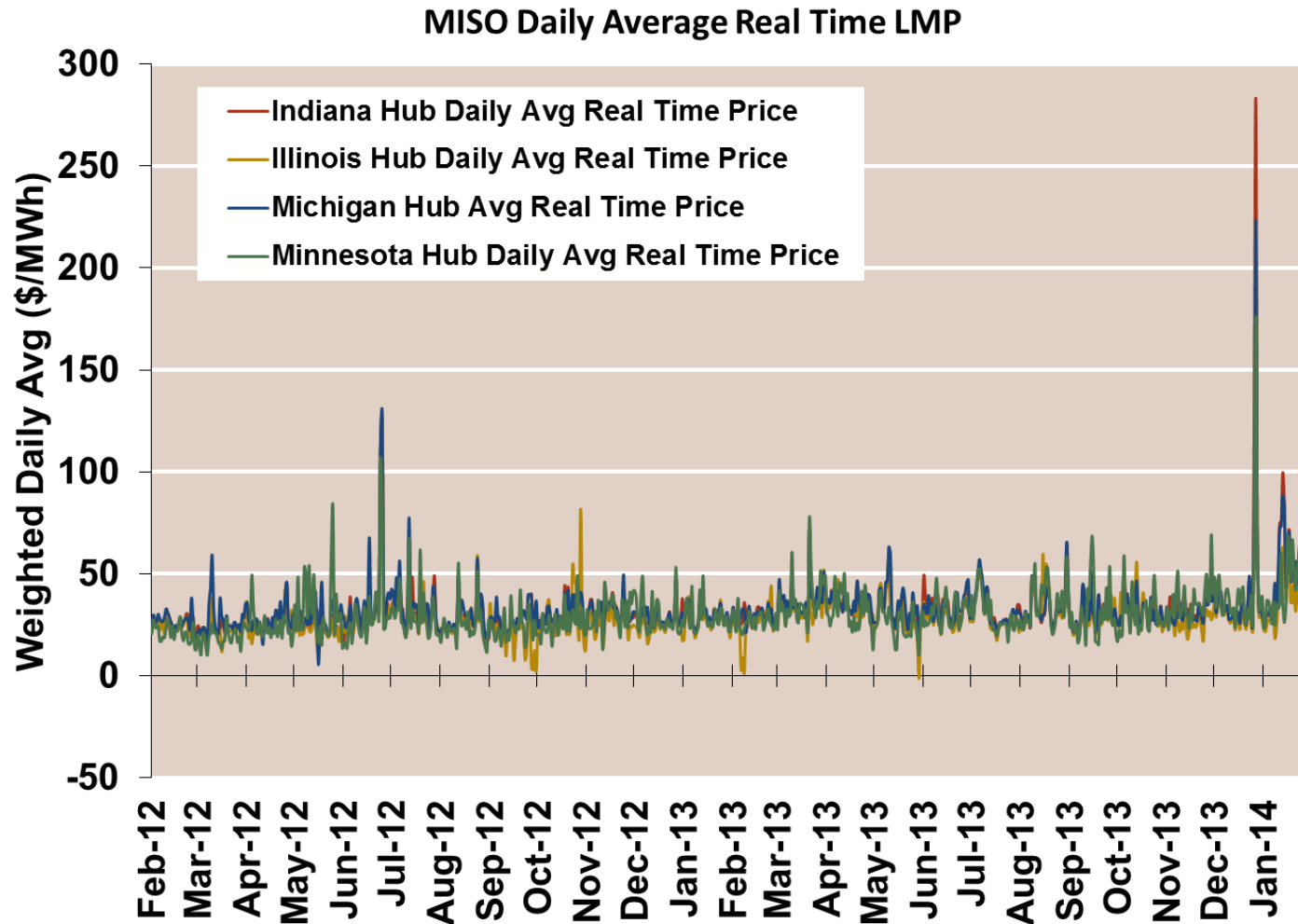
Midwest Natural Gas Consumption for Power Generation



A decorative graphic consisting of several parallel red lines. Two vertical lines intersect with two horizontal lines, forming a cross-like shape. The lines have a slight blur or glow effect.

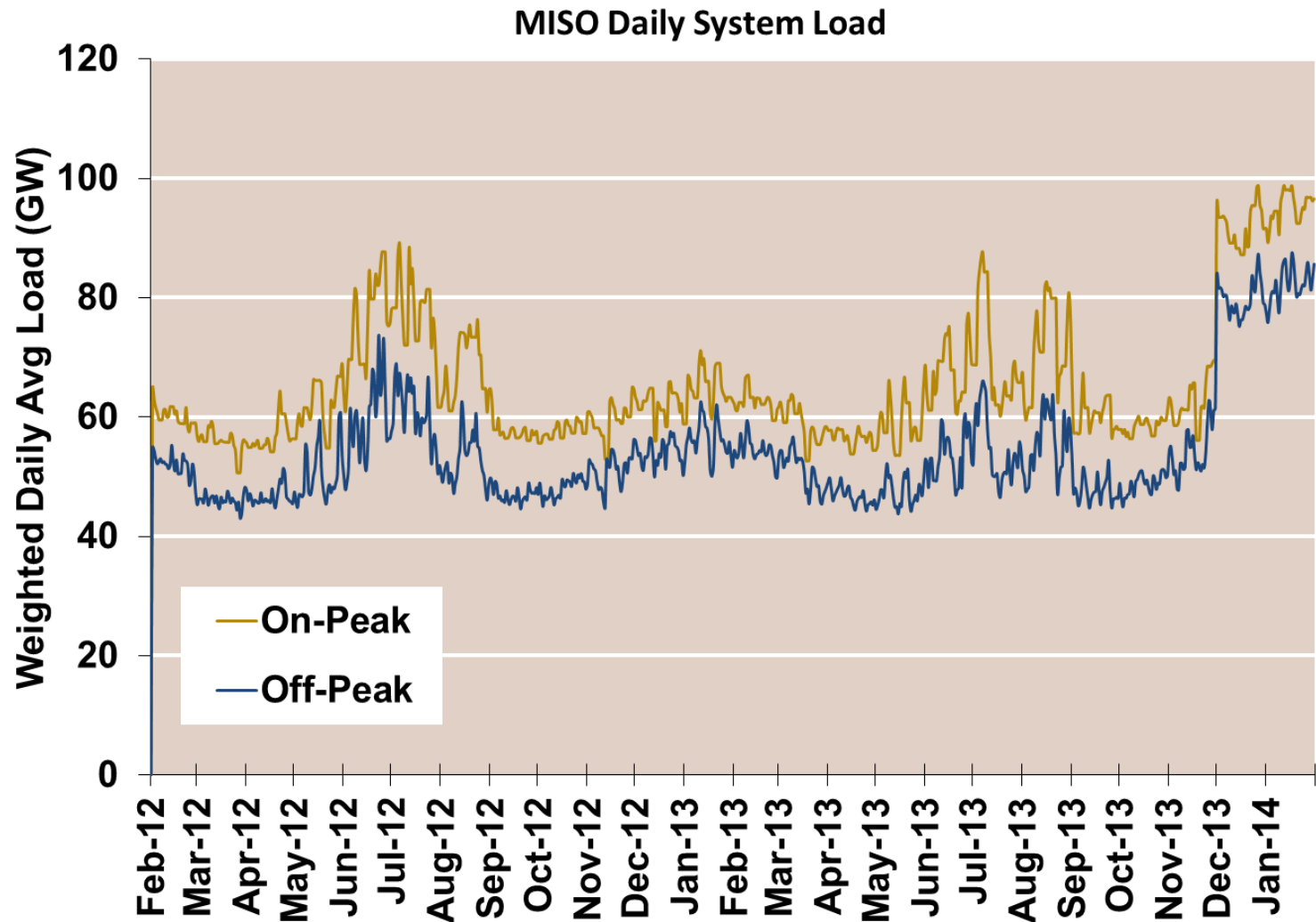
Electricity Markets

MISO Real Time Prices—Two Year History



Source: Genscape via Bloomberg

MISO System Daily Average Load — Two Year History



Source: Genscape via Bloomberg