

OE ENERGY MARKET SNAPSHOT

Central Version – May 2014 Data

Office of Enforcement
Federal Energy Regulatory Commission
June 2014

2014 Summer Assessment

[2014 Summer Assessment](http://www.ferc.gov/market-oversight/reports-analyses/mkt-views/2014/05-15-14.pdf)

<http://www.ferc.gov/market-oversight/reports-analyses/mkt-views/2014/05-15-14.pdf>

Infrastructure Report

[Office of Energy Projects Energy Infrastructure Update](http://www.ferc.gov/legal/staff-reports.asp)

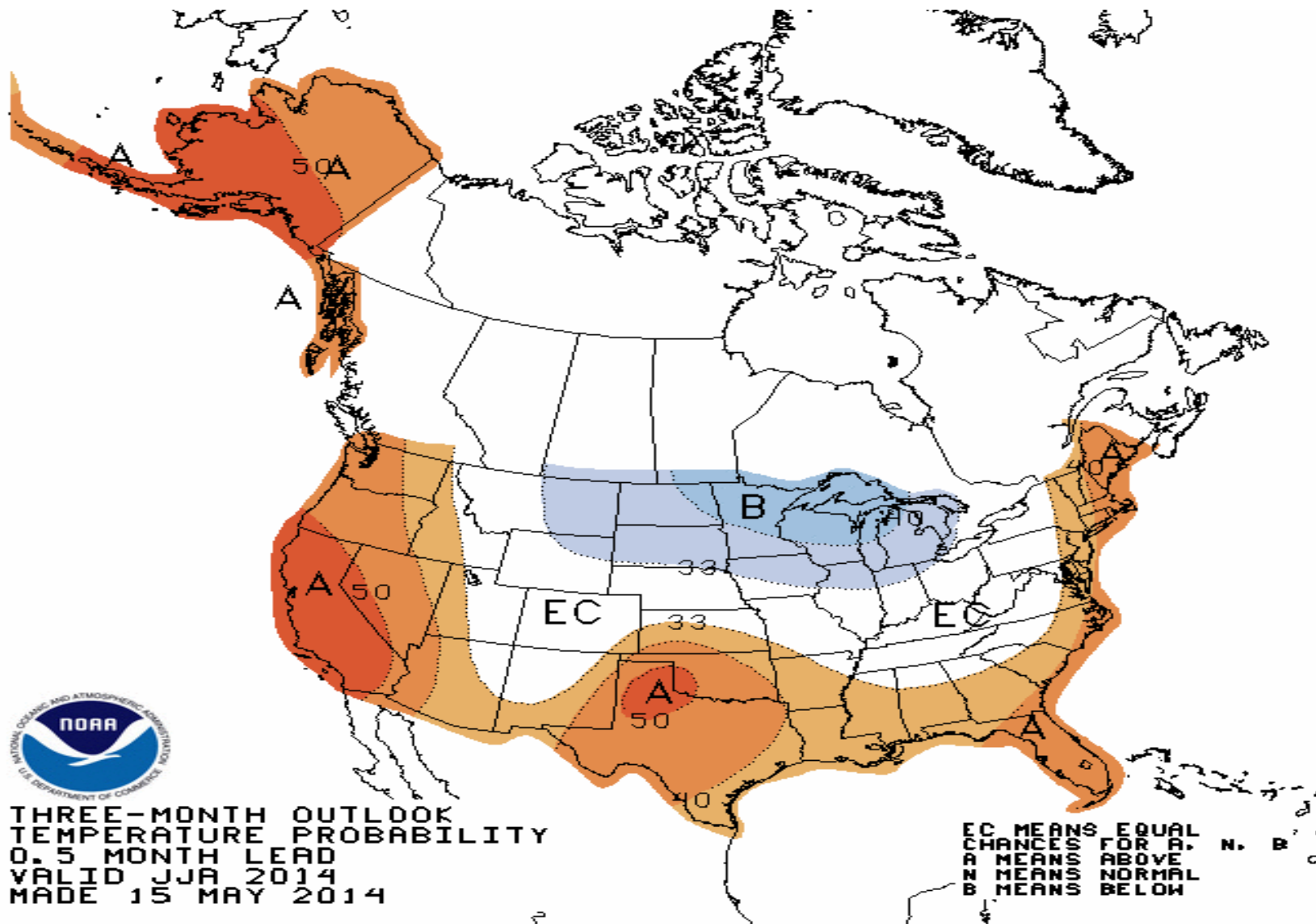
<http://www.ferc.gov/legal/staff-reports.asp>

(see “Energy Infrastructure” tab)



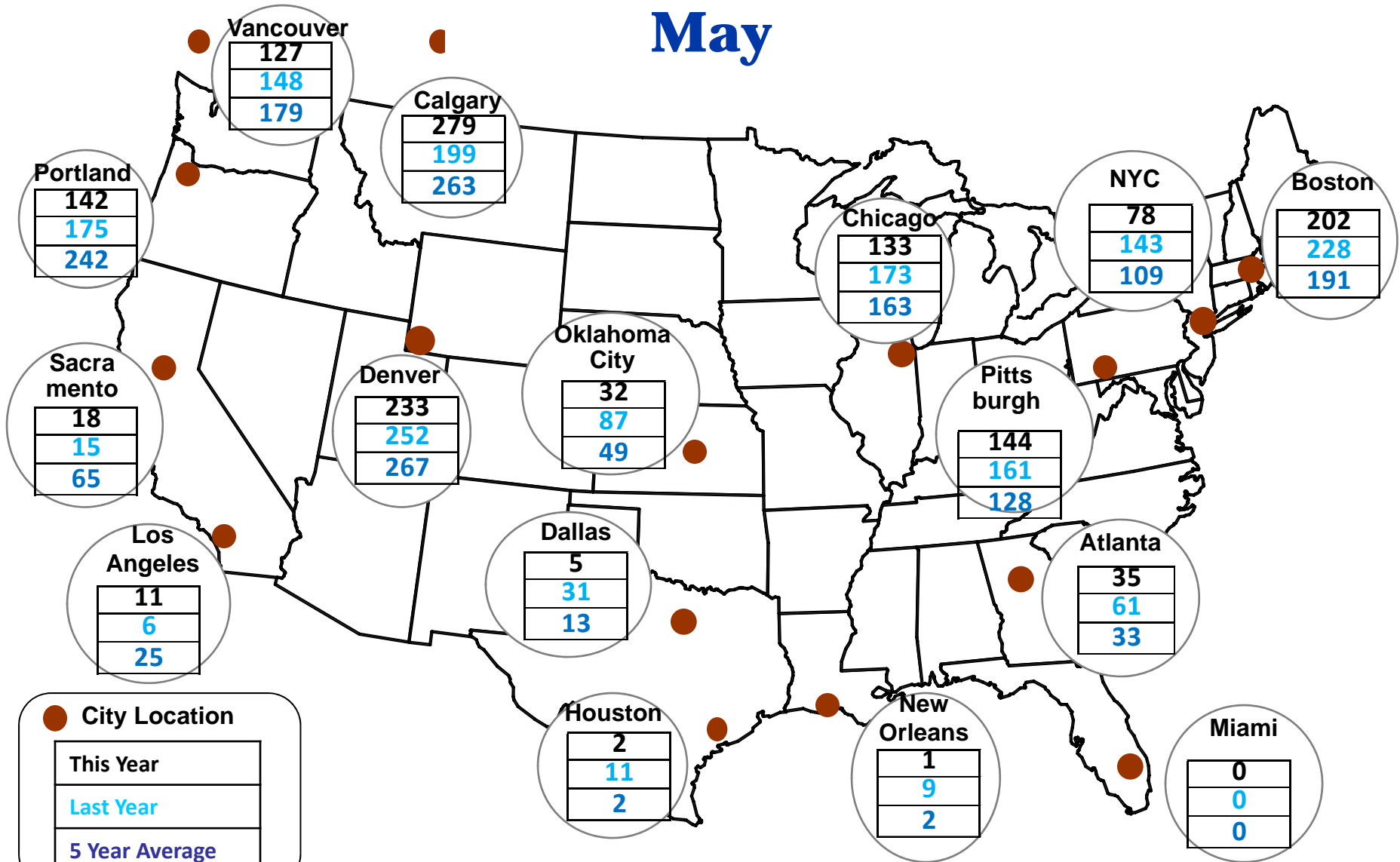
National Slides

NOAA 3 Month Outlook



Cumulative HDDs by City

May

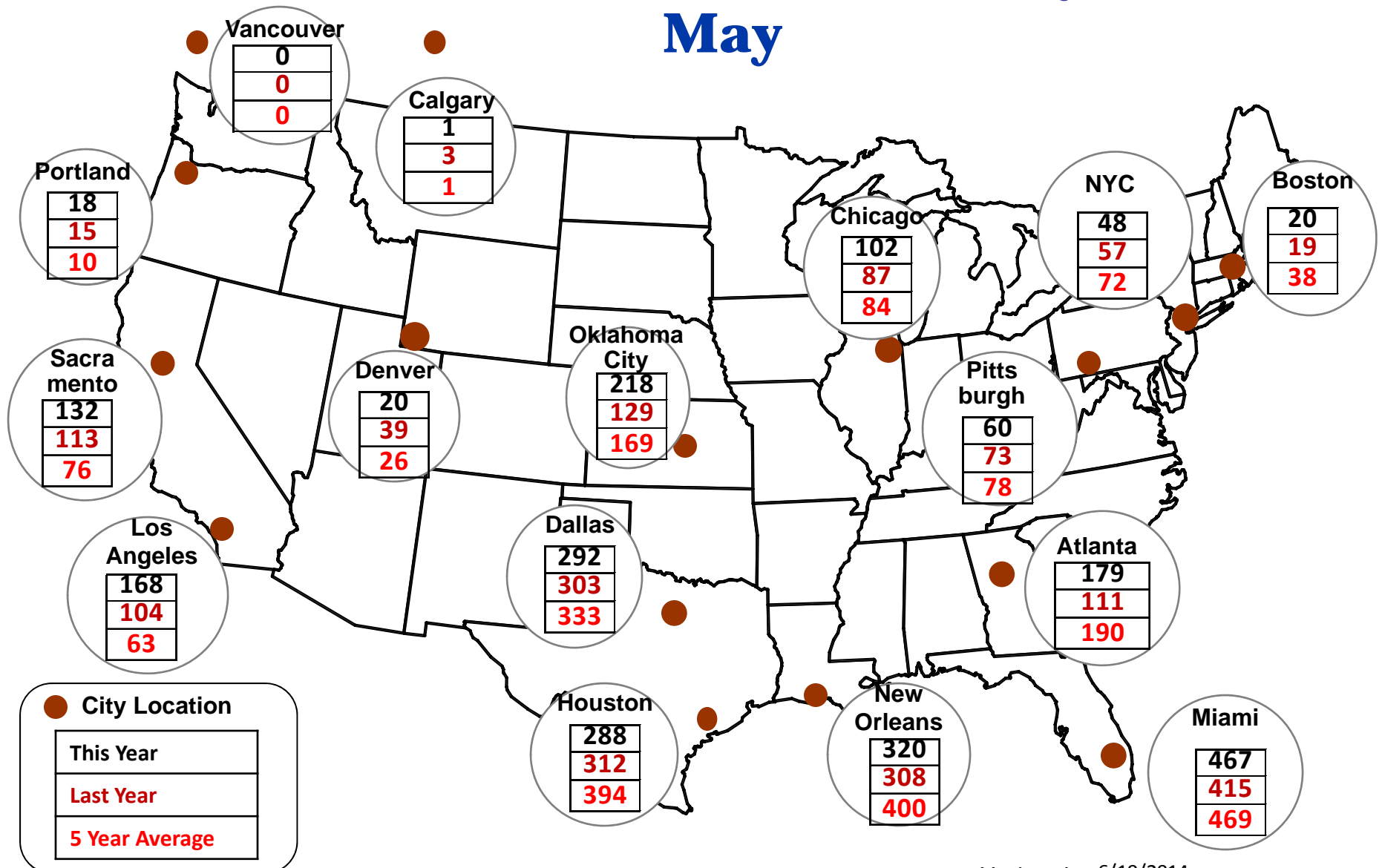


Source: Bloomberg Weather

Updated 6/19/2014

Cumulative CDDs by City

May



Source: Bloomberg Weather

Updated 6/19/2014

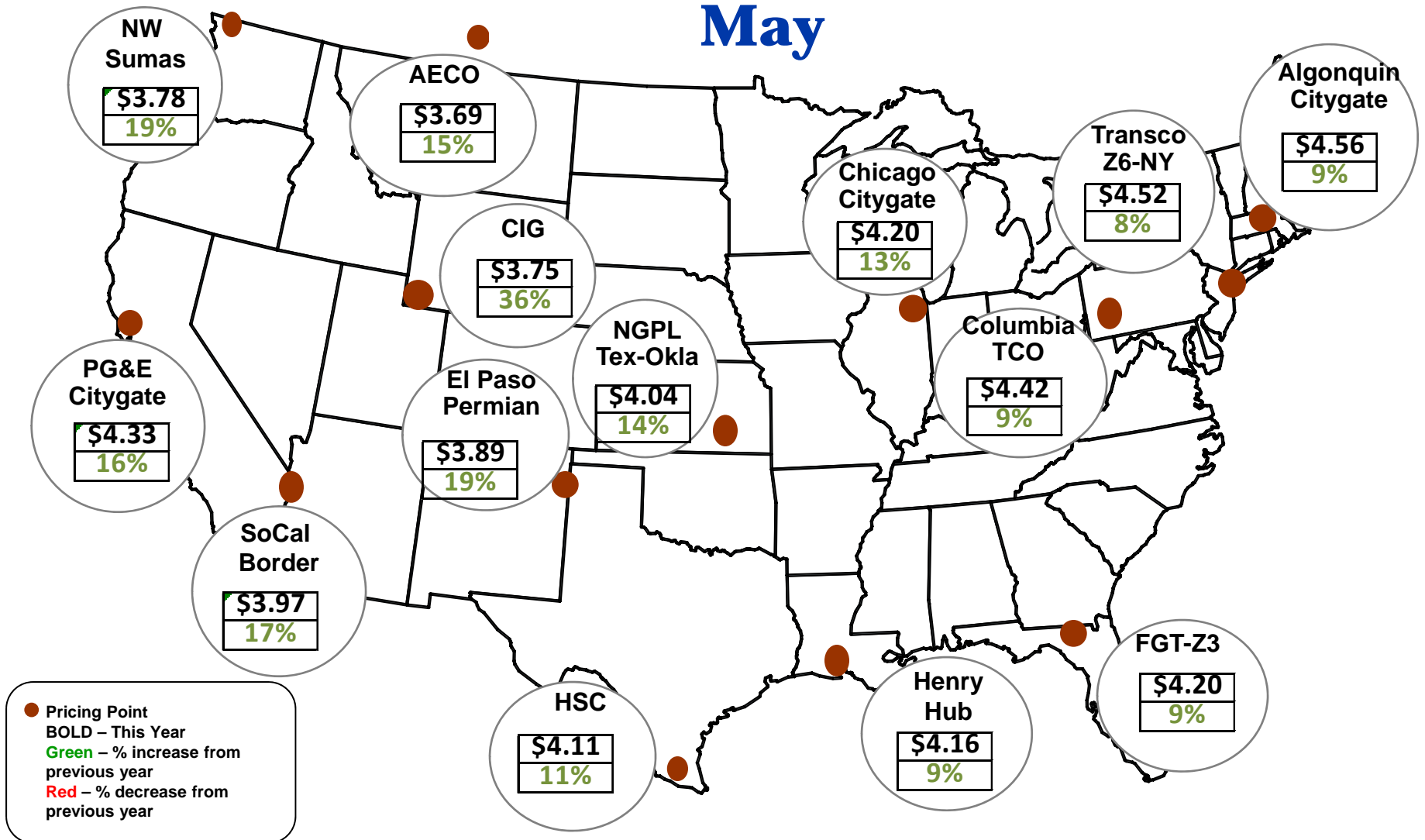
8

Federal Energy Regulatory Commission • Market Oversight • www.ferc.gov/oversight

Spot Natural Gas Prices

Average (\$/MMBtu)

May

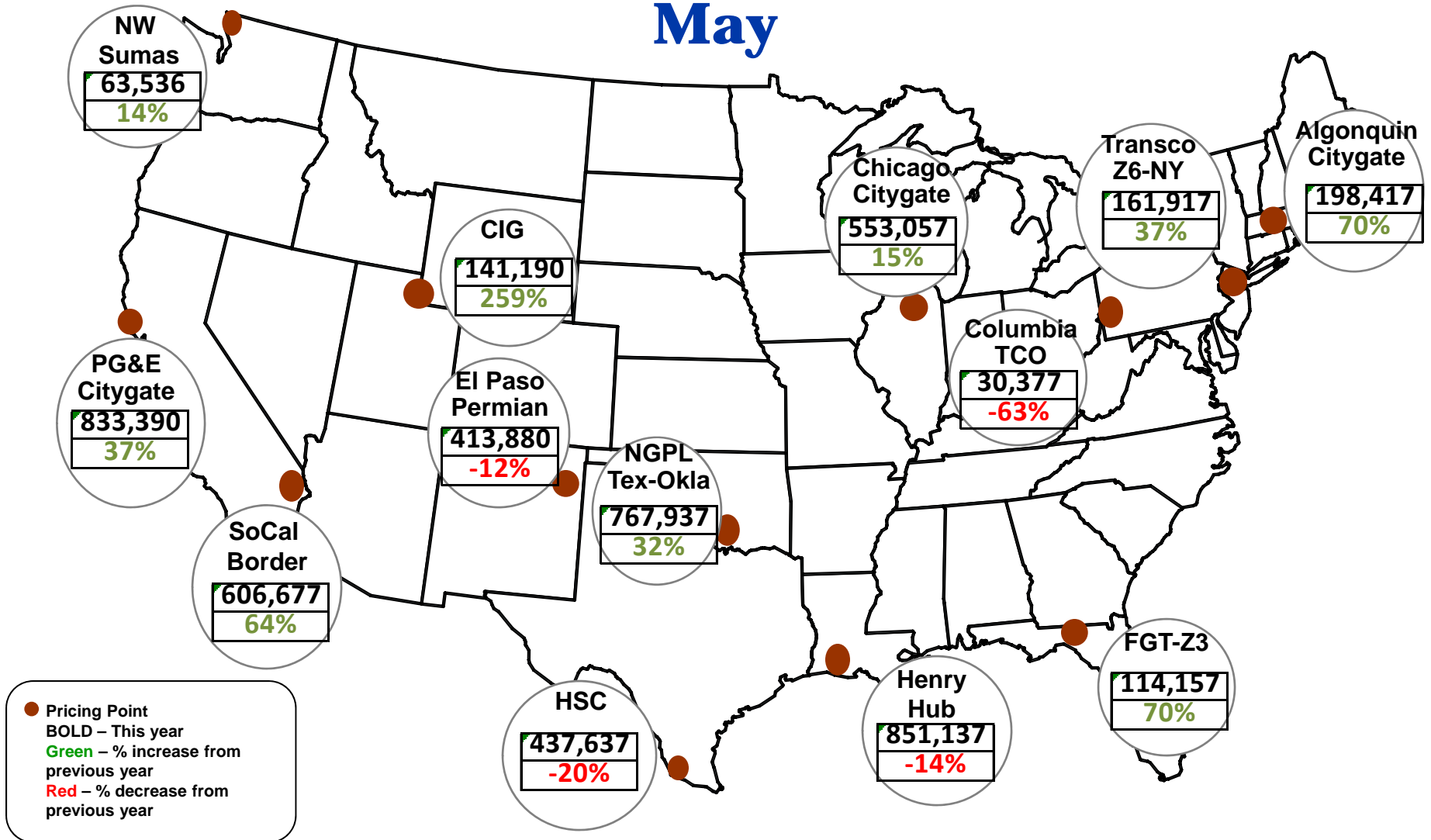


Source: ICE

Updated 6/19/2014

2181

Spot Natural Gas Trading Volumes Average (MMBtus) May



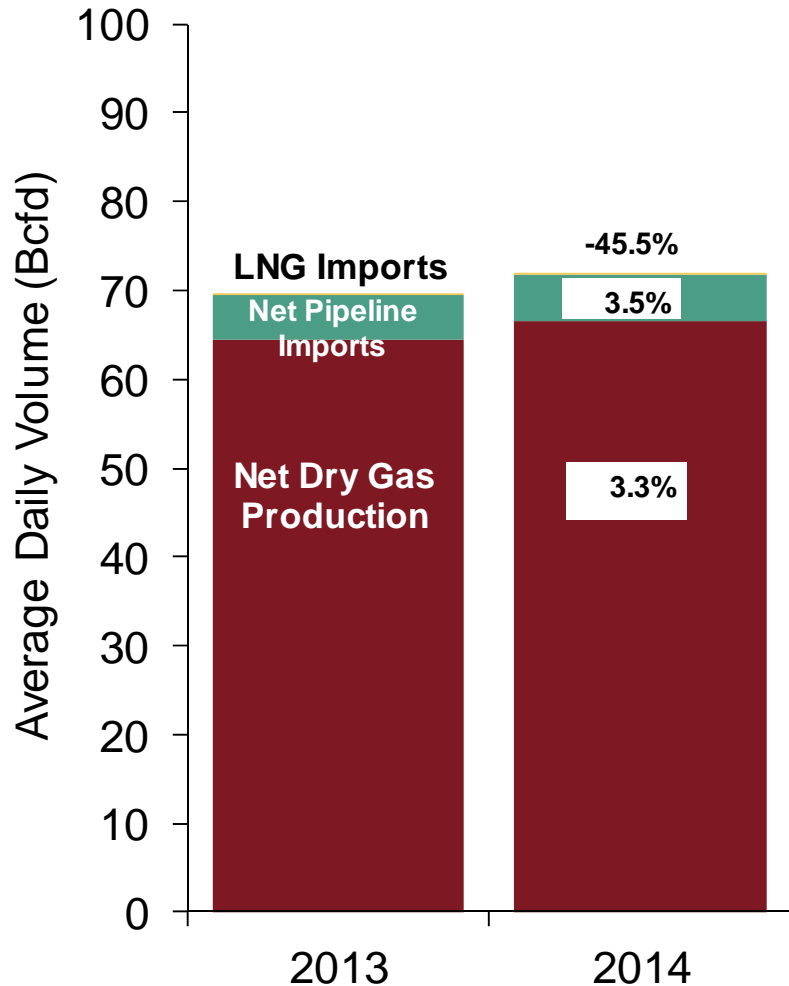
Source: ICE

Updated 6/19/2014

U.S. NG Supply and Demand May 2013 vs. May 2014

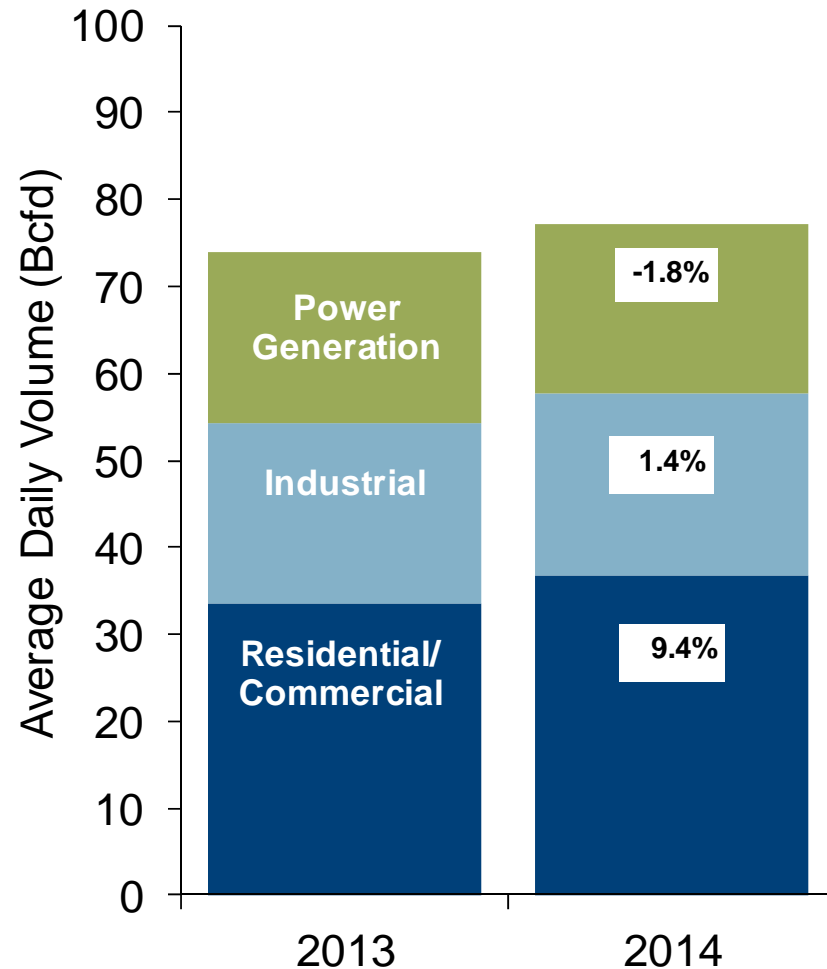
US Natural Gas Supply

Total Change in Supply 3.1%



US Natural Gas Demand

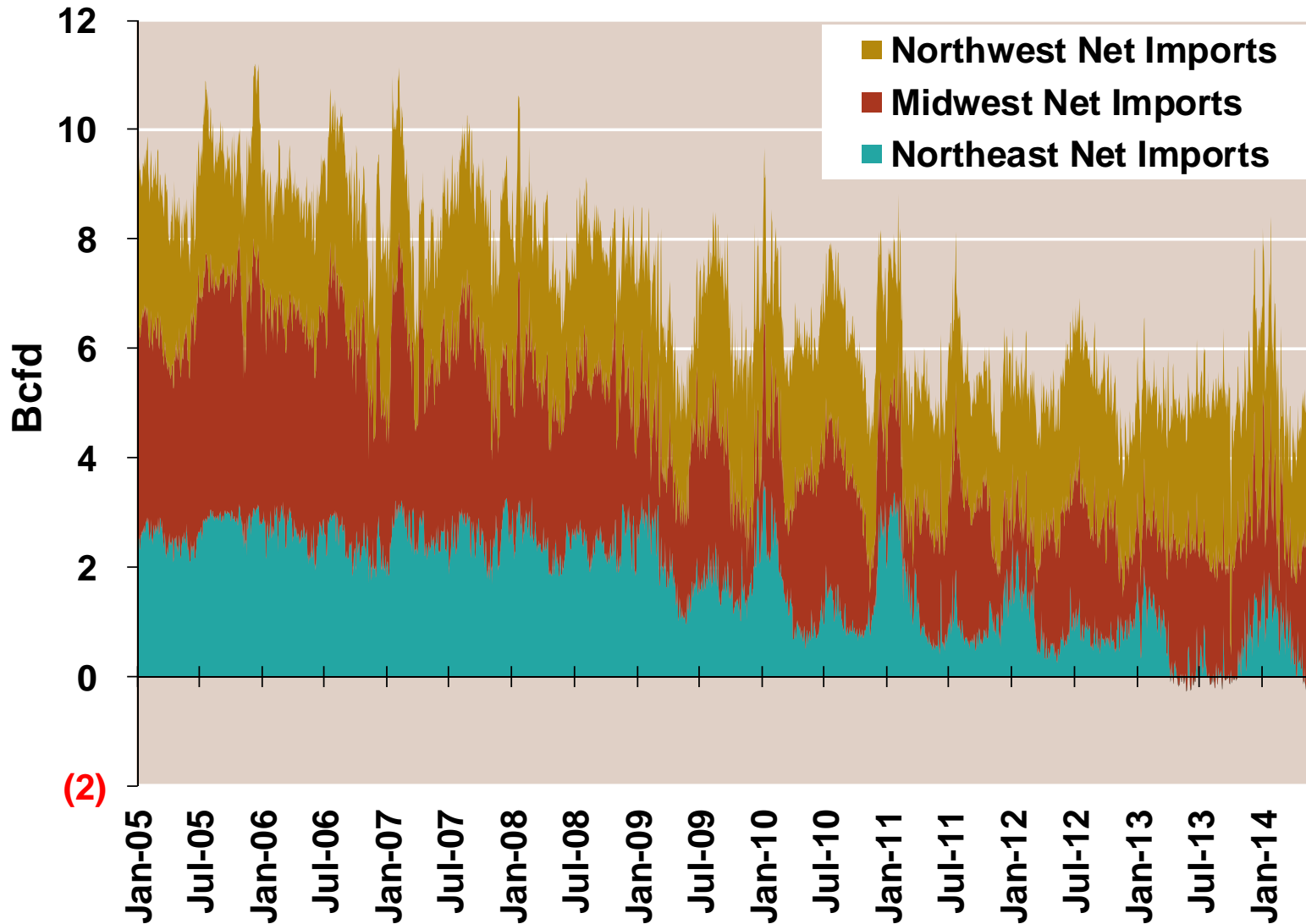
Total Change in Demand 4.1%



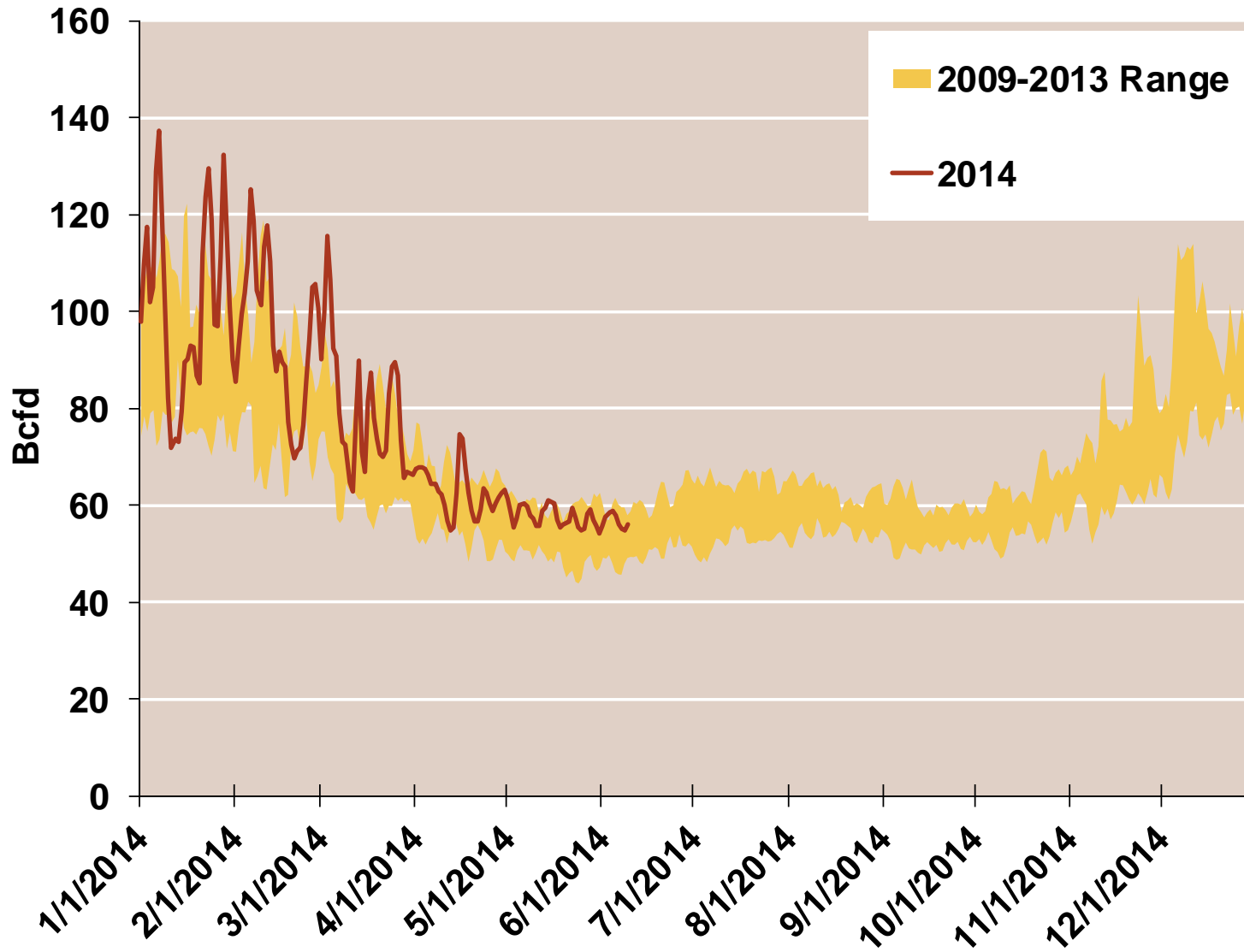
Note: Balance includes all amounts not attributable to other categories.

Source: Derived from *Bentek Energy* data

Regional Imports from Canada



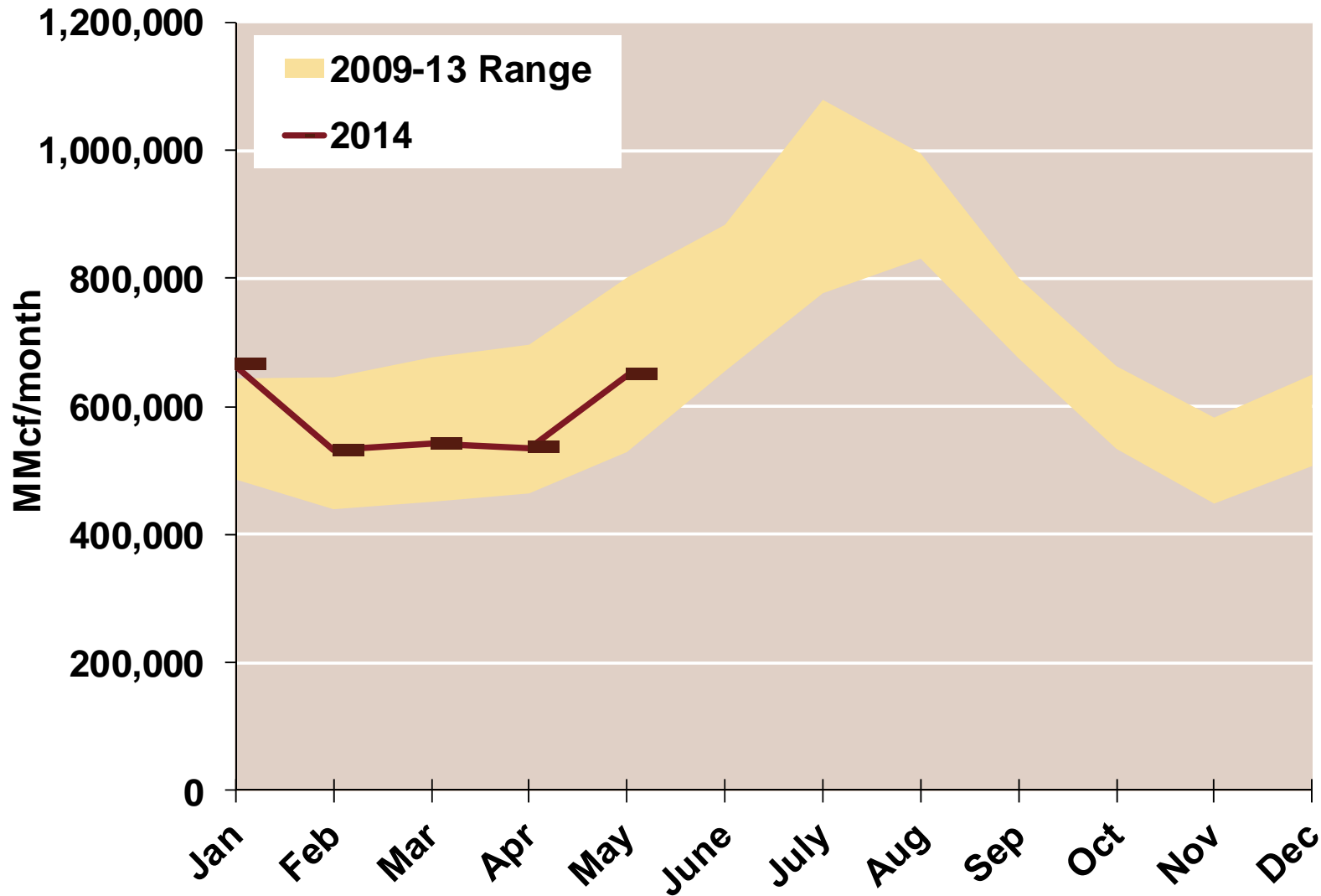
Total U.S. Natural Gas Demand All Sectors



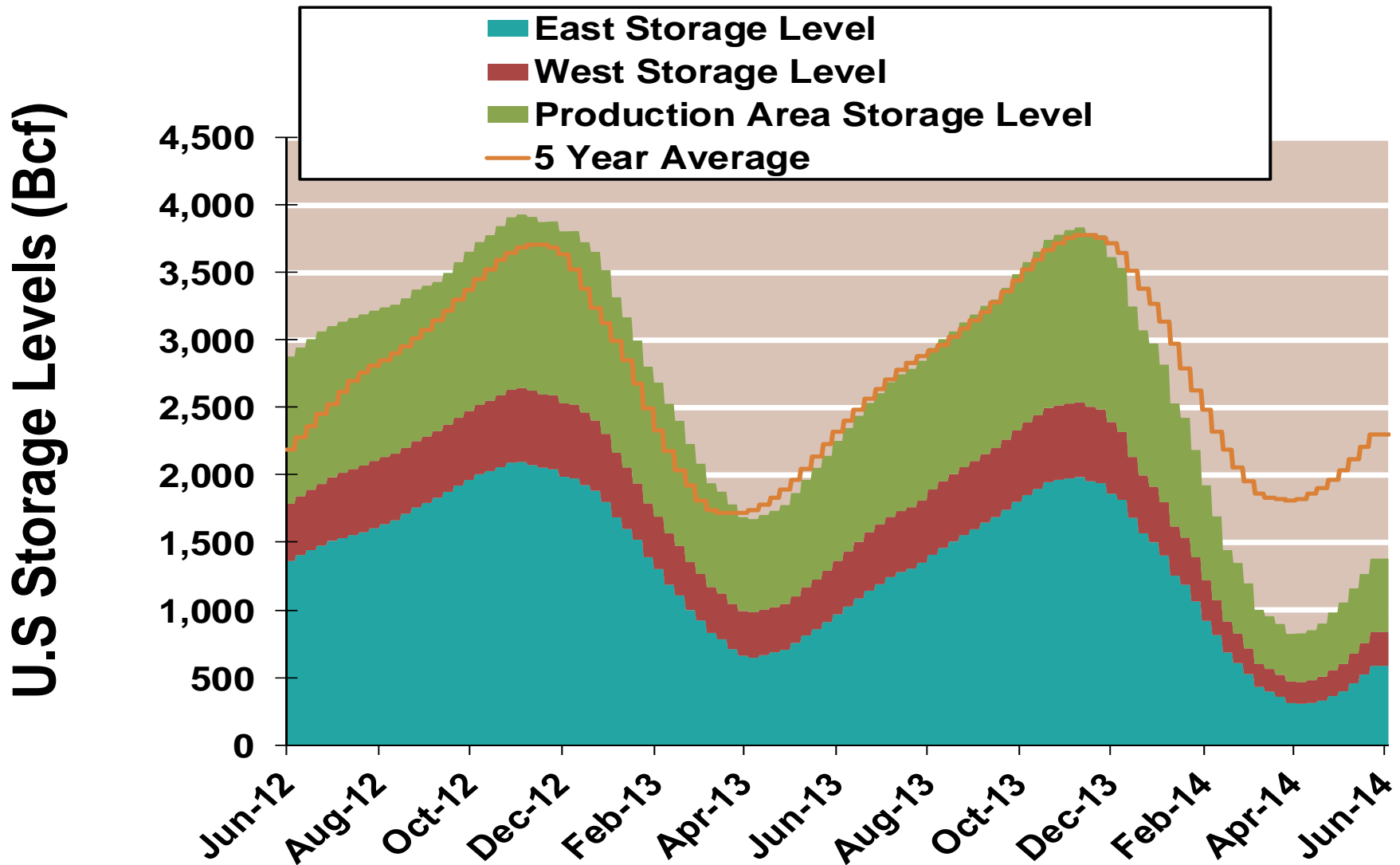
Source: Derived from *Bentek Energy* data, derived from interstate pipeline flow and modeled data.

Updated: June 2014

U.S. Natural Gas Consumption for Power Generation



EIA National Storage Inventories by Region

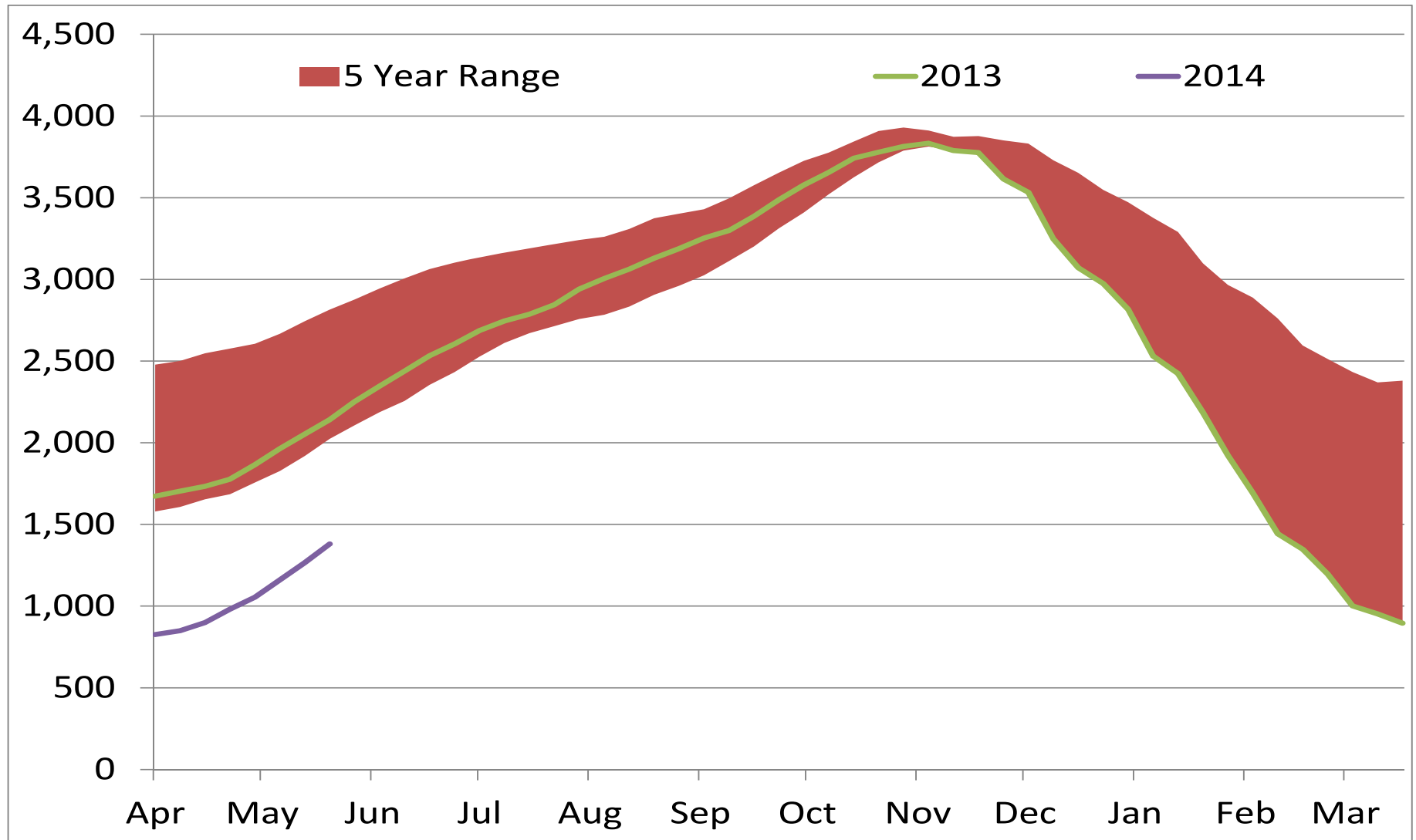


Notes:

Source: Derived from Bloomberg Data

Updated 6/4/2014

EIA National Storage Inventories

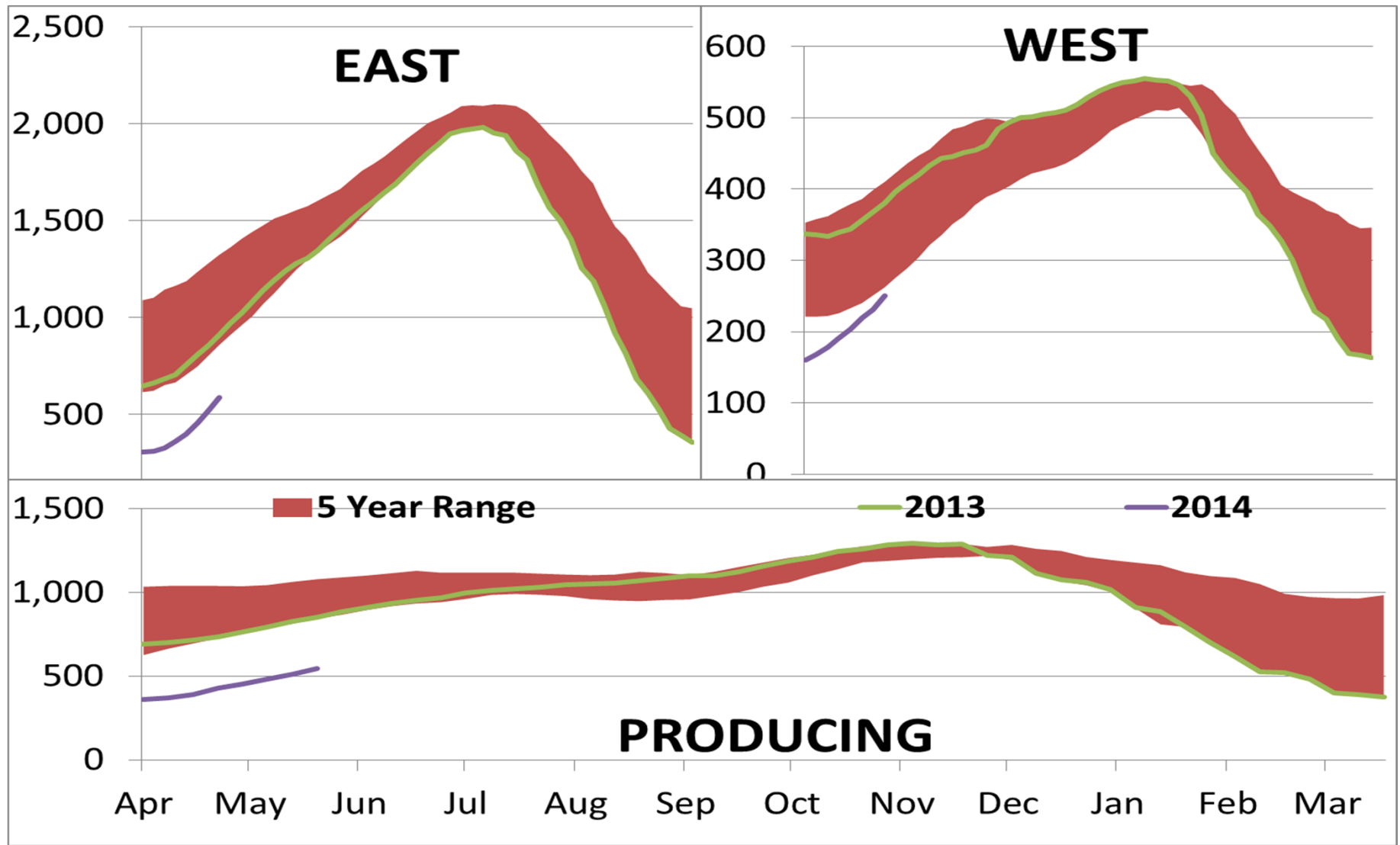


Notes:

Source: Derived from Bloomberg Data

Update: 6/4/2014

EIA Regional Storage Inventories

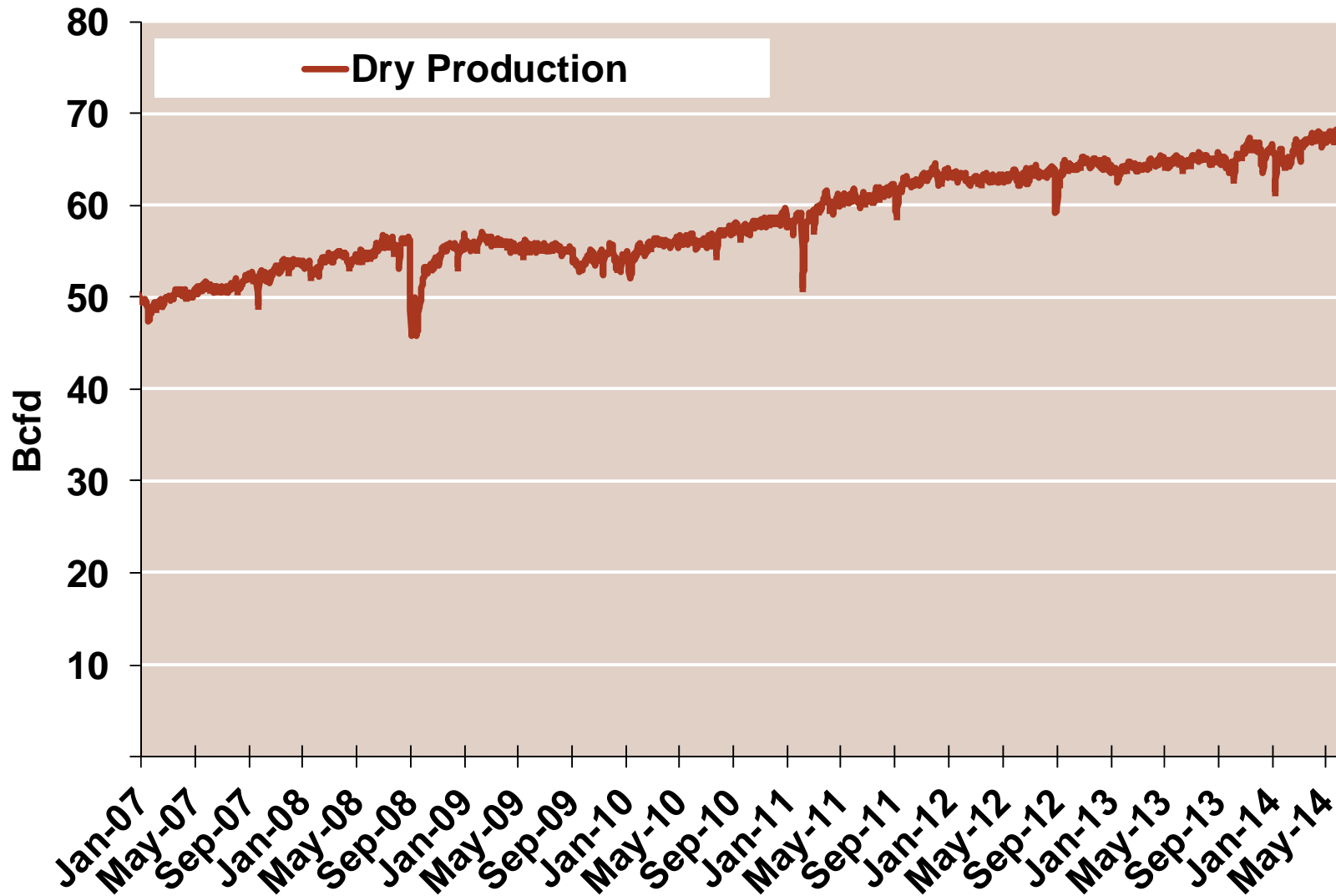


Notes:

Source: Derived from Bloomberg Data

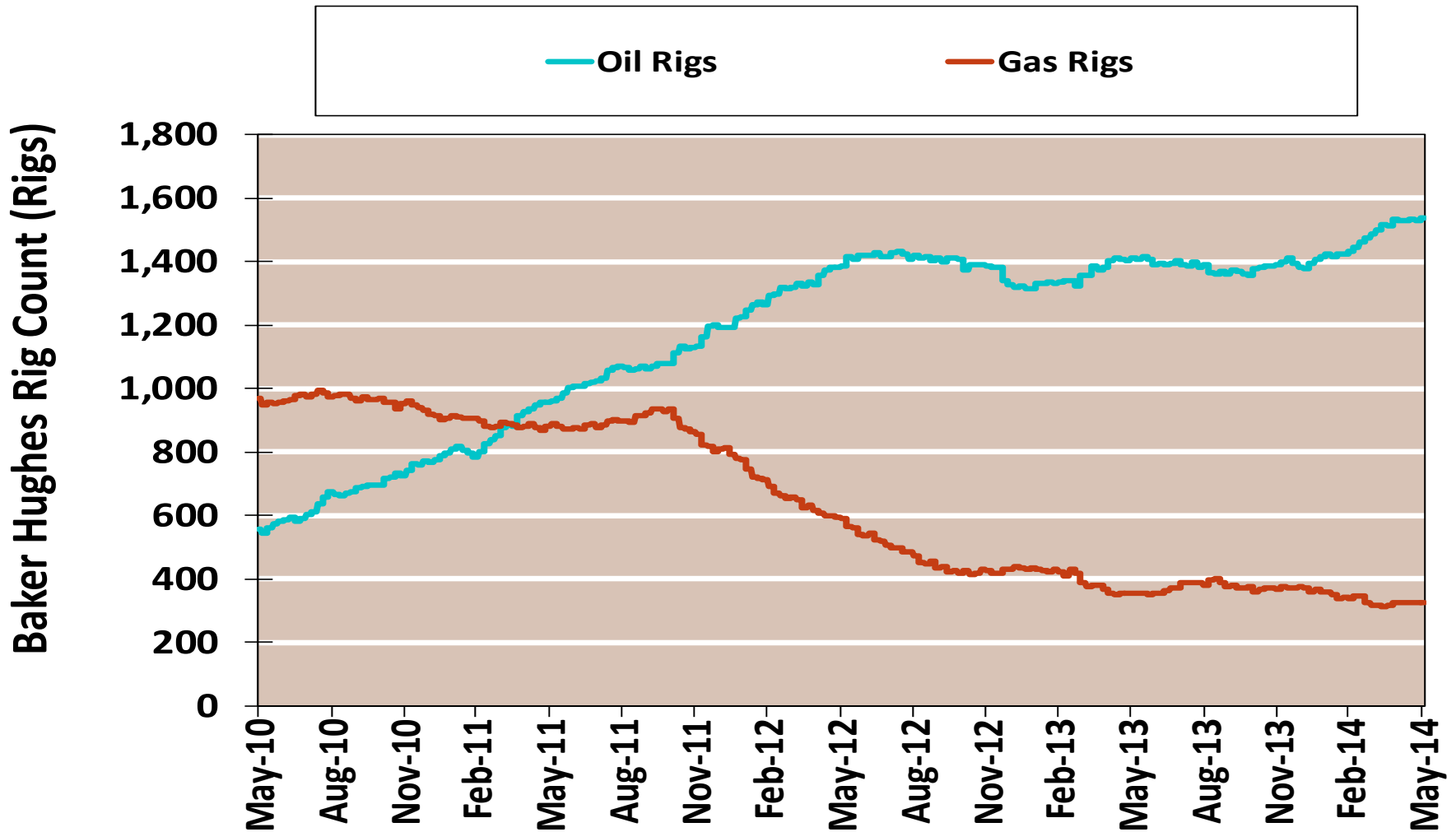
Update: 6/4/2014

Monthly U.S. Dry Gas Production – Lower 48 States



Note: Prior to July 2010, chart was derived from a combination of EIA and Bentek Energy data
Source: Derived from Bentek Energy data

NG Rigs by Type



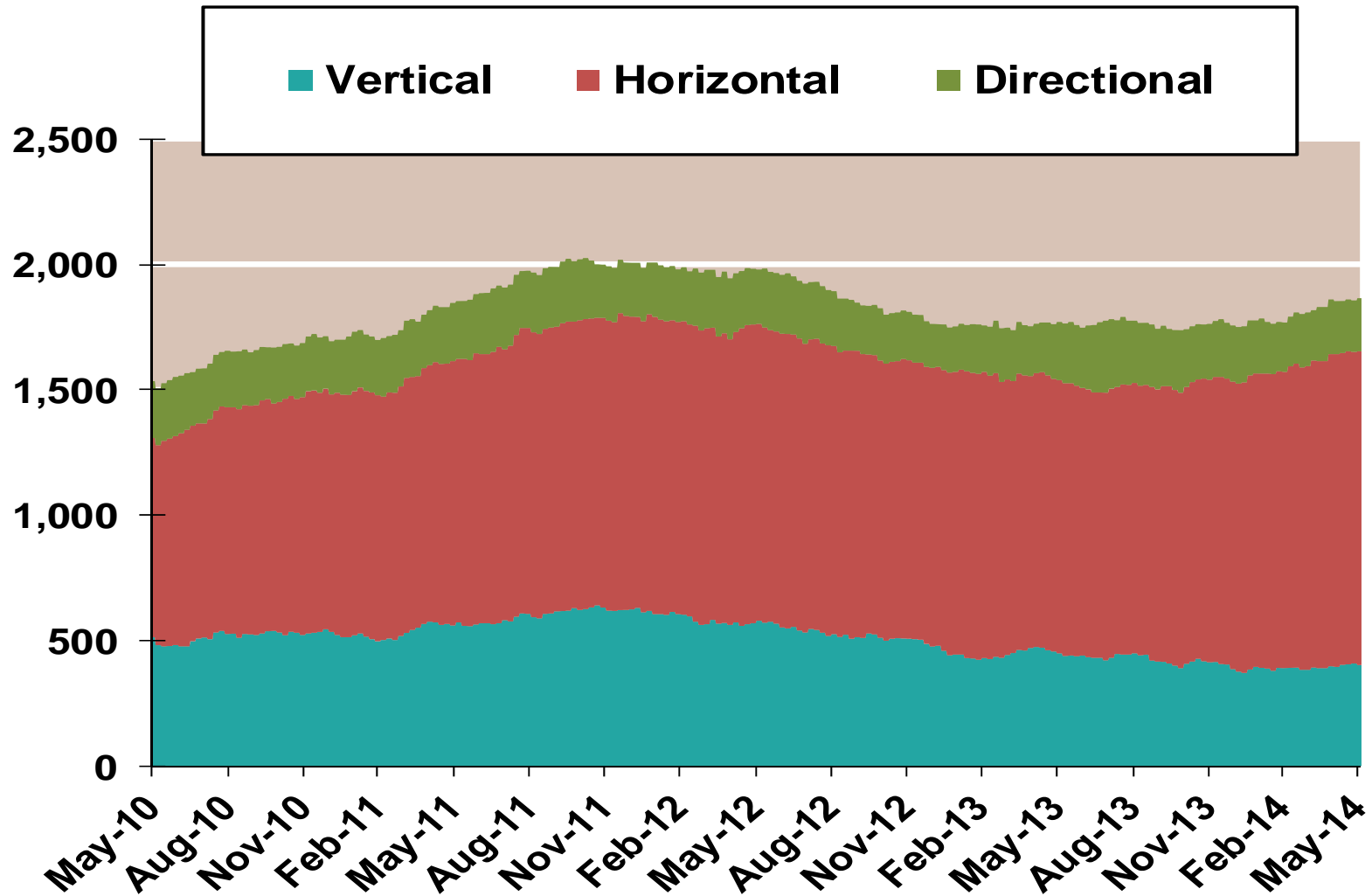
Notes:

Source: Derived from Bloomberg data

Updated 6/4/2014

NG Rig by Direction

Baker Hughes Rigs By Drill Type

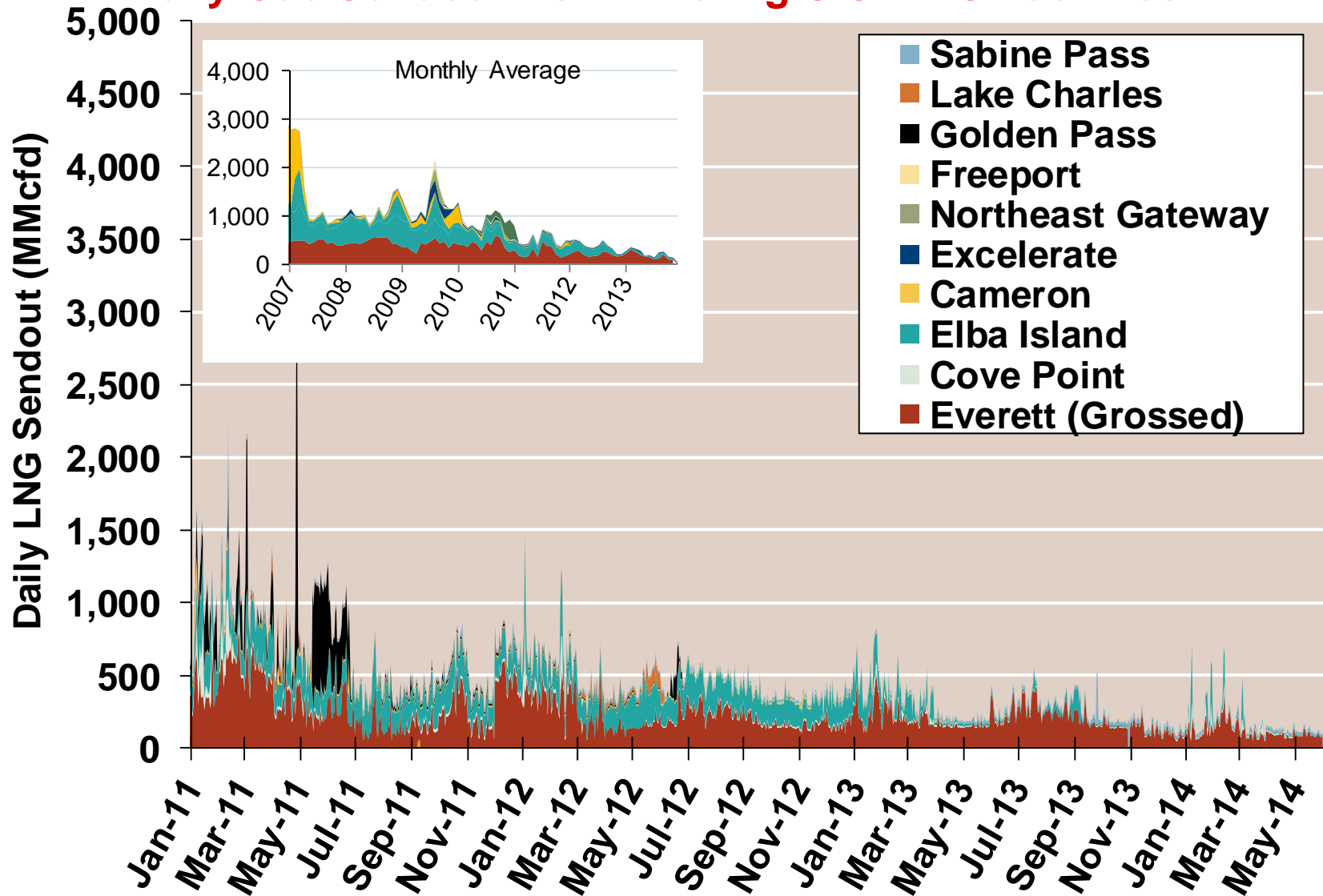


Notes:

Source: Derived from Bloomberg data

Updated 6/4/2014

Daily Gas Sendout from Existing U.S. LNG Facilities



Notes: Everett data includes flows onto the AGT and TGP interstate lines, plus estimates of flows to the Mystic 7 power plant, Keyspan Boston Gas, and LNG trucked out of the terminal. Excludes flows to the Freeport LNG which flows via intrastate pipelines and flows to the Mystic 8 and 9 power plants.

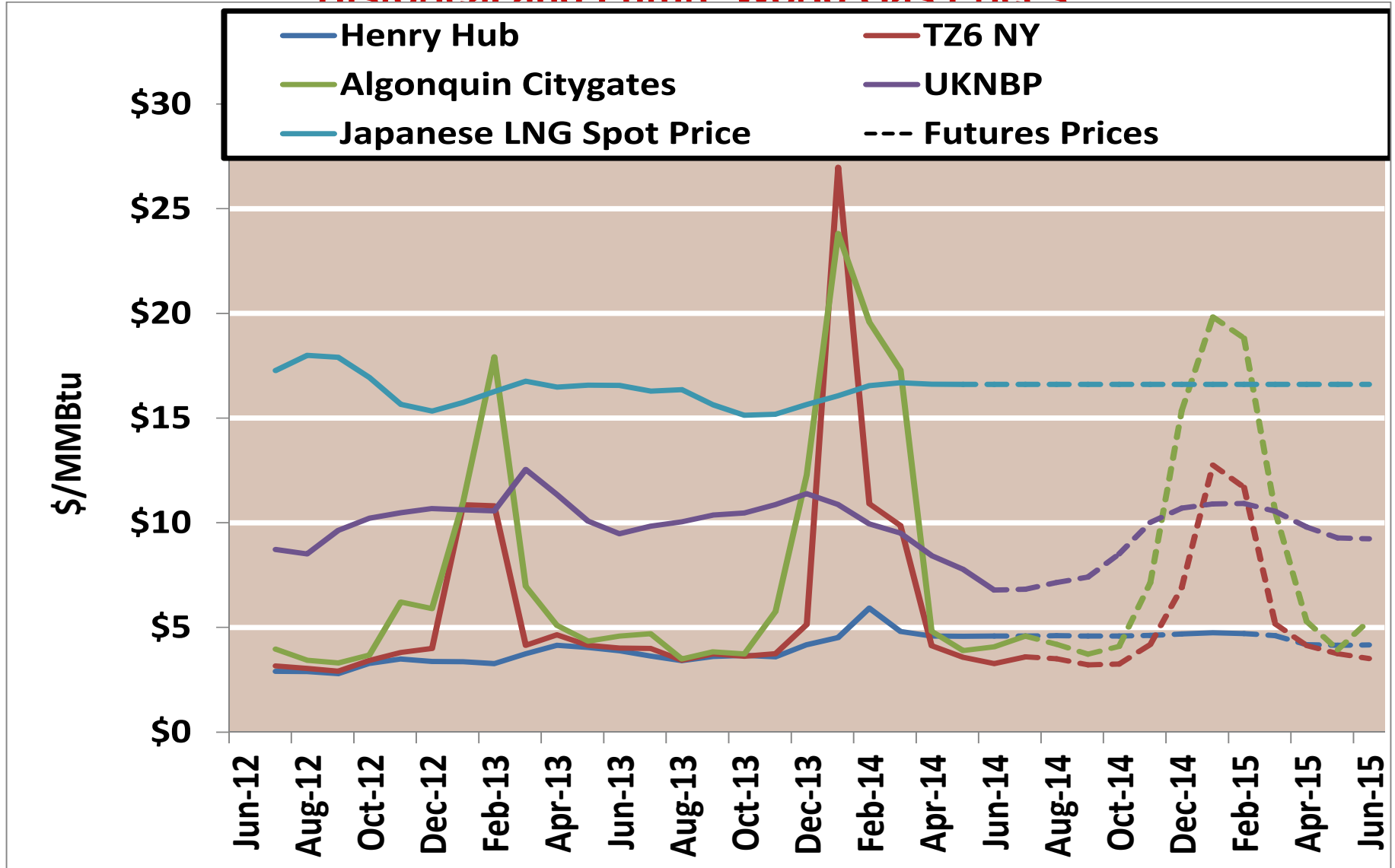
Source: Derived from *Bentek Energy* data

Updated: June 2014

World LNG Estimated July 2014 Landed Prices



Historical and Future World Gas Prices

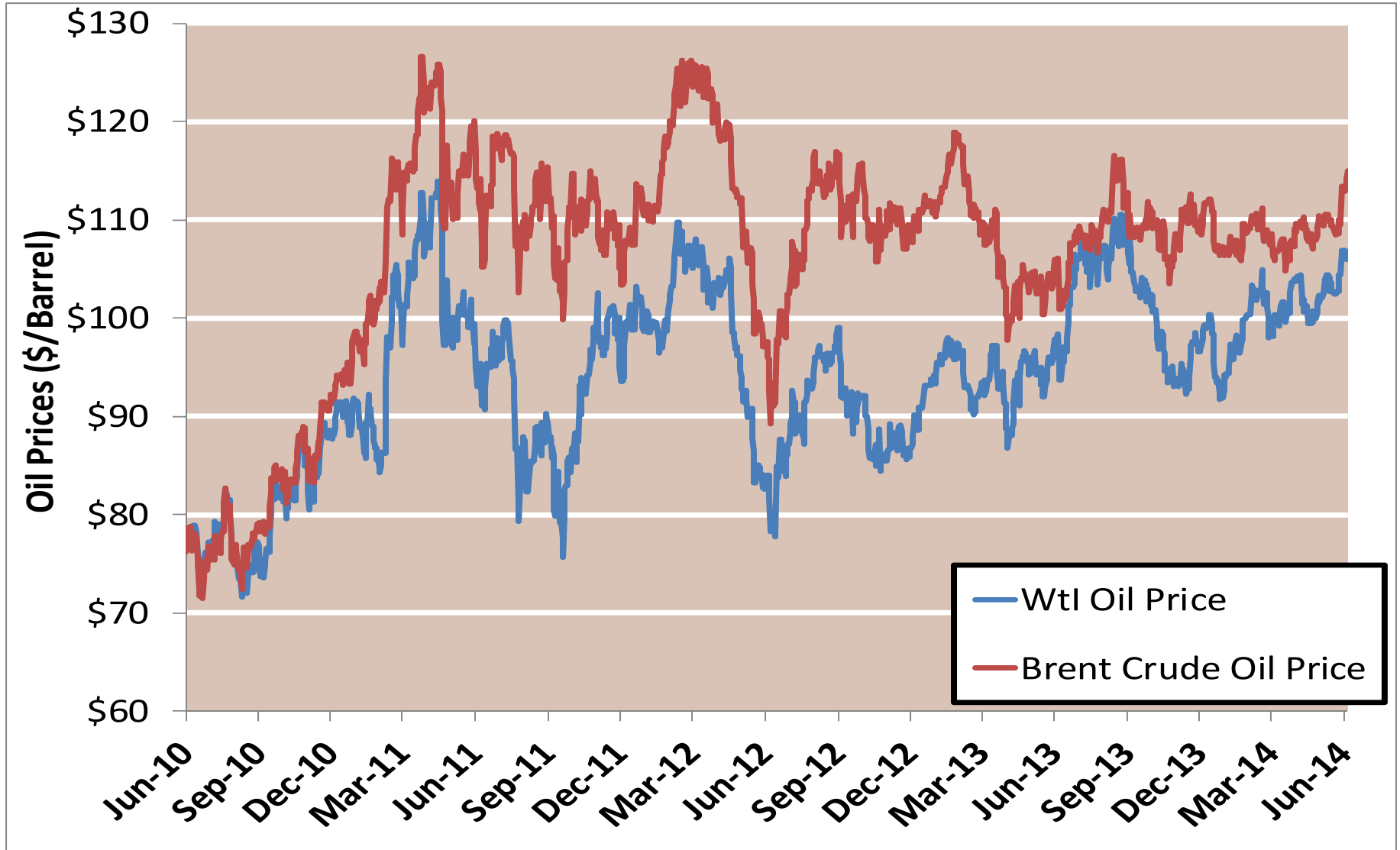


Notes:

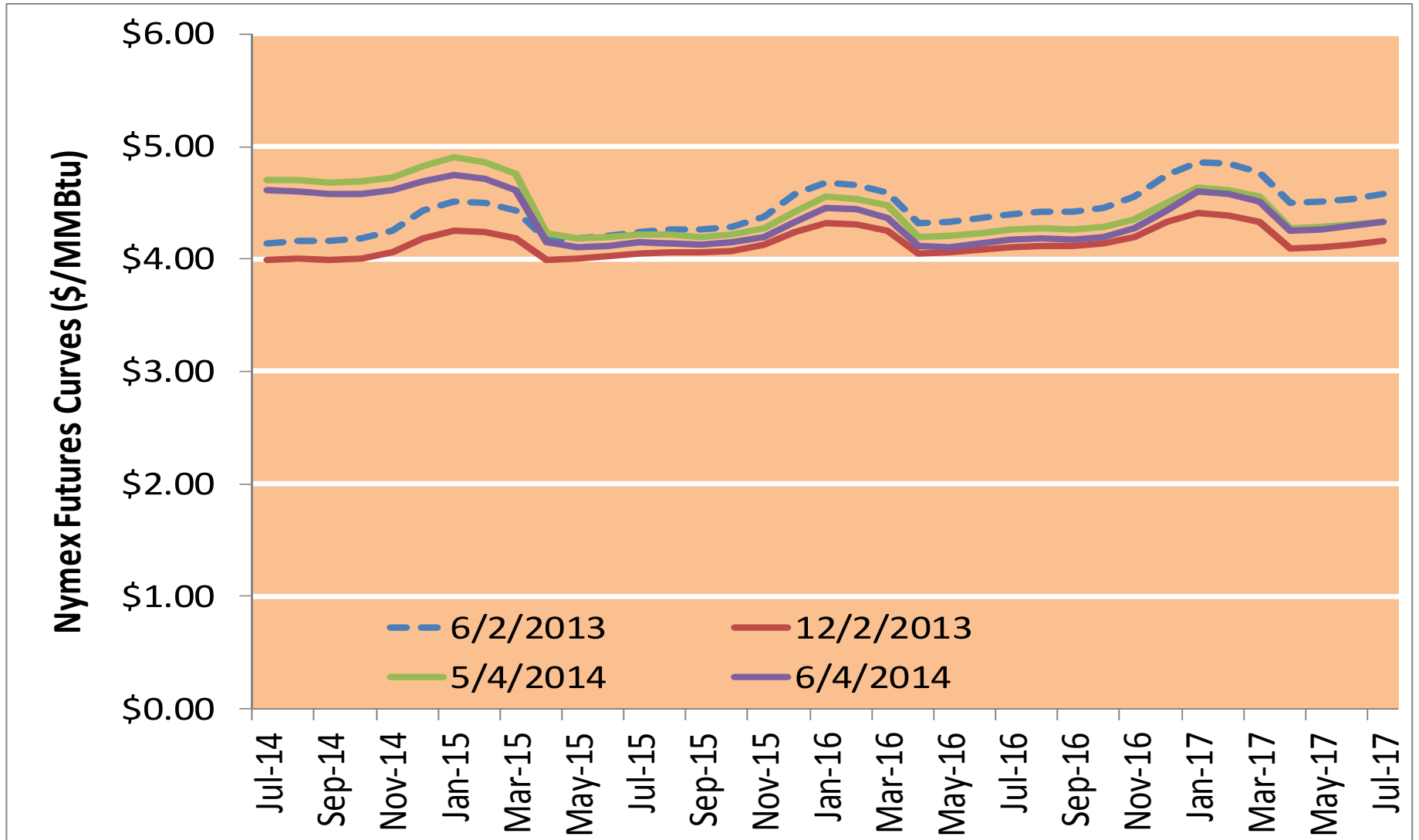
Source: Derived from Bloomberg data

Updated 6/4/2014

WTI vs Brent Crude Oil Price



Nymex Futures Curves



US Total Generation Mix

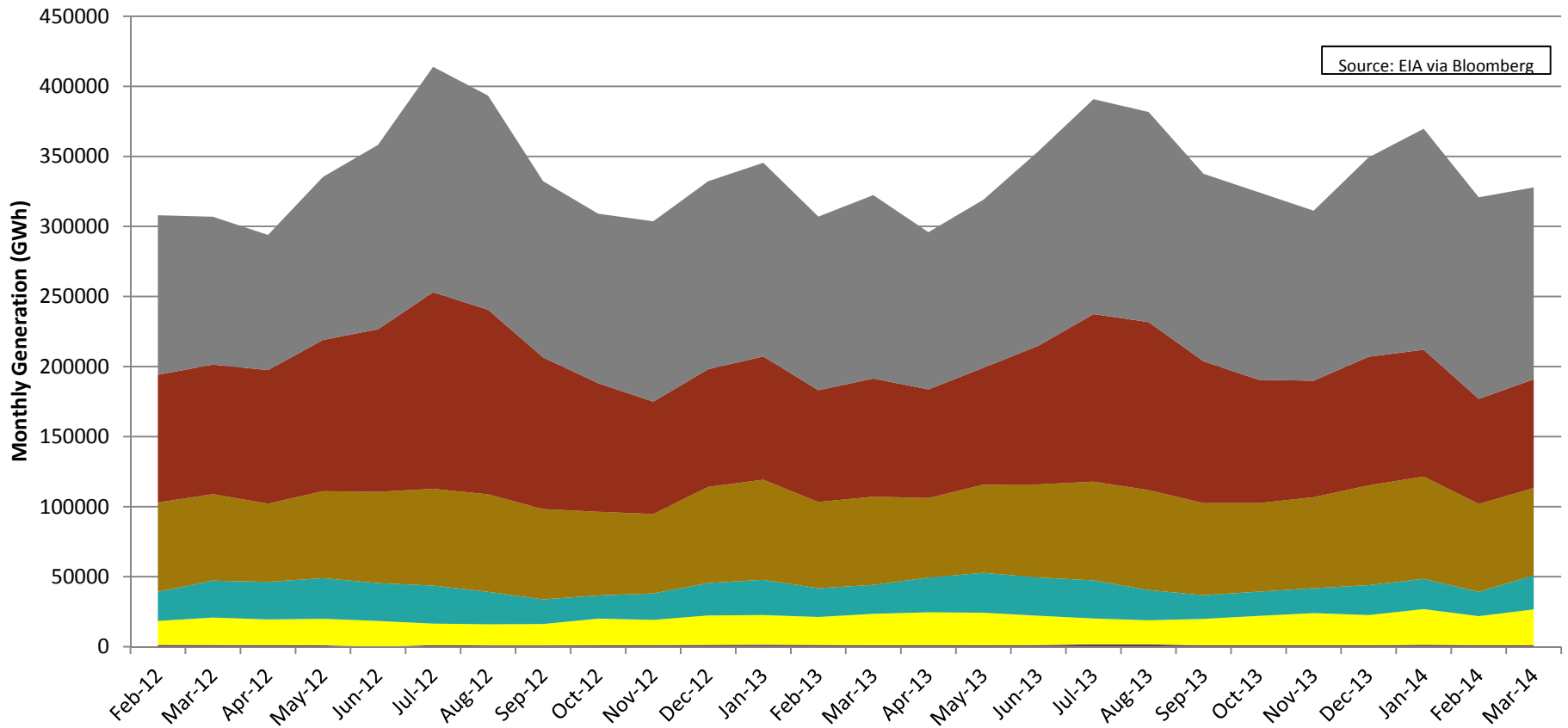
**US Total Generation Mix,
Feb '12 to Mar '14**

States: All

- Coal Generation in Mar '14 was 137004 GWh (42%).
- NatGas Generation in Mar '14 was 77505 GWh (24%).
- Nuclear Generation in Mar '14 was 62395 GWh (19%).
- Hydro Generation in Mar '14 was 24243 GWh (7%).
- Other Renewable Generation in Mar '14 was 25712 GWh (8%).
- Oil Generation in Mar '14 was 965 GWh (0%).

Total Generation in Mar '14 was 327824 GWh.

Source: EIA via Bloomberg





Natural Gas and Fuels Markets

Central

Midwest Annual Average Day-Ahead Natural Gas Prices

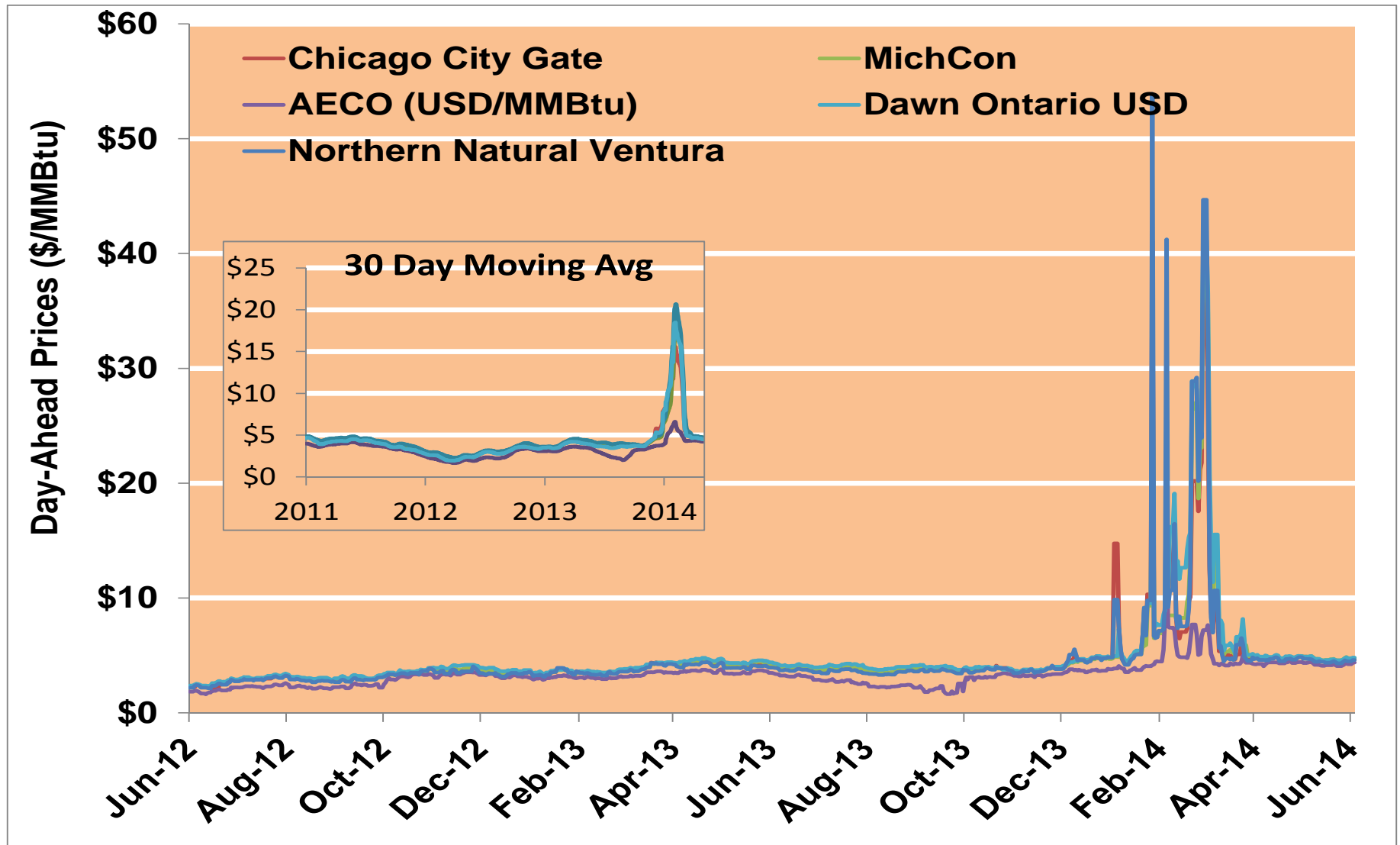
	Average Day Ahead Prices (\$/MMBtu)	Chicago City Gate	MichCon	AECO C Hub Natural Gas/USD	Dawn Ontario USD	NNG/NBP Ventura	Henry Hub
2011	Annual	4.12	4.20	3.66	4.37	4.03	3.98
	Summer	4.24	4.33	3.78	4.44	4.13	4.14
	Winter 2011/2012	2.87	2.94	2.49	3.21	2.78	2.74
2012	Annual	2.85	2.90	2.39	3.07	2.77	2.75
	Summer	2.76	2.80	2.24	2.93	2.70	2.69
	Winter 2012/2013	3.63	3.67	3.22	3.84	3.57	3.47
2013	Annual	3.86	3.92	3.09	4.08	3.80	3.70
	Summer	3.85	3.97	2.94	4.15	3.77	3.75
	Winter 2013/2014	7.59	7.65	4.36	8.68	8.19	4.61
2014 YTD	Annual	7.72	7.85	4.68	8.83	8.29	4.88
	Summer	4.64	4.77	4.28	4.80	4.58	4.52
	Winter 2014/2015						

Notes:

Source: Derived from ICE data

Updated 6/3/2014

Midwest Day-Ahead Prices

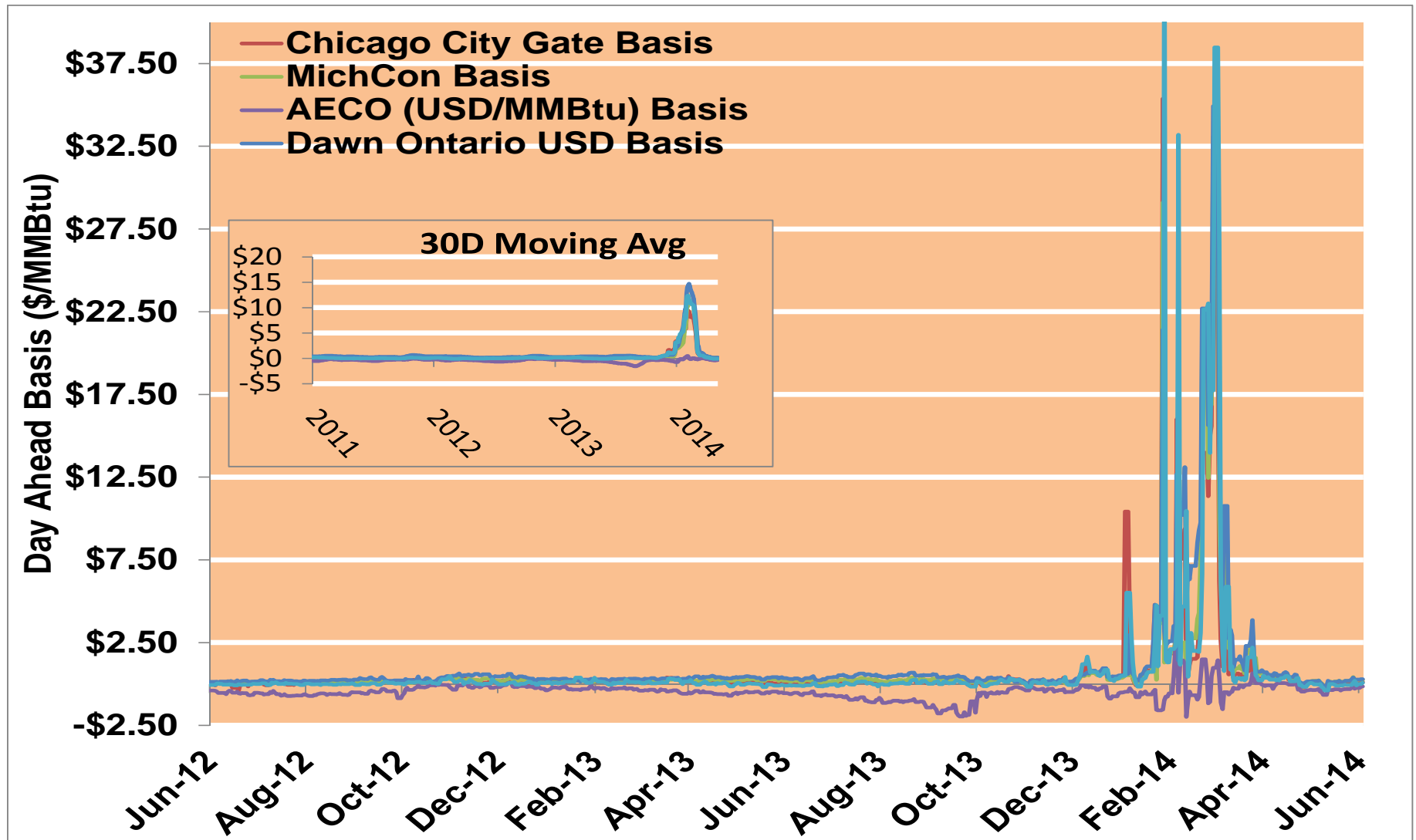


Notes:

Source: Derived from ICE data

Updated 6/3/2014

Midwest Day-Ahead Basis

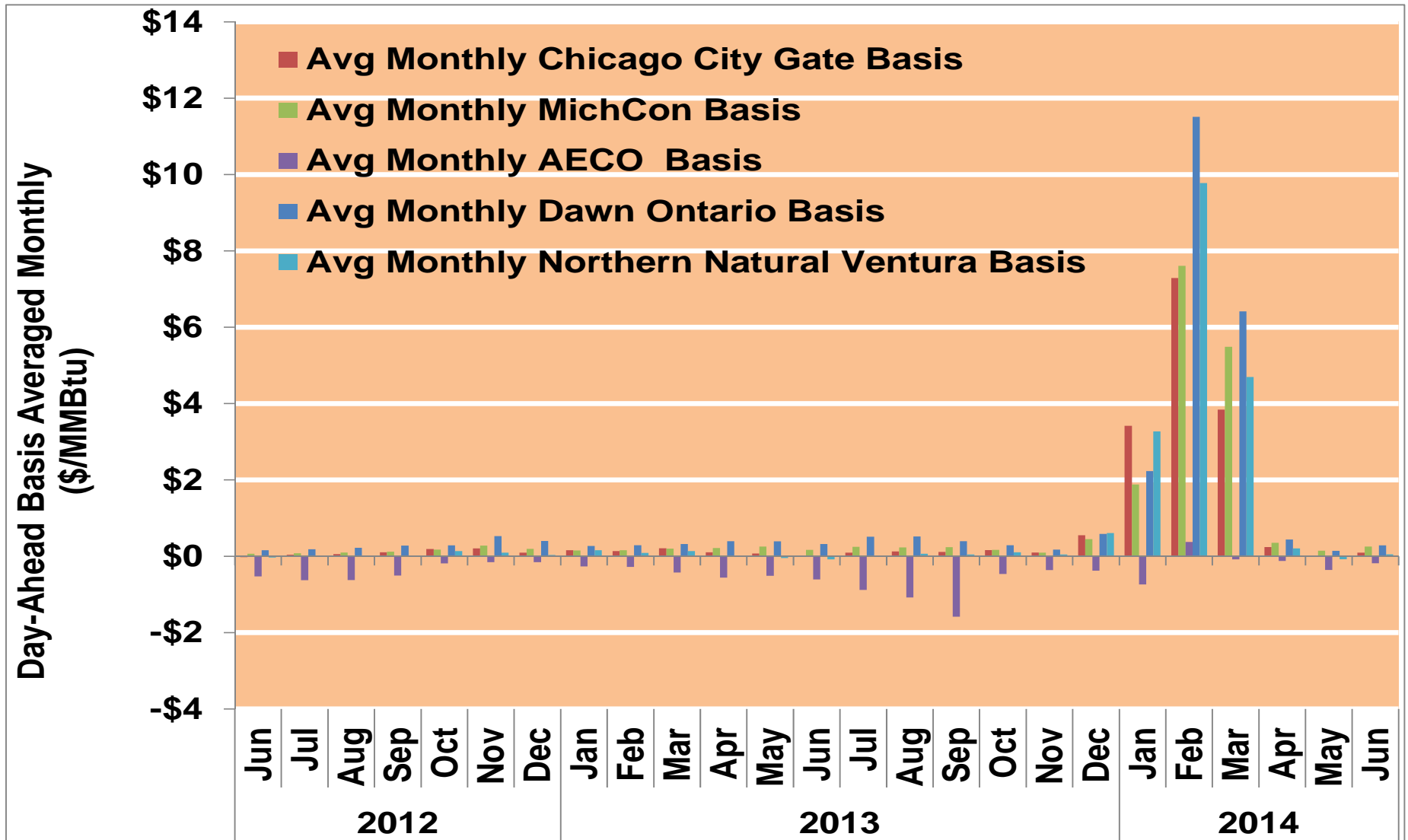


Notes:

Source: Derived from ICE data

Updated 6/3/2014

Midwest Monthly Average Basis Value To Henry Hub

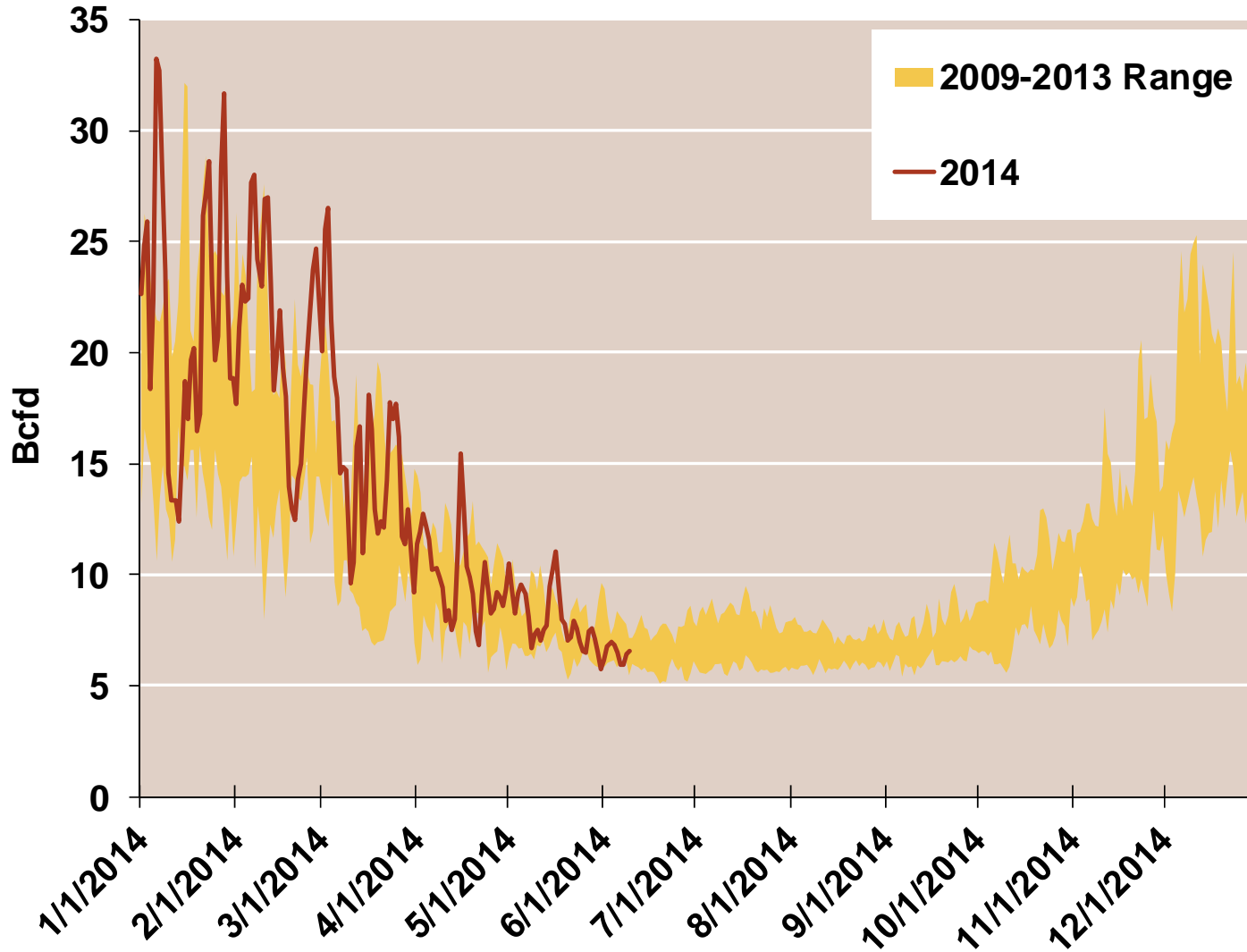


Notes:

Source: Derived from ICE data

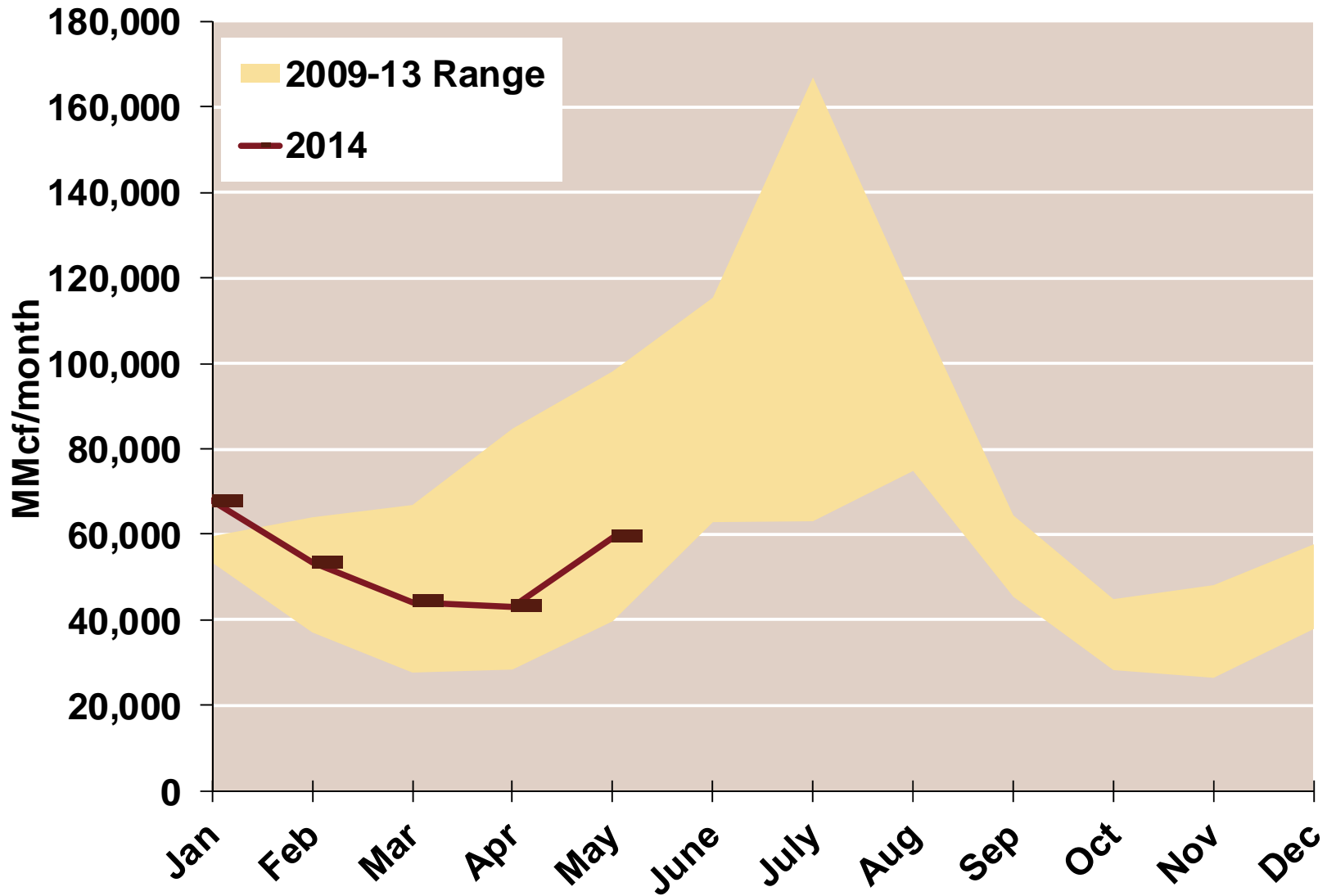
Updated 6/3/2014

Daily Midwest Natural Gas Demand All Sectors



Source: Derived from *Bentek Energy* data

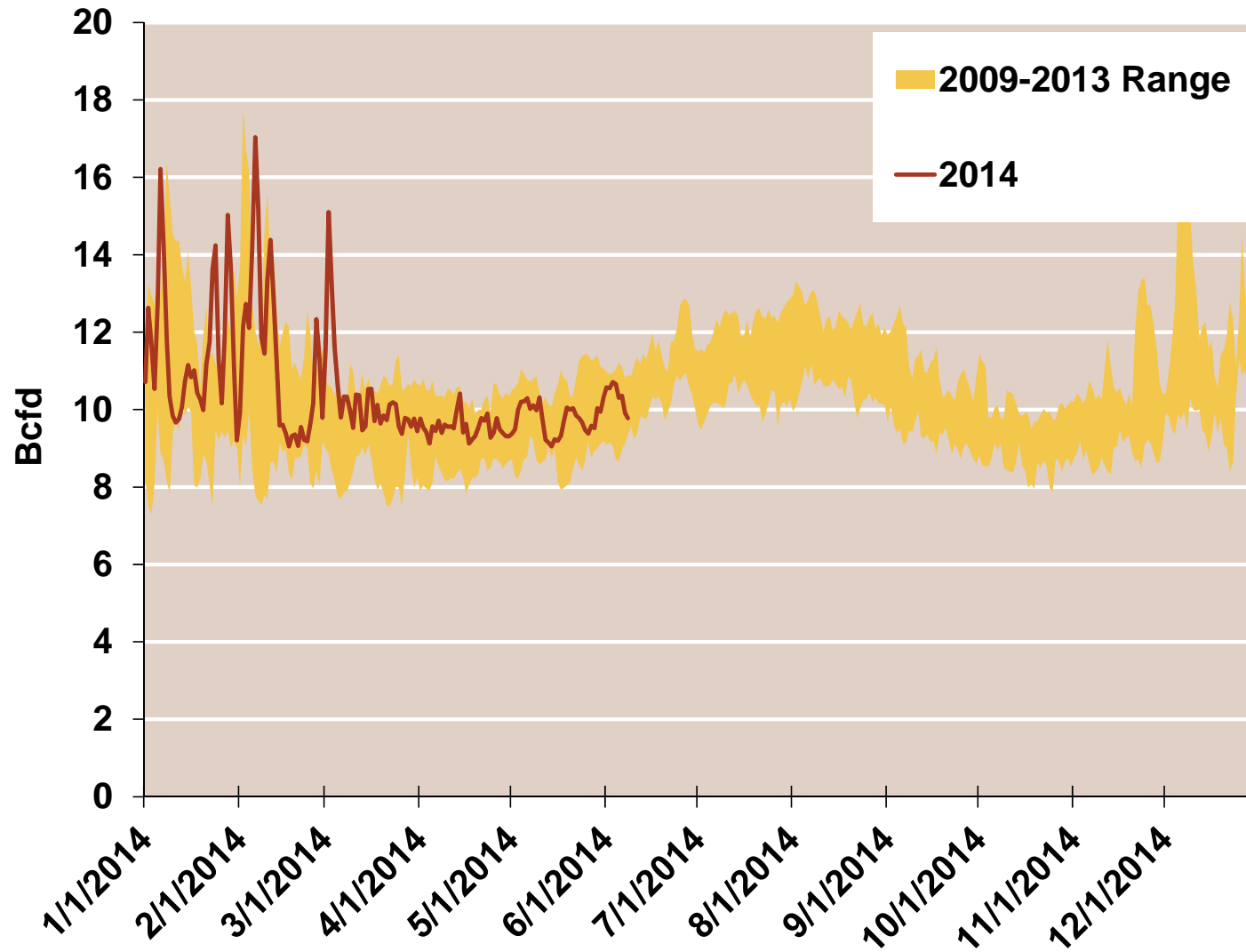
Midwest Natural Gas Consumption for Power Generation



Source: Derived from *Bentek Energy* data

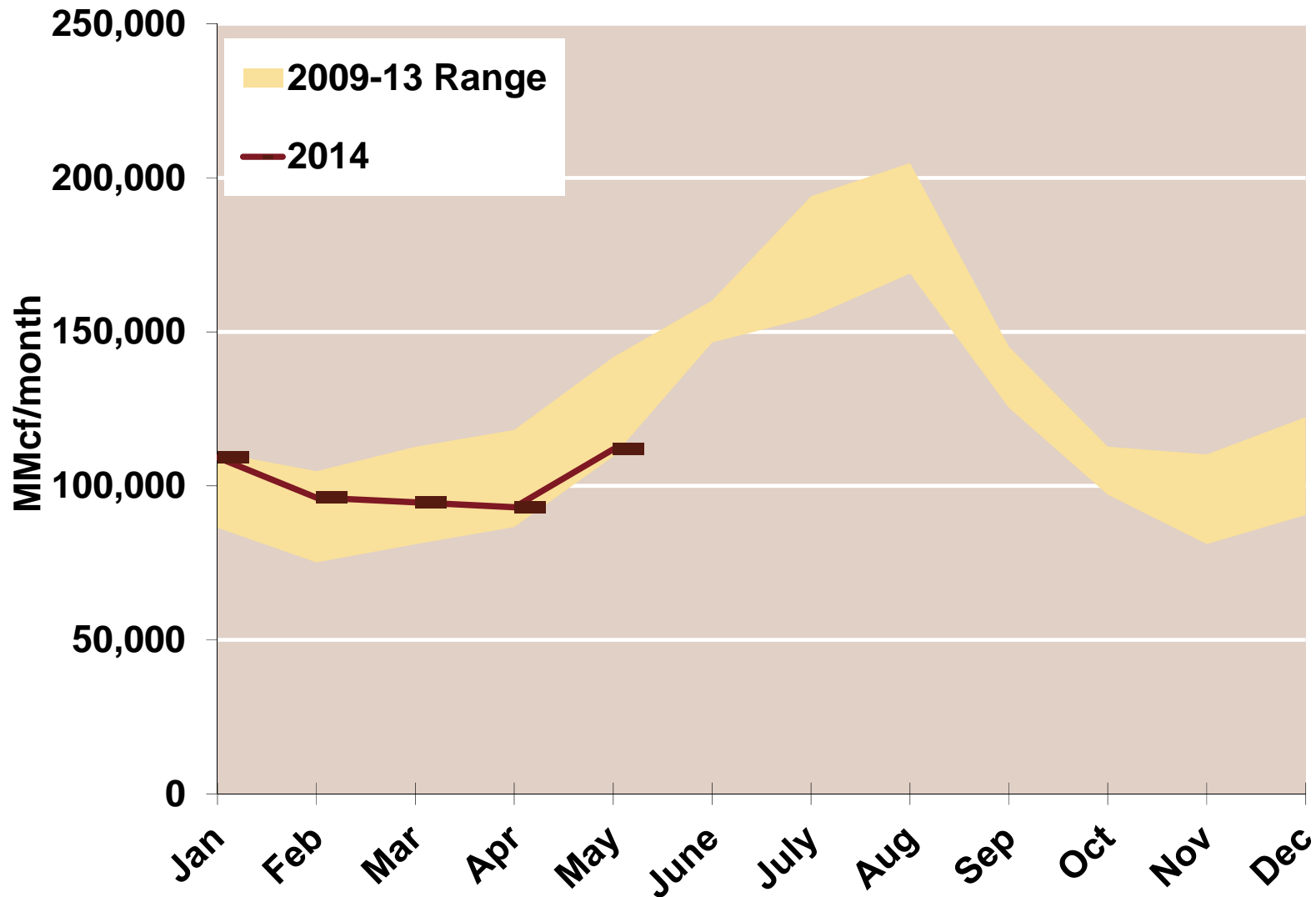
Updated: May 2014

Daily Texas Natural Gas Demand All Sectors



Source: Derived from *Bentek Energy* data

Texas Natural Gas Consumption for Power Generation

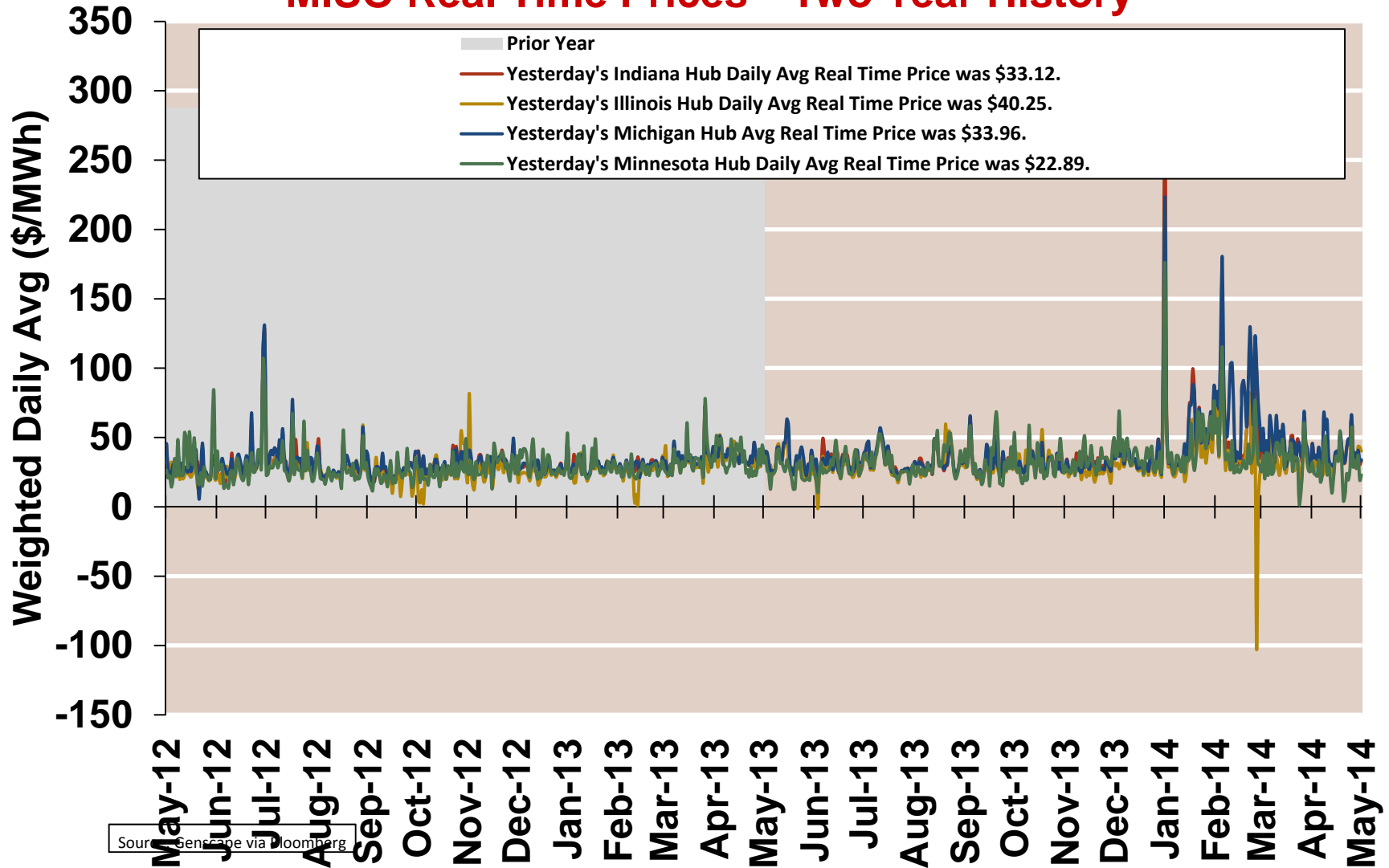




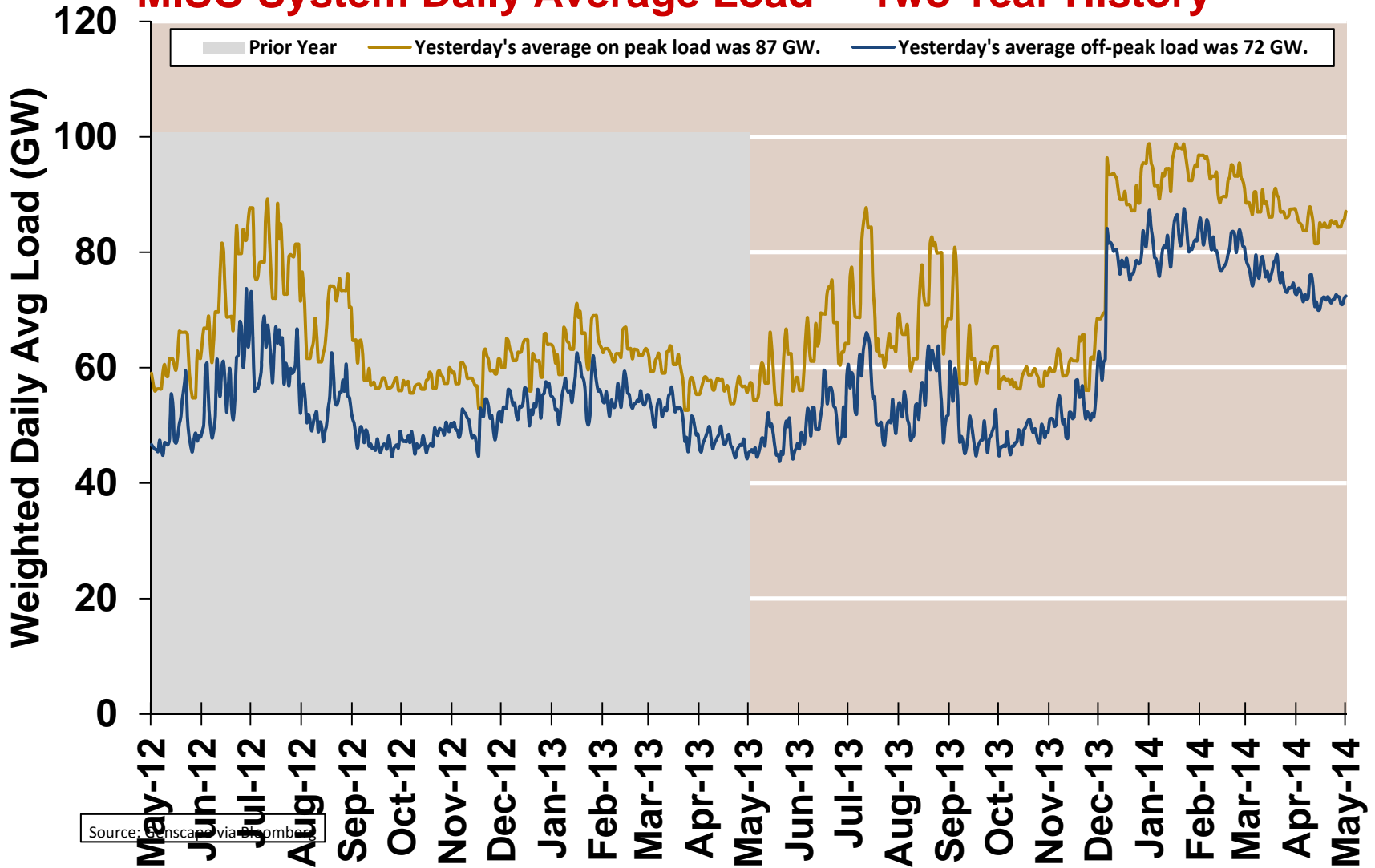
Electricity Markets

Central

MISO Real Time Prices—Two Year History

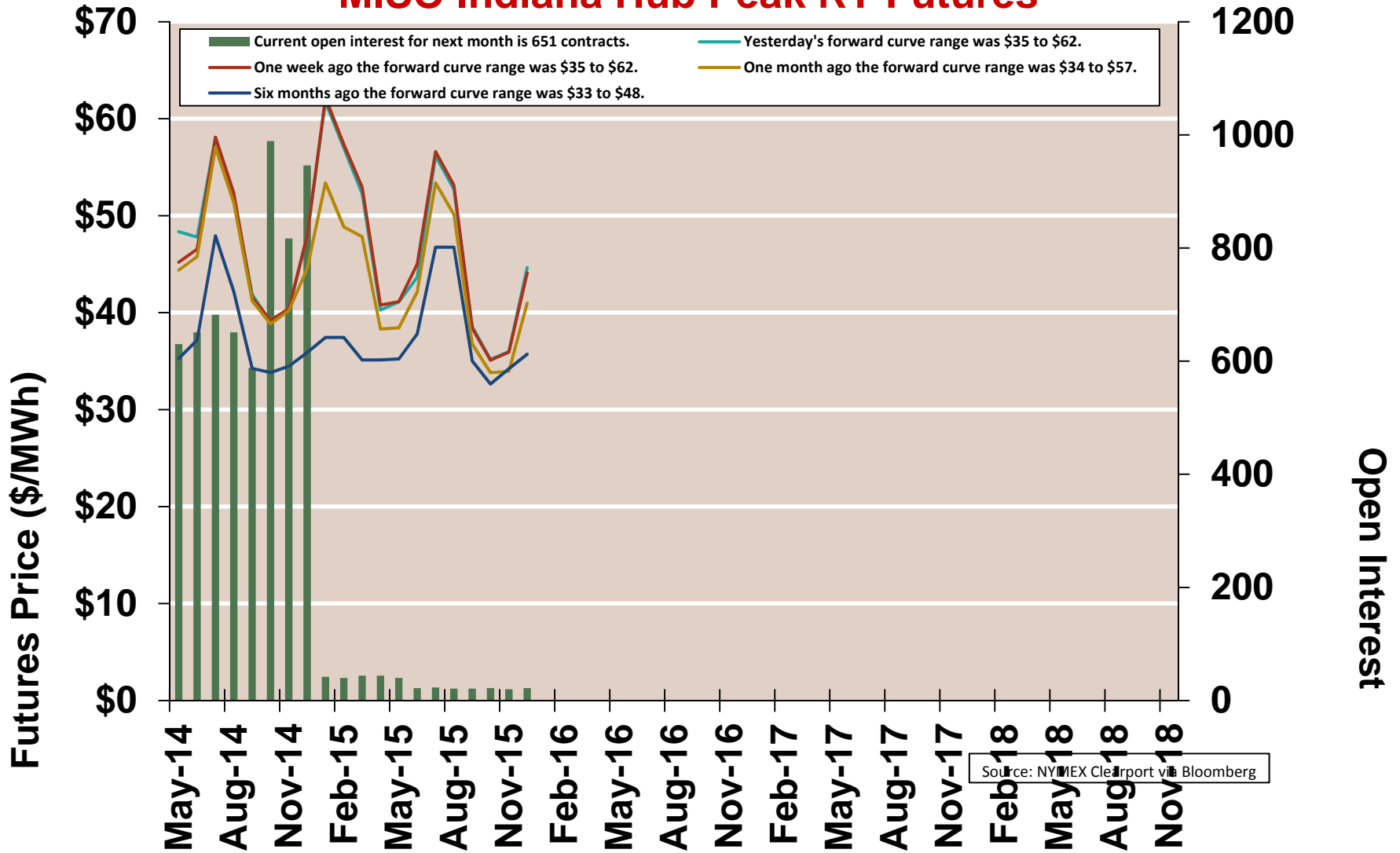


MISO System Daily Average Load — Two Year History

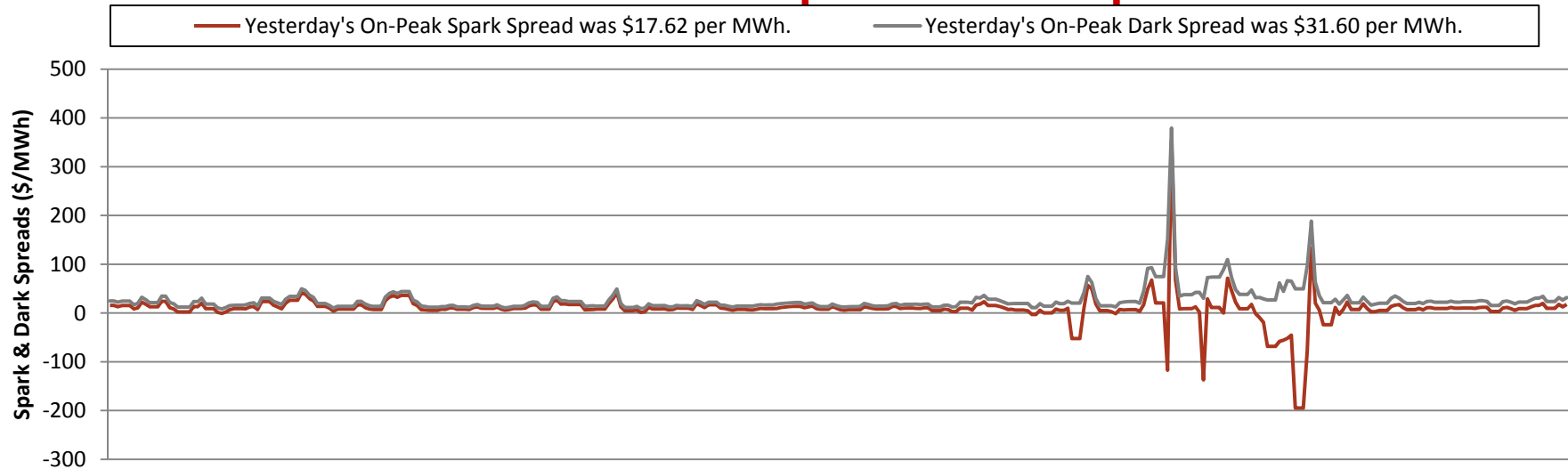


Source: Enscape via Bloomberg

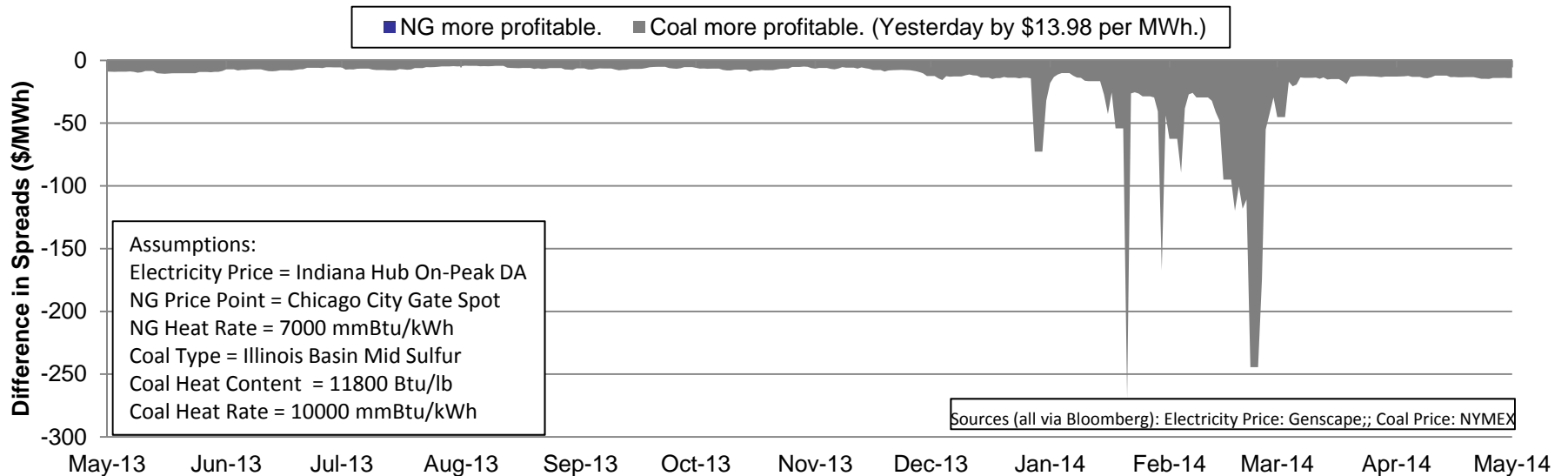
MISO Indiana Hub Peak RT Futures



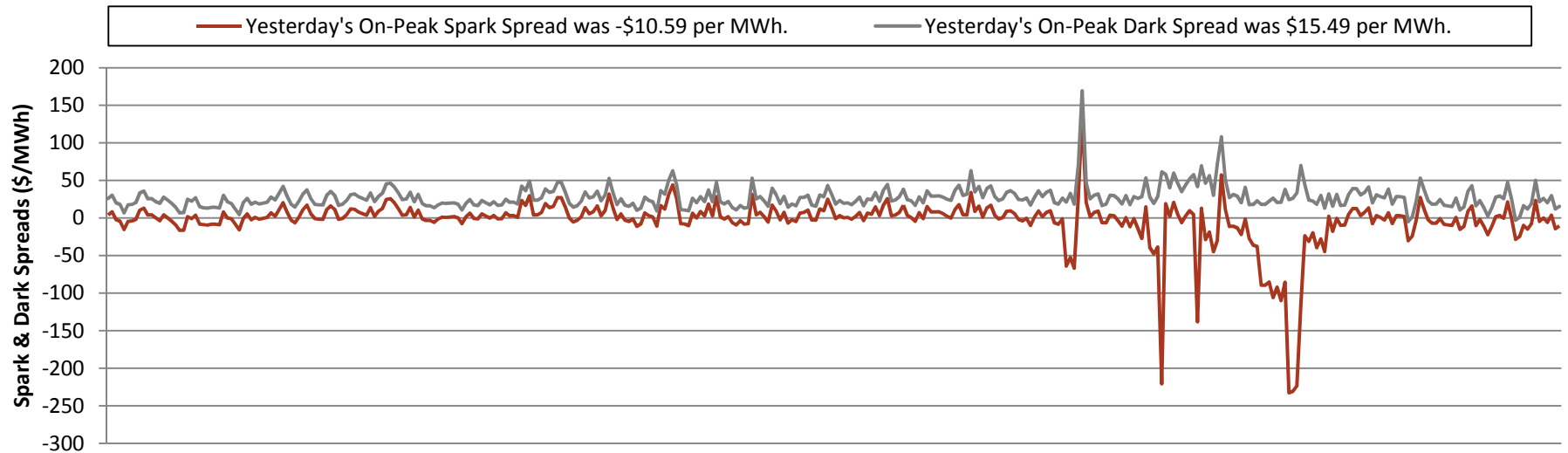
MISO East On-Peak Spark & Dark Spreads



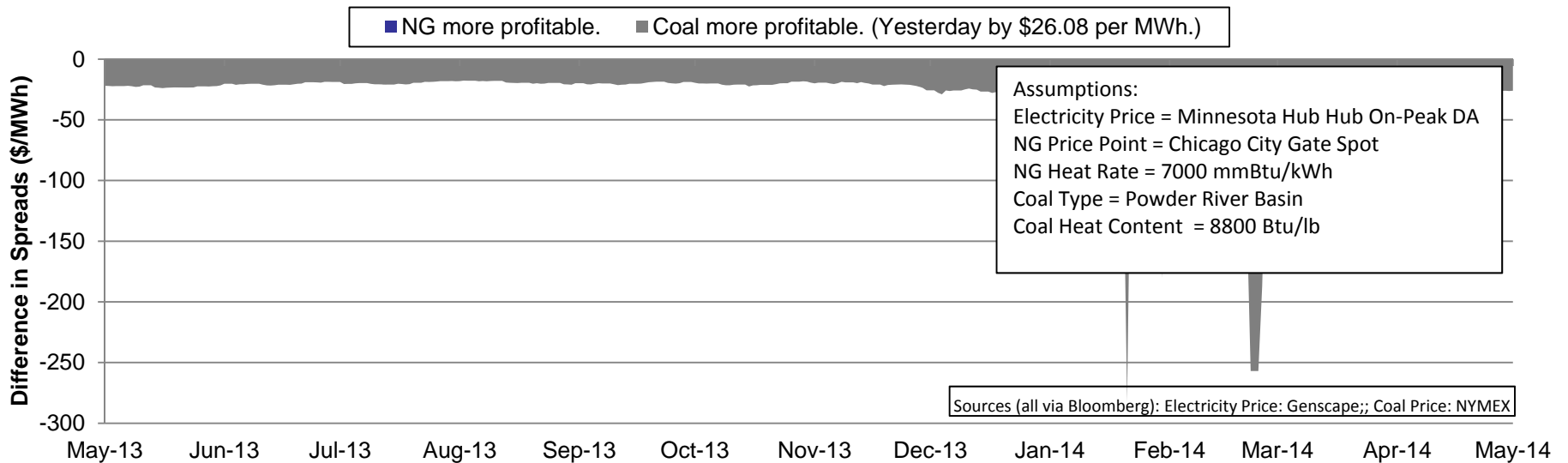
Spark Spread minus Dark Spread, 5/7/13 to 5/7/14



MISO West On-Peak Spark & Dark Spreads



Spark Spread minus Dark Spread, 5/7/13 to 5/7/14

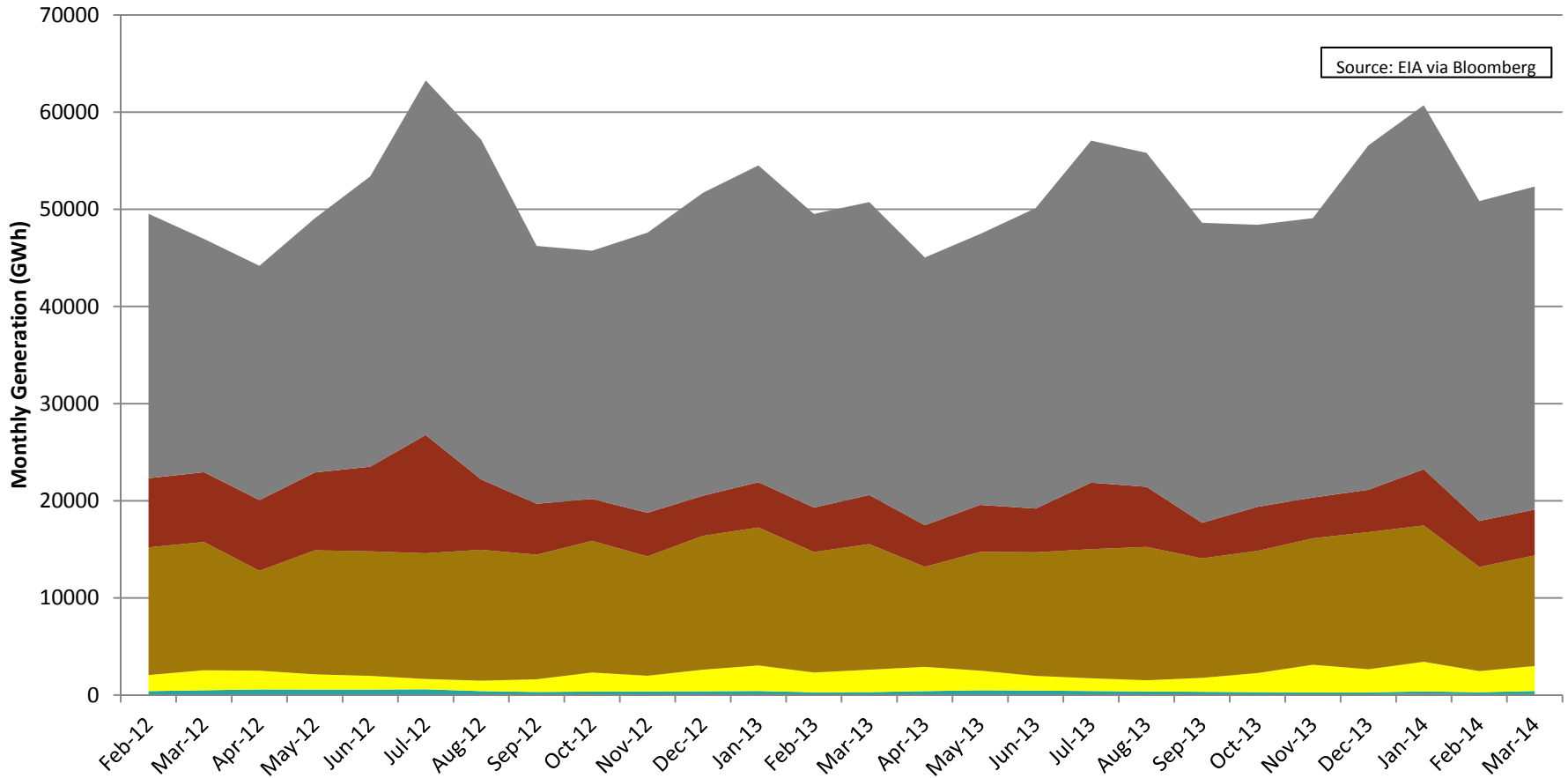


East North Central Regional Generation Mix, Feb '12 to Mar '14

States: IL, IN, MI, OH, WI

- Coal Generation in Mar '14 was 33234 GWh (64%).
- Gas Generation in Mar '14 was 4726 GWh (9%).
- Nuclear Generation in Mar '14 was 11385 GWh (22%).
- Othr Renew Generation in Mar '14 was 2574 GWh (5%).
- Hydro Generation in Mar '14 was 340 GWh (1%).
- Oil Generation in Mar '14 was 76 GWh (0%).
- Total Generation in Mar '14 was 52335 GWh.

Source: EIA via Bloomberg



West North Central Regional Generation Mix, Feb '12 to Mar '14

States: IA, KS, MN, MO, ND, NE, SD

- Coal Generation in Mar '14 was 18554 GWh (65%).
- Gas Generation in Mar '14 was 471 GWh (2%).
- Othr Renew Generation in Mar '14 was 5097 GWh (18%).
- Nuclear Generation in Mar '14 was 3695 GWh (13%).
- Hydro Generation in Mar '14 was 788 GWh (3%).
- Oil Generation in Mar '14 was 55 GWh (0%).
- Total Generation in Mar '14 was 28660 GWh.

Source: EIA via Bloomberg

