

# COMPANIES AND NGOs

## CO89 – Blue Ridge Environmental Defense League

20161222-5404 FERC PDF (Unofficial) 12/22/2016 2:43:11 PM

CO89-38  
cont'd



Hardaway Blades, Paleo Period, 9,500 – 9,000 BP



Unidentifiable Paleo Knife Blades 13,000 – 8,000

*Esse quam videri*

# COMPANIES AND NGOs

## CO89 – Blue Ridge Environmental Defense League

20161222-5404 FERC PDF (Unofficial) 12/22/2016 2:43:11 PM

CO89-38  
cont'd



Jude Point Early/Mid-Archaic 9,000 – 6,000 BP



Taylor Points Early/Mid-Archaic 9,000 – 6,000 BP

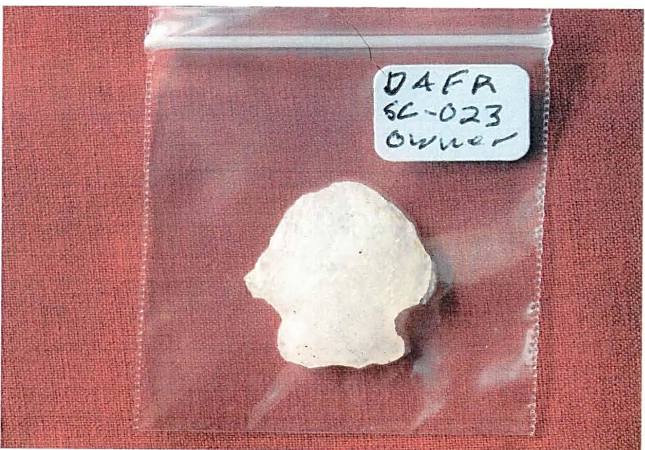
*Esse quam videri*

# COMPANIES AND NGOs

## CO89 – Blue Ridge Environmental Defense League

20161222-5404 FERC PDF (Unofficial) 12/22/2016 2:43:11 PM

CO89-38  
cont'd



Kirk Corner Notches Stemmed Scraper Early/Mid-Atlantic 9,000 – 6,000 BP



Kirk Corner Notched Points Earl/Mid-Archaic 9,000 – 6,000 BP

*Esse quam videri*

# COMPANIES AND NGOs

## CO89 – Blue Ridge Environmental Defense League

20161222-5404 FERC PDF (Unofficial) 12/22/2016 2:43:11 PM

CO89-38  
cont'd



Decatur Point Early/Late Archaic 9,000 – 3,000 BP



Stanley Narrow Base Points Early/Mid-Archaic 8,000 – 5,000 BP

*Esse quam videri*

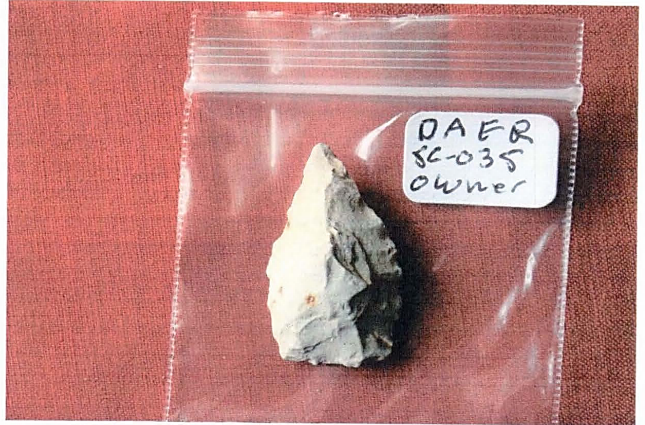
# COMPANIES AND NGOs

## CO89 – Blue Ridge Environmental Defense League

CO89-38  
cont'd



South Hampton Points Early/Mid-Archaic 8,000 – 6,000 BP



Connerly Points Mid-Archaic 7,500 – 4,500 BP

*Esse quam videri*

# COMPANIES AND NGOs

## CO89 – Blue Ridge Environmental Defense League

20161222-5404 FERC PDF (Unofficial) 12/22/2016 2:43:11 PM

CO89-38  
cont'd



Guilford Points, Stemmed, Straight Base and Yuma, Mid-Archaic 6,500 – 5,000 BP



Appalachian Points Mid/Late-Archaic 6,000 – 3,000 BP

*Esse quam videri*

# COMPANIES AND NGOs

## CO89 – Blue Ridge Environmental Defense League

20161222-5404 FERC PDF (Unofficial) 12/22/2016 2:43:11 PM

CO89-38  
cont'd



Halifax Points Mid/Late-Archaic 6,000 – 3,000 BP



Miscellaneous Point fragments and Knife Blades spanning the Archaic Period 9,000 – 3,000 BP

*Esse quam videri*

**COMPANIES AND NGOs**  
**CO89 – Blue Ridge Environmental Defense League**

20161222-5404 FERC PDF (Unofficial) 12/22/2016 2:43:11 PM

CO89-38  
cont'd



Miscellaneous Point fragments and Knife Blades spanning the Archaic Period 9,000 to 3,000 BP



Miscellaneous Point fragments and Knife Blades spanning the Archaic Period 9,000 – 3,000 BP

*Esse quam videri*