

## **APPENDIX J**

### **Oil and Gas Wells**

*This page intentionally left blank*

**APPENDIX J-1**

**Oil and Gas Wells**

**Mountain Valley Project**

*This page intentionally left blank*

**APPENDIX J-1**

**Gas and Oil Wells within 0.25 Mile of the Mountain Valley Project**

<b>MP</b>	<b>Distance from Centerline (feet)</b>	<b>Operator</b>	<b>Well Status</b>	<b>County</b>
0.0	1,175.0	Meadow Ridge Development, LLC	Active	Wetzel
0.2	1,311.0	Diversified Resources, Inc.	Inactive	Wetzel
0.6	973.1	DAC Energy, LLC	Active	Wetzel
0.7	508.1	DAC Energy, LLC	Active	Wetzel
1.0	596.2	DAC Energy, LLC	Active	Wetzel
1.7	30.6	CNX Gas Company, LLC	Never Issued/drilled	Wetzel
1.8	209.8	CNX Gas Company, LLC	Never Issued/drilled	Wetzel
2.7	1,846.3	EQT Production Company	Inactive	Wetzel
2.7	1,976.3	Southeastern Gas Co.	Inactive	Wetzel
3.3	326.8	Hefner, G. B. & Assoc., Inc.	Inactive	Wetzel
3.5	808.8	East Resources, Inc.	Inactive	Wetzel
3.9	571.9	East Resources, Inc.	Inactive	Wetzel
3.9	762.0	East Resources, Inc.	Inactive	Wetzel
3.9	1162.4	East Resources, Inc.	Inactive	Wetzel
4.1	1,135.8	East Resources, Inc.	Inactive	Wetzel
4.3	1,124.2	Lucas Well Service, Inc.	Inactive	Wetzel
4.5	192.8	East Resources, Inc.	Never Issued/drilled	Wetzel
4.5	484.4	East Resources, Inc.	Never Issued/drilled	Wetzel
4.5	1,243.6	Diversified Resources, Inc.	Active	Wetzel
4.6	146.3	East Resources, Inc.	Inactive	Wetzel
4.6	484.3	East Resources, Inc.	Never Issued/drilled	Wetzel
4.6	730.7	Lucas Well Service, Inc.	Inactive	Wetzel
4.7	1,220.9	Lucas Well Service, Inc.	Inactive	Wetzel
4.7	279.6	East Resources, Inc.	Never Issued/drilled	Wetzel
4.8	303.2	East Resources, Inc.	Inactive	Wetzel
4.8	322.0	East Resources, Inc.	Inactive	Wetzel
4.9	453.1	HG Energy, LLC	Active	Wetzel
4.9	1,289.2	Lucas Well Service, Inc.	Inactive	Wetzel
5.8	371.2	East Resources, Inc.	Inactive	Wetzel
6.1	525.9	East Resources, Inc.	Inactive	Wetzel
6.1	1,179.7	Perkins Oil & Gas Inc.	Inactive	Wetzel
6.2	1,228.3	Perkins Oil & Gas Inc.	Inactive	Wetzel
6.2	242.9	Perkins Oil & Gas Inc.	Inactive	Wetzel
6.4	258.2	East Resources, Inc.	Inactive	Wetzel
8.1	945.0	East Resources, Inc.	Inactive	Wetzel
12.0	633.2	Braxton Oil & Gas Corp.	Inactive	Harrison
12.1	1,303.4	Operator Unknown	Inactive	Harrison
12.3	142.3	Consol Gas Company	Never Issued/drilled	Harrison
12.3	176.8	Ross and Wharton Gas Company, Inc.	Inactive	Harrison
12.4	900.9	Ross and Wharton Gas Company, Inc.	Active	Harrison
12.7	243.5	Consol Gas Company	Never Issued/drilled	Harrison
13.3	356.9	Perkins Oil & Gas, Inc.	Inactive	Harrison
13.6	401.4	Perkins Oil & Gas, Inc.	Inactive	Harrison

**APPENDIX J-1**

**Gas and Oil Wells within 0.25 Mile of the Mountain Valley Project**

<b>MP</b>	<b>Distance from Centerline (feet)</b>	<b>Operator</b>	<b>Well Status</b>	<b>County</b>
16.0	970.7	Devonian Gas Production	Active	Harrison
16.0	228.4	Waco Oil & Gas Co, Inc.	Active	Harrison
16.3	1,100.6	XTO Energy, Inc.	Active	Harrison
16.7	1,056.3	Bowie Inc	Active	Harrison
16.8	654.0	P. G. Oil & Gas, LLC	Active	Harrison
16.9	742.6	Pardee Minerals, LLC	Never Issued/drilled	Harrison
17.1	148.9	Ross and Wharton Gas Company, Inc.	Active	Harrison
17.5	605.7	Consol Gas Company	Active	Harrison
17.5	938.5	Pardee Minerals, LLC	Never Issued/drilled	Harrison
17.7	1,038.9	UMC Petroleum Corporation	Never Issued/drilled	Harrison
17.8	561.9	Gassearch Corporation	Active	Harrison
19.5	600.9	Deran Resources, Inc.	Active	Harrison
19.5	918.0	Diversified Resources, Inc.	Inactive	Harrison
19.6	150.3	Hall Drilling, LLC	Never Issued/drilled	Harrison
20.0	564.9	Consol Gas Company	Never Issued/drilled	Harrison
20.0	967.2	Hall Drilling, LLC	Never Issued/drilled	Harrison
20.7	1,232.7	Aries Petroleum Corp.	Inactive	Harrison
20.8	1,255.3	Tenmile Land LLC	Active	Harrison
20.8	1,315.6	Hall Drilling, LLC	Never Issued/drilled	Harrison
21.2	1,058.2	Perkins Oil & Gas, Inc.	Inactive	Harrison
21.3	585.0	Waco Oil & Gas Co, Inc.	Active	Harrison
21.8	519.8	Consol Gas Company	Active	Harrison
21.9	410.9	Commonwealth Energy, Inc.	Active	Harrison
21.9	714.7	Energy Production, Inc.	Active	Harrison
21.9	967.9	Petroleum Development Corporation	Never Issued/drilled	Harrison
22.0	684.7	Energy Production, Inc.	Active	Harrison
22.2	1,068.6	C & P Oil & Gas, Inc.	Never Issued/drilled	Harrison
22.3	53.7	C & P Oil & Gas, Inc.	Never Issued/drilled	Harrison
22.3	205.8	Consol Gas Company	Active	Harrison
22.5	635.0	Tenmile Land, LLC	Active	Harrison
22.5	1,090.2	Tenmile Land, LLC	Active	Harrison
22.6	966.7	C & P Oil & Gas, Inc	Inactive	Harrison
22.6	1,312.0	Hall Drilling, LLC	Never Issued/drilled	Harrison
22.8	1,313.3	Waco Oil & Gas Co, Inc.	Active	Harrison
22.9	1,224.1	Mutschelknaus, Clarence W	Active	Harrison
23.0	134.5	Waco Oil & Gas Co, Inc.	Active	Harrison
23.0	370.9	Tenmile Land LLC	Active	Harrison
23.0	509.1	Waco Oil & Gas Co, Inc.	Active	Harrison
23.2	144.1	Waco Oil & Gas Co, Inc.	Active	Harrison
23.4	982.0	Antero Resources Corporation	Active	Harrison
23.4	987.1	Hall Drilling, LLC	Never Issued/drilled	Harrison
23.4	1,172.8	Antero Resources Corporation	Active	Harrison
23.4	1,178.7	Antero Resources Corporation	Active	Harrison

**APPENDIX J-1**

**Gas and Oil Wells within 0.25 Mile of the Mountain Valley Project**

<b>MP</b>	<b>Distance from Centerline (feet)</b>	<b>Operator</b>	<b>Well Status</b>	<b>County</b>
23.8	850.3	Trans-Capital Investment Group, Inc.	Inactive	Harrison
24.0	1,203.1	Lone Pine Operating Company, Inc.	Active	Harrison
24.1	279.5	Lone Pine Operating Company, Inc.	Active	Harrison
24.1	510.8	Mutschelknaus, Clarence W	Active	Harrison
24.5	691.0	Operator Unknown	Inactive	Harrison
24.8	1,314.2	Hall Drilling, LLC	Never Issued/drilled	Harrison
25.1	271.3	Hall Drilling, LLC	Never Issued/drilled	Harrison
25.2	1,171.9	Hall Drilling, LLC	Inactive	Harrison
27.8	413.7	Tenmile Land LLC	Active	Harrison
27.9	594.6	Lone Pine Operating Company, Inc.	Inactive	Harrison
27.9	634.8	Lone Pine Operating Company, Inc.	Inactive	Harrison
27.9	991.9	Lone Pine Operating Company, Inc.	Active	Harrison
28.0	70.8	Tenmile Land LLC	Active	Harrison
28.1	26.4	Consol Gas Company	Active	Harrison
28.3	848.0	Mutschelknaus, Clarence W	Active	Harrison
28.5	582.2	Perkins Oil & Gas, Inc.	Inactive	Harrison
28.5	786.2	Consol Gas Company	Never Issued/drilled	Harrison
28.4	950.4	HG Energy, LLC	Active	Harrison
28.9	114.2	Blackrock Enterprises, LLC	Active	Harrison
28.9	1,145.9	Murray Hill Energy, Inc.	Active	Harrison
29.0	1,207.3	Blackrock Enterprises, LLC	Active	Harrison
29.2	208.2	Tenmile Land LLC	Active	Harrison
29.4	1,006.1	Energy Corporation of America	Active	Harrison
29.7	700.4	Antero Resources Corporation	Active	Harrison
29.9	1,000.8	Consol Gas Company	Never Issued/drilled	Harrison
30.0	459.7	Enervest Operating LLC	Active	Harrison
30.1	678.9	Enervest Operating LLC	Active	Harrison
30.3	394.3	Interstate Energy, Inc.	Inactive	Harrison
30.3	466.9	Enervest Operating LLC	Active	Harrison
30.4	1,251.2	Energy Corporation of America	Active	Harrison
30.6	176.5	Energy Corporation of America	Active	Harrison
30.7	906.0	Consol Gas Company	Active	Harrison
30.8	1,194.7	Consol Gas Company	Active	Harrison
31.3	1,152.6	Berry Energy, Inc.	Active	Harrison
31.5	496.5	Consol Gas Company	Active	Doddridge
31.6	1,170.5	Consol Gas Company	Active	Doddridge
31.7	995.9	Alliance Petroleum Corporation	Active	Doddridge
31.9	300.3	Consol Gas Company	Active	Doddridge
31.9	1,158.0	Operator Unknown	Never Issued/drilled	Doddridge
32.2	1,302.3	Consol Gas Company	Active	Doddridge
32.2	474.8	Consol Gas Company	Active	Doddridge
32.6	693.6	Consol Gas Company	Active	Harrison
32.7	1,324.1	Consol Gas Company	Active	Harrison

**APPENDIX J-1**

**Gas and Oil Wells within 0.25 Mile of the Mountain Valley Project**

<b>MP</b>	<b>Distance from Centerline (feet)</b>	<b>Operator</b>	<b>Well Status</b>	<b>County</b>
32.8	299.2	Consol Gas Company	Active	Harrison
32.9	563.5	Antero Resources Corporation	Never Issued/drilled	Harrison
33.0	1,154.2	Consol Gas Company	Active	Harrison
33.0	1,206.8	Petroleum Development Corporation	Inactive	Harrison
33.2	374.5	Consol Gas Company	Active	Harrison
33.5	563.3	Energy Corporation of America	Active	Doddridge
33.7	921.4	Consol Gas Company	Active	Harrison
33.9	226.0	Petroleum Service Partners, Inc.	Active	Doddridge
34.2	207.0	EQT Production Company	Active	Doddridge
34.4	1,177.9	Consol Gas Company	Active	Doddridge
34.5	246.9	Consol Gas Company	Active	Doddridge
34.6	472.3	Antero Resources Corporation	Unknown	Doddridge
34.6	481.8	Antero Resources Corporation	Unknown	Doddridge
34.6	491.3	Antero Resources Corporation	Unknown	Doddridge
34.6	500.8	Antero Resources Corporation	Unknown	Doddridge
34.6	510.4	Antero Resources Corporation	Unknown	Doddridge
34.6	1,323.3	HG Energy, LLC	Active	Doddridge
34.7	566.0	Consol Gas Company	Active	Doddridge
34.8	449.4	Braxton Oil & Gas Corp.	Active	Doddridge
35.3	935.4	Consol Gas Company	Active	Doddridge
35.6	708.4	Ross and Wharton Gas Company, Inc.	Never Issued/drilled	Doddridge
35.5	1,194.6	EQT Production Company	Never Issued/drilled	Harrison
35.6	647.6	Marshall Gas & Oil Corporation	Inactive	Doddridge
35.6	1,173.8	Marshall Gas & Oil Corporation	Active	Doddridge
35.8	320.2	Marshall Gas & Oil Corporation	Inactive	Doddridge
35.9	768.8	Marshall Gas & Oil Corporation	Active	Doddridge
36.2	196.5	Marshall Gas & Oil Corporation	Inactive	Doddridge
36.2	570.1	Marshall Gas & Oil Corporation	Active	Doddridge
36.5	1,109.4	Mutschelknaus, Clarence W	Active	Harrison
36.8	209.4	Braxton Oil & Gas Corp.	Active	Doddridge
36.8	1,254.1	Operator Unknown	Inactive	Harrison
37.0	481.7	Operator Unknown	Inactive	Harrison
37.0	1,007.3	Diversified Resources, Inc.	Active	Doddridge
37.1	914.9	Tenmile Land LLC	Active	Harrison
37.4	267.8	Marshall Gas & Oil Corporation	Active	Harrison
37.8	1114.2	Tenmile Land LLC	Active	Harrison
37.9	427.3	Dominion Transmission. Inc.	Inactive	Harrison
38.0	1,005.0	Tenmile Land LLC	Active	Harrison
38.0	1,273.9	Braxton Oil & Gas Corp.	Inactive	Harrison
38.1	199.7	Marshall Gas & Oil Corporation	Active	Lewis
38.0	883.6	Diversified Resources, Inc.	Unknown	Harrison
38.3	477.7	Diversified Resources, Inc.	Unknown	Lewis
38.5	1,256.0	Dominion Transmission, Inc.	Active	Lewis



**APPENDIX J-1**

**Gas and Oil Wells within 0.25 Mile of the Mountain Valley Project**

<b>MP</b>	<b>Distance from Centerline (feet)</b>	<b>Operator</b>	<b>Well Status</b>	<b>County</b>
38.7	1,077.6	Dominion Transmission, Inc.	Active	Lewis
39.5	1,152.8	CNG Producing Company	Inactive	Lewis
39.7	732.5	Dominion Transmission, Inc.	Inactive	Lewis
40.6	415.1	Dominion Transmission, Inc.	Inactive	Lewis
41.2	271.7	Dominion Transmission, Inc.	Active	Lewis
41.5	473.4	Dominion Transmission, Inc.	Active	Lewis
41.7	475.6	Dominion Transmission, Inc.	Active	Lewis
42.0	318.1	Dominion Transmission, Inc.	Inactive	Lewis
42.1	749.4	Dominion Transmission, Inc.	Active	Lewis
42.3	784.1	Dominion Transmission, Inc.	Inactive	Lewis
42.3	273.9	Dominion Transmission, Inc.	Active	Lewis
42.5	871.3	Dominion Transmission, Inc.	Active	Lewis
42.7	611.3	Dominion Transmission, Inc.	Active	Lewis
43.0	246.9	Chevron U.S.A., Inc.	Inactive	Lewis
42.9	357.7	Dominion Transmission, Inc.	Active	Lewis
43.2	891.8	Dominion Transmission, Inc.	Active	Lewis
43.3	998.1	Dominion Transmission, Inc.	Active	Lewis
43.3	371.4	Dominion Transmission, Inc.	Inactive	Lewis
43.3	1,115.9	Dominion Transmission, Inc.	Active	Lewis
43.5	1,241.5	Dominion Transmission, Inc.	Active	Lewis
43.5	931.8	Dominion Transmission, Inc.	Active	Lewis
43.6	1,063.9	Dominion Transmission, Inc.	Active	Lewis
43.6	1,322.1	Dominion Transmission, Inc.	Active	Lewis
43.8	960.7	Dominion Transmission, Inc.	Active	Lewis
43.9	1,004.3	Dominion Transmission, Inc.	Inactive	Lewis
43.9	1,135.3	Dominion Transmission, Inc.	Inactive	Lewis
44.1	205.6	Dominion Transmission, Inc.	Active	Lewis
44.1	1,280.8	Dominion Transmission, Inc.	Active	Lewis
44.5	324.3	Dominion Transmission, Inc.	Active	Lewis
44.5	933.7	Bowie, Inc.	Active	Lewis
44.6	1,251.5	Enervest Operating LLC	Active	Lewis
44.8	176.3	Dominion Transmission, Inc.	Active	Lewis
44.9	742.2	Enervest Operating LLC	Active	Lewis
45.1	937.5	Dominion Transmission, Inc.	Active	Lewis
45.5	1,060.0	Chesapeake Appalachia, LLC	Active	Lewis
45.5	392.0	Enervest Operating LLC	Active	Lewis
45.7	525.7	Consol Gas Company	Active	Lewis
45.8	305.1	Consol Gas Company	Active	Lewis
45.9	615.4	Consol Gas Company	Active	Lewis
45.9	1308.0	Consol Gas Company	Active	Lewis
46.0	960.1	Consol Gas Company	Active	Lewis
46.2	403.2	Consol Gas Company	Active	Lewis
46.2	1280.2	Consol Gas Company	Active	Lewis

**APPENDIX J-1**

**Gas and Oil Wells within 0.25 Mile of the Mountain Valley Project**

<b>MP</b>	<b>Distance from Centerline (feet)</b>	<b>Operator</b>	<b>Well Status</b>	<b>County</b>
46.3	204.5	Consol Gas Company	Active	Lewis
46.5	160.0	Petroleum Resources, Inc.	Active	Lewis
46.6	577.1	Consol Gas Company	Active	Lewis
46.5	646.1	Union Gas Corp. (Union Gas Co.)	Inactive	Lewis
46.8	333.6	Petroleum Resources, Inc.	Active	Lewis
46.9	1,249.7	Consol Gas Company	Active	Lewis
47.0	130.2	Consol Gas Company	Active	Lewis
46.9	929.8	Consol Gas Company	Active	Lewis
47.2	683.2	Consol Gas Company	Active	Lewis
47.2	1,235.9	Union Gas Corp. (Union Gas Co.)	Inactive	Lewis
47.2	1,325.4	Consol Gas Company	Active	Lewis
47.3	816.1	Bowie, Inc.	Active	Lewis
47.4	53.2	United Petro Ltd.	Active	Lewis
47.6	588.2	Bowie, Inc.	Active	Lewis
47.6	863.6	Stephen Gas Company	Active	Lewis
47.7	1,068.9	Operator Unknown	Never Issued/drilled	Lewis
47.8	241.8	Chesapeake Appalachia, LLC	Active	Lewis
47.8	886.1	Consol Gas Company	Active	Lewis
48.0	917.5	Chesapeake Appalachia, LLC	Active	Lewis
48.1	194.4	Brookside Gas Co	Never Issued/drilled	Lewis
48.1	545.6	Enervest Operating LLC	Active	Lewis
48.1	918.5	Enervest Operating LLC	Active	Lewis
48.4	312.3	Operator Unknown	Inactive	Lewis
48.3	1,275.1	Enervest Operating LLC	Active	Lewis
48.5	758.7	Enervest Operating LLC	Active	Lewis
48.5	1,310.9	Consol Gas Company	Active	Lewis
48.7	541.1	Enervest Operating LLC	Active	Lewis
48.9	1,023.0	Consol Gas Company	Active	Lewis
49.1	446.6	Consol Gas Company	Active	Lewis
49.3	695.2	Consol Gas Company	Active	Lewis
49.7	520.5	Consol Gas Company	Active	Lewis
49.7	1,171.0	Interstate Energy, Inc.	Inactive	Lewis
49.9	1,329.6	Consol Gas Company	Active	Lewis
50.0	508.2	Consol Gas Company	Active	Lewis
50.0	591.3	Key Oil Company	Active	Lewis
50.0	995.2	Prior, Ferrell L	Inactive	Lewis
50.1	448.8	Interstate Energy, Inc.	Inactive	Lewis
50.2	275.8	Consol Gas Company	Active	Lewis
50.4	963.6	Consol Gas Company	Active	Lewis
50.5	1,168.9	Operator Unknown	Inactive	Lewis
50.6	819.4	Key Oil Company	Active	Lewis
50.8	144.7	Key Oil Company	Active	Lewis
50.8	389.5	Consol Gas Company	Never Issued/drilled	Lewis

**APPENDIX J-1**

**Gas and Oil Wells within 0.25 Mile of the Mountain Valley Project**

<b>MP</b>	<b>Distance from Centerline (feet)</b>	<b>Operator</b>	<b>Well Status</b>	<b>County</b>
50.9	864.8	Key Oil Company	Active	Lewis
51.0	244.9	Alamco, Inc/	Inactive	Lewis
51.0	520.7	Key Oil Company	Active	Lewis
51.3	549.0	Key Oil Company	Active	Lewis
51.3	583.5	Key Oil Company	Active	Lewis
51.4	1,180.6	Key Oil Company	Active	Lewis
51.6	1,321.5	Stalnaker Energy Corporation	Active	Lewis
51.6	316.9	Stalnaker Energy Corporation	Active	Lewis
51.8	1,152.8	Stalnaker Energy Corporation	Active	Lewis
52.0	374.4	Stalnaker Energy Corporation	Active	Lewis
52.2	95.5	Operator Unknown	Inactive	Lewis
52.1	602.1	Stalnaker Energy Corporation	Active	Lewis
52.2	1,028.0	Ross and Wharton Gas Company, Inc.	Active	Lewis
52.5	131.6	Ross and Wharton Gas Company, Inc.	Active	Lewis
52.6	160.4	Consol Gas Company	Active	Lewis
52.7	320.2	Stalnaker Energy Corporation	Active	Lewis
53.1	1,343.8	Consol Gas Company	Active	Lewis
53.0	455.9	Chesapeake Appalachia, LLC	Active	Lewis
53.2	129.4	DB Exploration, LLC	Active	Lewis
53.2	1,268.2	DB Exploration, LLC	Active	Lewis
53.4	426.6	Chesapeake Appalachia, LLC	Active	Lewis
53.6	891.8	Dominion Transmission, Inc.	Inactive	Lewis
53.7	903.2	Operator Unknown	Inactive	Lewis
53.9	212.4	Consol Gas Company	Active	Lewis
54.1	378.7	Stalnaker Energy Corporation	Active	Lewis
54.2	1,223.4	Energy Corporation of America	Never Issued/drilled	Lewis
54.4	347.4	Consol Gas Company	Active	Lewis
54.4	533.9	Energy Corporation of America	Never Issued/drilled	Lewis
54.4	1,391.8	Rubin Resources Co.	Active	Lewis
54.6	910.4	Stalnaker Energy Corporation	Active	Lewis
54.7	417.6	Consol Gas Company	Active	Lewis
54.7	798.0	Tapo Energy, Inc.	Active	Lewis
54.9	331.0	Consol Gas Company	Active	Lewis
55.0	1,287.3	Consol Gas Company	Active	Lewis
55.1	1,300.5	Dominion Transmission, Inc.	Inactive	Lewis
55.2	346.0	Consol Gas Company	Active	Lewis
55.2	365.1	Consol Gas Company	Active	Lewis
55.3	1,237.9	Murvin & Meier Oil Co.	Inactive	Lewis
55.6	273.5	Murvin & Meier Oil Co.	Inactive	Lewis
55.8	1,229.8	S & R Gas Ventures, Ltd	Active	Lewis
55.9	313.3	S & R Gas Ventures, Ltd	Active	Lewis
56.0	346.2	S & R Gas Ventures, Ltd	Active	Lewis
56.2	372.6	S & R Gas Ventures, Ltd	Active	Lewis

**APPENDIX J-1**

**Gas and Oil Wells within 0.25 Mile of the Mountain Valley Project**

<b>MP</b>	<b>Distance from Centerline (feet)</b>	<b>Operator</b>	<b>Well Status</b>	<b>County</b>
56.2	652.3	Geo Energy, LLC	Active	Lewis
56.5	733.4	Energy Corporation of America	Never Issued/drilled	Lewis
56.5	795.2	Rockey Drilling Co.	Inactive	Lewis
56.7	1,273.4	Braxton Oil & Gas Corp.	Active	Lewis
56.8	267.8	Energy Corporation of America	Active	Lewis
57.0	1,078.7	Energy Corporation of America	Never Issued/drilled	Lewis
57.1	1,037.0	Geo Energy, LLC	Active	Lewis
57.2	718.1	Geo Energy, LLC	Active	Lewis
57.5	332.5	Diversified Resources, Inc.	Active	Lewis
57.6	1,255.0	Exco Resources (Pa), LLC	Active	Lewis
58.0	599.3	Exco Resources (Pa), LLC	Active	Lewis
58.3	1,337.2	Rogers & Son	Active	Lewis
58.5	1,306.8	Operator Unknown	Inactive	Lewis
58.6	436.6	Rogers & Son	Active	Lewis
58.7	1,214.1	Petroleum Resources, Inc.	Active	Lewis
59.0	1,295.7	R & R Oil and Gas, LLC	Active	Lewis
59.3	1030.3	Dorward Energy Corporation	Active	Lewis
59.6	493.0	Stalnaker Energy Corporation	Active	Lewis
59.6	1,409.2	Operator Unknown	Never Issued/drilled	Lewis
59.7	482.3	Stalnaker Energy Corporation	Active	Lewis
59.9	88.2	Operator Unknown	Inactive	Lewis
60.6	519.8	Consol Gas Company	Active	Lewis
60.9	661.9	Dominion Transmission, Inc.	Inactive	Lewis
61.3	923.0	Consol Gas Company	Active	Lewis
61.6	691.2	Consol Gas Company	Active	Lewis
62.0	354.7	Geo Energy, LLC	Active	Lewis
62.3	721.8	Dominion Transmission, Inc.	Inactive	Lewis
62.7	385.2	Big Buck Energy Oil & Gas	Inactive	Lewis
62.7	747.2	Geo Energy, LLC	Active	Lewis
63.1	375.3	Dominion Transmission, Inc.	Inactive	Lewis
63.3	1,063.0	Geo Energy, LLC	Active	Lewis
63.8	991.1	Operator Unknown	Inactive	Lewis
64.0	1,121.9	Tapo Energy, Inc.	Inactive	Lewis
68.2	307.6	Operator Unknown	Inactive	Braxton
68.4	562.0	Operator Unknown	Inactive	Braxton
68.5	129.5	Operator Unknown	Inactive	Braxton
69.0	260.7	Operator Unknown	Inactive	Braxton
69.1	819.2	Operator Unknown	Inactive	Braxton
69.8	564.2	Baker, J C & Sons, Inc.	Active	Braxton
70.7	468.7	Apollo Petroleum	Inactive	Braxton
70.7	585.9	Ross and Wharton Gas Company, Inc.	Active	Braxton
70.7	1,070.9	Devon Energy Corporation(Nevada)	Inactive	Braxton
71.0	344.0	Ross and Wharton Gas Company, Inc.	Active	Braxton

**APPENDIX J-1**

**Gas and Oil Wells within 0.25 Mile of the Mountain Valley Project**

<b>MP</b>	<b>Distance from Centerline (feet)</b>	<b>Operator</b>	<b>Well Status</b>	<b>County</b>
71.0	358.1	Baker, J C & Sons, Inc.	Active	Braxton
71.6	70.5	Baker, J C & Sons, Inc.	Active	Braxton
71.8	1,141.2	Baker, J C & Sons, Inc.	Active	Braxton
71.9	395.7	Baker, J C & Sons, Inc.	Active	Braxton
72.1	275.4	Baker, J C & Sons, Inc.	Active	Braxton
72.1	1,250.1	Baker, J C & Sons, Inc.	Active	Braxton
72.3	516.3	Operator Unknown	Inactive	Braxton
72.4	551.9	Baker, J C & Sons, Inc.	Active	Braxton
72.8	1,065.2	Operator Unknown	Inactive	Braxton
73.2	831.6	Baker, J C & Sons, Inc.	Never Issued/drilled	Braxton
73.2	1,344.3	Baker, J C & Sons, Inc.	Active	Braxton
73.5	900.9	Baker, J C & Sons, Inc.	Active	Braxton
73.8	1,059.6	Baker, J C & Sons, Inc.	Active	Braxton
74.4	1090.1	Baker, J C & Sons, Inc.	Active	Braxton
74.5	211.6	Baker, J C & Sons, Inc.	Inactive	Braxton
87.7	880.3	Energy Corporation of America	Active	Webster
88.4	1,195.3	Operator Unknown	Inactive	Webster
90.0	329.8	Cabot Oil & Gas Corporation	Inactive	Webster
105.1	1256.3	OPERATOR UNKNOWN	Inactive	Webster
113.1	827.8	Continental Reserves Oil Co.	Never Issued/drilled	Nicholas
114.2	170.3	Continental Reserves Oil Co.	Never Issued/drilled	Nicholas
114.9	153.5	Continental Reserves Oil Co.	Never Issued/drilled	Nicholas
114.9	1,180.6	Continental Reserves Oil Co.	Never Issued/drilled	Nicholas
120.8	1,039.3	Triana Energy, LLC	Never Issued/drilled	Nicholas
137.3	1,039.7	Columbia Natural Resources, LLC	Inactive	Greenbrier

Source: WVDEP, 2015; VDMME, 2015c

*This page intentionally left blank.*

**APPENDIX J-2**

**Oil and Gas Wells**

**Equitrans Expansion Project**

*This page intentionally left blank*



**APPENDIX J-2**

**Gas and Oil Wells Within 0.25 Mile of the Equitrans Expansion Project**

<b>Feature</b>	<b>MP</b>	<b>Near Feature</b>	<b>API Number</b>	<b>Status</b>	<b>County</b>	<b>Type</b>	<b>Distance (ft)</b>	<b>Direction</b>
H-158/ M-80	0	ATWS	059-25617	Active	Greene	Oil & Gas, Coal	967	W
	0	ATWS	059-25585	Active	Greene	Oil & Gas, Coal	947	W
	0	ATWS	059-26423	Proposed But Never Materialized	Greene	Oil & Gas, Coal	975	W
	0	ATWS	059-25585	Active	Greene	Oil & Gas, Coal	947	W
	0.2	Temporary Construction ROW	059-01984	Abandoned	Greene	Oil & Gas, Coal	1,083	E
	0.2	ATWS	059-01939	PADEP Orphan List	Greene	Oil & Gas, Coal	1,263	NW
	0.2	Temporary Construction ROW	059-02020	Abandoned	Greene	Oil & Gas, Coal	1,083	E
H-305	0	Temporary Construction ROW	059-01984	Abandoned	Greene	Oil & Gas, Coal	954	E
	0.1	Access Road ROW	059-01939	PADEP Orphan List	Greene	Oil & Gas, Coal	1,044	W
	0.1	Access Road ROW	059-21800	Active	Greene	Oil & Gas, Coal	1,057	N
	0.1	Access Road ROW	059-02124	DEP Abandoned List	Greene	Oil & Gas, Coal	1,034	NW
	0	Temporary Construction ROW	059-02020	Abandoned	Greene	Oil & Gas, Coal	954	E
H-316	0.2	Permanent Operation ROW	059-01984	Abandoned	Greene	Oil & Gas, Coal	0	W
	0.2	Permanent Operation ROW	059-02020	Abandoned	Greene	Oil & Gas, Coal	0	W
	0.3	Temporary Construction ROW	059-01860	PADEP Abandoned List	Greene	Oil & Gas, Coal	115	N
	0.7	Temporary Construction ROW	059-02016	Active	Greene	Oil & Gas, Unavailable	0	W
	1.0	Temporary Construction ROW	059-24135	Active	Greene	Oil & Gas, Coal	1,049	N
	1.2	Permanent Operation ROW	059-01241	Active	Greene	Oil & Gas, Coal	765	S
	1.4	Access Road ROW	059-22604	Plugged OG Well	Greene	Oil & Gas, Coal	417	NW

**APPENDIX J-2**

**Gas and Oil Wells Within 0.25 Mile of the Equitrans Expansion Project**

<b>Feature</b>	<b>MP</b>	<b>Near Feature</b>	<b>API Number</b>	<b>Status</b>	<b>County</b>	<b>Type</b>	<b>Distance (ft)</b>	<b>Direction</b>
H-316	2.7	Permanent Operation ROW	059-21048	Plugged OG Well	Greene	Oil & Gas, Coal	321	E
	3.0	ATWS	059-24955	Active	Greene	Oil & Gas, Coal	82	SW
	2.7	Access Road ROW	059-25009	Active	Greene	Oil & Gas, Coal	628	N
	2.7	Permanent Operation ROW	059-24498	Operator Reported Not Drilled	Greene	Oil & Gas, Coal	309	W
	1.6	Temporary Construction ROW	059-23780	Operator Reported Not Drilled	Greene	Oil & Gas, Coal	0	W
	0.0	ATWS	059-21887	Active	Greene	Oil & Gas, Coal	575	NE
	1.5	Access Road ROW	059-23778	Operator Reported Not Drilled	Greene	Oil & Gas, Coal	1,196	N
	1.6	Access Road ROW	059-23782	Operator Reported Not Drilled	Greene	Oil & Gas, Coal	563	S
	1.6	Access Road ROW	059-25243	Operator Reported Not Drilled	Greene	Oil & Gas, Coal	563	S
	3.0	ATWS	059-24956	Operator Reported Not Drilled	Greene	Oil & Gas, Coal	1,256	SW
	1.7	Access Road ROW	059-23779	Operator Reported Not Drilled	Greene	Oil & Gas, Coal	1,132	E
	1.8	Temporary Construction ROW	059-23781	Operator Reported Not Drilled	Greene	Oil & Gas, Coal	91	SW
	1.6	Permanent Operation ROW	059-22618	Operator Reported Not Drilled	Greene	Oil & Gas, Coal	0	W
	0.0	ATWS	059-21991	Active	Greene	Oil & Gas, Coal	722	NE
	1.5	Access Road ROW	059-24133	Active	Greene	Oil & Gas, Coal	992	N
	0.0	ATWS	059-26686	Proposed But Never Materialized	Greene	Oil & Gas, Coal	542	E
H-318								
	0.6	Access Road ROW	003-00209	Plugged OG Well	Allegheny	Oil & Gas, Non-Coal	521	S
	0.0	Access Road ROW	003-00435	Plugged OG Well	Allegheny	Oil & Gas, Non-Coal	198	S
	1.4	ATWS	003-00733	Plugged OG Well	Allegheny	Oil & Gas, Non-Coal	1093	SW
2.3	ATWS	003-00783	Plugged OG Well	Allegheny	Oil & Gas, Non-Coal	336	W	

**APPENDIX J-2**

**Gas and Oil Wells Within 0.25 Mile of the Equitrans Expansion Project**

<b>Feature</b>	<b>MP</b>	<b>Near Feature</b>	<b>API Number</b>	<b>Status</b>	<b>County</b>	<b>Type</b>	<b>Distance (ft)</b>	<b>Direction</b>
	2.5	Temporary Construction ROW	003-01077	PADEP Plugged	Allegheny	Oil & Gas, Non-Coal	412	W
	0.0	H318_PermanentSite	003-20017	Active	Allegheny	Oil & Gas, Non-Coal	1,191	NW
	0.0	H318_PermanentSite	003-20017	Active	Allegheny	Oil & Gas, Non-Coal	1,191	NW
	0.6	Access Road ROW	003-20020	Active	Allegheny	Oil & Gas, Non-Coal	352	E
	0.0	Access Road ROW	003-20022	Active	Allegheny	Oil & Gas, Non-Coal	1,223	N
	0.0	Access Road ROW	003-20023	Active	Allegheny	Oil & Gas, Non-Coal	79	S
	0.0	Access Road ROW	003-20026	Active	Allegheny	Oil & Gas, Non-Coal	10	W
	0.1	Temporary Construction ROW	003-20078	Plugged OG Well	Allegheny	Oil & Gas, Non-Coal	962	W
	0.2	Access Road ROW	003-20792	Active	Allegheny	Oil & Gas, Coal	764	S
	0.0	Access Road ROW	003-20803	Plugged OG Well	Allegheny	Oil & Gas, Coal	1,245	N
	0.0	Access Road ROW	003-20804	Plugged OG Well	Allegheny	Oil & Gas, Coal	1,290	N
	1.2	ATWS	003-22051	Active	Allegheny	Oil & Gas, Coal	307	NE
	2.2	ATWS	003-22053	Active	Allegheny	Oil & Gas, Coal	718	SW
	end	Access Road	125-00465	Plugged OG Well	Washington	Oil & Gas, Coal	951	SW
	3.4	Temporary Construction ROW	125-00666	Active	Washington	Oil & Gas, Coal	546	SW
	end	ATWS	125-00685	Active	Washington	Oil & Gas, Coal	100	NW
	end	ATWS	125-00686	Active	Washington	Oil & Gas, Coal	103	NW
	3.7	Temporary Construction ROW	125-00687	Active	Washington	Oil & Gas, Coal	266	NE
	end	ATWS	125-00688	Active	Washington	Oil & Gas, Coal	962	N
	end	Access Road	125-00689	Plugged OG Well	Washington	Oil & Gas, Coal	706	S
	3.7	Temporary Construction ROW	125-00691	Active	Washington	Oil & Gas, Coal	568	W

**APPENDIX J-2**

**Gas and Oil Wells Within 0.25 Mile of the Equitrans Expansion Project**

Feature	MP	Near Feature	API Number	Status	County	Type	Distance (ft)	Direction
	3.4	Temporary Construction ROW	125-00692	Active	Washington	Oil & Gas, Coal	1,088	NW
	3.1	Access Road ROW	125-27645	Active	Washington	Oil & Gas, Coal	986	S
	3.1	Access Road ROW	125-27646	Active	Washington	Oil & Gas, Coal	996	S
	3.1	Access Road ROW	125-27647	Active	Washington	Oil & Gas, Coal	1,006	S
	3.1	Access Road ROW	125-27648	Active	Washington	Oil & Gas, Coal	1,016	S
	3.1	Access Road ROW	125-27649	Active	Washington	Oil & Gas, Coal	1,026	S
	3.1	Access Road ROW	125-27649	Active	Washington	Oil & Gas, Coal	1,026	S
H-319	0	ATWS	103-02535	Active	Wetzel	Gas	118	E
	0.1	ATWS	103-02384	Active	Wetzel	Gas	1,210	NW
Pratt CS	Area within 0.25 mile of Project Features <u>a/</u>	Pratt CS	059-01984	Abandoned	Greene	Oil & Gas, Coal	1,170	NE
		Pratt CS	059-02020	Abandoned	Greene	Oil & Gas, Coal	1,170	NE
Redhook CS		Redhook CS	059-01939	PADEP Orphan List	Greene	Oil & Gas, Coal	1,300	W
		Redhook CS	059-01860	PADEP Abandoned List	Greene	Oil & Gas, Coal	921	E
		Redhook CS	059-01984	Abandoned	Greene	Oil & Gas, Coal	515	E
		Redhook CS	059-02020	Abandoned	Greene	Oil & Gas, Coal	515	E
Webster Inter-connect		H306 Tap	103-02535	Active	Wetzel	Gas	193	E
	Access Road ROW	103-02384	Active	Wetzel	Gas	1,240	NW	
	ATWS	103-02422	Never Drilled	Wetzel	N/A	1,191	E	
	ATWS	103-02524	Active	Wetzel	Gas	1,097	W	

Sources: PADEP 2016; WVDEP 2016.

a/ No wells identified within 0.25 mi of Mobley Interconnect; Oil and Gas wells located near taps accounted for above.

ATWS = additional temporary workspaces

CS = Compressor Station

N/A = Not Available

OG = oil/gas

PADEP = Pennsylvania Department of Environmental Protection

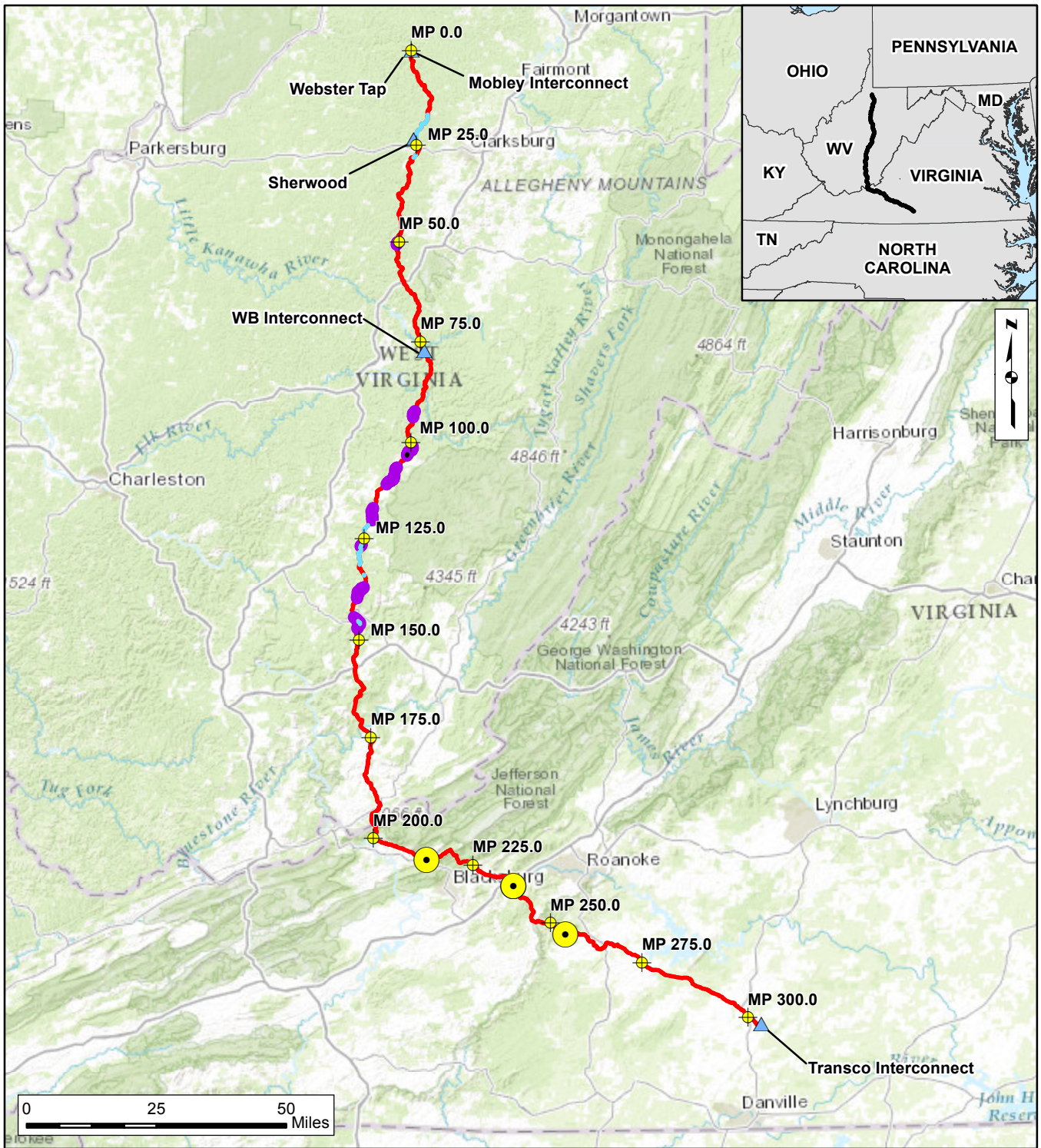
ROW = right-of-way

**APPENDIX J-3**

**Mined Areas**

**Mountain Valley Project**

*This page intentionally left blank*



- Proposed Pipeline Route
- ▲ Meter Station/Interconnect
- USGS Mineral Resource Database Mining Location
- Underground Mining Limits
- West Virginia Abandoned Mines
- West Virginia Underground Mines in Permit Database

**Appendix J-3**  
**Mountain Valley Project**

Mined Areas in Proximity to  
the Mountain Valley Project

*This page intentionally left blank*

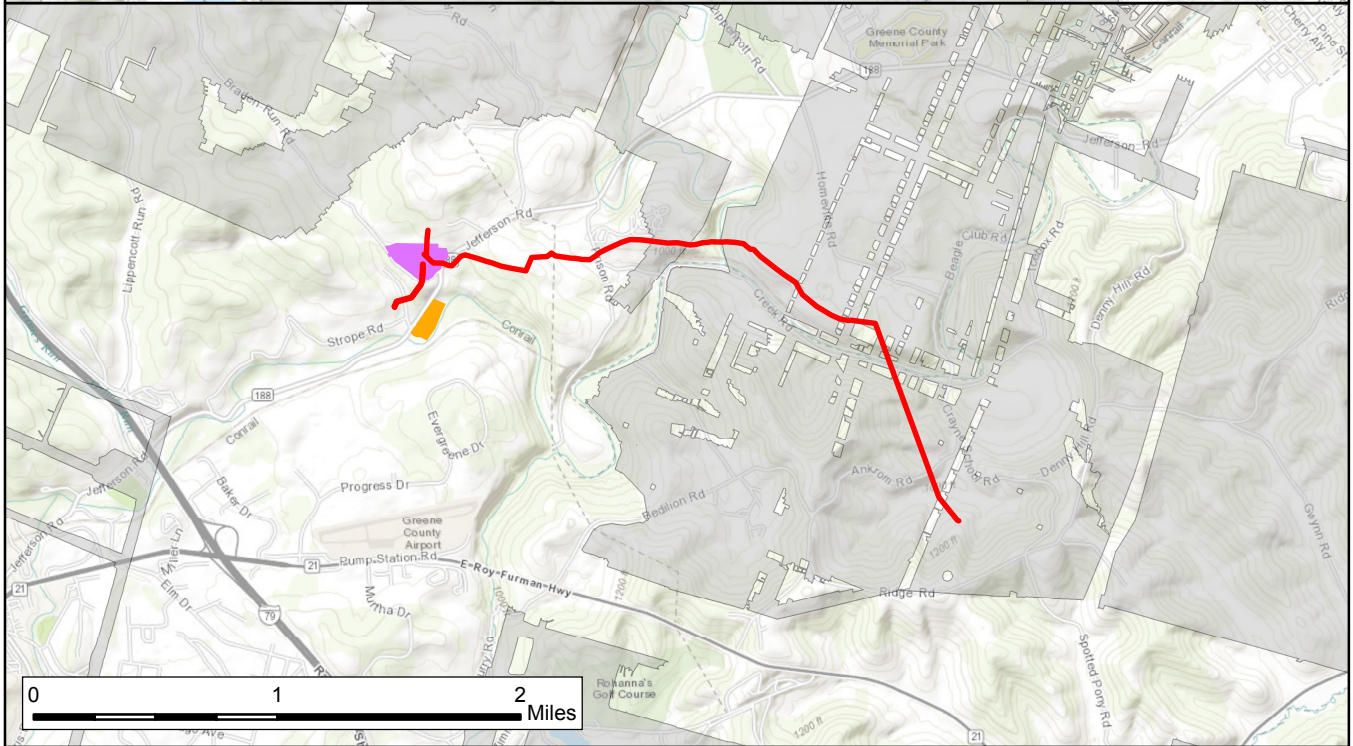
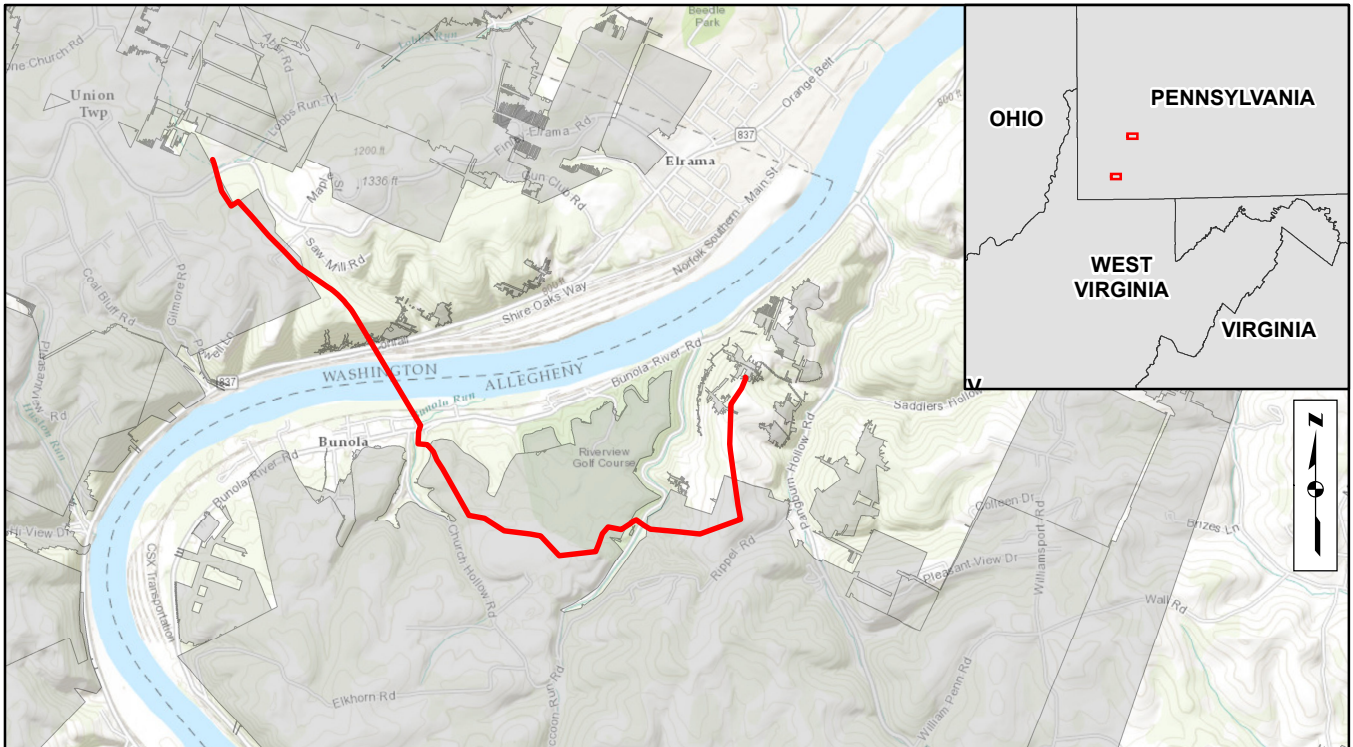






**APPENDIX J-4**

**Mined Areas**

**Equitrans Expansion Project**

*This page intentionally left blank*



-  Proposed Pipeline Route
-  Mined Area
-  Pratt Compressor Station
-  Redhook Compressor Station

**Appendix J-4**  
**Equitrans Expansion Project**

Mined Areas in Proximity to  
 the Mountain Valley Project

*This page intentionally left blank*