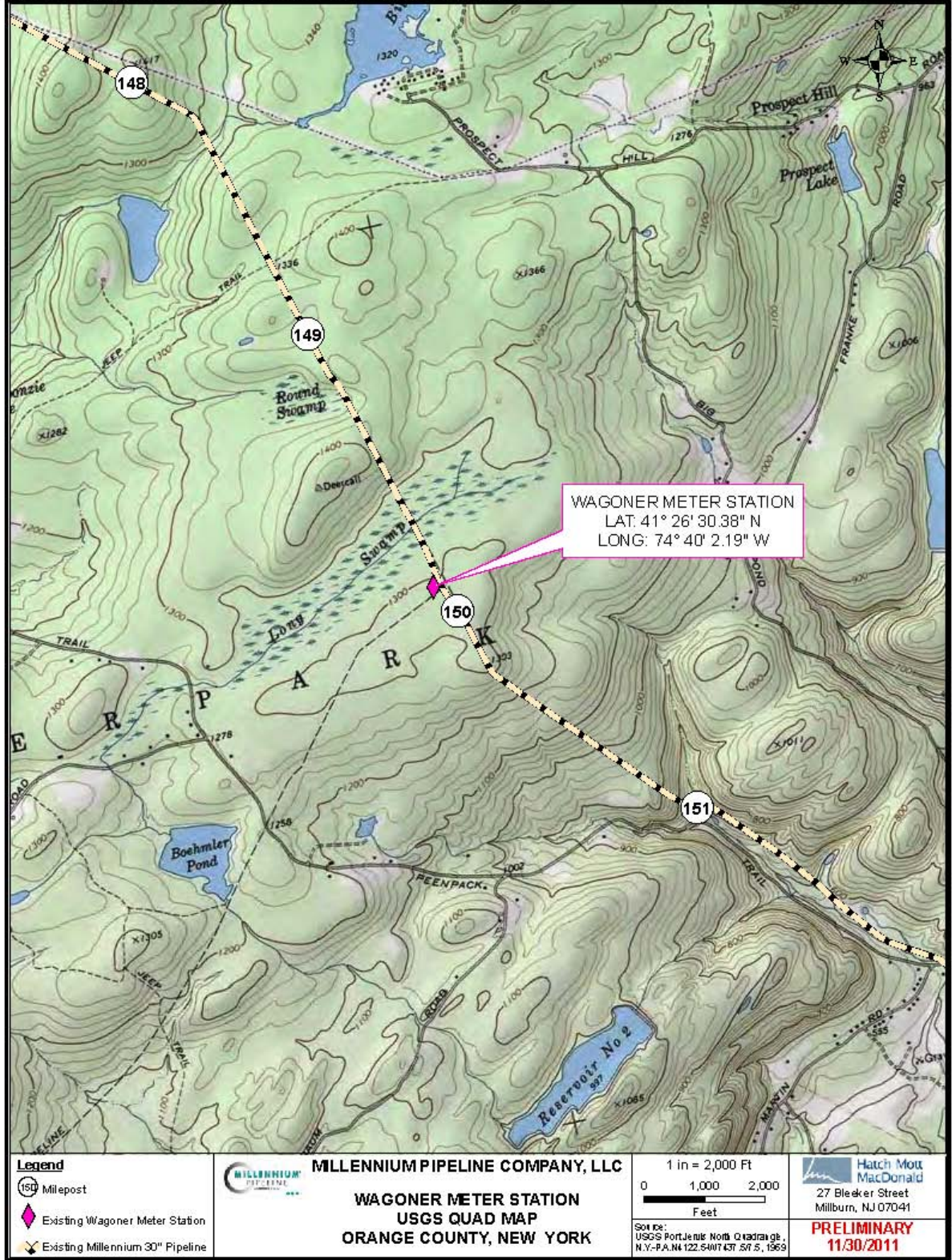


Appendix A

Appendix B



Map Document: p:\GIS\Projects\Wills\1\Map\Wagoner_0811_FERC.mxd, 11/29/2011 - 4:11:12 PM

Legend	
	Milepost
	Existing Wagoner Meter Station
	Existing Millennium 30" Pipeline

MILLENNIUM PIPELINE COMPANY, LLC

**WAGONER METER STATION
USGS QUAD MAP
ORANGE COUNTY, NEW YORK**

1 in = 2,000 Ft

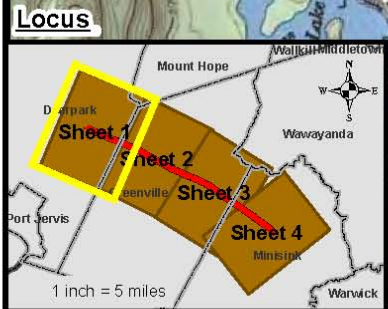
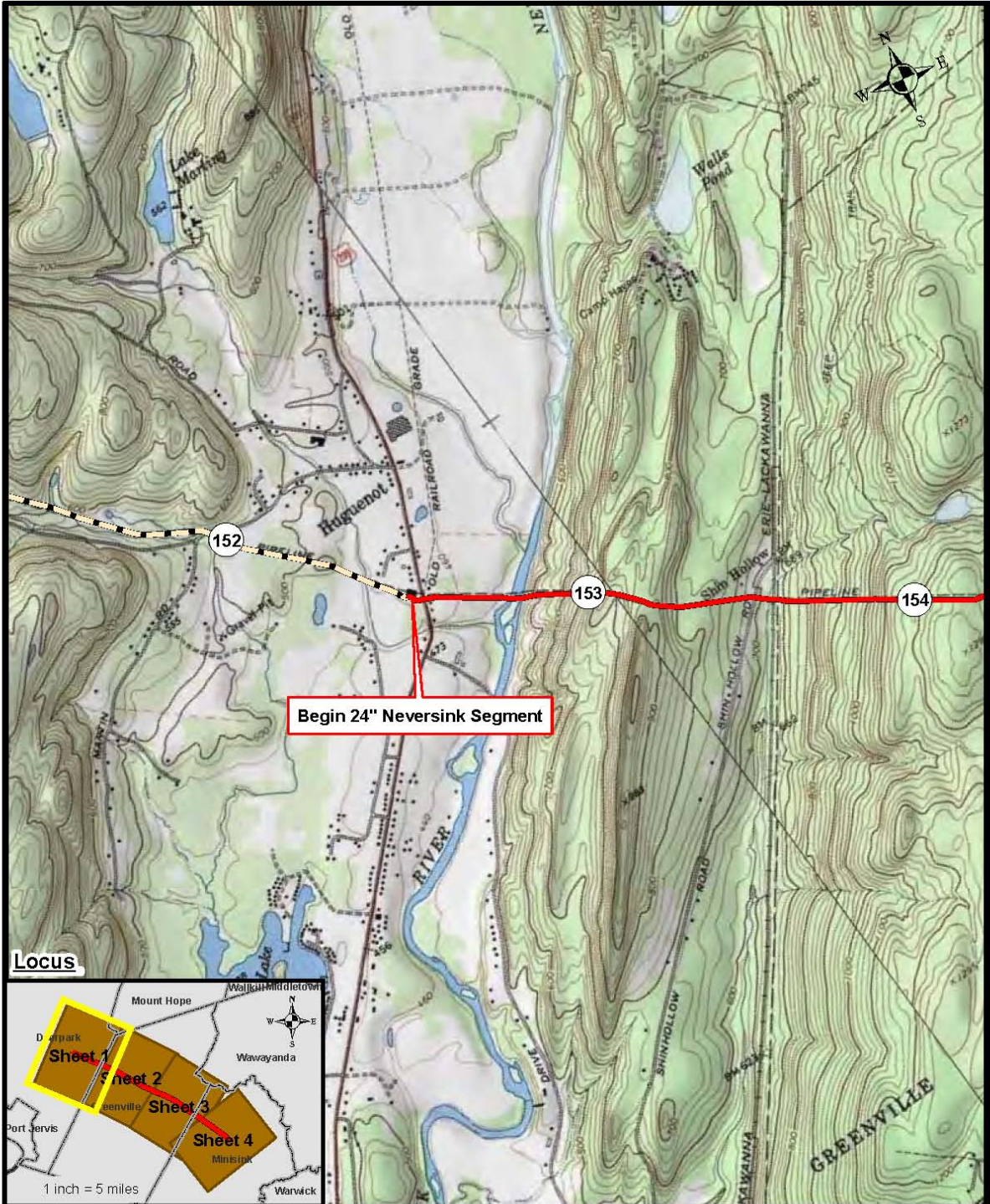
0 1,000 2,000

Feet

Source:
USGS PortJervis North Quadrangle,
N.Y.-P.A. N4122-S407437-SR-S, 1963

Hatch Mott MacDonald
27 Bleeker Street
Millburn, NJ 07041

**PRELIMINARY
11/30/2011**



	Milepost
	Existing Millennium 24" Neversink Segment
	Existing Millennium 30" Pipeline

MILLENNIUM PIPELINE COMPANY, LLC
24" 7.5 MILE NEVERSINK SEGMENT
USGS QUAD MAP
SHEET 1 OF 4
ORANGE COUNTY, NEW YORK

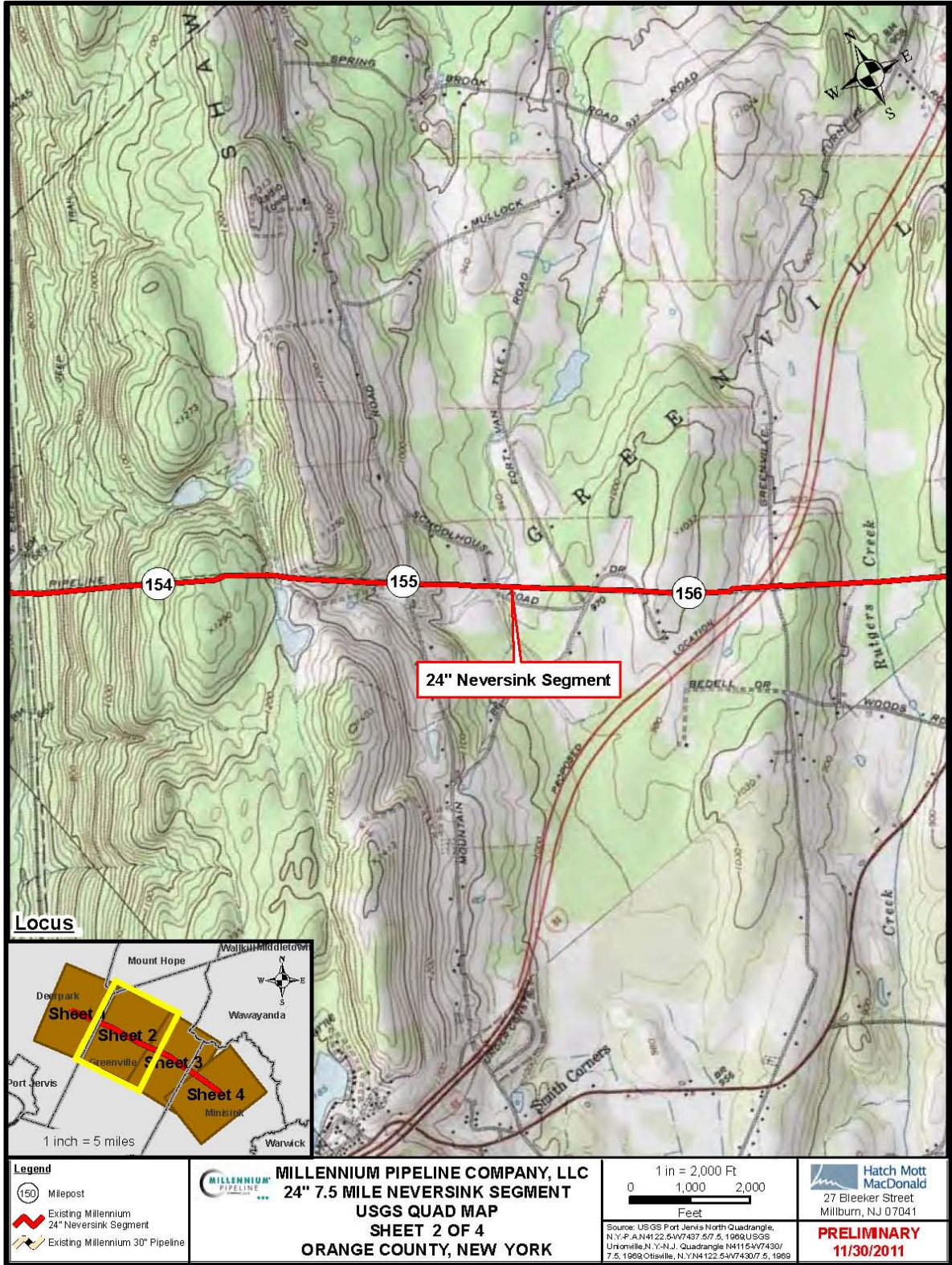
1 in = 2,000 Ft
 0 1,000 2,000
 Feet

Source: USGS Port Jervis North Quadrangle, N.Y.P. A N4122-5W7437-57.5, 1969 USGS
 Unionville, N.Y.-N.J. Quadrangle N4115-W7430/7.5, 1969; Otisville, N.Y. N4122-5W7430/7.5, 1969

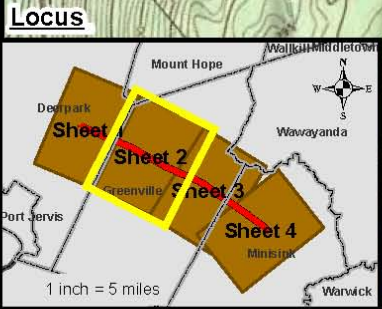
Hatch Mott MacDonald
 27 Bleeker Street
 Millburn, NJ 07041

PRELIMINARY
11/30/2011

Map Document: (D:\GIS Projects\Millennium\GIS\PHASE_1\Maps\Neversink_9.5x11_FERC.mxd) 11/29/2011 - 5:12:08 PM



Map Document: (D:\GIS Projects\Millennium\GIS\PHASE_1\Maps\Neversink_9.5x11_FERC.mxd) 11/29/2011 - 5:12:08 PM



	Milepost
	Existing Millennium 24" Neversink Segment
	Existing Millennium 30" Pipeline

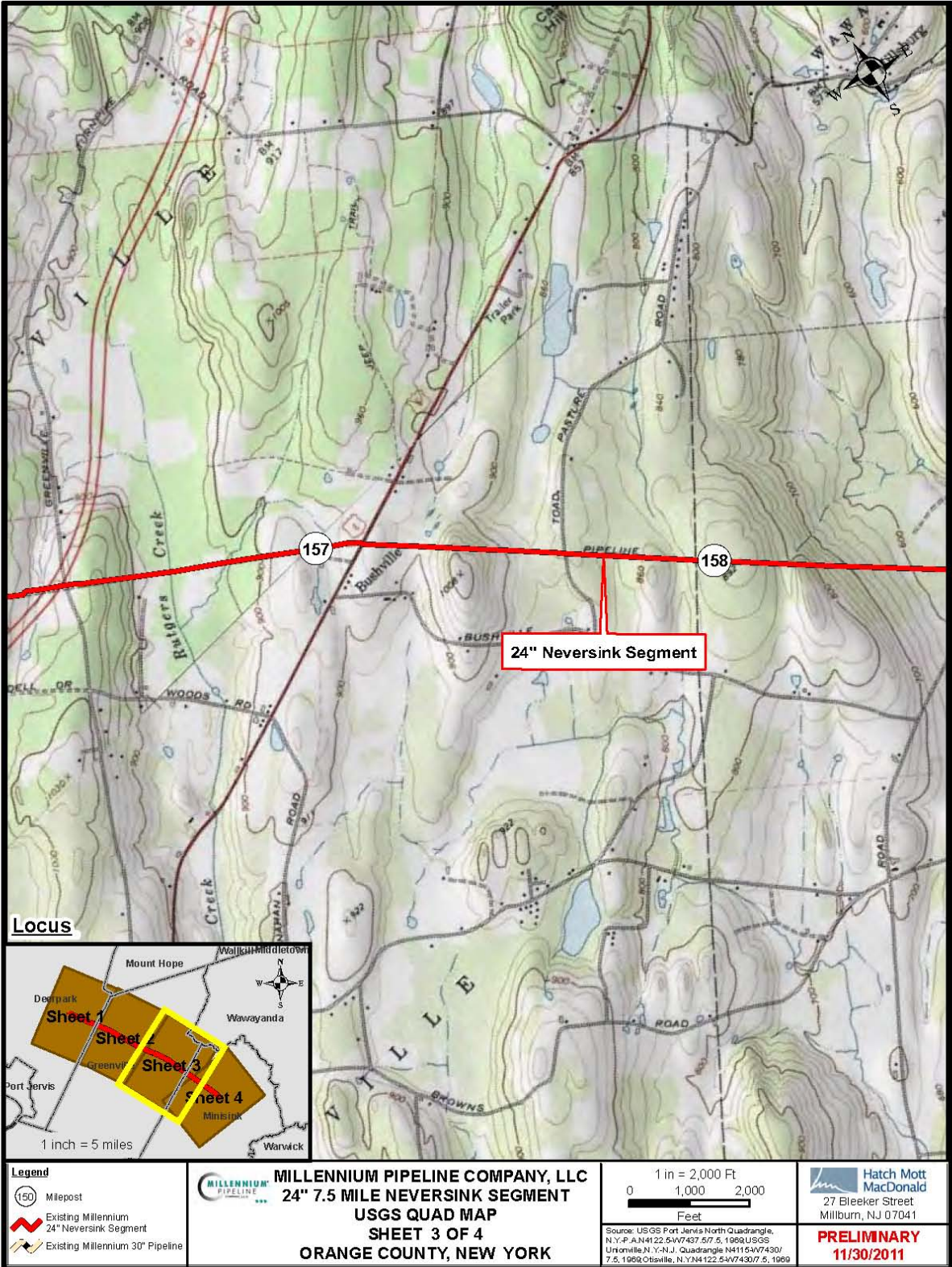
MILLENNIUM PIPELINE COMPANY, LLC
24" 7.5 MILE NEVERSINK SEGMENT
USGS QUAD MAP
SHEET 2 OF 4
ORANGE COUNTY, NEW YORK

1 in = 2,000 Ft
 0 1,000 2,000
 Feet

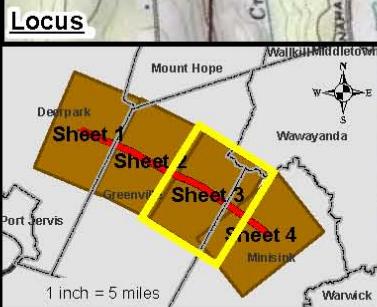
Source: USGS Port Jervis North Quadrangle, N.Y.P. A N4122.5W7437.5T 5, 1969 USGS
 Unionville, N.Y.-N.J. Quadrangle N4115-W7430/7.5, 1969; Otisville, N.Y. N4122.5W7430/7.5, 1969

Hatch Mott MacDonald
 27 Bleeker Street
 Millburn, NJ 07041

PRELIMINARY
11/30/2011

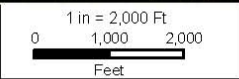


Map Document: (D:\GIS Projects\Millennium\GIS\PHASE_1\Maps\Neversink_9.5x11_FERC.mxd) 11/29/2011 - 5:12:08 PM



	Milepost
	Existing Millennium 24" Neversink Segment
	Existing Millennium 30" Pipeline

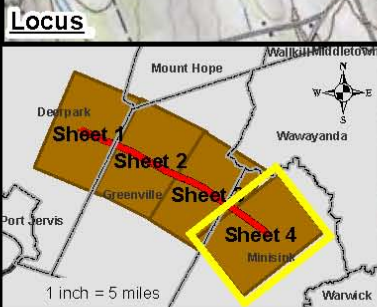
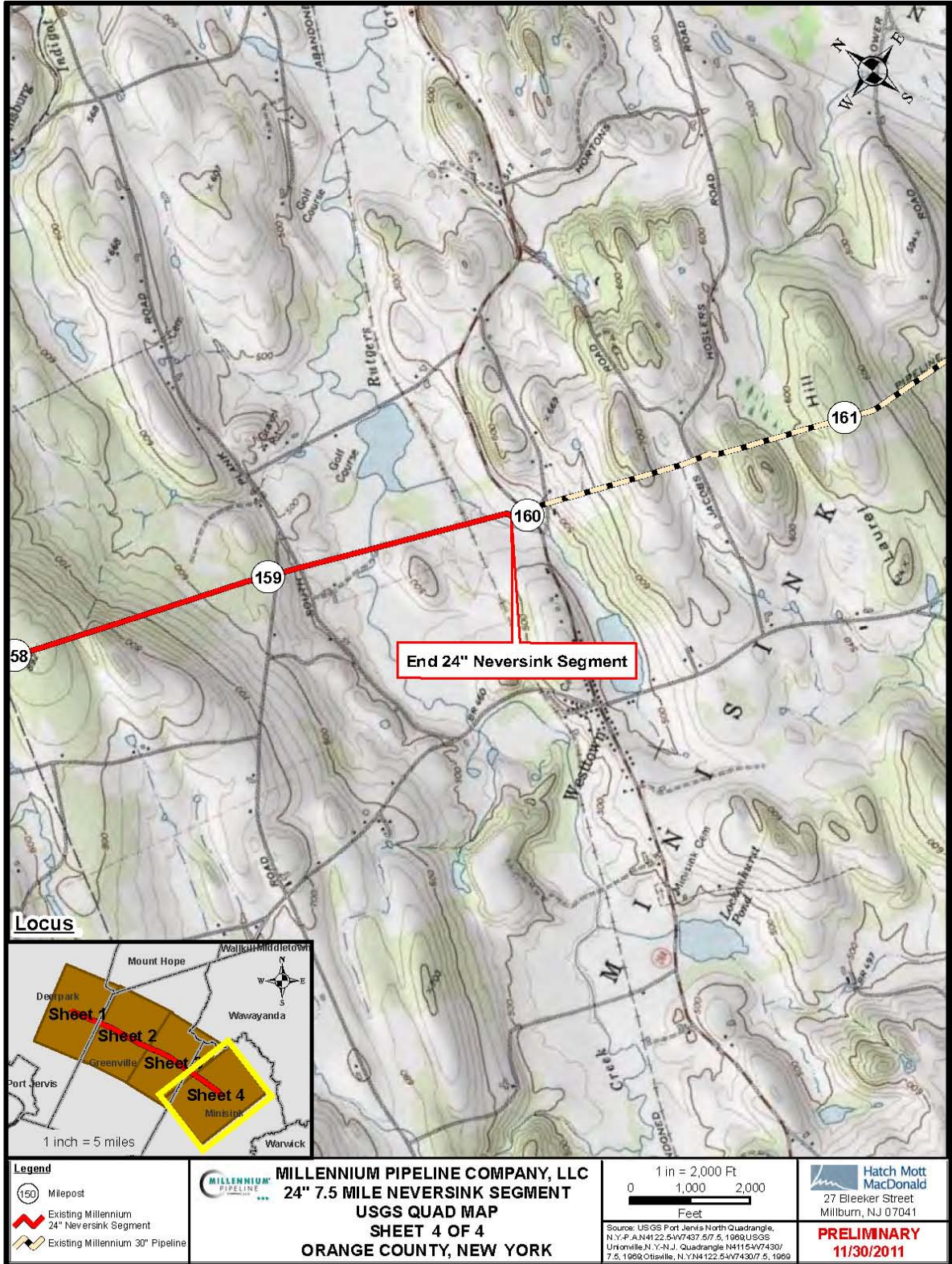
MILLENNIUM PIPELINE COMPANY, LLC
24" 7.5 MILE NEVERSINK SEGMENT
USGS QUAD MAP
SHEET 3 OF 4
ORANGE COUNTY, NEW YORK



Source: USGS Port Jervis North Quadrangle, N.Y.P. AN4122.5W74307.5, 1969 USGS Unionville, N.Y.-N.J. Quadrangle N4115-W74307.5, 1969 Otisville, N.Y. N4122.5W74307.5, 1969

Hatch Mott MacDonald
 27 Bleeker Street
 Millburn, NJ 07041

PRELIMINARY
11/30/2011



	Milepost
	Existing Millennium 24" Neversink Segment
	Existing Millennium 30" Pipeline

MILLENNIUM PIPELINE COMPANY, LLC
24" 7.5 MILE NEVERSINK SEGMENT
USGS QUAD MAP
SHEET 4 OF 4
ORANGE COUNTY, NEW YORK

1 in = 2,000 Ft
 0 1,000 2,000
 Feet

Hatch Mott MacDonald
 27 Bleeker Street
 Millburn, NJ 07041
PRELIMINARY
11/30/2011

Map Document: (D:\GIS Projects\Millennium\GIS\PHASE_1\Maps\Neversink_9.5x11_FERC.mxd) 11/29/2011 - 5:12:08 PM

Source: USGS Port Jervis North Quadrangle, N.Y.P. A N4122.5W7430.5, 1969 USGS Unionville, N.Y.-N.J. Quadrangle N4115W7430/7.5, 1969 Otisville, N.Y. N4122.5W7430/7.5, 1969