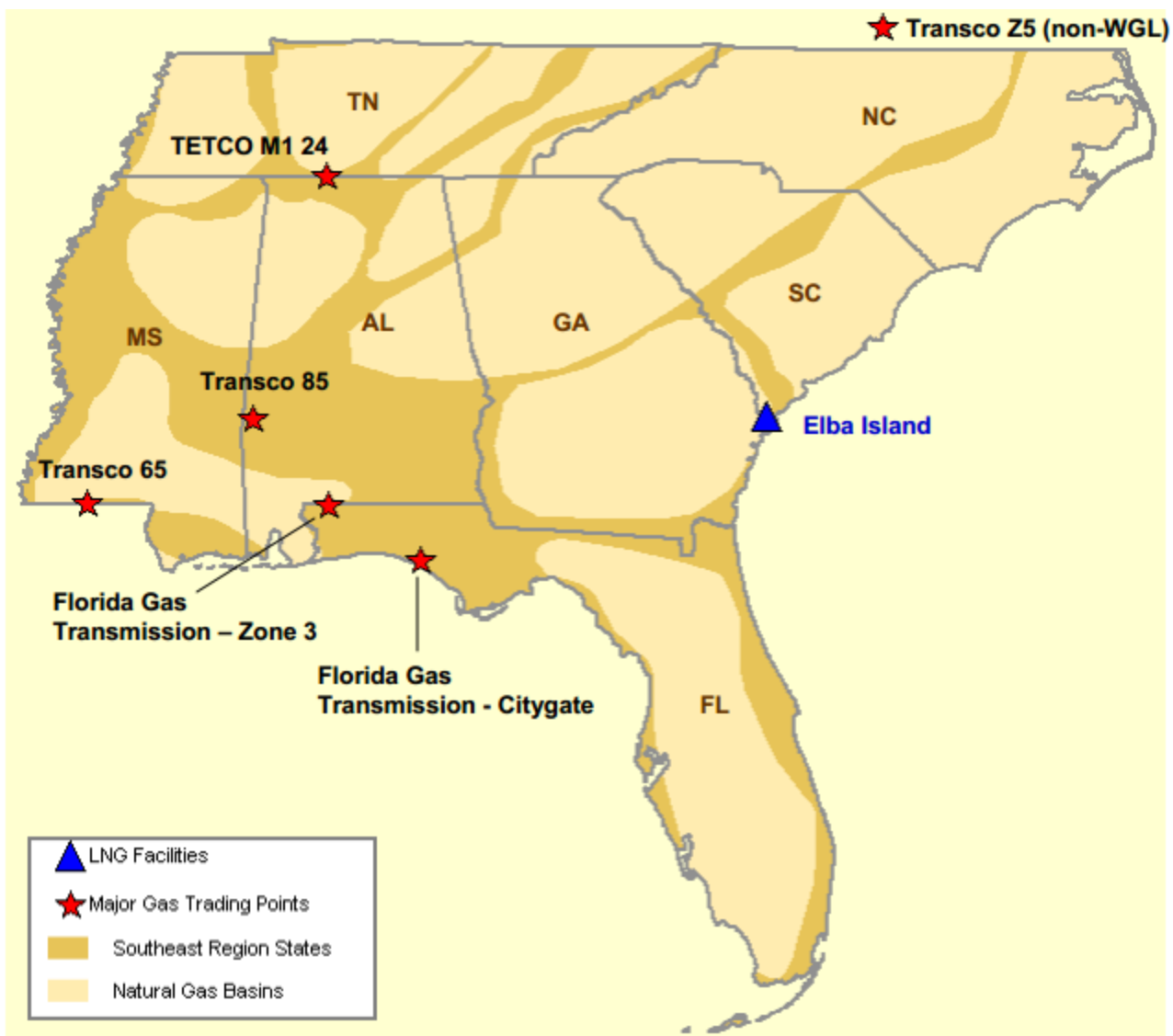


Southeast Natural Gas Region

Federal Energy Regulatory Commission Market Assessments



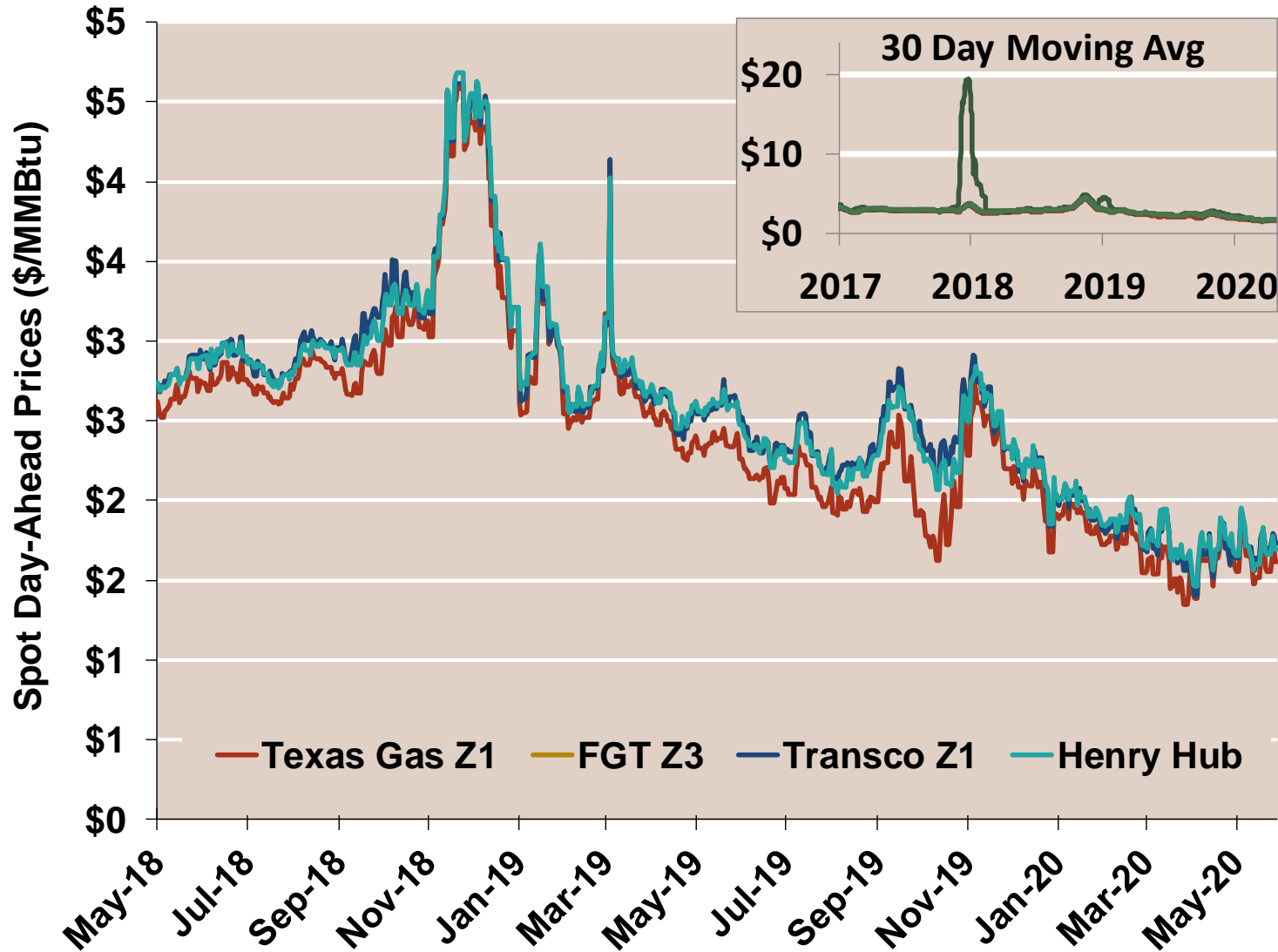
**Southeast Day-Ahead Prices
Averaged Annually/Seasonally**

Federal Energy Regulatory Commission **Market Assessments**

	Average Day Ahead Prices (\$/MMBtu)	FGT Z3	Texas Gas Z1	TZ1	Henry Hub
2017	Annual	2.95	2.86	2.95	2.96
	Summer	2.96	2.86	2.96	2.97
	Winter 2017/2018	3.00	2.87	3.00	2.97
2018	Annual	3.14	2.99	3.14	3.12
	Summer	2.94	2.78	2.94	2.91
	Winter 2018/2019	3.31	3.21	3.31	3.33
2019	Annual	2.52	2.33	2.52	2.51
	Summer	2.43	2.16	2.43	2.39
	Winter 2019/2020	2.06	1.93	2.06	2.07
2020 YTD	Annual	1.78	1.68	1.78	1.80
	Summer	1.68	1.62	1.68	1.70
	Winter 2020/2021				

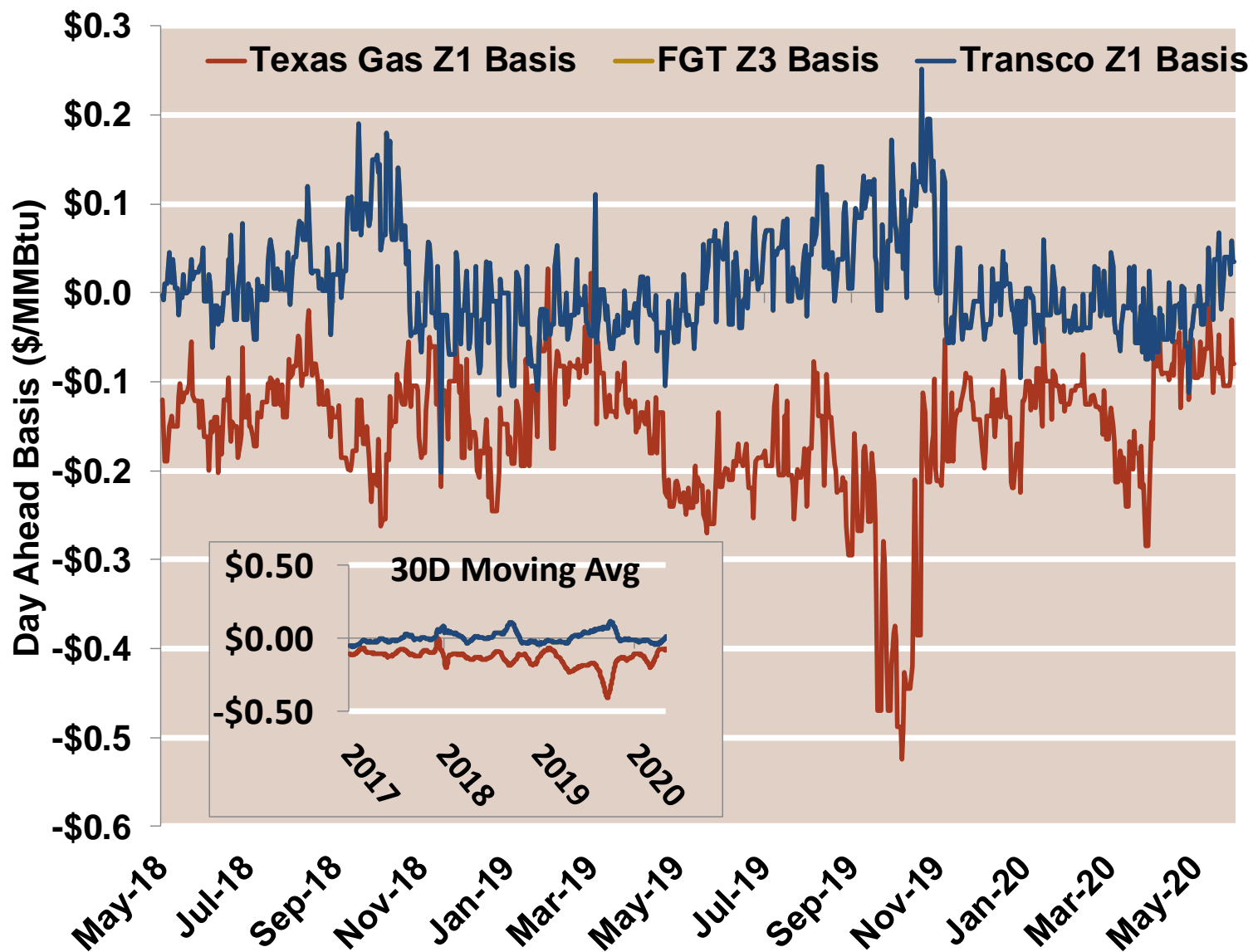
Southeast Day-Ahead Prices

Federal Energy Regulatory Commission Market Assessments



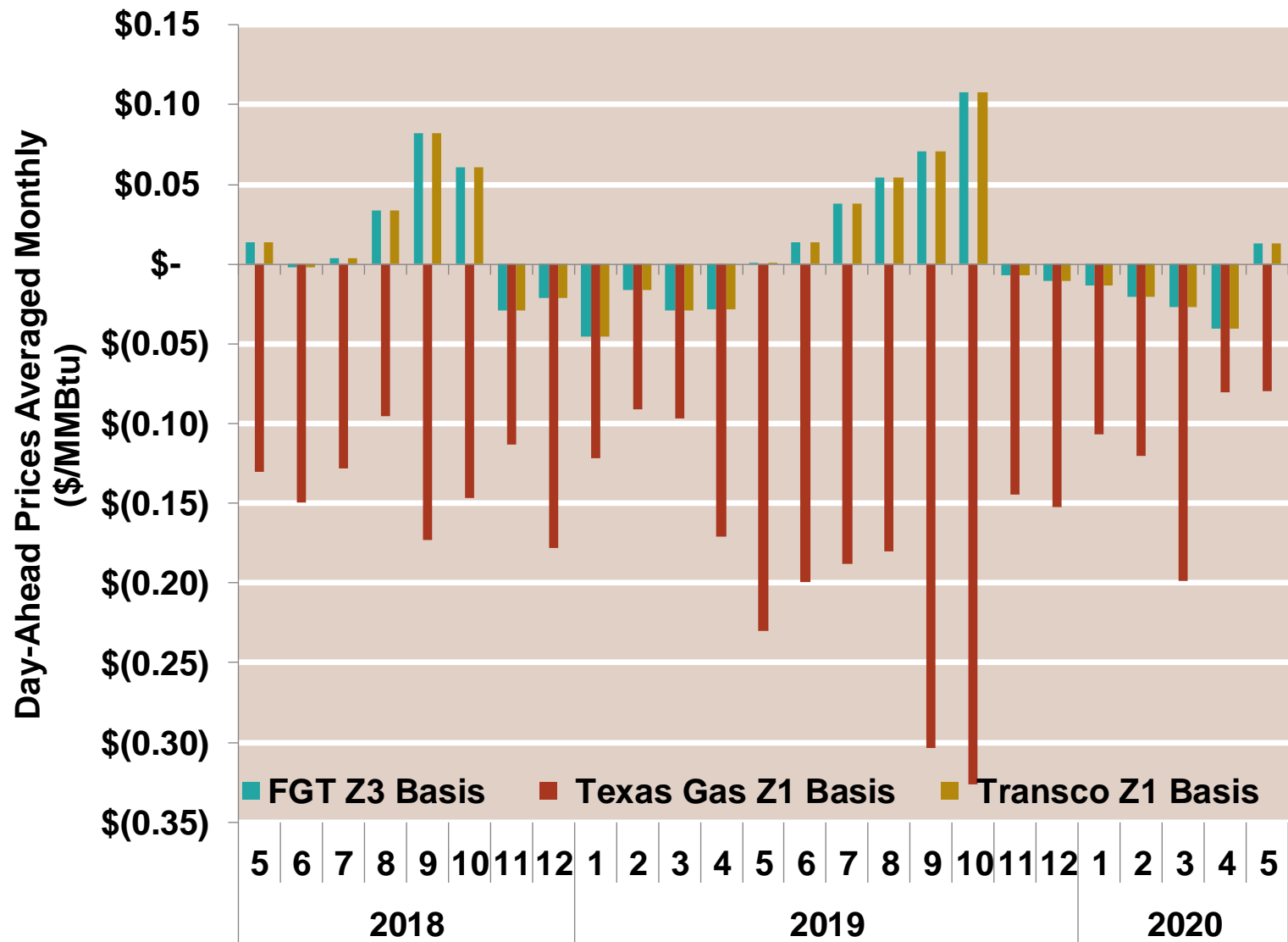
Southeast Day-Ahead Basis

Federal Energy Regulatory Commission Market Assessments



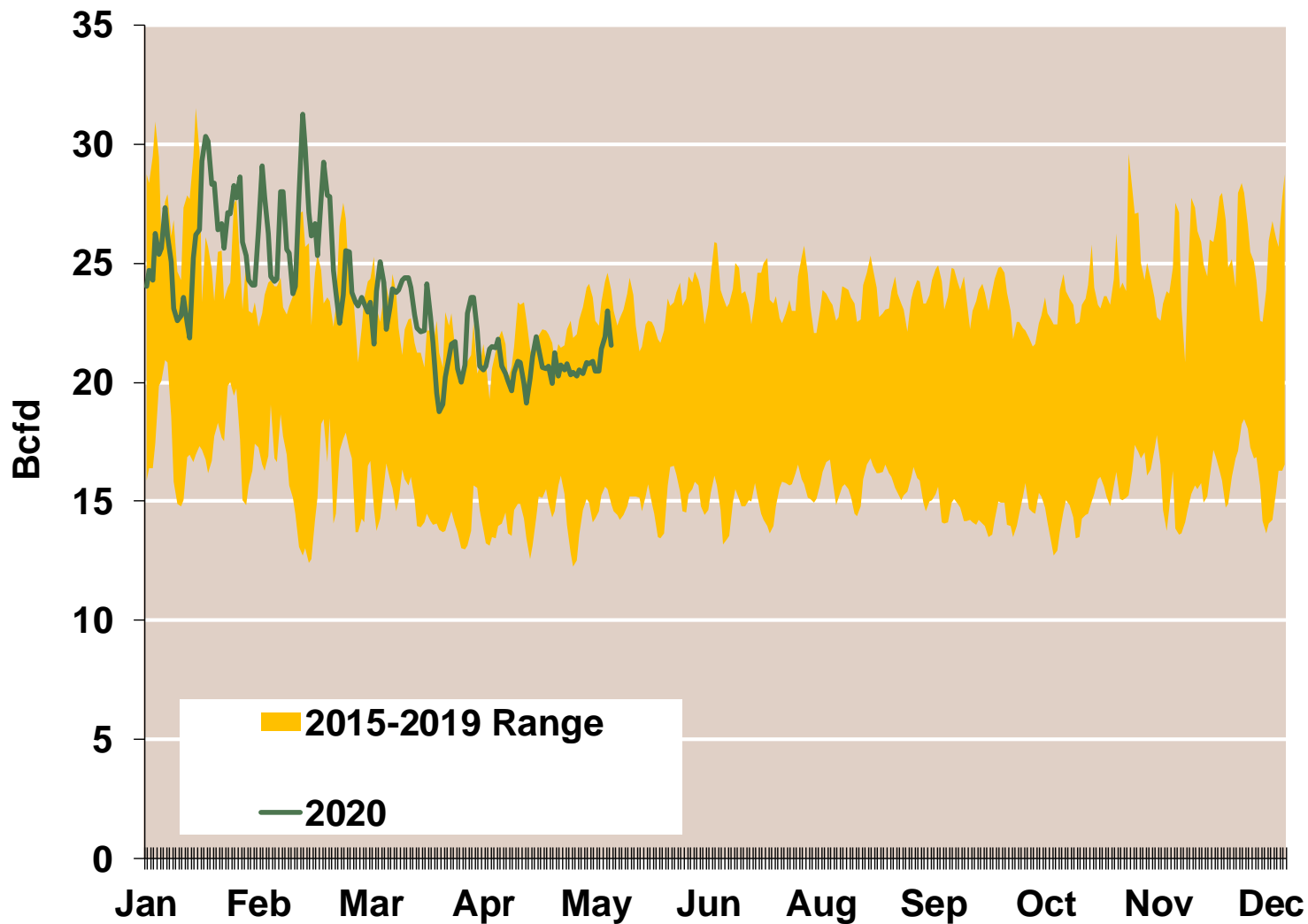
Southeast Basis to Henry Hub Averaged Monthly

Federal Energy Regulatory Commission Market Assessments



Daily Southeast Natural Gas Demand All Sectors

Federal Energy Regulatory Commission **Market Assessments**



Southeast Natural Gas Consumption for Power Generation

Federal Energy Regulatory Commission Market Assessments

