

Alien Invaders

Battling Invasive Species in Michigan and Beyond

© *Andy Morrison*



What is The Nature Conservancy?

- Our mission is “to **preserve** the plants, animals and natural communities that represent the **diversity** of life on Earth by protecting the **lands** and **waters** they need to **survive**.”
- Since 1951, we've been working with communities, businesses and people like you to protect more than **117 million acres** around the world.

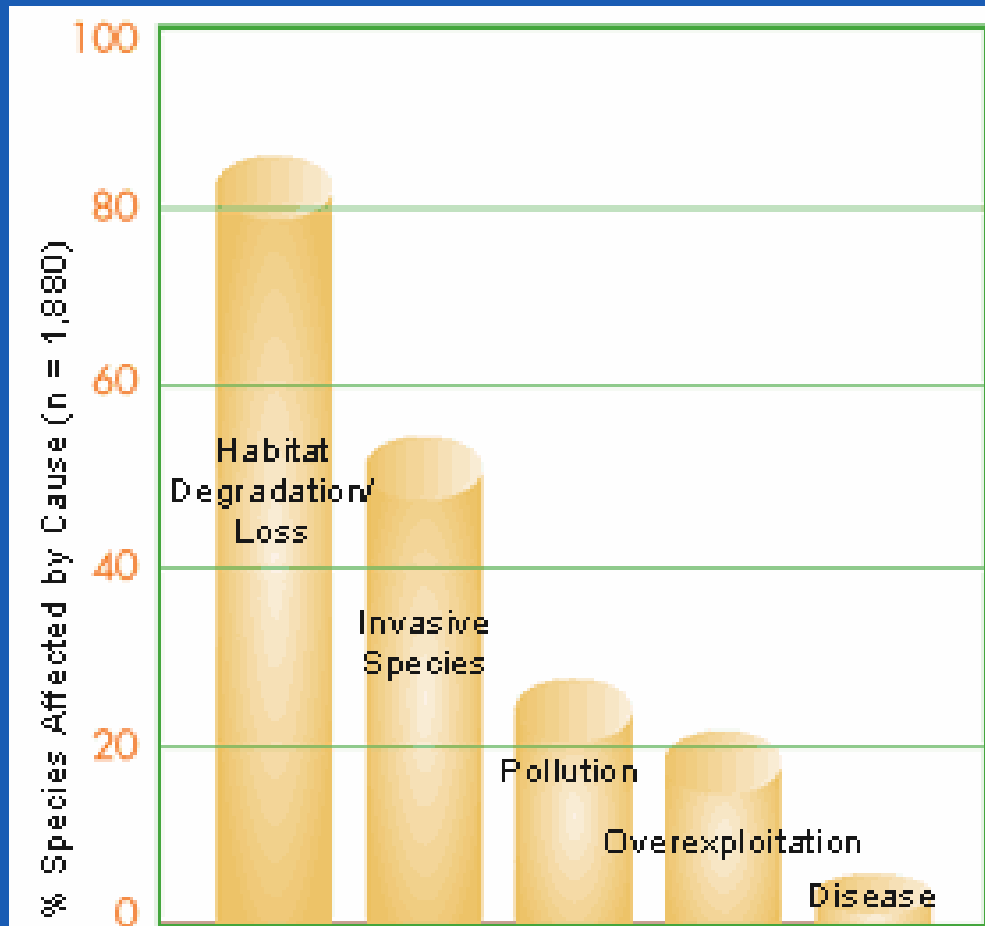


What are alien and invasive species?

- **Alien species** means, with respect to a particular ecosystem, **any species**—including its seeds, eggs, spores, or other biological material capable of propagating that species—**that is not native to that ecosystem.**
- **Invasive species** are **alien species** that **spread and cause, or are likely to cause, economic or environmental harm** or harm to human health. Some native species can also become problems when their natural "controls" are eliminated and they spread into areas where they aren't wanted.



Why should you care about invasives?



*Threats to
Biodiversity*

Source: *Precious Heritage: The Status of Biodiversity in the United States* © The Nature Conservancy and NatureServe



Categories of Invasive Species

- Plants
- Aquatic animals
- Pests and pathogens of plants
- Animals
- Diseases of animals

Plants: Kudzu



<http://spectrum.troyst.edu/~greipso/Pictures>



www.dybala.com/d/trace/dlogs/dl/d6



What are the **worst** threats in Michigan?

Garlic Mustard (*Alliaria petiolata*)



Garlic Mustard (Alliaria)



Glossy Buckthorn (*Rhamnus frangula*)





Spotted Knapweed (Centaurea maculosa)



Spotted Knapweed (Centaurea maculosa)



*Purple Loosestrife (*Lythrum salicaria*)*



Eurasian water-milfoil and Hydrilla



Photo Credit: USGS, Colette Jacono



Hydrilla infestation
Withlacoochee River, Florida
Photo by Brian Nelson
Copyright 1997 Southwest Florida Water Management District



Common Reed (*Phragmites australis*)

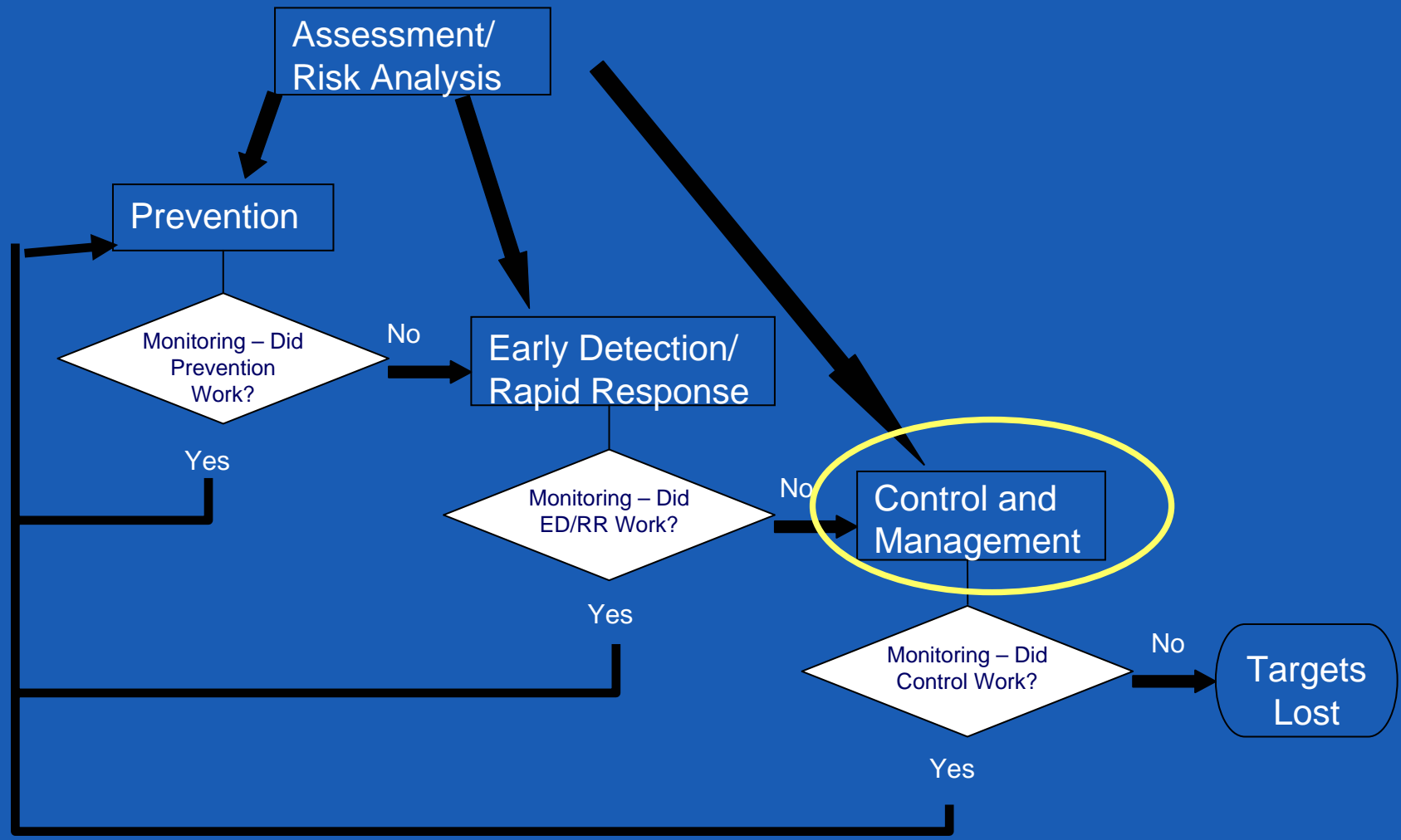




What are we doing about invasives?

- Assessment and Risk Analysis
- Prevention
- Early Detection and Rapid Response
- Control and





Control and Management: Glossy Buckthorn











Control and Management: Phragmites





- Helicopter spraying of glyphosate
- Flooding

Phragmites at Erie Marsh



Prescribed fire



More information

- nature.org/michigan
- *TNC Invasive Species Initiative*
tncweeds.ucdavis.edu
- dpearsall@tnc.org