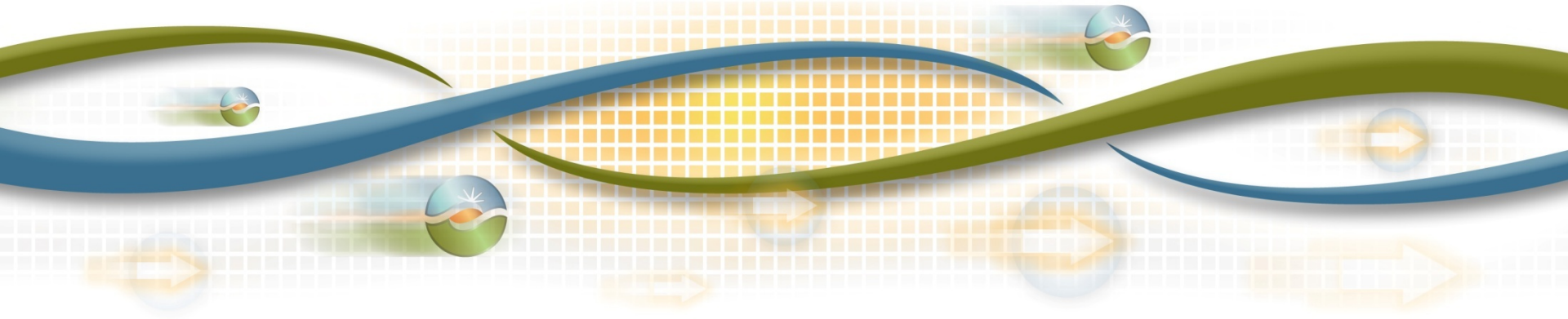




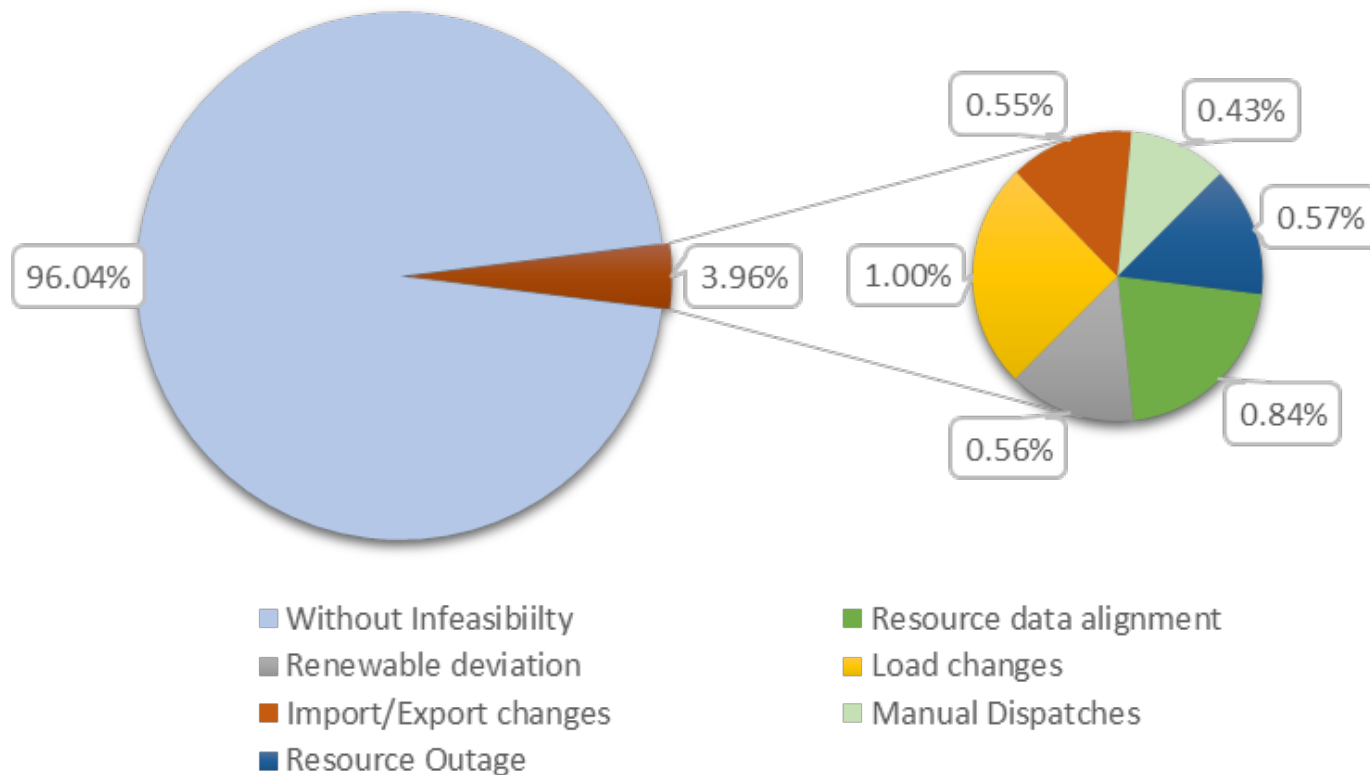
Federal Energy Regulatory Commission Technical Conference

California Independent System Operator Corporation
Docket Nos. ER15-861 and EL15-53

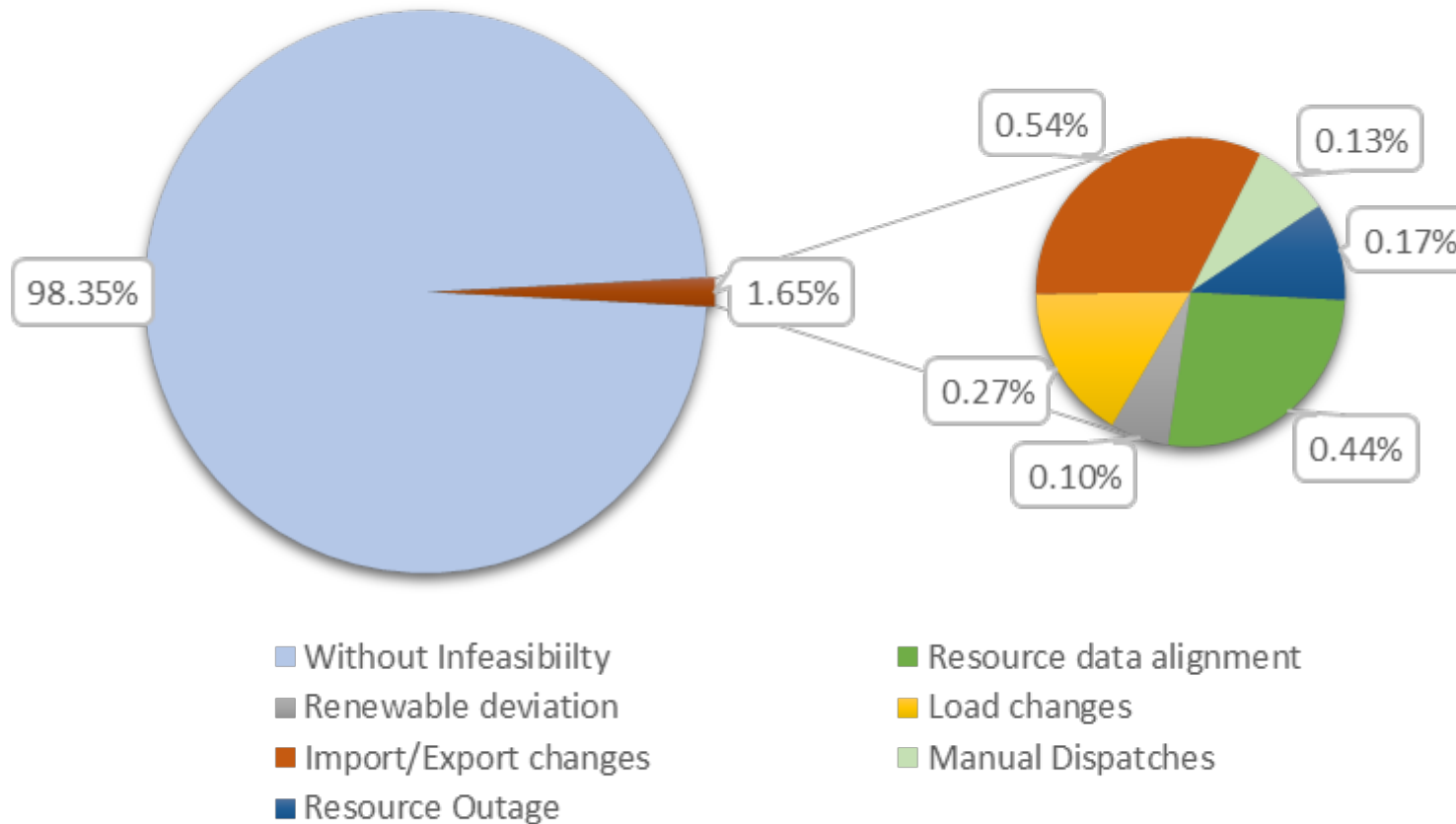
April 9, 2015



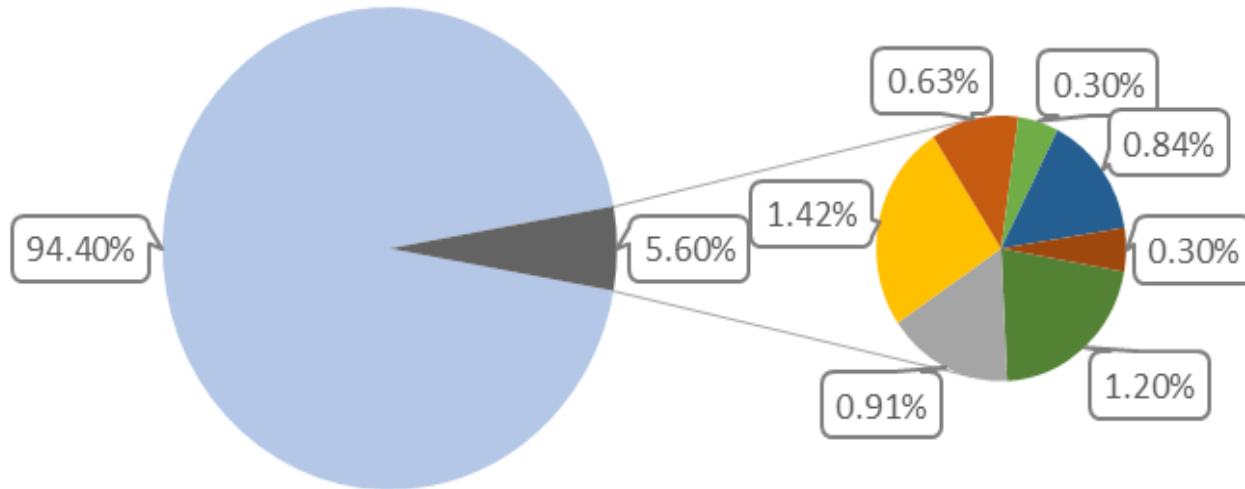
Frequency of under-gen infeasibility in fifteen minute market for November 2014- February 2015



Frequency of under-gen infeasibility in fifteen minute market for March 2015

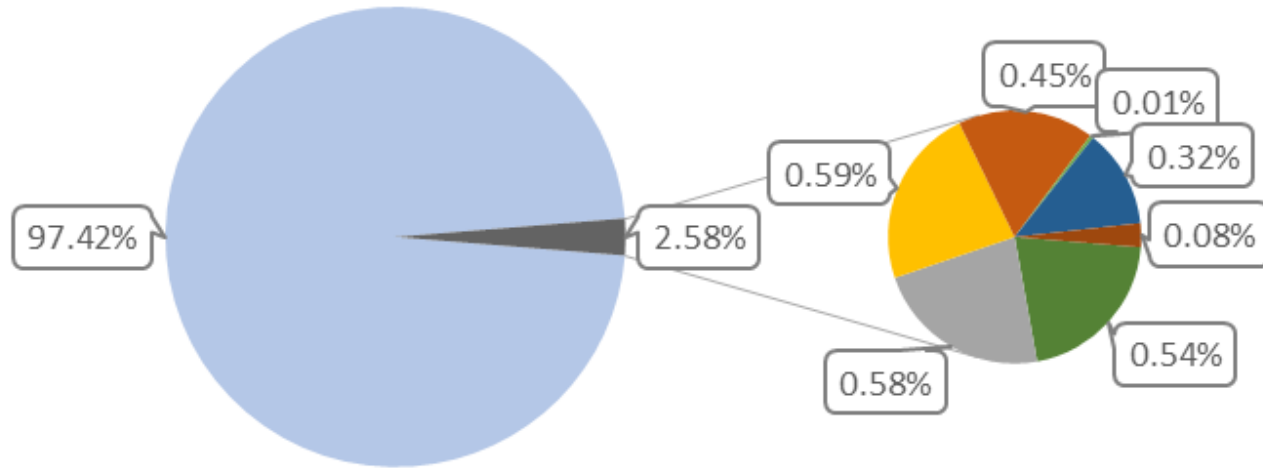


Frequency of under-gen infeasibility in five minute market for November 2014- February 2015



- Without Infeasibilities
- Resource data alignment
- Renewable deviation
- Load changes
- Import/Export changes
- Manual Dispatches
- Resource Outage
- Transfer/Congestion Constraint

Frequency of under-gen infeasibility in five minute market for March 2015



Without Infeasibilities

Load changes

Resource Outage

Resource data alignment

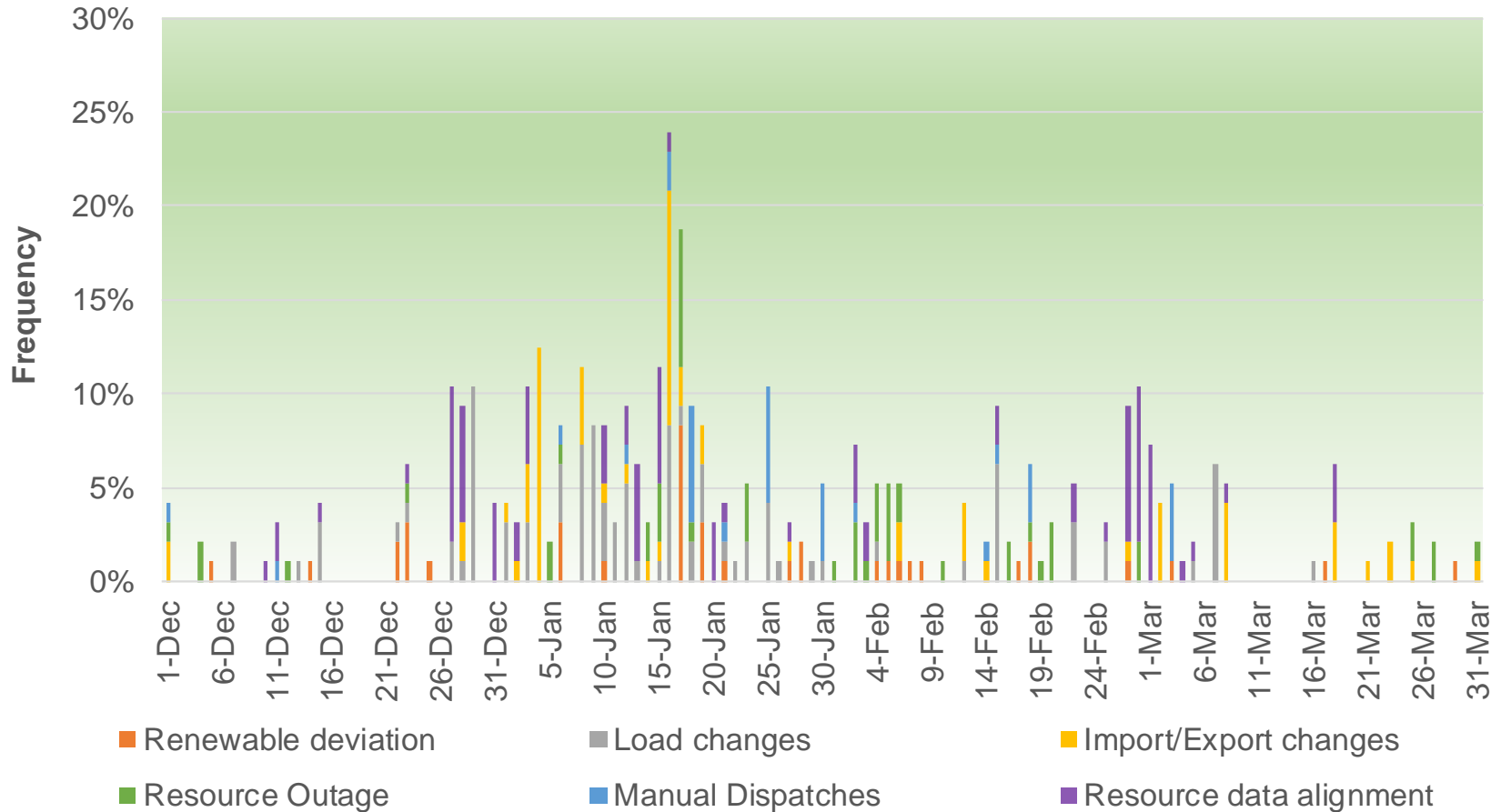
Import/Export changes

Transfer/Congestion Constraint

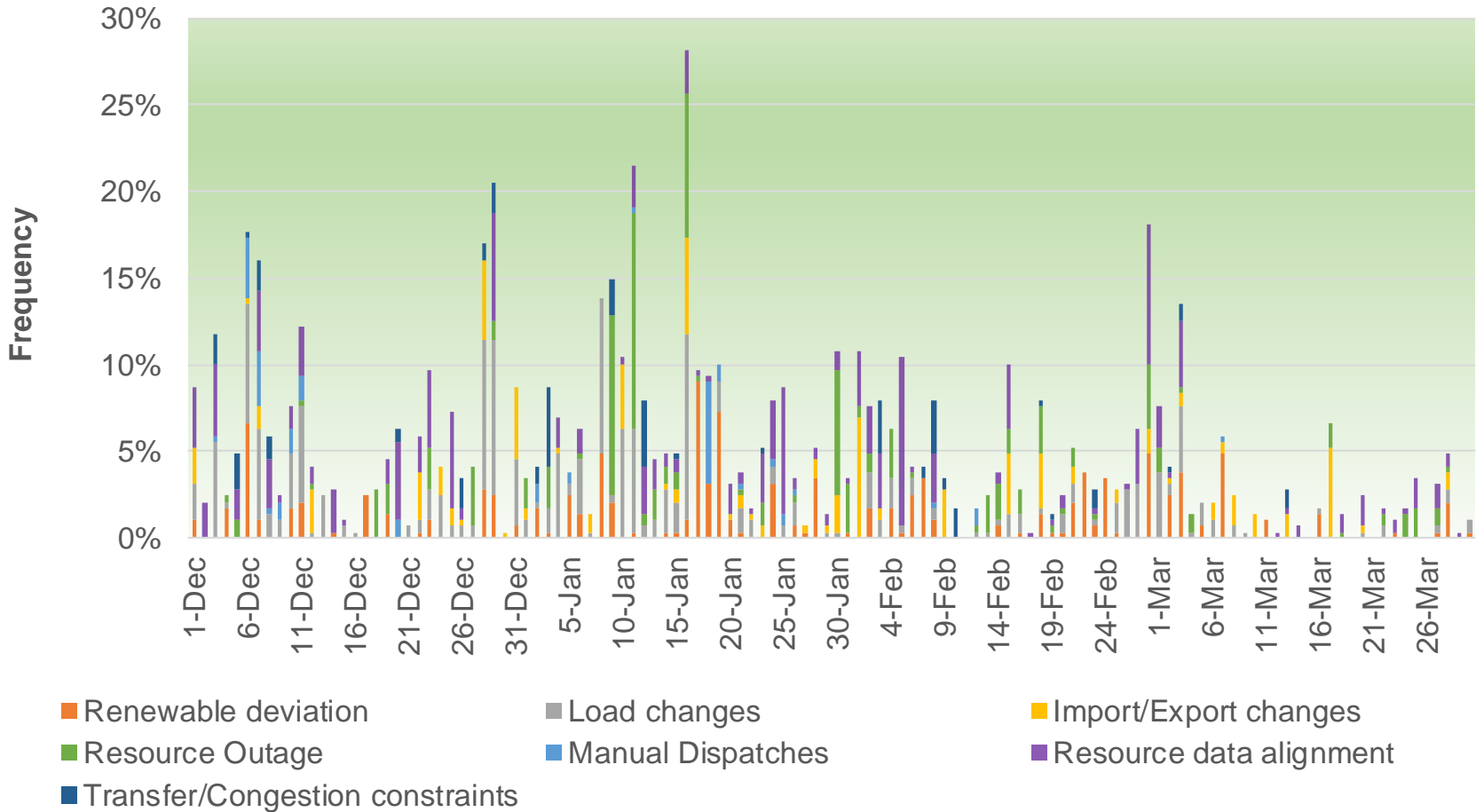
Renewable deviation

Manual Dispatches

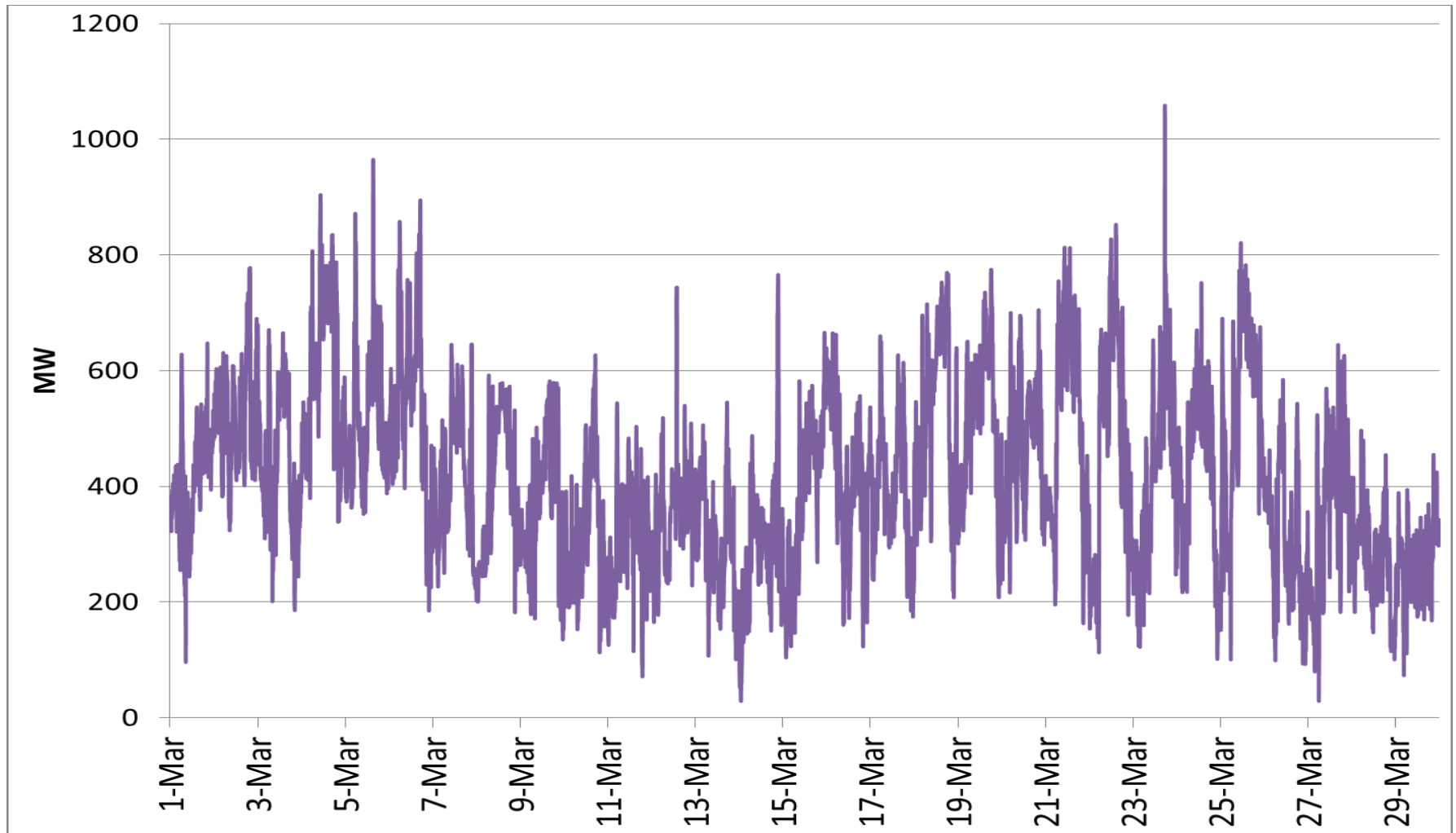
Frequency with which each category triggered parameter pricing in the fifteen minute market for December 1 through March 31 (PACE and PACW combined)



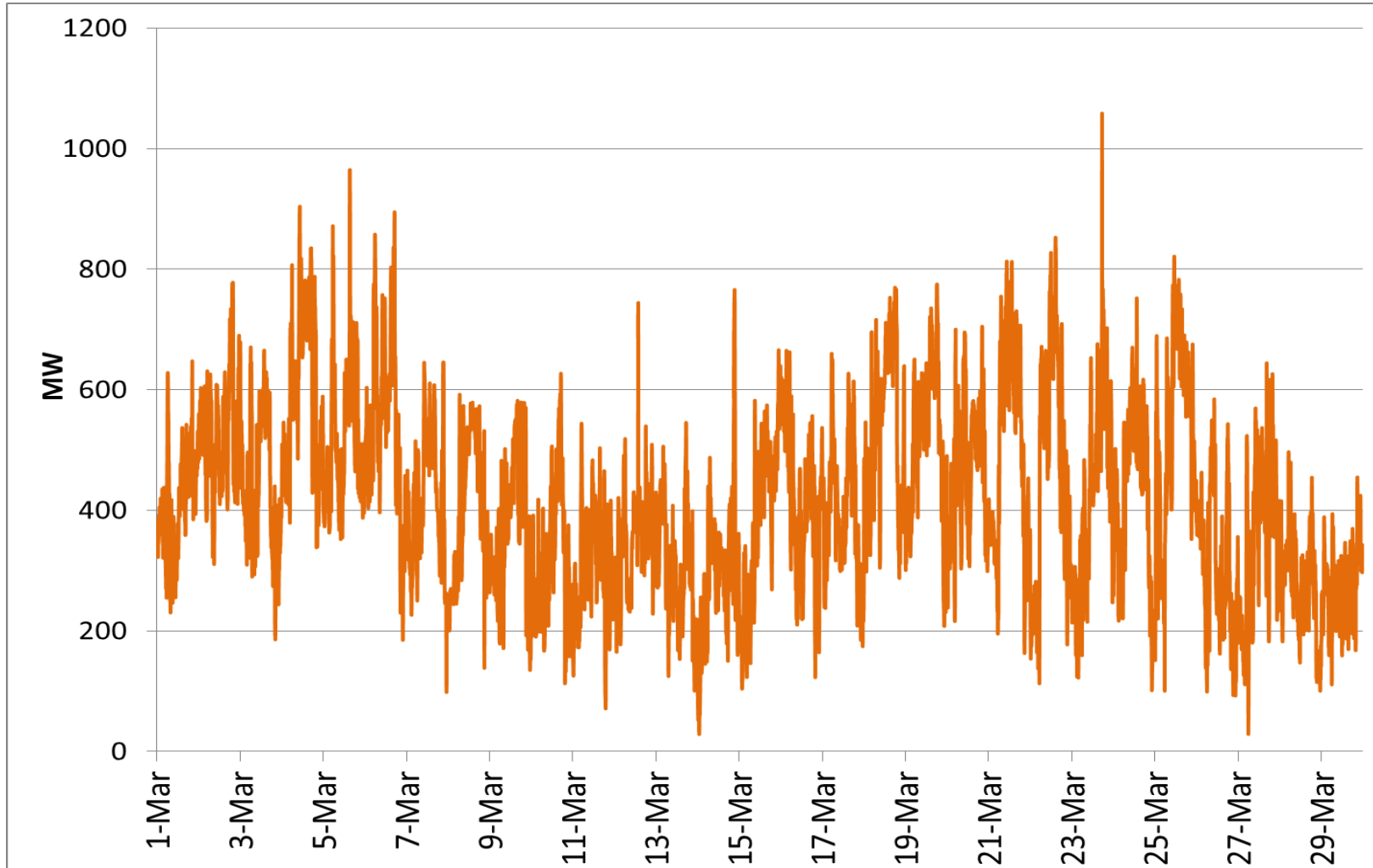
Undersupply infeasibility in five minute market for December 1 through March 31 (PACE and PACW combined)



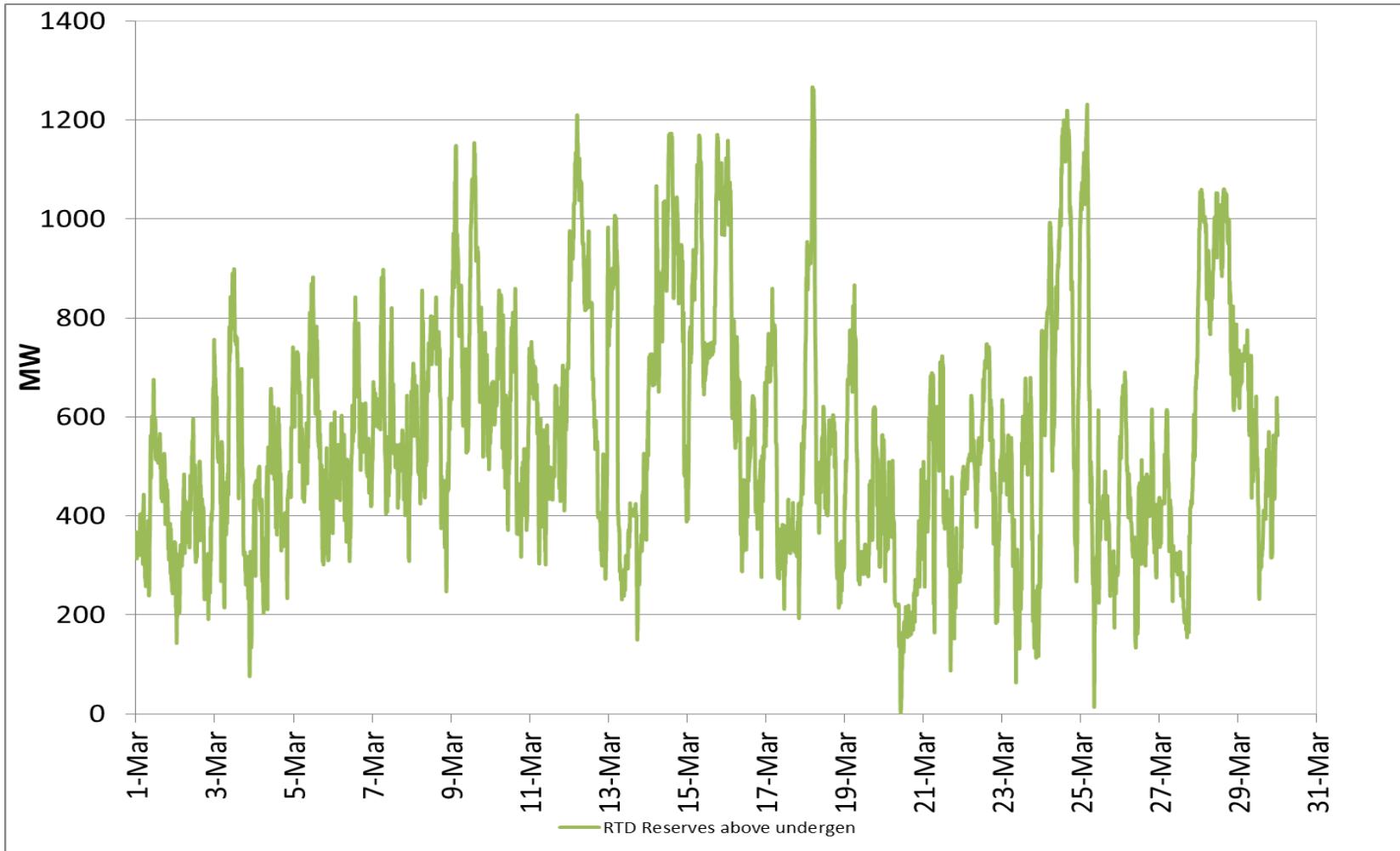
PACE available capability in excess of five minute under-gen infeasibility amount for March 2015



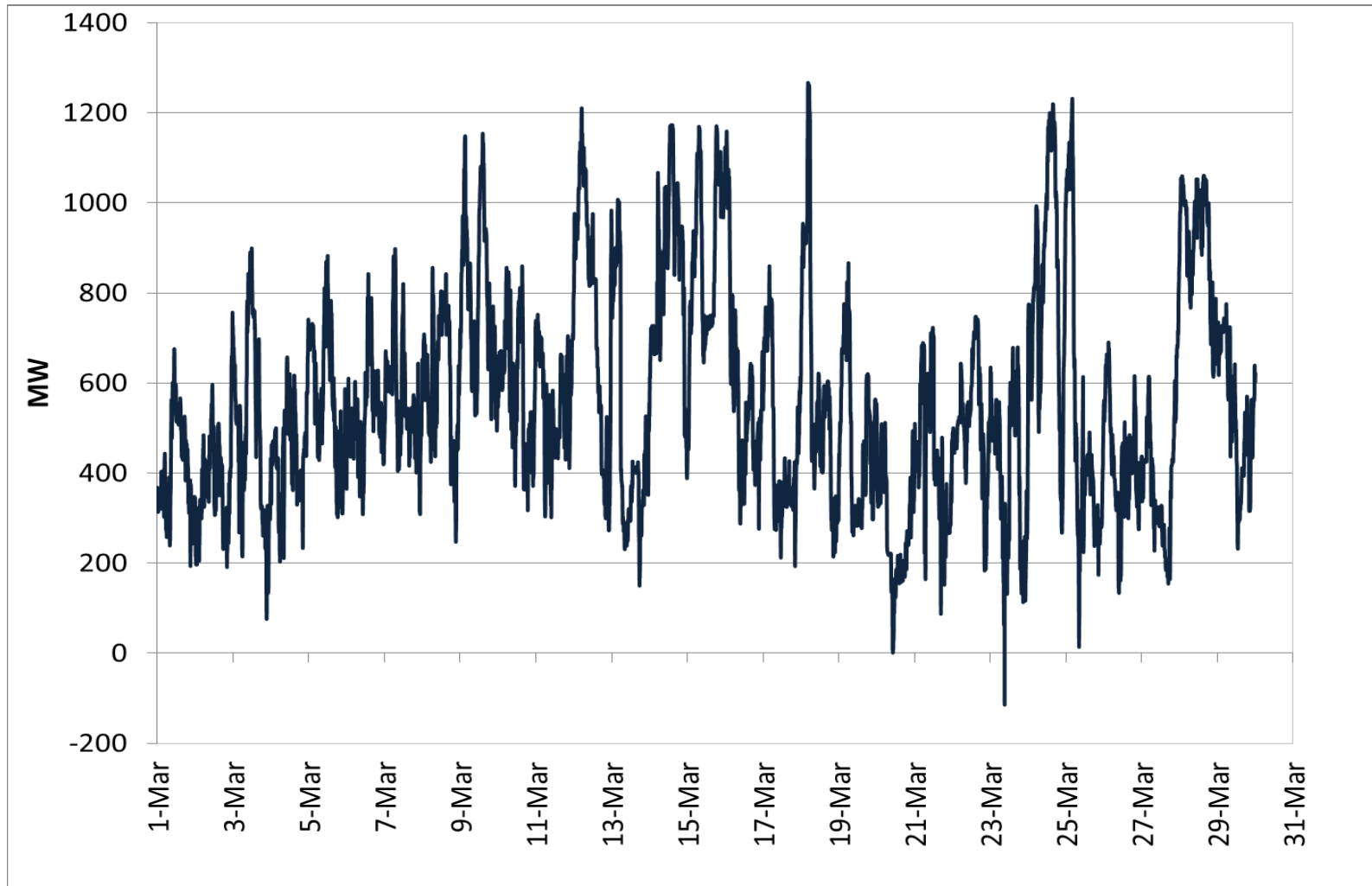
PACE available capacity in excess of fifteen minute under-gen infeasibility amount for March 2015



PACW available capacity in excess of five minute under-gen infeasibility amount for March 2015

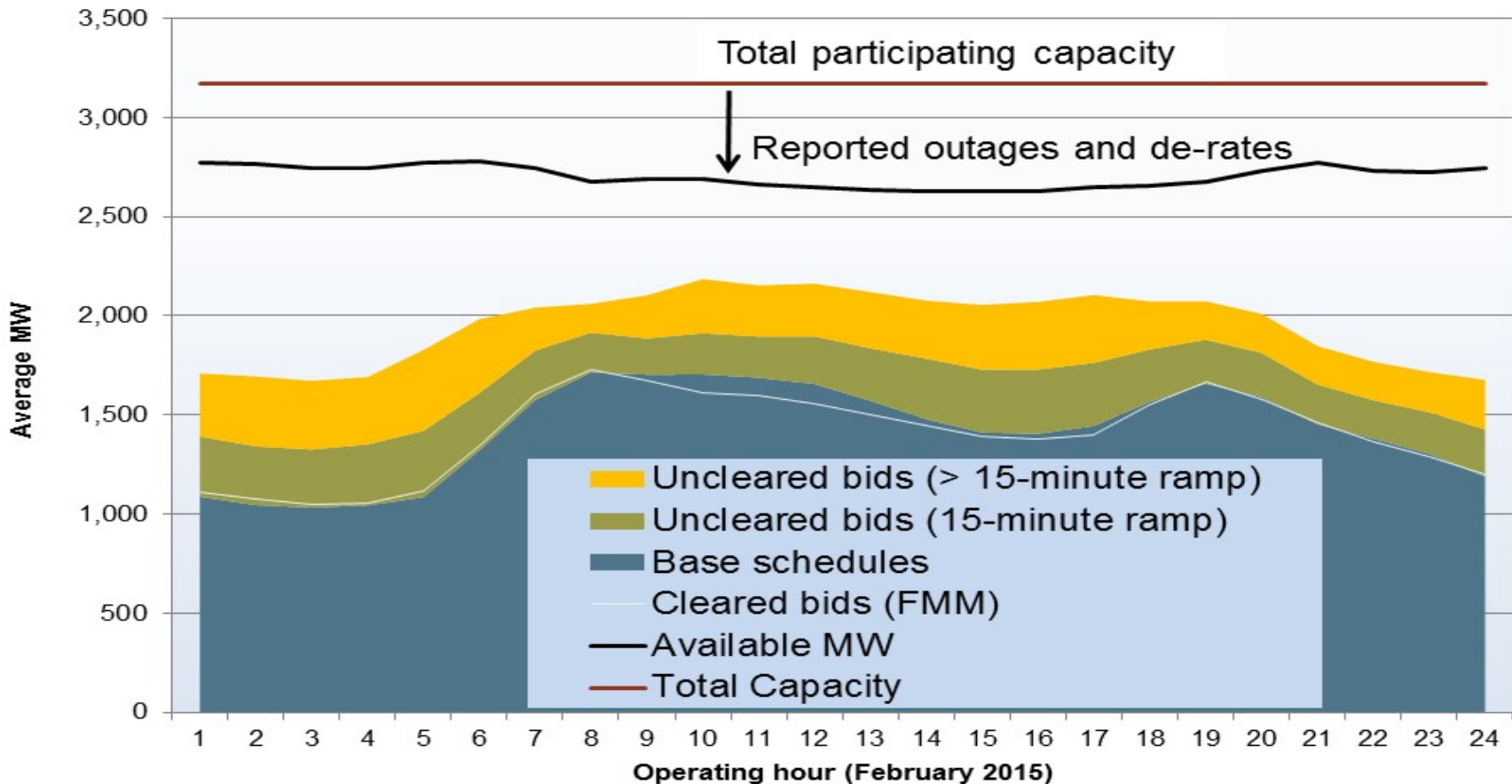


PACW available capacity in excess of fifteen minute under-gen infeasibility amount for March 2015



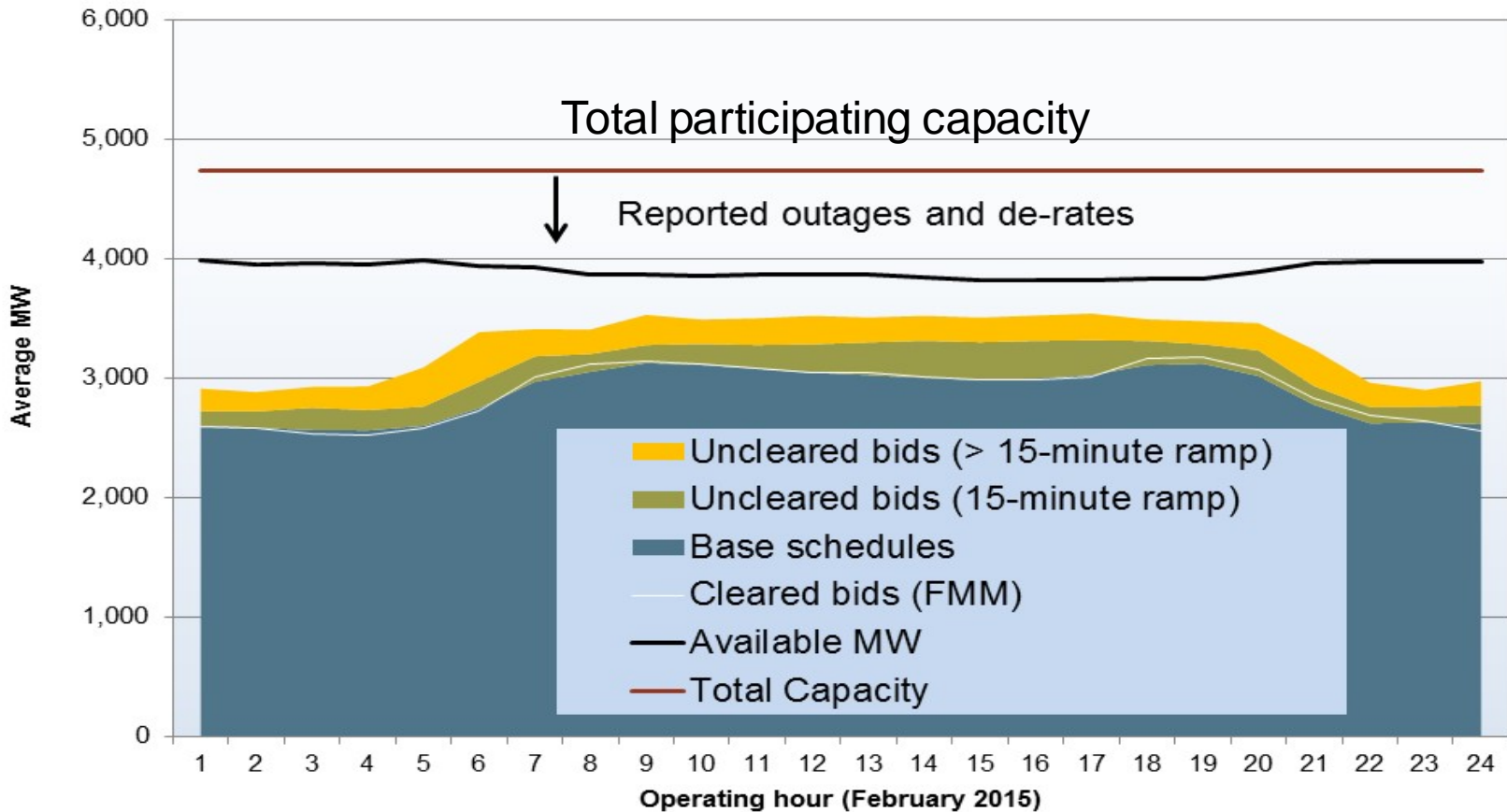
Undispatched bids averaging about 23 percent of total load on PacifiCorp West

PacifiCorp West – February 2015 (gas and coal only)

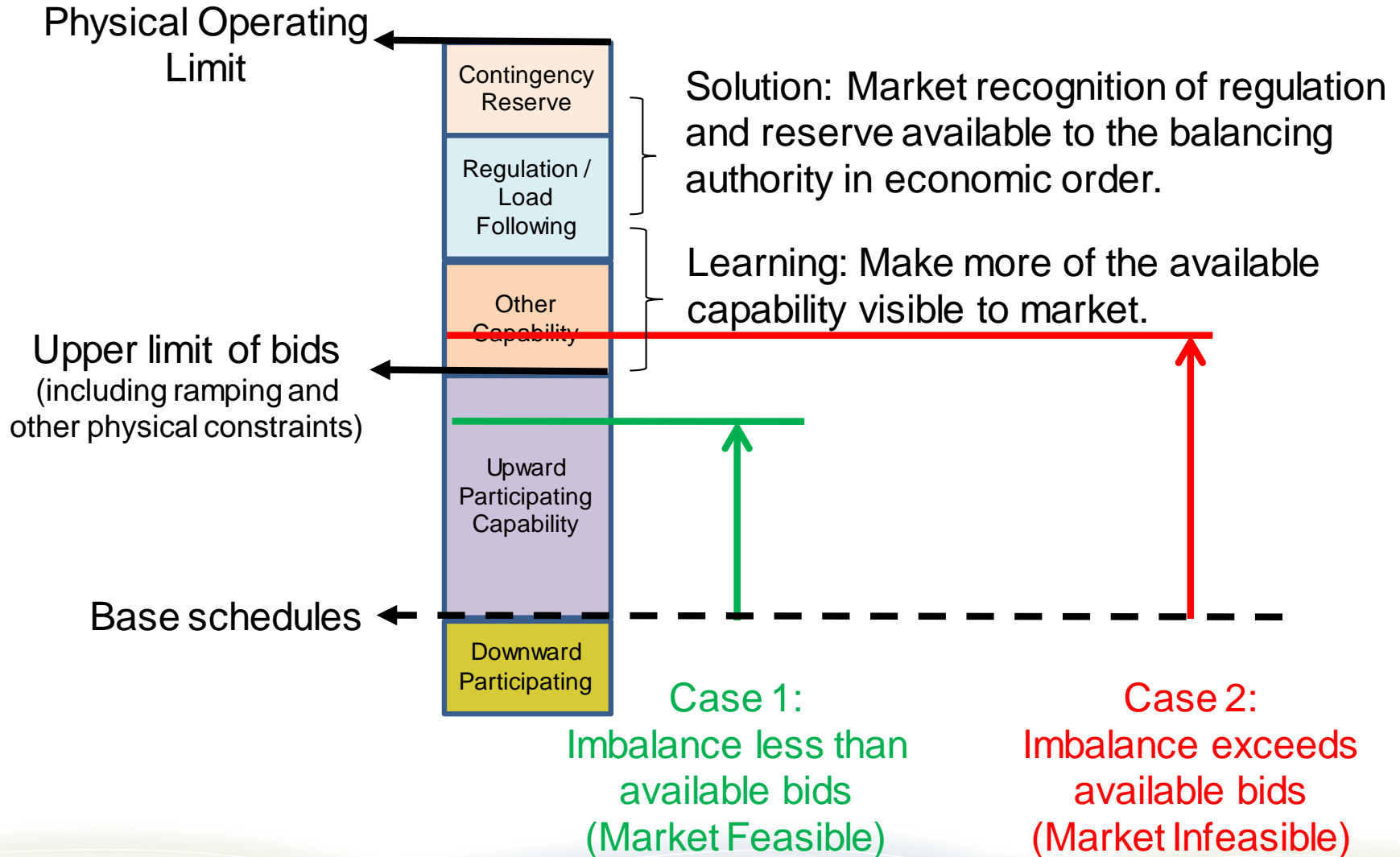


Undispatched bids averaging about 7.7 percent of total load in PacifiCorp East

PacifiCorp East – February 2015 (gas and coal only)



EIM solution and pricing should recognize all tools available to the balancing authority



Estimated* EIM Transfer Capability

