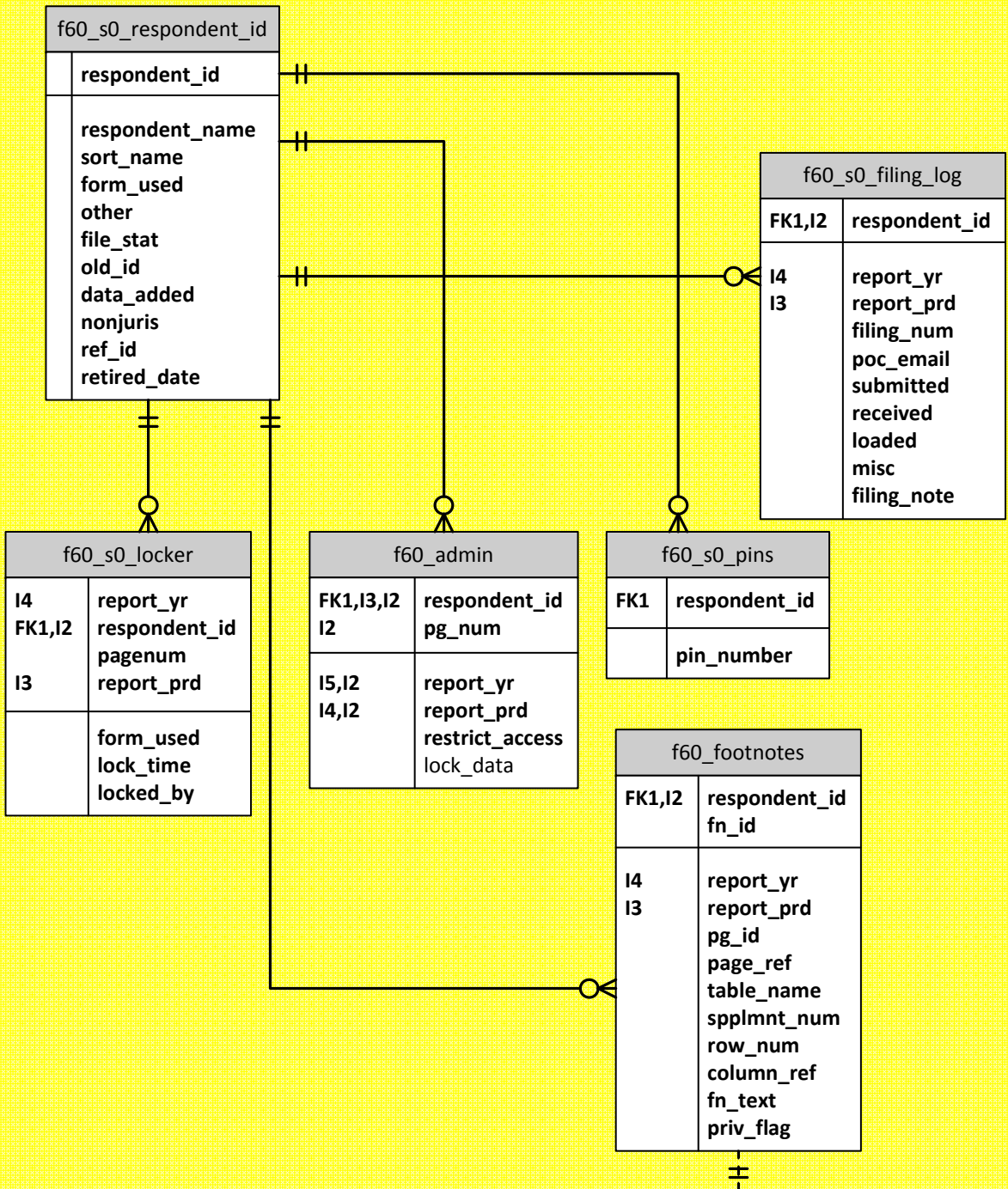


Lookups, Controls



Validations, Controls, Helpers

<b>f60_s0_calcs</b>	<b>f60_s0_catchall</b>	<b>f60_s0_checks</b>	<b>f60_s0_col_literals</b>
12 report_yr 13 table_name  cur_name calc_info calc_col col_4cond pre_calc post_calc form_used other	report_yr  gen_inst index pg_header pg_footer spec_pgs special_2a other keystr	14 report_yr 13 report_prd 12 check_id 12 other_id check_description equation1 equation2 variance_amt variance_pct error_check	12 table_name col_letter col_literal linelabel col_a col_b col_c col_e col_f col_g col_h col_i col_j col_k col_l col_m col_n col_o col_p col_q col_r col_s col_t col_u form_used other col_v col_w col_x col_y col_z
<b>f60_s0_comp_lookup</b>	<b>f60_s0_copy_forward</b>	<b>f60_s0_sched_info</b>	
lookuptype  comp_name availdate retiredate otherinfo	pg_num  12 report_yr 13 table_name sel_part where_part rep_part rep_4cond other	disp_ord  12 report_yr qtr_disp s_title spec_ref pg_range form2run table_list cur_list item_id pg_num prev_pg next_pg report_pgs inst_text info_ind allowsupp allowcopy allowins calc_flds other	
<b>f60_s0_state_abbrev</b>	<b>f60_s0_row_changes</b>	<b>f60_s0_row_literals</b>	
state_abbrev  state_full fips_code sort_seq	row_num  12 report_yr 13 table_name change other	row_num  12 report_yr 13 table_name row_lit more_text1 more_text2 more_text3 bold_font row_disp txt_align form_used	
<b>f60_s0_supp</b>			
13 report_yr 14 table_name 12 row_num  skipcell boldcell sumcell cellblack centercell form_used			

Data Details

<b>f60_001_ident_atsttn</b>	<b>f60_v_acct_rev_assoc</b>	<b>f60_xii_longterm_debt</b>	<b>f60_xvii_expns_dept_srv</b>	<b>f60_920_dept_salary</b>
12 respondent_id 15 report_yr 14 report_prd 16 spplmnt_num 13 row_num  name_of_respondent prev_name date_name_change date_of_inc date_of_org state_of_inc holding_company addr_prin_office poc_name poc_title poc_addr poc_email poc_phone poc_phone_ext submission_type report_date auth_person auth_title date_signed priv_flag name_of_respondent_f date_of_inc_f date_of_org_f state_of_inc_f holding_company_f addr_prin_office_f poc_name_f poc_title_f poc_addr_f poc_email_f poc_phone_f poc_phone_ext_f submission_type_f report_date_f auth_person_f auth_title_f date_signed_f	12 respondent_id 15 report_yr 14 report_prd 16 spplmnt_num 13 row_num  desc bal_beg_yr bal_end_yr bal_beg_yr_f bal_end_yr_f	12 respondent_id 15 report_yr 14 report_prd 16 spplmnt_num 13 row_num  desc obclass_obseries date_maturity int_rate amt_auth bal_beg_yr add_deduct bal_end_yr priv_flag desc_f obclass_obseries_f date_maturity_f int_rate_f amt_auth_f bal_beg_yr_f add_deduct_f bal_end_yr_f	12 respondent_id 15 report_yr 14 report_prd 16 spplmnt_num 13 row_num  desc_dept sal_wages off_sply_expns adm_expns_trans out_serv_emp prop_ins inj_damages emp_pen_ben reg_comm_expns gen_ad_expns misc_gen_expns rents depr_amort_expns tax_other_inc inc_taxes priv_dfrd_inc_tax priv_dfrd_tax_cr invest_tax_credit donations other_deduct int_long_term_debt int_debt_assoc_comp oth_int_expns overhead other_accts total_expns total_expns_f desc_dept_f sal_wages_f off_sply_expns_f adm_expns_trans_f out_serv_emp_f prop_ins_f inj_damages_f emp_pen_ben_f reg_comm_expns_f gen_ad_expns_f misc_gen_expns_f rents_f depr_amort_expns_f tax_other_inc_f inc_taxes_f priv_dfrd_inc_tax_f priv_dfrd_tax_cr_f invest_tax_credit_f donations_f other_deduct_f int_long_term_debt_f int_debt_assoc_comp_f oth_int_expns_f overhead_f other_accts_f total_expns_f	12 respondent_id 15 report_yr 14 report_prd 13 row_num  dept_name sal_billed_tot_amt sal_billed_parent_comp sal_billed_other_assoc sal_billed_nonassoc num_personnel priv_flag dept_name_f sal_billed_tot_amt_f sal_billed_parent_comp_f sal_billed_other_assoc_f sal_billed_nonassoc_f num_personnel_f
<b>f60_002_list_of_sched</b>	<b>f60_vii_undist_store_exp</b>	<b>f60_xiii_curr_acc_liab</b>	<b>f60_xiv_note_fin_stmnt</b>	<b>f60_930_2_misc_gen_expns</b>
12 respondent_id 15 report_yr 14 report_prd 16 spplmnt_num 13 row_num  remarks priv_flag remarks_f	12 respondent_id 15 report_yr 14 report_prd 16 spplmnt_num 13 row_num  desc labor expenses total priv_flag labor_f expenses_f total_f	12 respondent_id 15 report_prd 16 spplmnt_num 13 row_num  bal_beg_yr bal_end_yr bal_beg_yr_f bal_end_yr_f title_acct title_acct_f	12 respondent_id 15 report_prd 16 spplmnt_num 13 row_num  text_details priv_flag text_details_f	12 respondent_id 15 report_yr 14 report_prd 16 spplmnt_num 13 row_num  acct_title exps_amt priv_flag exps_amt_f
<b>f60_i_comp_bal</b>	<b>f60_viii_misc_assets</b>	<b>f60_xv_comp_inc_stmnt</b>	<b>f60_xviii_notes_stmnt_inc</b>	<b>f60_stmnt_comp_cap_billed</b>
12 respondent_id 15 report_yr 14 report_prd 16 spplmnt_num 13 row_num  curr_yr prev_yr priv_flag curr_yr_f prev_yr_f	12 respondent_id 15 report_yr 14 report_prd 16 spplmnt_num 13 row_num  desc bal_beg_yr bal_end_yr priv_flag desc_f bal_beg_yr_f bal_end_yr_f	12 respondent_id 15 report_yr 14 report_prd 16 spplmnt_num 13 row_num  curr_yr prev_yr priv_flag curr_yr_f prev_yr_f	12 respondent_id 15 report_yr 14 report_prd 16 spplmnt_num 13 row_num  text_details priv_flag text_details_f	12 respondent_id 15 report_yr 14 report_prd 16 spplmnt_num 13 row_num  text_details priv_flag text_details_f
<b>f60_ii_compprop</b>	<b>f60_ix_misc_dfrd_debit</b>	<b>f60_xvi_chrg_serv</b>	<b>f60_457_bill_assoc_comp</b>	<b>f60_458_bill_nonassoc</b>
12 respondent_id 15 report_yr 14 report_prd 16 spplmnt_num 13 row_num  acct_title bal_beg_yr additions retirements other_chgs bal_end_yr priv_flag spplmnt_num_f row_num_f acct_title_f additions_f retirements_f other_chgs_f bal_end_yr_f	12 respondent_id 15 report_yr 14 report_prd 16 spplmnt_num 13 row_num  desc bal_beg_yr bal_end_yr priv_flag desc_f bal_beg_yr_f bal_end_yr_f	12 respondent_id 15 report_yr 14 report_prd 16 spplmnt_num 13 row_num  assoc_direct_cost assoc_indirect_cost assoc_tot_cost non_direct_cost non_indirect_cost non_tot_cost tot_direct_cost tot_indirect_cost tot_tot_cost priv_flag assoc_direct_cost_f assoc_indirect_cost_f assoc_tot_cost_f non_direct_cost_f non_indirect_cost_f non_tot_cost_f tot_direct_cost_f tot_indirect_cost_f tot_tot_cost_f	12 respondent_id 15 report_yr 14 report_prd 16 spplmnt_num 13 row_num  assoc_comp direct_costs indirect_costs comp_cap_use tot_billed priv_flag assoc_comp_f direct_costs_f indirect_costs_f comp_cap_use_f tot_billed_f	12 respondent_id 15 report_yr 14 report_prd 16 spplmnt_num 13 row_num  assoc_comp direct_costs indirect_costs comp_cap_use tot_billed priv_flag assoc_comp_f direct_costs_f indirect_costs_f comp_cap_use_f tot_billed_f excess_or_defic excess_or_defic_f
<b>f60_iii_accum_priv_prop</b>	<b>f60_x_dev_demo_exp</b>	<b>f60_xi_prop_cap</b>		
12 respondent_id 15 report_yr 14 report_prd 16 spplmnt_num 13 row_num  bal_beg_yr additions retirements other_chgs bal_end_yr priv_flag bal_beg_yr_f additions_f retirements_f other_chgs_f bal_end_yr_f	12 respondent_id 15 report_yr 14 report_prd 16 spplmnt_num 13 row_num  desc amount priv_flag desc_f amount_f	12 respondent_id 15 report_yr 14 report_prd 16 spplmnt_num 13 row_num  amount priv_flag amount_f		
<b>f60_iv_investments</b>				
12 respondent_id 15 report_yr 14 report_prd 16 spplmnt_num 13 row_num  desc bal_beg_yr bal_end_yr priv_flag desc_f bal_beg_yr_f bal_end_yr_f				