

An Overview of the Eastern Interconnection States Planning Council





EISPC

EASTERN INTERCONNECTION STATES' PLANNING COUNCIL

Acknowledgement and Disclaimer

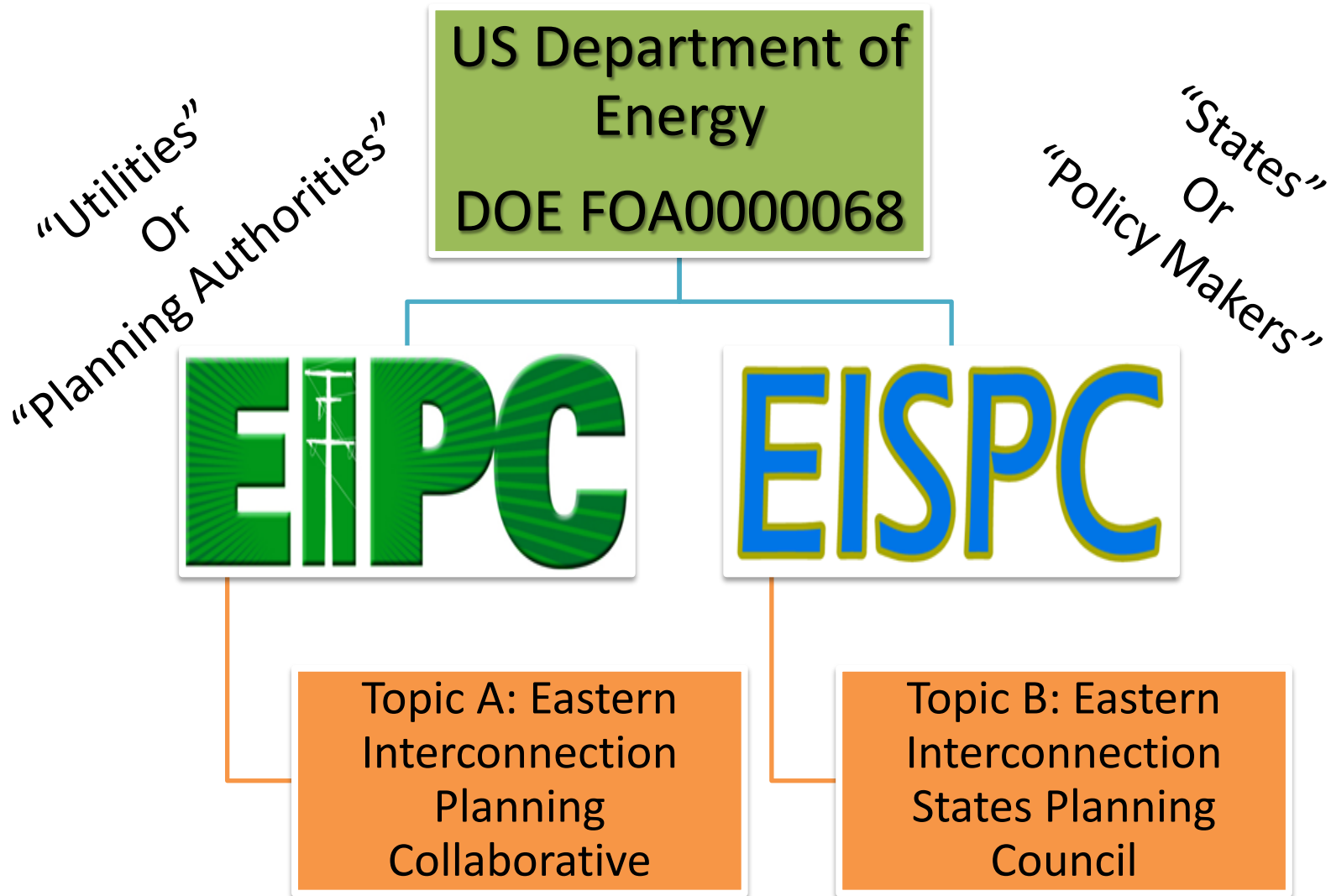
Acknowledgement:

This material is based upon work supported by the Department of Energy, National Energy Technology Laboratory under Award Number DE-OE0000316.

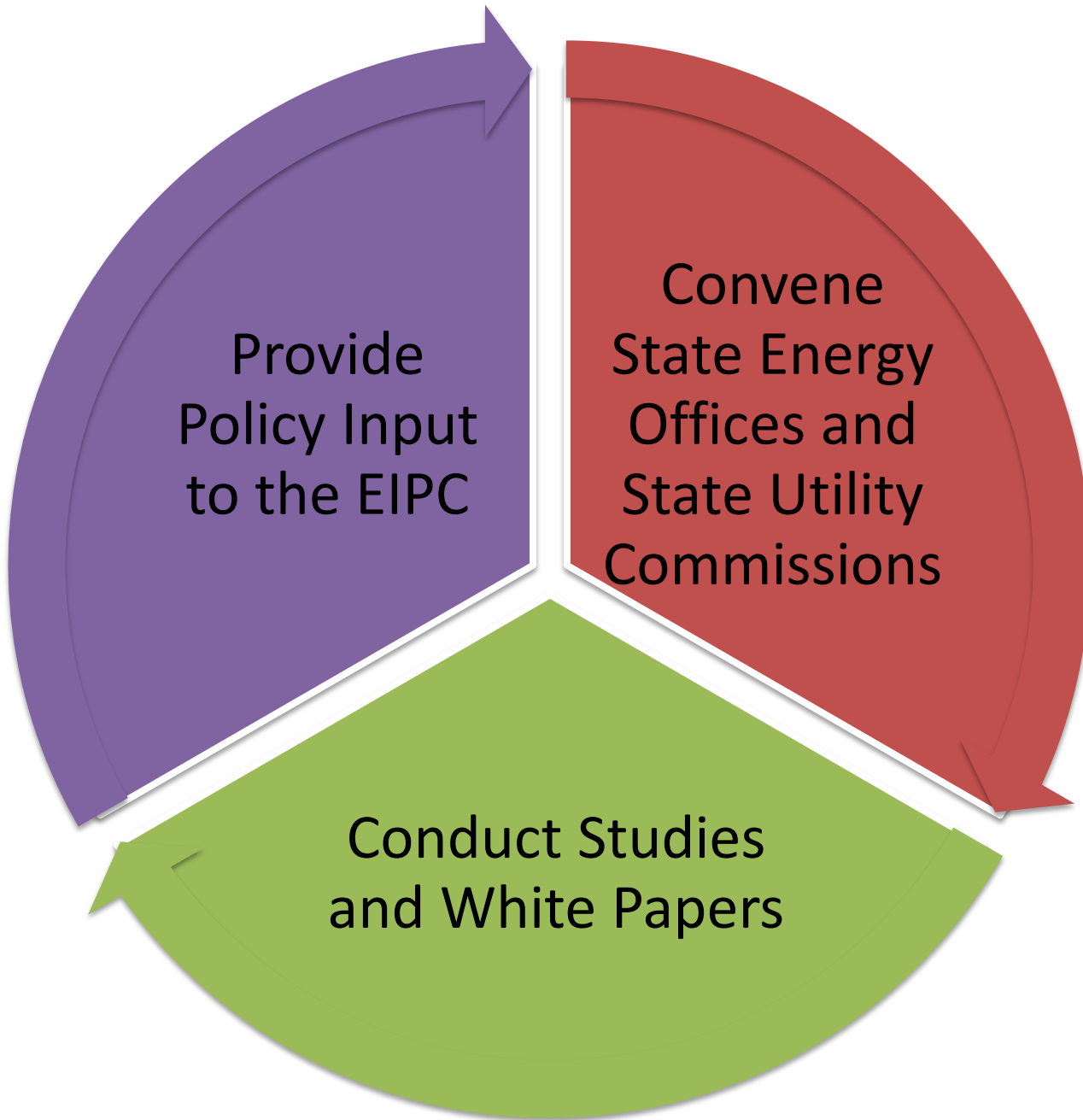
Disclaimers:

This report was prepared as an account of work sponsored by an agency of the United States Government. Neither the United States Government nor any agency thereof, nor any of their employees, makes any warranty, expressed or implied, or assumes any legal liability or responsibility for the accuracy, completeness, or usefulness of any information, apparatus, product or process disclosed or represents that its use would not infringe upon privately owned rights. Reference herein to any specific commercial product, process or service by trade name, trademark, manufacturer, or otherwise does not necessarily constitute or imply its endorsement, recommendation, or favoring by the United States Government or any agency thereof. The views and opinions of authors expressed herein do not necessarily state or reflect those of the United States Government or any agency thereof.

Eastern Interconnection Planning

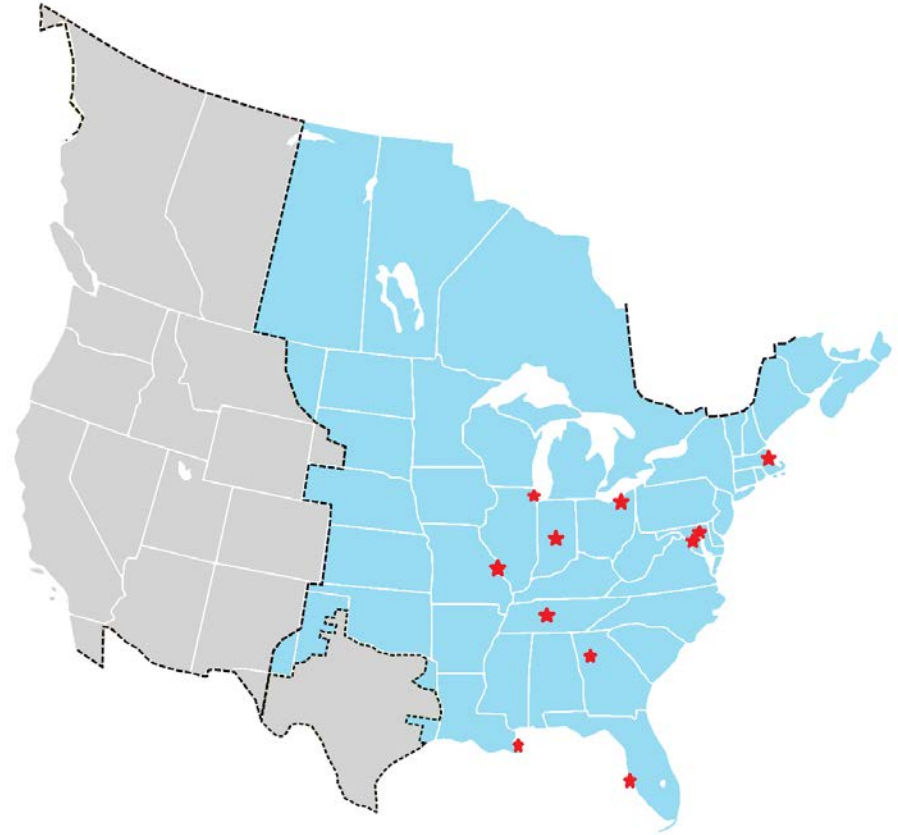


What Does EISPC Do?



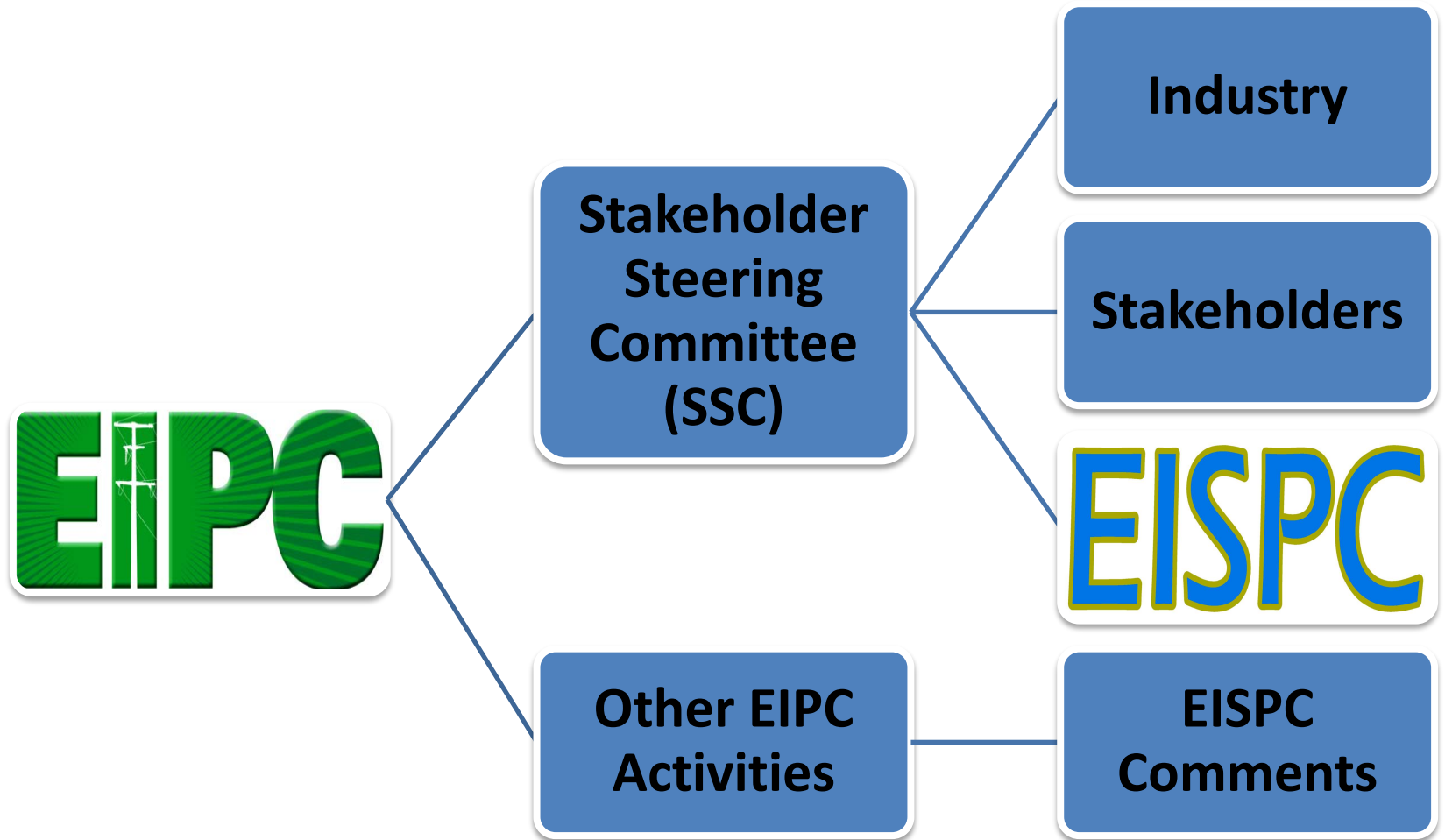
Convening Role for State Energy Offices and Utility Commissions

EISPC provides a forum for the 39 states, the District of Columbia, the City of New Orleans, and 6 Canadian provinces that compose the Eastern Interconnection to discuss and analyze immediate and long-term issues of mutual concern. The EISPC forum, because it requires consensus, serves as an “honest broker” for objective public policy analysis with an emphasis on collaboration and advancing the analytical tools available to states. There are two representatives per state including one commissioner and a designee of the Governor.



Stars on the map represent past locations of EISPC Council Meetings

Participation in Topic A (EIPC) Activities



1/3 of the SCC membership are EISPC representatives

Studies and White Papers

The purpose of the studies and white papers are to inform states and stakeholders on the inputs of transmission planning to ensure productive policy within the states and provide a level of regulatory certainty to the EIPC.

Relevant Studies and White Papers

Changing Resource Mix

- State by State Demand Side Resources
- Current and Future Direction of the Coal Industry
- Current and Future Direction of the Nuclear Industry
- Electric and Natural Gas Interdependencies

Energy Zones

- Transmission Planning
- Energy Zones Mapping Tool
- State by State Public Policy Inventory

Load Growth Patterns / Existing Transmission

- Co-Optimization
- Load Forecasting Case Studies

Energy Zones Mapping Tool

Web-Based GIS Tool

Includes nine (9) clean energy resource categories

Used to locate areas with high suitability for clean power generation in the EI

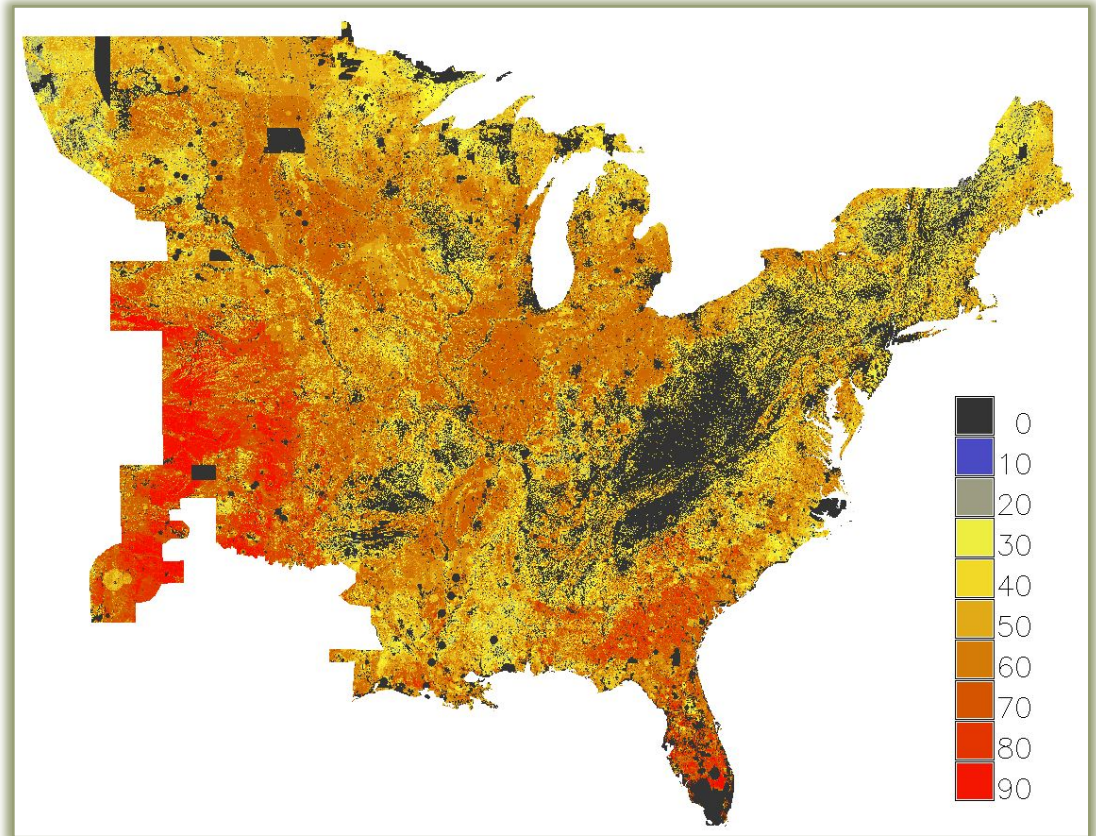
Searchable Energy Policy and Regulations Database

Available at
<http://eispctools.anl.gov>

Model for Utility-scale Solar Photovoltaic

Input Modeling Layers:

- Energy Potential: Solar PV
- Slope
- Land Cover Area
- Population Density
- Distance to Transmission
- Protected Lands
- Habitat





EISPC

EASTERN INTERCONNECTION STATES' PLANNING COUNCIL

RESOURCE LINKS

EISPC - www.eispc.org

NARUC's EISPC Page - www.naruc.org/eispc

EIPC - www.eipconline.org

Mapping Tool - <http://eispctools.anl.gov>

Appendix Slides

Lists All Studies and White Papers

Overview of Completed Reports

Market Structures and Transmission Planning Processes in the Eastern Interconnection

- Christensen Associates
- June 2012, <http://bit.ly/EISPCmkt>

Economics of Resource Adequacy

- Astrape Consulting,
- January 2013, <http://bit.ly/EISPCra>

Assessment of Demand-Side Resources within the Eastern Interconnection

- Navigant Consulting
- March 2013, <http://bit.ly/EISPCdsr>

Assessment of the Nuclear Power Industry

- Navigant
- June 2013, <http://bit.ly/EISPCnclr>

Overview of Completed Reports (continued)

Current State and Future Direction of Coal-fired Power in the Eastern Interconnection

- ICF International
- June 2013 <http://bit.ly/EISPCcoalS>
- <http://bit.ly/EISPCcoalWP>

Co-Optimization of Transmission and Other Supply Resources

- 5 Universities and NREL
- September 2013, <http://bit.ly/EISPCco>

Clean Energy Zones Study

- Clean Energy States Alliance, ANL, ORNL, and NREL
- October 2013, <http://bit.ly/EISPCez>

Transmission Planning Whitepaper

- Navigant
- January 2014, <http://bit.ly/EISPCtp>

Reports Underway

Electric and Natural Gas Infrastructure Requirements

- Study: ICF International; Whitepaper: Illinois Institute of Technology, September 2014

Electric and Natural Gas Infrastructure Requirements

- White Paper: Illinois Institute of Technology, October 2014

Probabilistic Risk Assessment for Transmission and other Resource Planning Study

- Electric Power Research Institute, November 2014

Incorporation of Risk Analysis into Planning Processes

- Electric Power Research Institute, November 2014

Reports Underway (Continued)

Application of the Energy Zones Mapping Tool

- Illinois Institute of Technology
- October 2014

Clean Energy Zones Public Policy inventory and Database

- Clean Energy States Alliance, January 2015

Data Mining of the EIPC Phase I and II Build Out Scenarios

- Navigant Consulting
- December 2014

Co-Optimization Demonstration

- Energy Exemplar
- January 2015

Load Forecasting Study

- University of North Carolina at Charlotte
- January 2015